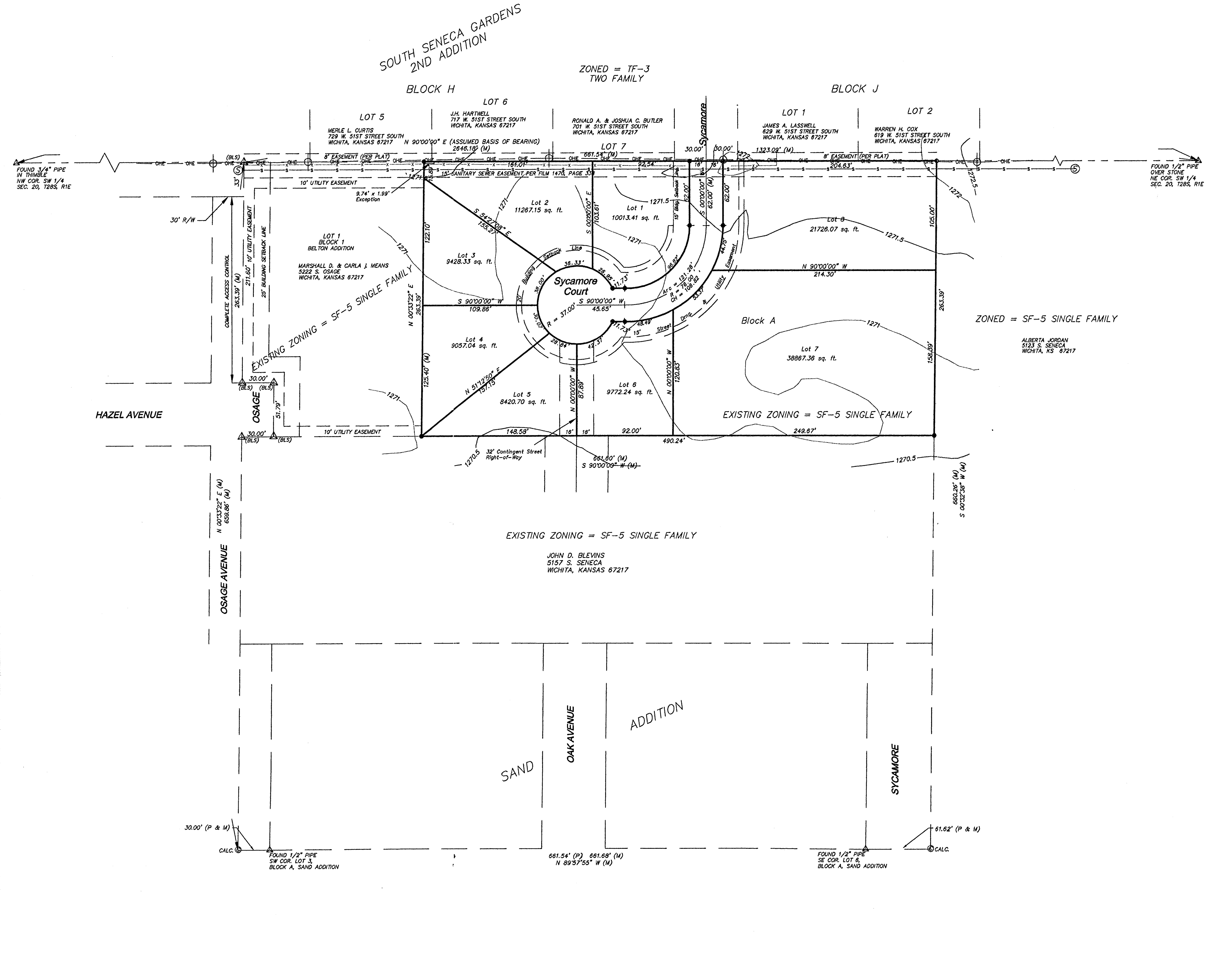


**Cornfield Addition, Wichita,
Sedgwick County, Kansas**
One-Step Preliminary & Final Plat



LAND SURVEYOR'S CERTIFICATE AND DESCRIPTION

State of Kansas)
County of Sedgwick) SS

We, Benchmark Land Survey, P.A., Land Surveyors in aforesaid county and state, do hereby certify that, under the supervision of the undersigned, we have surveyed and platted "Cornfield Addition", Wichita, Sedgwick County, Kansas and that the accompanying plat is a true and correct exhibit of the property surveyed, described as follows:

The East 3 Acres of the North 4 Acres of the West Half of the North Half of the Northeast Quarter of the Southwest Quarter of Section 20, Township 28 South, Range 1 East of the 6th Principal Meridian, Sedgwick County, Kansas.

Existing public easements and dedications being vacated by virtue of K.S.A. 12-512(b).

State of Kansas)
City of Wichita) SS

This plat of "CORNFIELD ADDITION" Wichita, Sedgwick County, Kansas has been submitted to and approved by the Wichita-Sedgwick County Metropolitan Area Planning Commission, Wichita, Kansas.

Dated this _____ day of _____, 2008.

Wichita-Sedgwick County Metropolitan Area Planning Commission

Chad R. Abbott, L.S. #1340
Benchmark Land Survey

OWNER'S CERTIFICATE

State of Kansas)
County of Sedgwick) SS

Know all men by these presents that we the undersigned owners of the land as above set forth in the Surveyor's Certificate, have caused the same to be surveyed and platted into lots and a block, to be known as "CORNFIELD ADDITION" Wichita, Sedgwick County, Kansas. The streets are hereby dedicated to and for the use of the public. Utility and Drainage easements are hereby granted as indicated for the construction and maintenance of all public utilities. A drainage plan has been developed for the plat and all drainage easements, rights-of-ways, or reserves shall remain at established grades or as modified with the approval of the designated Engineer, and will remain unobstructed to allow for the conveyance of stormwater.

Mitch S. Mitchell, Chairman
John L. Schiegel, Secretary

This plat approved and all dedications shown hereon accepted by the City Council of the City of Wichita, Kansas, this _____ day of _____, 2008.

Carl Brewer, Mayor
Karen Sublett, City Clerk

Entered on transfer record this _____ day of _____, 2008.

Donald Brace, County Clerk

John Elliott
Elena Elliott

State of Kansas)
County of Sedgwick) SS

This is to certify that this instrument has been filed for record in the office of the Register of Deeds, this _____ day of _____, 2008 at _____ o'clock _____ M, and is duly recorded.

NOTARY CERTIFICATE

State of Kansas)
County of Sedgwick) SS

BE IT REMEMBERED, that on this _____ day of _____, 2008, before me the undersigned, a Notary Public in and for the County and State aforesaid, came John Elliott and Elena Elliott, to me personally known to be the same person who executed the foregoing instrument of writing and duly acknowledged the execution of the same.

IN WITNESS WHEREOF, I have hereunto set my hand and affixed my official seal, the day and year above written.

_____, Notary Public
My Appointment Expires: October 29, 2008.

Bill Meek, Register of Deeds

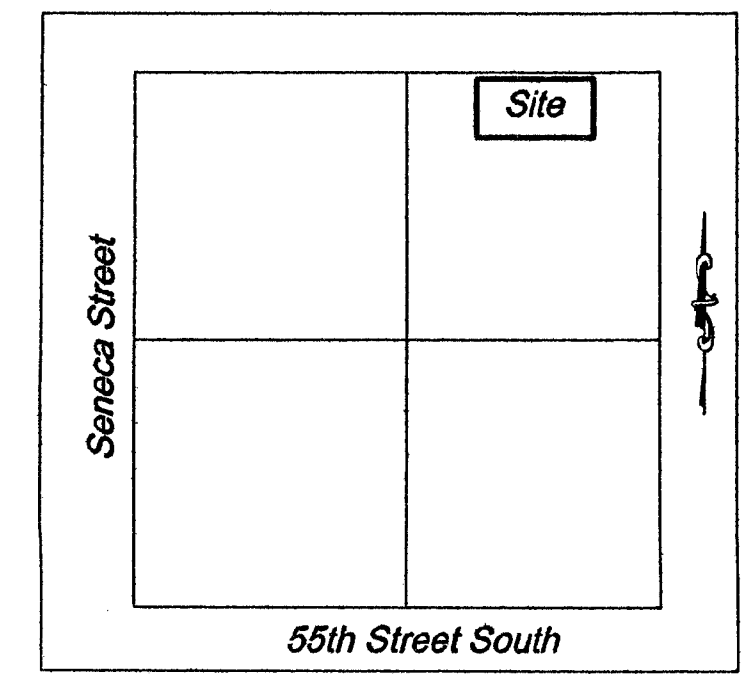
Tonya Buckingham, Deputy

DEPUTY COUNTY SURVEYOR CERTIFICATE

Reviewed in accordance with K.S.A. 58-2005 on this _____ day of _____, 2008.

Tricia L. Robello, L.S. #1246
Deputy County Surveyor
Sedgwick County, Kansas

Vicinity Map
Not to Scale



DATE OF TOPOGRAPHICAL SURVEY - MAY 21, 2004.

LEGEND:

| | |
|---|----------------------------|
| (M) = MEASURED OR CALCULATED FROM MEASUREMENT | — = SIGN (As Noted) |
| (P) = PLATTED | ⊙ = POWER POLE |
| ● = SET 1/2" REBAR WITH #950 CAP | ☀ = LIGHT POLE |
| △ = FOUND 1/2" REBAR (UNLESS OTHERWISE NOTED) | ⊕ = FIRE HYDRANT |
| — x — = FENCE | ⊖ = SANITARY SEWER MANHOLE |
| — O — = OVERHEAD ELECTRIC LINE | |

BENCHMARK:
SENECA AND 55TH STREET SOUTH
CITY OF WICHITA BENCH MARK, NORTHWEST CORNER INTERSECTION
SOUTHEAST CORNER TRAFFIC SIGNAL LIGHT BASE 88.0 FEET WEST
AND 49.4 FEET NORTH OF CENTER LINE OF BOTH. 86.03 FEET
NORTHWEST OF 1/2" IRON ON SECTION CORNER.

ELEVATION = 83.56 (CITY DATUM)
ELEVATION = 1270.98 (NAVD 88)

JOB DESCRIPTION:
Preliminary Plat

PREPARED FOR:
John & Elena Elliott

JOB LOCATION:
Osage Avenue

DATE OF PREPARATION:
July 21, 2008

JOB NUMBER:
9669

SHEET 1 OF 1

