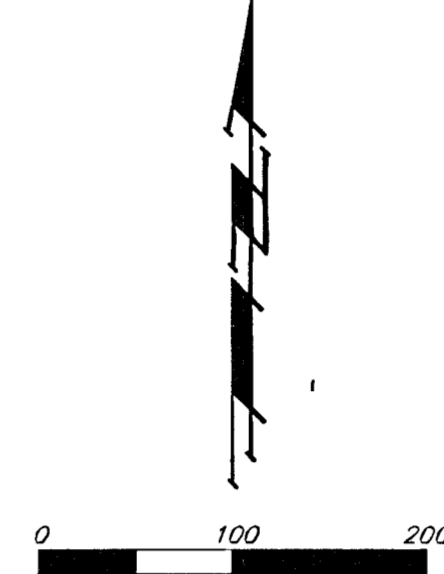
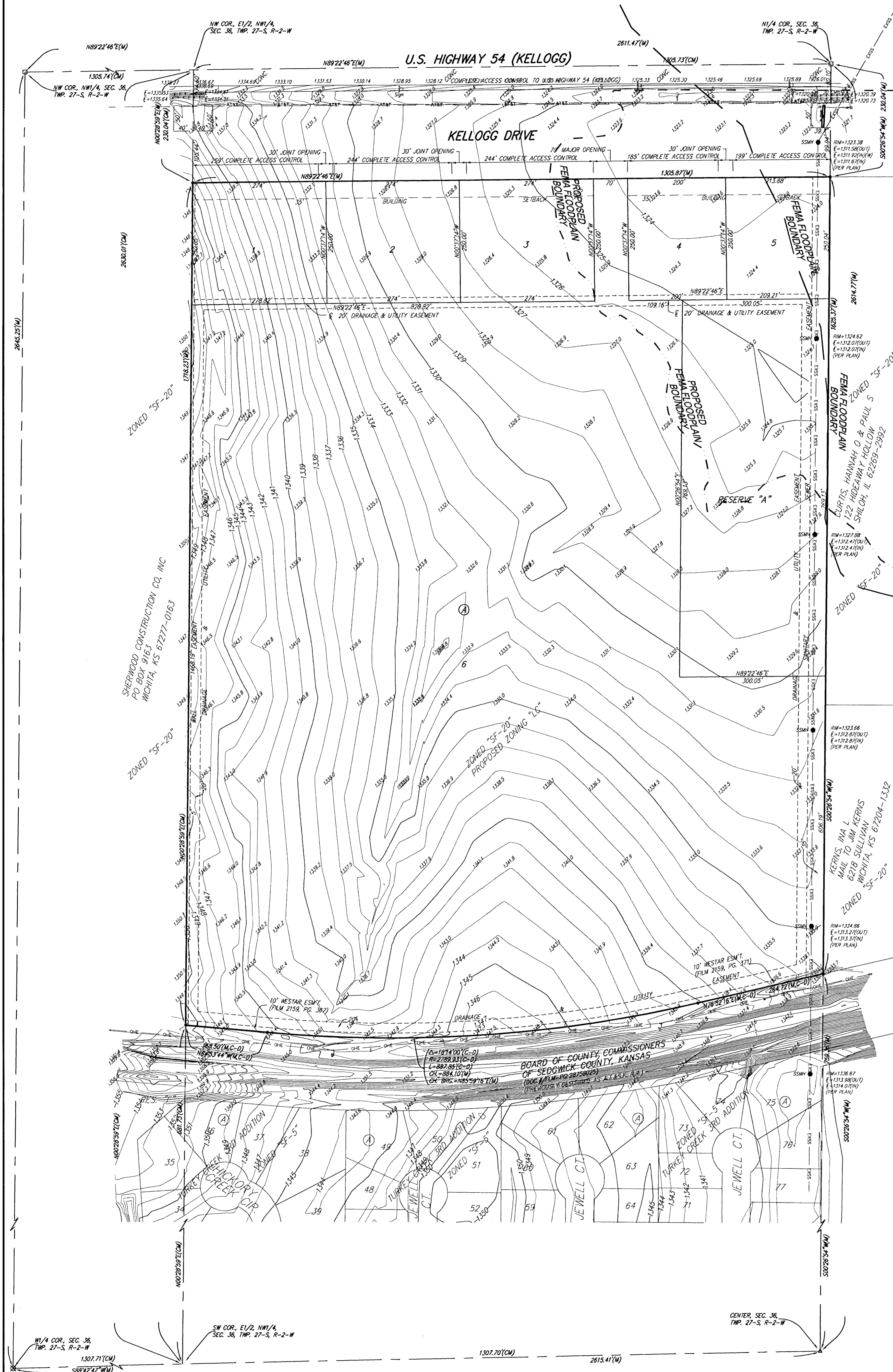


PRELIMINARY PLAT  
**DUGAN WEST KELLOGG COMMERCIAL ADDITION**  
 WICHITA, SEDGWICK COUNTY, KANSAS



DATE OF PREPARATION: 14 SEPTEMBER 2009  
 DATE OF TOPOGRAPHY: 5 JANUARY 2004  
 CONTOUR INTERVALS = 1 FOOT

NOTE:  
 FEMA Floodplain is scaled per location per FEMA  
 FIRM Panel 340 of 700, for Sedgwick County,  
 Kansas, Map Number 201730508E Effective  
 February 2, 2007. The proposed FEMA Floodplain  
 Boundary is scaled per location per City of Wichita  
 LOMR Case # 08-07-0967P.

NOTE:  
 ADDITIONAL BUILDING SETBACK REQUIREMENTS AND  
 RESTRICTIONS FOR DUGAN WEST KELLOGG COMMUNITY  
 UNIT PLAN DP-320.

OWNER:  
 JOHN E. DUGAN  
 2416 MORNING DEW  
 WICHITA, KS 67205  
 316-721-2416

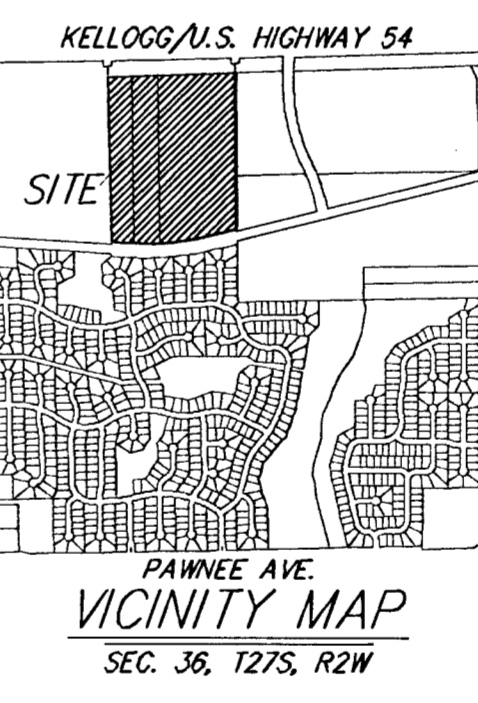
LEGAL DESCRIPTION:  
 THE EAST HALF OF THE NORTHWEST QUARTER OF  
 SECTION 36, TOWNSHIP 27 SOUTH, RANGE 2 WEST  
 OF THE 6TH PRINCIPAL MERIDIAN, SEDGWICK  
 COUNTY, KANSAS, LONG NORTH OF THE A1&S  
 RAILROAD RIGHT-OF-WAY, SUBJECT TO ROAD  
 RIGHTS-OF-WAY OF RECORD.

BENCHMARK:  
 125TH ST. W. & PAWNEE-  
 CITY OF WICHITA BENCHMARK DISC ON SW CORNER  
 OF CONCRETE BASE OF HIGH LINE POLE.  
 ELEV. = 1362.12 NAVD88

- #4 REBAR W/ "BAUGHMAN" CAP (SEI)
- △ = 1" IRON IN BROKEN STONE (FOUND)
- = #5 REBAR IN TRIMBLE (FOUND)
- ⊠ = 1/4" IRON (FOUND)

- (M) = MEASURED
- (D) = DESCRIBED
- (P) = PLATED
- (C) = CALCULATED
- (C-D) = CALCULATED PER DESCRIBED INFO
- (C-P) = CALCULATED PER PLATED INFO

- EB □ = Electric Box
- FH ○ = Fire Hydrant
- GA = Guy Anchor
- HP □ = High Line Pole
- PP □ = Power Pole
- SP = Sign
- SSM ○ = Sanitary Sewer Manhole
- TR ○ = Tree



RESERVE "A" IS RESERVED FOR OPEN SPACE,  
 LANDSCAPING, BERMS, LAKES, DRAINAGE  
 PURPOSES AND UTILITIES AS CONFINED TO  
 EASEMENTS.

BOARD OF COUNTY COMMISSIONERS  
 OF SEDGWICK COUNTY, KANSAS

**DUGAN WEST KELLOGG  
 COMMERCIAL ADDITION**  
 14 SEPTEMBER 2009

**Baughman Company, P.A.**  
 315 E 8th St. Wichita, KS 67211 P 316-262-7271 F 316-262-0149  
 ENGINEERING | SURVEYING | PLANNING | LANDSCAPE ARCHITECTURE

PROJECTS/DUGAN WEST KELLOGG/DUGAN WEST KELLOGG/DWG.RKR