

4/27/05

# FURLEY UNITED METHODIST CHURCH ADDITION

To Sedgwick County, Kansas

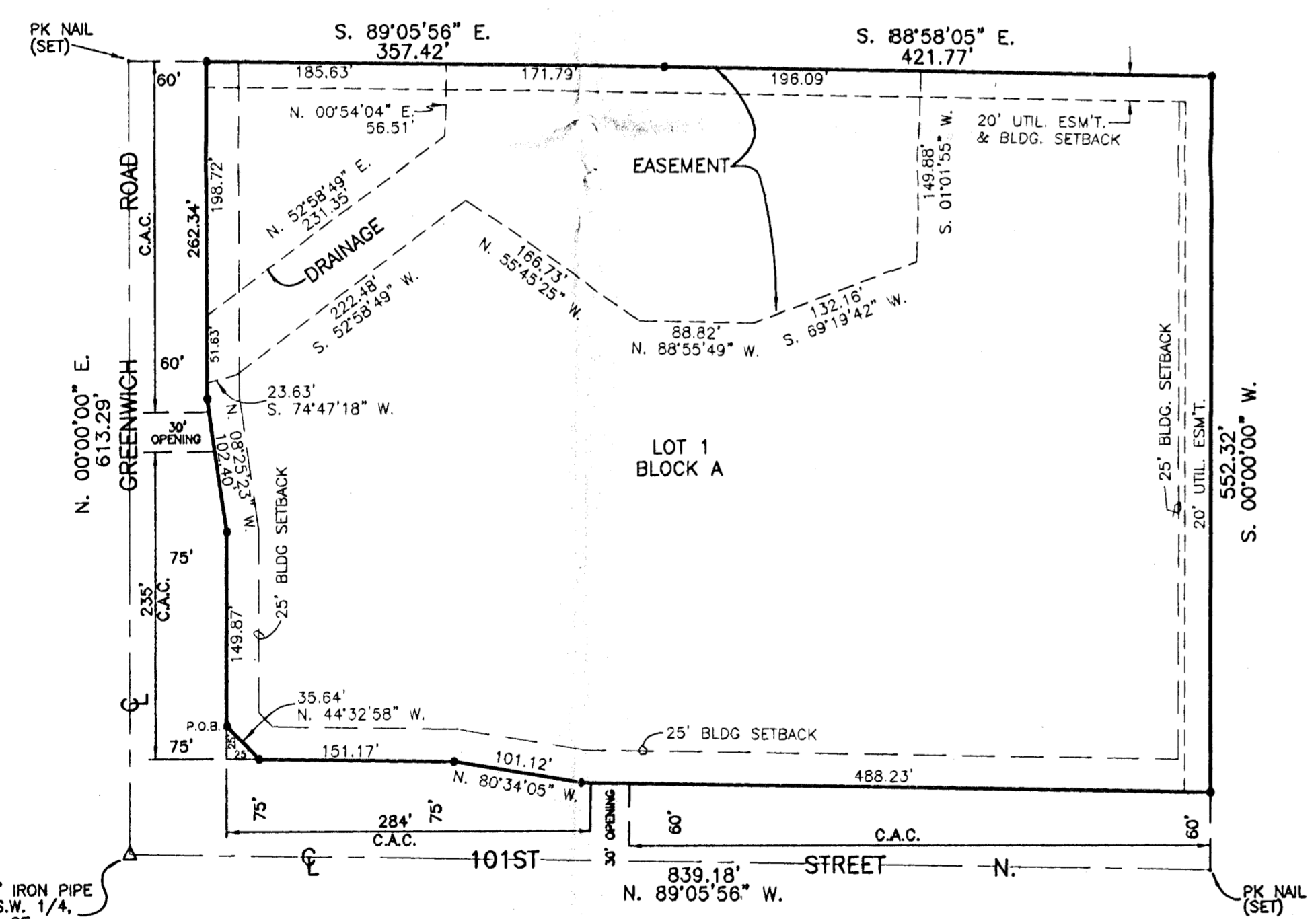


1" = 100'

• = 3/4" IRON W/MOEHRING CAP (SET)

C.A.C. = COMPLETE ACCESS CONTROL

LOT 1, BLOCK A, MIN. PAD ELEV. = 1390.00 M.S.L.



FND - 3/4" IRON PIPE  
S.W. COR. S.W. 1/4,  
SEC. 15-25-2E,  
SEDGWICK CO., KS.

**BENCHMARK**

FLOWLINE OF EAST END OF PIPE UNDER GREENWICH ROAD, APPROX. 374' N. OF THE CENTERLINE OF 101ST ST. N. ELEV. = 1394.77 M.S.L.

STATE OF KANSAS, COUNTY OF SEDGWICK, SS:

I, CRAIG MOEHRING, A REGISTERED LAND SURVEYOR IN SAID STATE AND COUNTY, DO HEREBY CERTIFY THAT I HAVE SURVEYED AND PLATTED "FURLEY UNITED METHODIST CHURCH ADDITION", SEDGWICK COUNTY, KANSAS, INTO A LOT, A BLOCK, A STREET AND A ROAD, THE SAME BEING ACCURATELY SET FORTH ON THE ACCOMPANYING PLAT AND DESCRIBED AS BEGINNING AT A POINT 100 FEET NORTH AND 75 FEET EAST OF THE S.W. CORNER OF THE S.W. 1/4 OF SECTION 15, TOWNSHIP 25 SOUTH, RANGE 2 EAST OF THE 6TH P.M., SEDGWICK COUNTY, KANSAS; THENCE N. 00°00'00" E., PARALLEL WITH THE WEST LINE OF SAID S.W. 1/4, A DISTANCE OF 149.87 FEET; THENCE N. 08°25'23" W., A DISTANCE OF 102.40 FEET; THENCE N. 00°00'00" E., A DISTANCE OF 262.34 FEET; THENCE S. 89°05'56" E., A DISTANCE OF 357.42 FEET; THENCE S. 88°58'05" E., A DISTANCE OF 421.77 FEET; THENCE S. 00°00'00" W., PARALLEL WITH THE WEST LINE OF SAID S.W. 1/4, A DISTANCE OF 552.32 FEET TO A POINT 60 FEET NORTH OF THE SOUTH LINE OF SAID S.W. 1/4; THENCE N. 89°05'56" W., PARALLEL WITH THE SOUTH LINE OF SAID S.W. 1/4, A DISTANCE OF 488.23 FEET; THENCE N. 80°34'05" W., A DISTANCE OF 101.12 FEET; THENCE N. 89°05'56" W., A DISTANCE OF 151.17; THENCE N. 44°32'58" W., A DISTANCE OF 35.64 FEET TO THE POINT OF BEGINNING.

*Craig Moehring*  
CRAIG MOEHRING  
433 S. HYDRAULIC, WICHITA, KANSAS 67211 PH. (316) 263-8291  
L.S. KANSAS #875



KNOW ALL MEN BE THESE PRESENTS THAT WE THE UNDERSIGNED, OWNERS OF THE LAND AS ABOVE SET FORTH IN THE SURVEYOR'S CERTIFICATE, HAVE CAUSED THE SAME TO BE SURVEYED AND PLATTED INTO A LOT, A BLOCK, A STREET AND A ROAD TO BE KNOWN AS "FURLEY UNITED METHODIST CHURCH ADDITION, SEDGWICK COUNTY, KANSAS. THE STREETS ARE HEREBY DEDICATED TO AND FOR THE USE OF THE PUBLIC. EASEMENTS FOR THE CONSTRUCTION AND MAINTENANCE OF PUBLIC UTILITIES ARE HEREBY GRANTED. A DRAINAGE PLAN HAS BEEN DEVELOPED FOR THIS PLAT AND ALL DRAINAGE EASEMENTS, RIGHTS-OF-WAY, OR RESERVES SHALL REMAIN AT ESTABLISHED GRADES OR AS MODIFIED WITH THE APPROVAL OF THE APPLICABLE CITY OR COUNTY ENGINEER, AND UNOBSTRUCTED TO ALLOW FOR THE CONVEYANCE OF STORMWATER. ALL ABUTTER'S RIGHTS OF ACCESS TO AND FROM GREENWICH ROAD ARE HEREBY GRANTED TO THE APPROPRIATE GOVERNING BODY, PROVIDED HOWEVER, THAT GREENWICH ROAD SHALL HAVE ACCESS ACROSS THE WEST LINE OF LOT 1, BLOCK A, AT 1 LOCATION. ALL ABUTTER'S RIGHTS OF ACCESS TO AND FROM 101ST ST. N. ARE HEREBY GRANTED TO THE APPROPRIATE GOVERNING BODY, PROVIDED HOWEVER, THAT 101ST ST. N. SHALL HAVE ACCESS ACROSS THE SOUTH LINE OF LOT 1, BLOCK A, AT 1 LOCATION.

FURLEY UNITED METHODIST CHURCH

*Dennis Hill*  
DENNIS HILL TRUSTEE CHAIRMAN

STATE OF KANSAS, COUNTY OF SEDGWICK, SS:

BE IT REMEMBERED THAT ON THIS 17th DAY OF June, 2005, BEFORE ME, A NOTARY PUBLIC IN AND FOR SAID STATE AND COUNTY, CAME DENNIS HILL, TRUSTEE CHAIRMAN FOR FURLEY UNITED METHODIST CHURCH PERSONALLY KNOWN TO BE THE SAME PERSON WHO EXECUTED THE FOREGOING INSTRUMENT OF WRITING, IN TESTIMONY WHEREOF I HAVE HEREUNTO SET MY HAND AND AFFIXED MY NOTARIAL SEAL THE DAY AND YEAR ABOVE WRITTEN.

*Johnetta Hatfield*  
Johnetta Hatfield  
Notary Public - State of Kansas  
My Appl. Expires 5-19-08  
NOTARY PUBLIC

MY COMMISSION EXPIRES 5-19-2008

THIS PLAT OF "FURLEY UNITED METHODIST CHURCH ADDITION", SEDGWICK COUNTY, KANSAS, HAS BEEN SUBMITTED TO AND APPROVED BY THE WICHITA-SEDGWICK COUNTY METROPOLITAN PLANNING COMMISSION.

DATED THIS \_\_\_\_\_ DAY OF \_\_\_\_\_, 2005.

WICHITA-SEDGWICK COUNTY METROPOLITAN AREA PLANNING COMMISSION

\_\_\_\_\_, CHAIR

\_\_\_\_\_, SECRETARY

THIS PLAT HAS BEEN APPROVED AND ALL DEDICATIONS SHOWN HEREON, IF ANY, ACCEPTED BY THE BOARD OF COMMISSIONERS OF SEDGWICK COUNTY, KANSAS, THIS \_\_\_\_\_ DAY OF \_\_\_\_\_, 2005.

\_\_\_\_\_, CHAIRMAN

ATTEST: \_\_\_\_\_, COUNTY CLERK

STATE OF KANSAS, COUNTY OF SEDGWICK, SS:

THIS IS TO CERTIFY THAT THIS INSTRUMENT WAS FILED FOR RECORD IN THE REGISTER OF DEEDS OFFICE AT \_\_\_\_\_ ON THE \_\_\_\_\_ DAY OF \_\_\_\_\_, 2005.

\_\_\_\_\_, REGISTER OF DEEDS

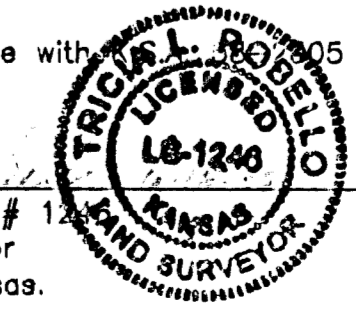
\_\_\_\_\_, DEPUTY

ENTERED ON TRANSFER RECORD THIS \_\_\_\_\_ DAY OF \_\_\_\_\_, 2005.

\_\_\_\_\_, COUNTY CLERK

Reviewed in accordance with \_\_\_\_\_ on this \_\_\_\_\_ day of \_\_\_\_\_, 2005.

Tricia L. Robello, L.S. # 1240  
Deputy County Surveyor  
Sedgwick County, Kansas.



C:\SC2000\2005 WORK\FURLEY\FINAL.DWG