

LEGEND

- W = WATER MAIN
- WM = WATER METER CAN
- UP = UTILITY POLE
- OE = OVERHEAD ELECTRIC
- CP = SURVEY CONTROL POINT



1" = 50'
 • = 3/4" IRON W/MOEHRING CAP (SET)
 DATE OF TOPOGRAPHY - MAR. 18, 2005

PRELIMINARY PLAT
 of
FURLEY UNITED METHODIST CHURCH ADDITION
 To Sedgwick County, Kansas

LEGAL DESCRIPTION

A TRACT OF LAND IN THE WEST HALF OF THE SOUTHWEST QUARTER OF SECTION 15, TOWNSHIP 25 SOUTH, RANGE 2 EAST OF THE 6TH P.M., SEDGWICK COUNTY, KANSAS, DESCRIBED AS BEGINNING AT THE S.W. CORNER OF SAID S.W. 1/4; THENCE ON AN ASSUMED BEARING OF N. 00°00'00" E., ALONG THE WEST LINE OF SAID S.W. 1/4, A DISTANCE OF 613.29 FEET; THENCE S. 89°05'56" E., PARALLEL WITH THE SOUTH LINE OF SAID S.W. 1/4, A DISTANCE OF 417.42 FEET; THENCE S. 88°58'05" E., A DISTANCE OF 421.77 FEET; THENCE S. 00°00'00" W., PARALLEL WITH THE WEST LINE OF SAID S.W. 1/4, A DISTANCE OF 612.32 FEET TO A POINT IN THE SOUTH LINE OF SAID S.W. 1/4; THENCE N. 89°05'56" W., ALONG THE SOUTH LINE OF SAID S.W. 1/4, A DISTANCE OF 839.18 FEET TO THE POINT OF BEGINNING, EXCEPT THE WEST 40 FEET AND THE SOUTH 40 FEET THEREOF FOR STREET.

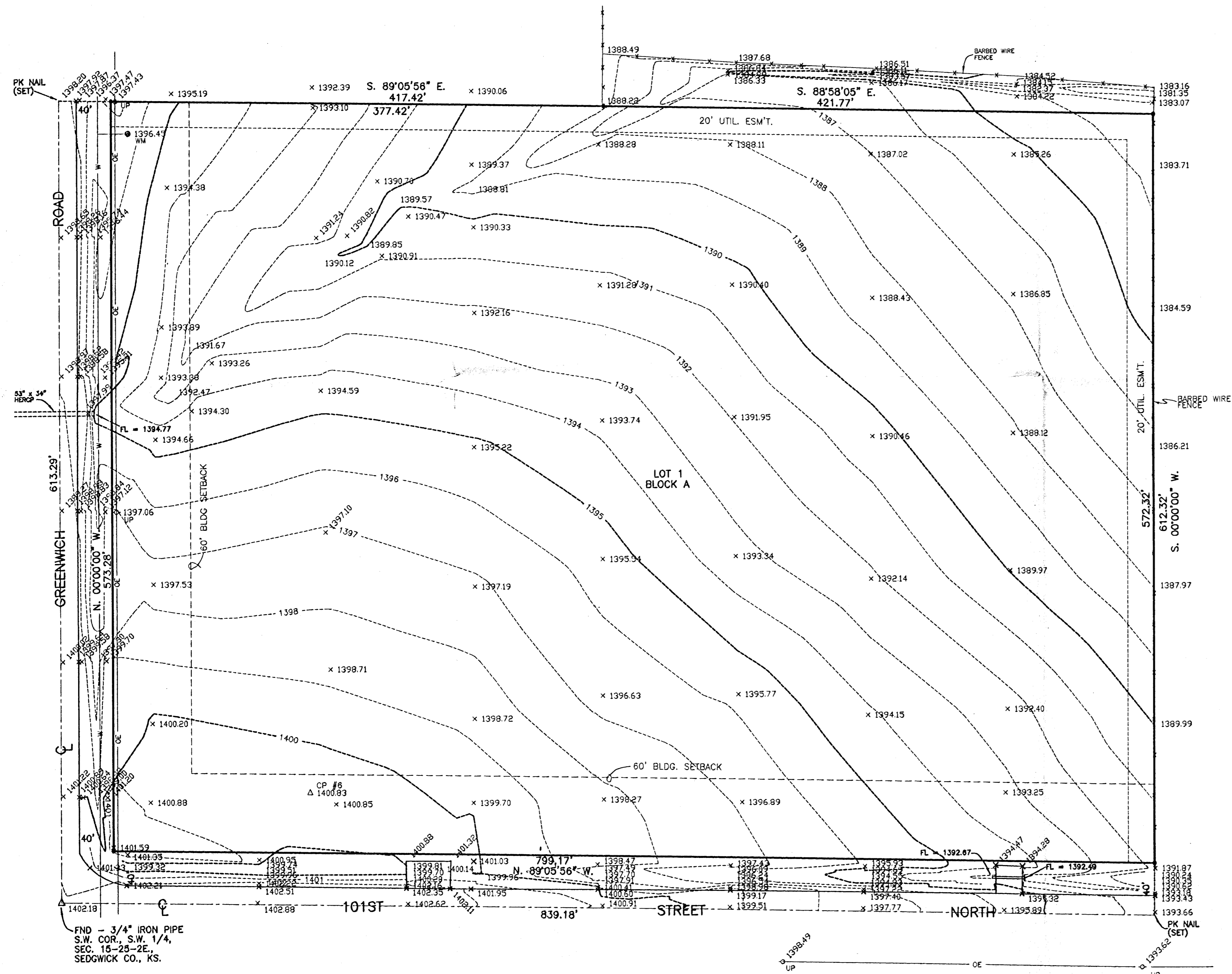
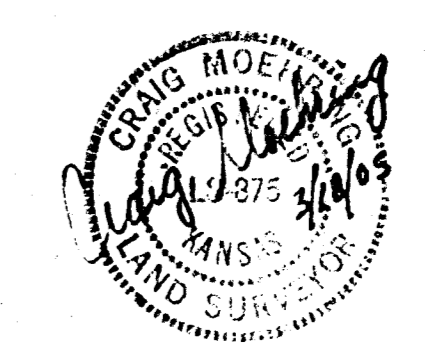
OWNER

FURLEY UNITED METHODIST CHURCH
 400 EAST 4TH STREET
 FURLEY, KANSAS 67147

BENCHMARK

60d NAIL IN UP, S.E. CORNER
 101ST ST. N. & GREENWICH RD.
 ELEV. = 1401.82 N.G.V.D.

MOEHRING & ASSOCIATES
 433 S. HYDRAULIC
 WICHITA, KS.
 263-8291



C:\SC2000\2005 WORK\FURLEY.PRED.DWG