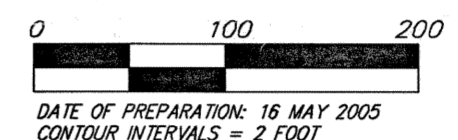
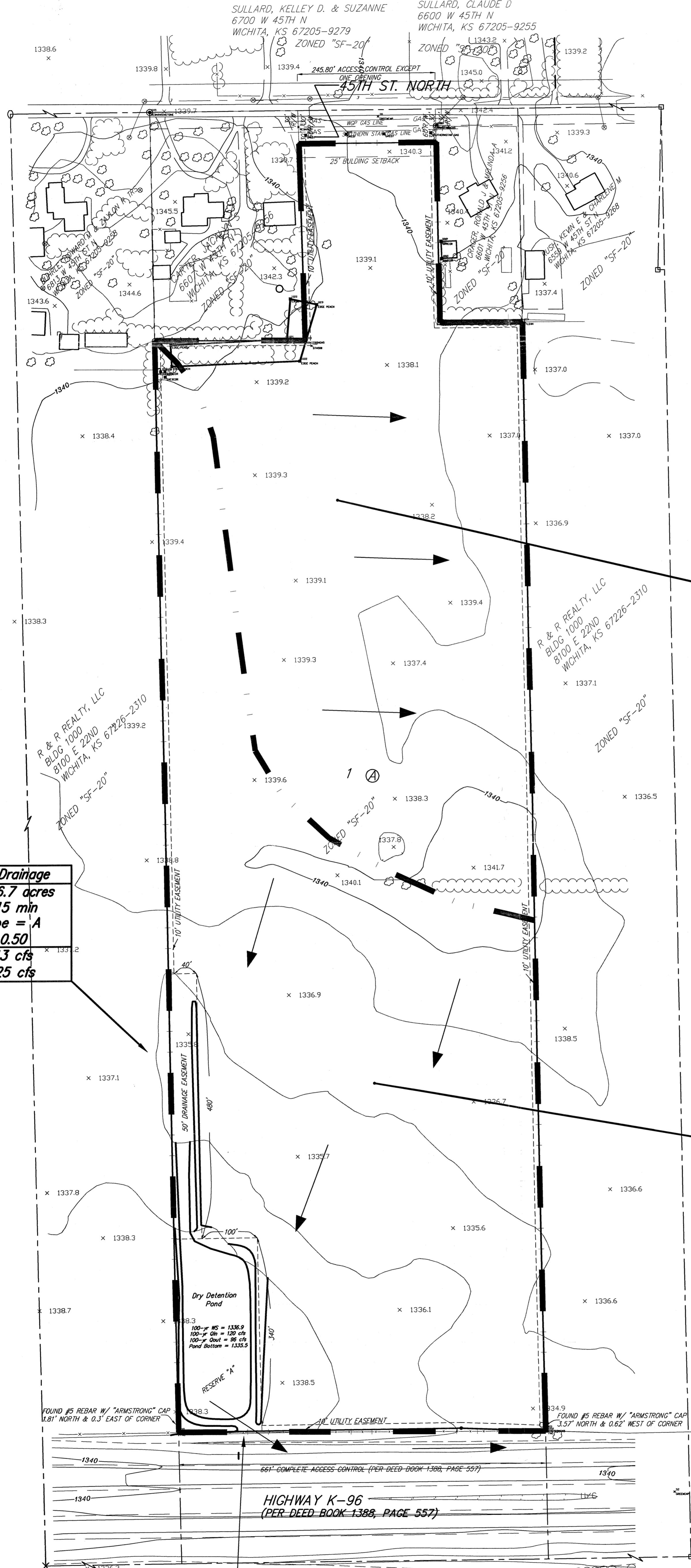


DRAINAGE PLAN MIDLAND BAPTIST CHURCH 2ND ADDITION SEDGWICK COUNTY, KANSAS

SULLARD, KELLEY D. & SUZANNE
6700 W 45TH N
WICHITA, KS 67205-9279
ZONED "SF-20"

SULLARD, CLAUDE D
6600 W 45TH N
WICHITA, KS 67205-9255
ZONED "SF-20"



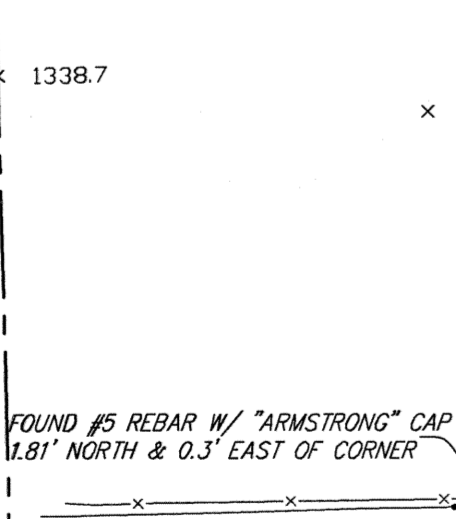
DATE OF PREPARATION: 16 MAY 2005
CONTOUR INTERVALS = 2 FOOT

BENCHMARK:
RAILROAD SPIKE IN POWER POLE, 38'
EAST AND 28' NORTH OF THE NW
CORNER OF SECTION 27, TWP. 26-S,
R-1-W.
ELEV. = 1336.69 NGVD29

Offsite Drainage	
Area = 6.7 acres	
$T_c = 15 \text{ min}$	
Soil Type = A	
$C = 0.50$	
$Q_x = 13 \text{ cfs}$	
$Q_{100} = 25 \text{ cfs}$	

DA = 13.8 acres	
Existing = Developed	
$C' = 0.55$	
$Q_x = 29 \text{ cfs}$	
$Q_s = 35 \text{ cfs}$	
$Q_{10} = 40 \text{ cfs}$	
$Q_{100} = 56 \text{ cfs}$	

DA = 18.3 acres	
Existing	Developed
$C' = 0.55$	$C' = 0.80$
$Q_x = 39 \text{ cfs}$	$Q_x = 56 \text{ cfs}$
$Q_s = 46 \text{ cfs}$	$Q_s = 67 \text{ cfs}$
$Q_{10} = 53 \text{ cfs}$	$Q_{10} = 76 \text{ cfs}$
$Q_{100} = 74 \text{ cfs}$	$Q_{100} = 108 \text{ cfs}$

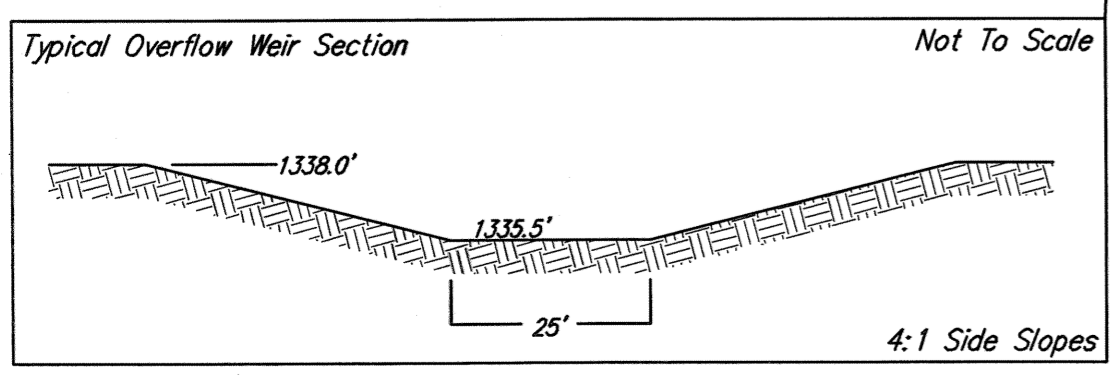
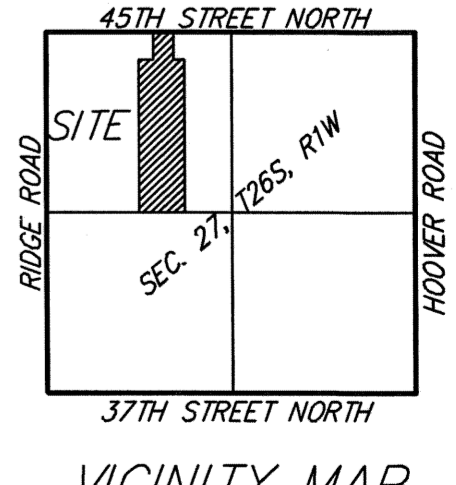


FOUND #5 REBAR W/ "ARMSTRONG" CAP 1.81' NORTH & 0.3' EAST OF CORNER

FOUND #5 REBAR W/ "ARMSTRONG" CAP 3.57' NORTH & 0.62' WEST OF CORNER

HIGHWAY K-96
(PER DEED BOOK 1388, PAGE 557)

ZONED "SF-20"
NICHOLSON, DEAN & PAULINE LIV TR
4106 N RIDGE ROAD
WICHITA, KS 67205-8825



REVISED 03 OCTOBER 2005
16 MAY 2005