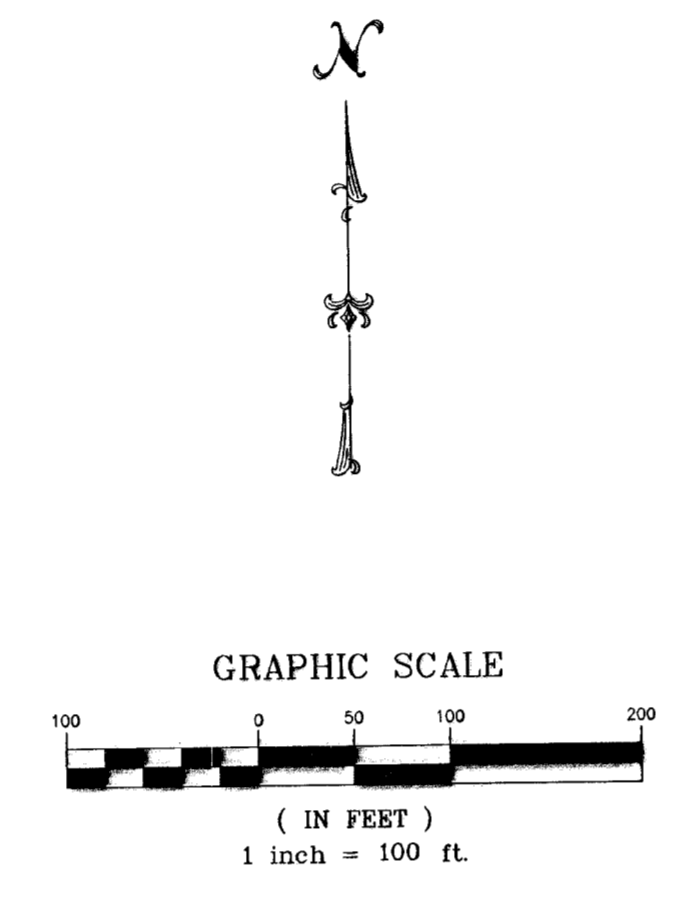
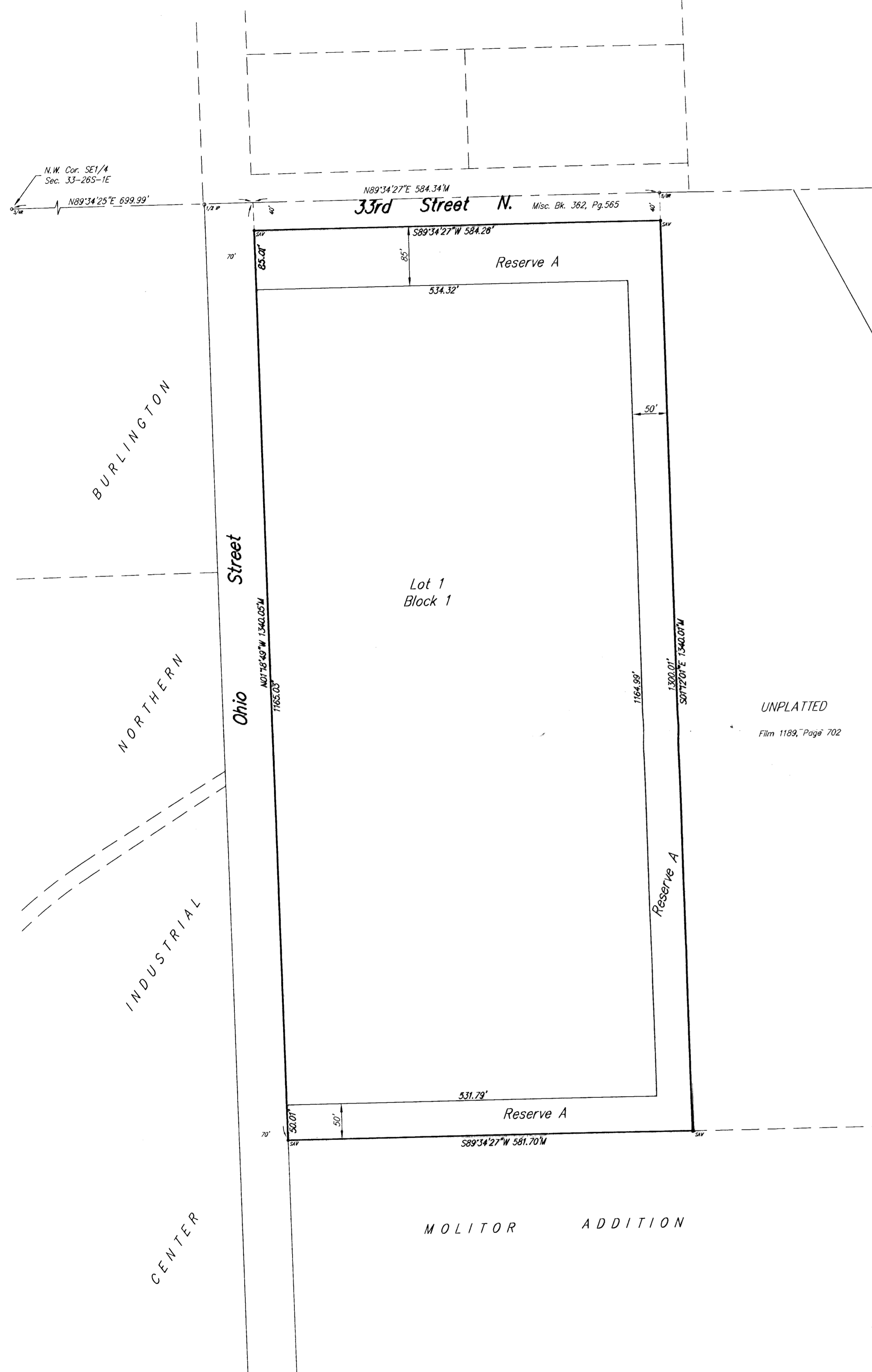


4-16-07

# GROENDYKE ADDITION

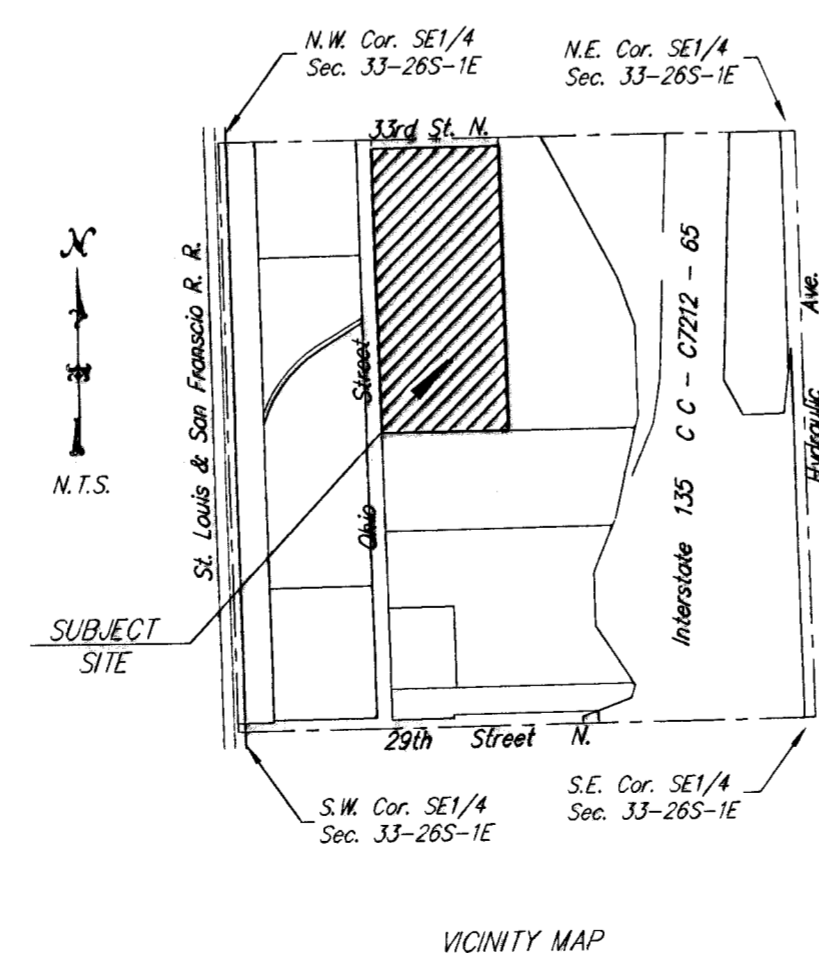
## WICHITA, SEDGWICK COUNTY, KANSAS



Bench Mark: Roll Road Spike in Hubguard  
SW Corner of RCBC under Ohio St. 75' N. of  
29th Street N.  
Elevation = 1317.01 NGVD

On Site B.M.: Chiseled Square on Top of Curb  
at S. End of Ditch Basin E. Side Ohio at S. Curb  
Return  
Elevation = 1316.75 NGVD

UNPLATTED  
Film 1189, Page 702



State of Kansas) SS  
Sedgwick County)

We, Savoy Company, P.A., Surveyors in aforesaid county and state do hereby certify that, under the supervision of the undersigned, we have surveyed and platted "GROENDYKE ADDITION", Wichita, Sedgwick County, Kansas and that the accompanying plat is a true and correct exhibit of the property surveyed, described as:

That part of the SE1/4 of Sec. 33, Twp. 28-S, R-1-E of the 6th P.M., Sedgwick County, Kansas described as commencing at the N.E. Corner thereof; thence S89°34'27"W, 1370.97 feet to the N.W. Corner of property deeded by Film 1189, at page 702 for a place of beginning; thence S01°12'01"E, along the west line of said property created by Film 1189, page 702, 1340.01 feet to the S.W. Corner thereof and being a point on the north line of property deeded by Film 2881 at page 5150; thence S89°34'27"W, along the north line of said property created by Film 2881 at page 5150, 581.70 feet to the east line of Ohio Street, as platted in Burlington Northern Industrial Center, Wichita, Sedgwick County, Kansas; thence N01°18'49"W, along the east line of said Ohio Street, 1340.05 feet to the north line of said SE1/4; thence N89°34'27"E, along the north line of said SE1/4, 584.34 feet to the place of beginning; EXCEPT that part dedicated for street on Book Misc. 362, Page 565.

All Public easements and dedications being vacated by virtue of K.S.A. 12-512(b).

Savoy Company, P.A.

Date 12 APR 2007  
  
 Mark A. Savoy Surveyor

Know all men by these presents that I, the undersigned, have caused the land described in the surveyors certificate to be platted into a Lot and Block to be known as "GROENDYKE ADDITION", Wichita, Sedgwick County, Kansas. The utility easements are hereby granted for the construction and maintenance of all public utilities. The Drainage and Utility easement is hereby granted for the construction and maintenance of all public utilities and for drainage purposes. A drainage plan has been developed for this plat and all drainage easements, rights-of-way, or reserves shall remain at established grades, or as modified with the approval of the City Engineer, and unobstructed to allow for the conveyance of stormwater.

Groendyke Transport, Inc.

John D. Groendyke Chairman of the Board, CEO

State of Kansas) SS  
Sedgwick County)

The foregoing instrument acknowledged before me, this 26 day of March, 2007, by John D. Groendyke, Chairman of the Board, CEO of Groendyke Transport, Inc. on behalf of the corporation.

Katherine E. Thompson Notary Public

My App't. Exp. 7-22-08  
 # 00010774

This plat of "GROENDYKE ADDITION", Wichita, Sedgwick County, Kansas, has been submitted to and approved by the Wichita-Sedgwick County Metropolitan Area Planning Commission, Wichita, Kansas.

Dated this \_\_\_\_\_ day of \_\_\_\_\_, 2006.  
 Wichita-Sedgwick County Metropolitan Area Planning Commission

\_\_\_\_\_  
 Darrell A. Downing Chairman

\_\_\_\_\_  
 John L. Schlegel Secretary

This plat approved and all dedications shown hereon, accepted by the City Council of the City of Wichita, Kansas, this \_\_\_\_\_ day of \_\_\_\_\_, 2007.

\_\_\_\_\_  
 Carlos Mayans Mayor

\_\_\_\_\_  
 Karen Sublett City Clerk

Reviewed in accordance with K.S.A. 58-2005 on this 12th day of APRIL, 2007.

L. Robello, LS #1246 Deputy County Surveyor  
 Sedgwick County Kansas

Entered on transfer record this \_\_\_\_\_ day of \_\_\_\_\_, 2007.

\_\_\_\_\_  
 Don Brace County Clerk

State of Kansas) SS  
Sedgwick County)

This is to certify that this plat has been filed for record in the office of the Register of Deeds, this \_\_\_\_\_ day of \_\_\_\_\_, 2007, at o'clock \_\_\_\_\_ M. and is duly recorded.

\_\_\_\_\_  
 Bill Meek Register of Deeds

\_\_\_\_\_  
 Tonya Buckingham Deputy