

**NOTES**

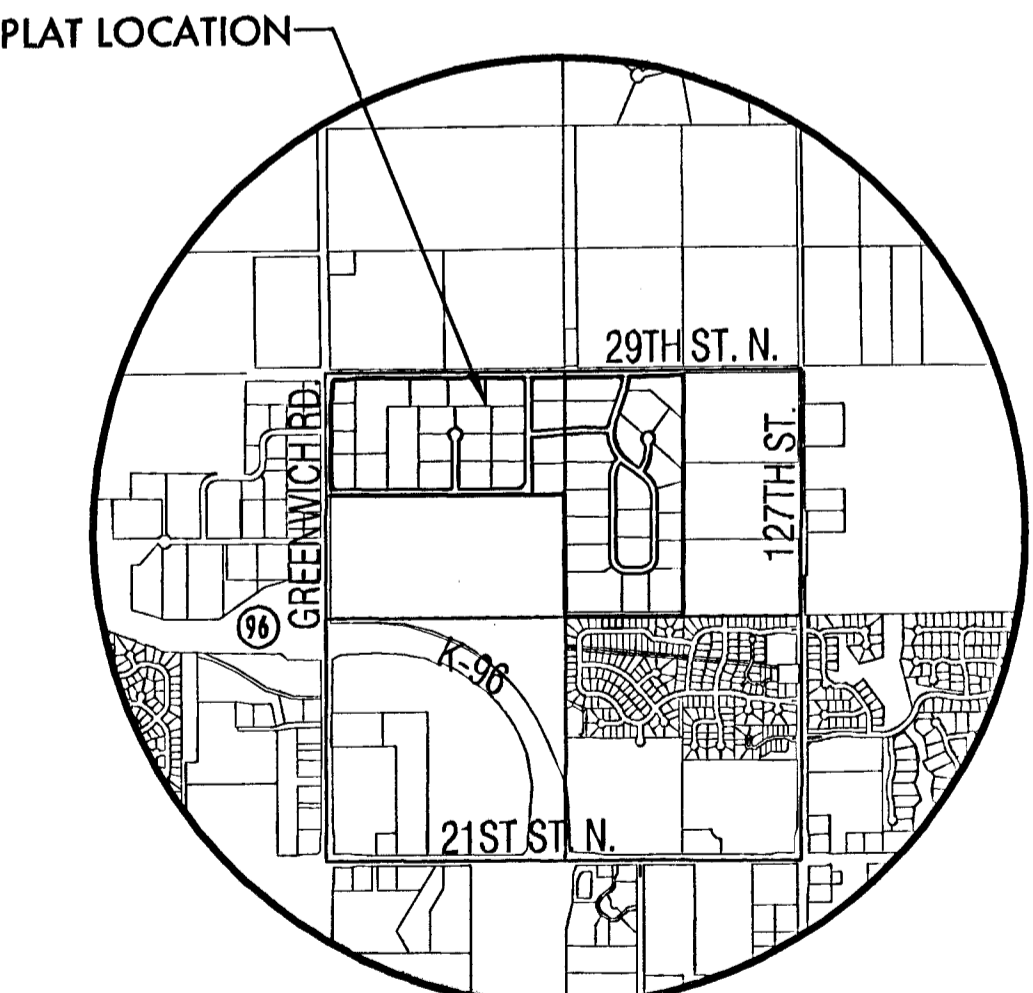
1. ZONING: Existing - SF-20 and RR  
Proposed - U upon annexation w/ P.O.
2. ANNEXATION: An application for annexation shall be submitted to the City of Wichita
3. PUBLIC UTILITIES: Shall be extended to site by petition
4. EXISTING USE: Vacant Land and Cultivated Fields
5. PLAT AREA: Gross= 158.81 Ac.  
Net=155.65 Ac.
6. SURVEY DATE: May 12th, 2005 (by MKEC)
7. MINIMUM PADS: As shown on the Final Drainage Plan
8. LOT TOTAL - 42
9. RESERVES USES: Open space, drainage, utilities, in designated locations, monuments, landscaping, and irrigation.

**BENCH MARK**

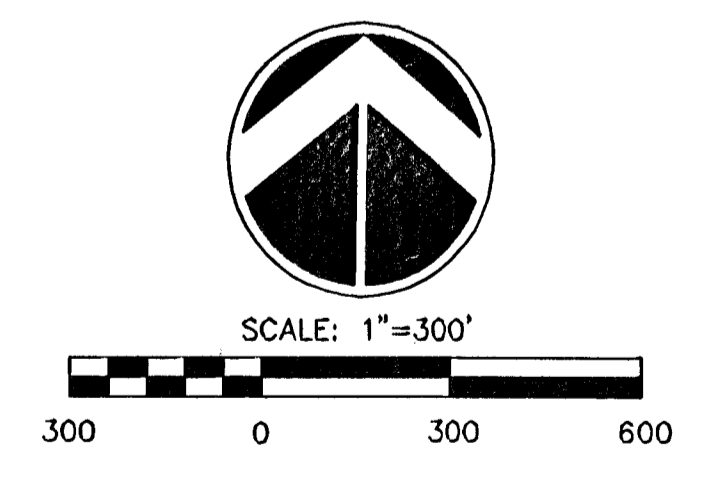
BM #1 Brass Disc on top of curb in front of fire hydrant, Lot 1, Block 1, Recency Park Addition, an Addition to Wichita, Sedgwick County, KS  
Elev.=191.56 (City of Wichita)  
1378.96 (NGVD 29)

**LEGEND**

- △ - Sec. Corner
- ◉ - Frnd. Prop. Corner
- GM - GAS METER
- SSMH - SANITARY SEWER MANHOLE
- PP - POWER POLE/GUY ANCHOR
- EB - ELECTRIC BOX
- SN - SIGN
- G - GATE
- T - TREES
- ET - EDGE OF TREES
- P - POLE
- HLP - HIGH TENSION POWER LINE
- FH - FIRE HYDRANT
- WV - WATER VALVE
- WM - WATER METER
- TR - TELEPHONE RISER
- FENCE
- STORM SEWER PIPE
- WATER LINE
- SANITARY SEWER LINE
- GAS LINE
- TELEPHONE LINE
- OVERHEAD ELECTRIC
- ZONED PARCELS
- STREET DEDICATION WIDTH VARIES 60' ALONG S.L. 75' AT INTERSECTION
- WATERSHED BOUNDARIES
- DRAINAGE BOUNDARIES
- DRAINAGE AREAS
- WATERSHED AREAS
- - FLOW ARROW



**VICINITY MAP**



# PROPOSED DETENTION PLAN GREENWICH BUSINESS CENTER ADDITION

Revised Date: January, 2006

OWNER / DEVELOPER: Ritchie Development Corporation 8100 E. 22nd North, #1000 Wichita, KS 67226-2310 (316) 684-7300

Date: August, 2005



J:\Civil\05039\Draw\Prop\05039proposed detention.pln.dwg 12/13/2005 11:13:14 AM CST