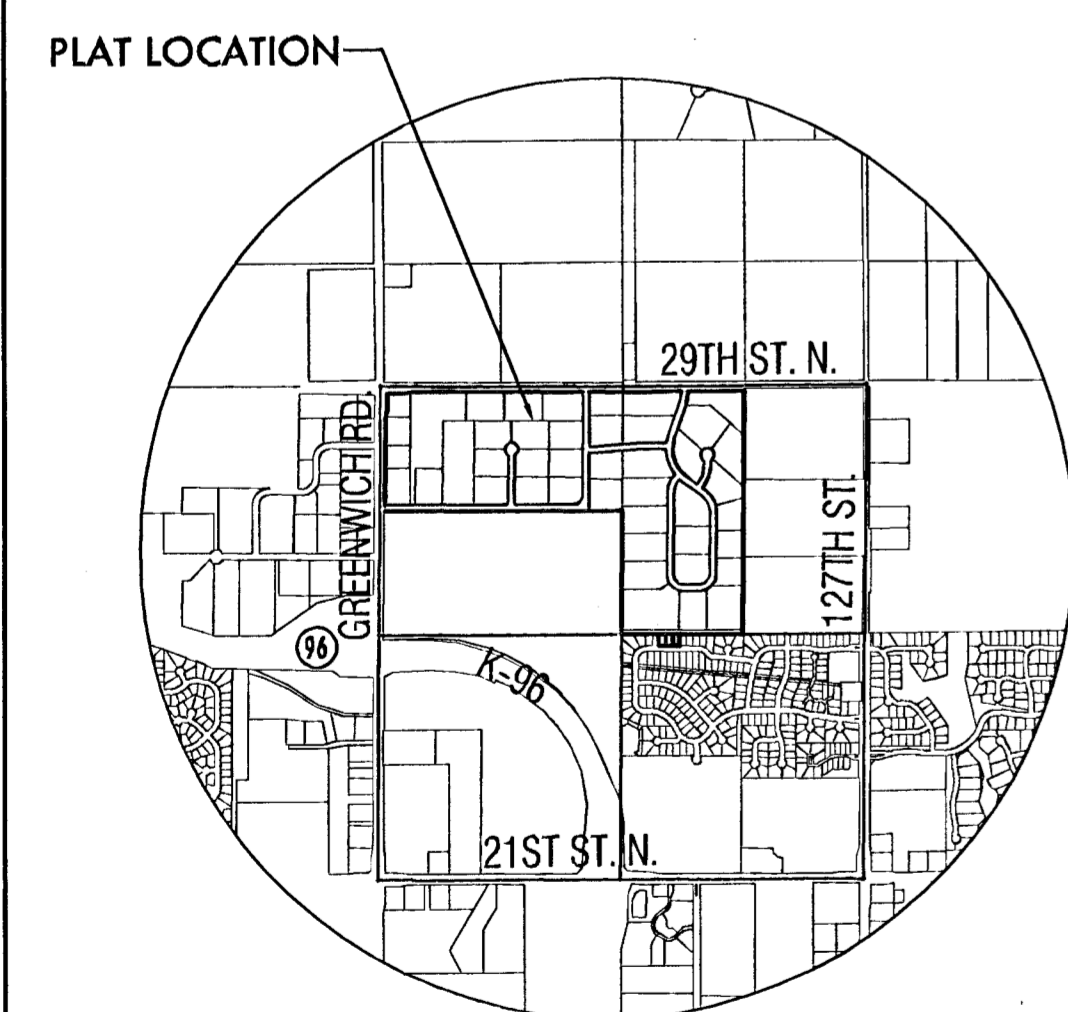


BENCH MARK

Brass Disc on top of curb in front of fire hydrant, Lot 1, Block 1, Recency Park Addition, an Addition to Wichita, Sedgwick County, KS

Elev.=191.56 (City of Wichita)
1378.96 (NGVD 29)



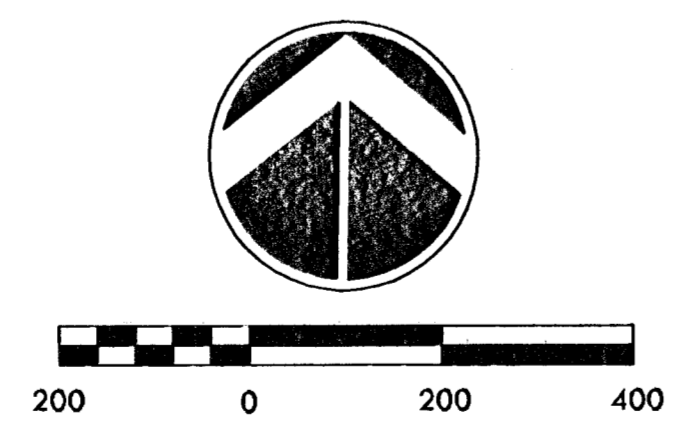
VICINITY MAP

NOTES

1. ZONING: Existing - SF-20 and RR
Proposed - LI upon annexation w/ P.O.
2. ANNEXATION: An application for annexation shall be submitted to the City of Wichita
3. PUBLIC UTILITIES: Shall be extended to site by petition
4. EXISTING USE: Vacant Land and Cultivated Fields
5. PLAT AREA: Gross= 158.81 Ac.
Net = 155.65 Ac.
6. SURVEY DATE: May 12th, 2005 (by MKEC)
7. MINIMUM PADS: As shown on the Final Drainage Plan
8. LOT TOTAL - 42
9. RESERVES USES: Open space, drainage, utilities, in designated locations, monuments, landscaping, and irrigation.

LEGEND

- △ - Sec. Corner
- ⊙ - Fnd. Prop. Corner
- GM - GAS METER
- SMH - SANITARY SEWER MANHOLE
- PP - POWER POLE/GUY ANCHOR
- KB - ELECTRIC BOX
- SL - SIGN
- G - GATE
- T - TREES
- ET - EDGE OF TREES
- P - POLE - POLE
- HLP - HIGH TENSION POWER LINE
- FH - FIRE HYDRANT
- WV - WATER VALVE
- WM - WATER METER
- TR - TELEPHONE RISER
- F - FENCE
- SSP - STORM SEWER PIPE
- WL - WATER LINE
- SSL - SANITARY SEWER LINE
- GL - GAS LINE
- TL - TELEPHONE LINE
- OE - OVERHEAD ELECTRIC
- ZP - ZONED PARCELS
- SD - STREET DEDICATION WIDTH VARIES 60' ALONG S.L. 75' AT INTERSECTION



PRELIMINARY PLAT
GREENWICH BUSINESS CENTER ADDITION

OWNER / DEVELOPER: Ritchie Development Corporation 8100 E. 22nd North, #1000 Wichita, KS 67226-2310 (316) 684-7300

Date: JULY 18th, 2005



6/27/2005 11:14:11 AM CST
C:\Users\jw\Documents\Projects\Greenwich\Preplat.dwg