

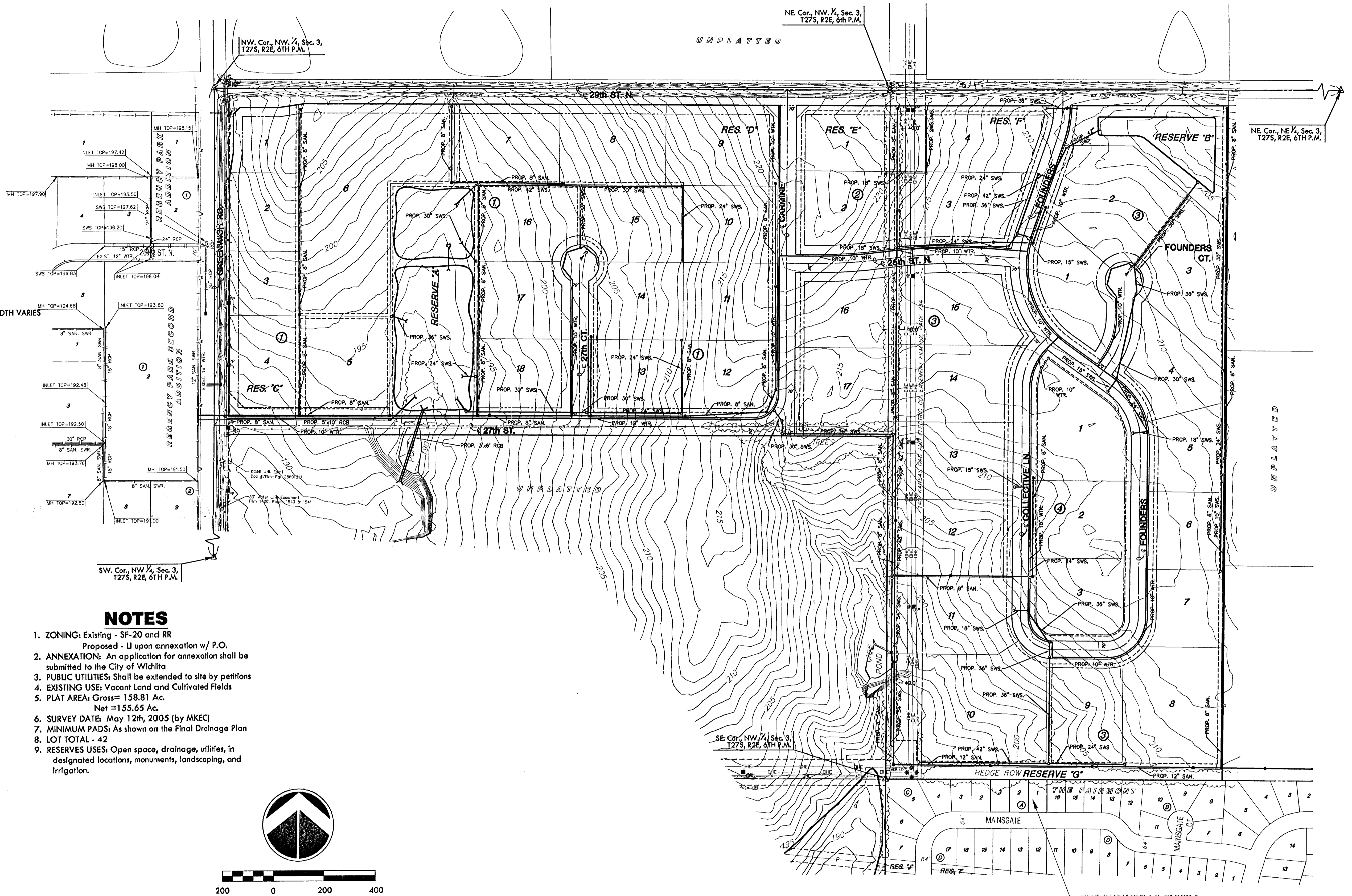
BENCH MARK

Brass Disc on top of curb in front of fire hydrant,
Lot 1, Block 1, Recency Park Addition, an Addition
to Wichita, Sedgwick County, KS

Elev.=191.56 (City of Wichita)
1378.96 (NGVD 29)

LEGEND

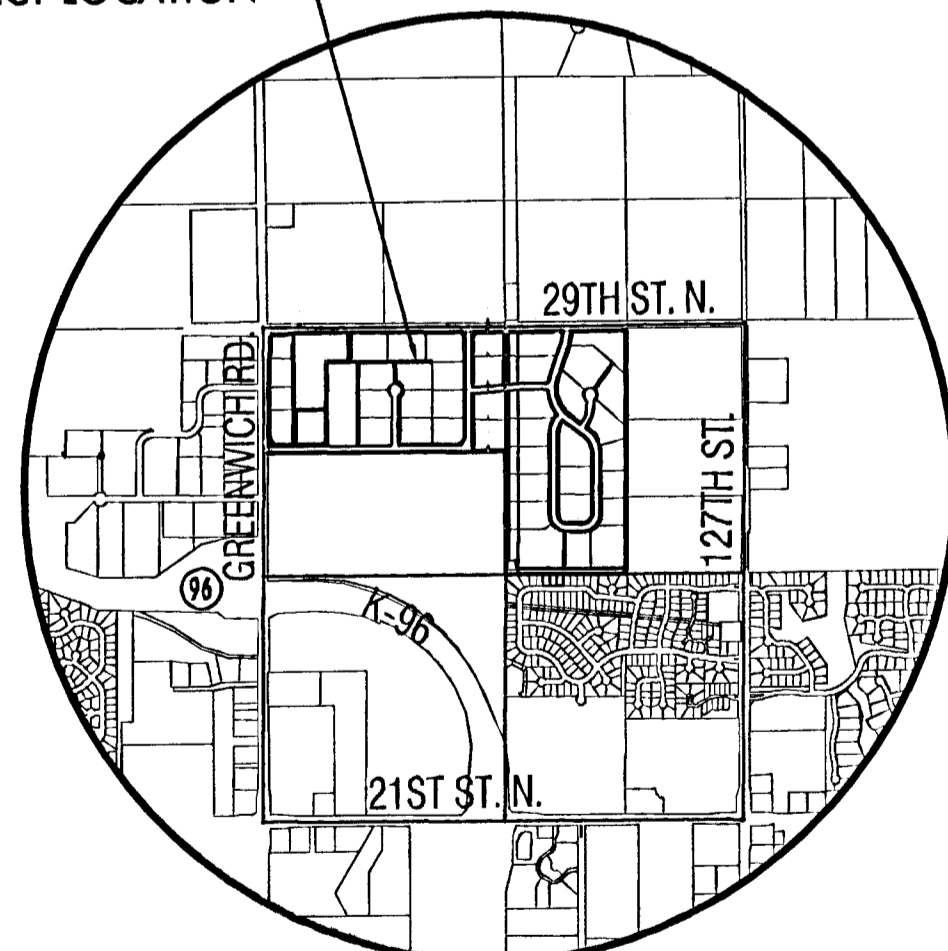
- | | |
|-----------------------------|---|
| △ - Sec. Corner | ○ - FIRE HYDRANT |
| ● - Frnd. Prop. Corner | ○ - WATER VALVE |
| ○ - GAS METER | ○ - WATER METER |
| ○ - SANITARY SEWER MANHOLE | ○ - TELEPHONE RISER |
| ○ - POWER POLE/GUY ANCHOR | ○ - FENCE |
| ○ - ELECTRIC BOX | ○ - STORM SEWER PIPE |
| ○ - SIGN | ○ - WATER LINE |
| ○ - GATE | ○ - SANITARY SEWER LINE |
| ○ - TREES | ○ - GAS LINE |
| ○ - EDGE OF TREES | ○ - TELEPHONE LINE |
| ○ - POLE - POLE | ○ - OVERHEAD ELECTRIC |
| ○ - HIGH TENSION POWER LINE | ○ - ZONED PARCELS |
| | ○ - STREET DEDICATION WIDTH VARIES
60' ALONG S.L.
75' AT INTERSECTION |



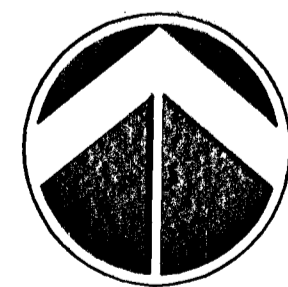
NOTES

- ZONING:** Existing - SF-20 and RR
Proposed - U upon annexation w/ P.O.
- ANNEXATION:** An application for annexation shall be submitted to the City of Wichita
- PUBLIC UTILITIES:** Shall be extended to site by petitions
- EXISTING USE:** Vacant Land and Cultivated Fields
- PLAT AREA:** Gross= 158.81 Ac.
Net =155.65 Ac.
- SURVEY DATE:** May 12th, 2005 (by MKEC)
- MINIMUM PADS:** As shown on the Final Drainage Plan
- LOT TOTAL - 42**
- RESERVES USES:** Open space, drainage, utilities, in designated locations, monuments, landscaping, and Irrigation.

PROJECT LOCATION



VICINITY MAP



UTILITY PLAN

GREENWICH BUSINESS CENTER ADDITION

OWNER / DEVELOPER: Ritchie Development Corporation 8100 E. 22nd North, #1000 Wichita, KS 67226-2310 (316) 684-7300

Revised Date: January, 2006

Date: August, 2005



6/27/2005 11:14:11 AM CST
 J:\C:\DWG\05039\05039.dwg
 6/27/2005 11:14:11 AM CST