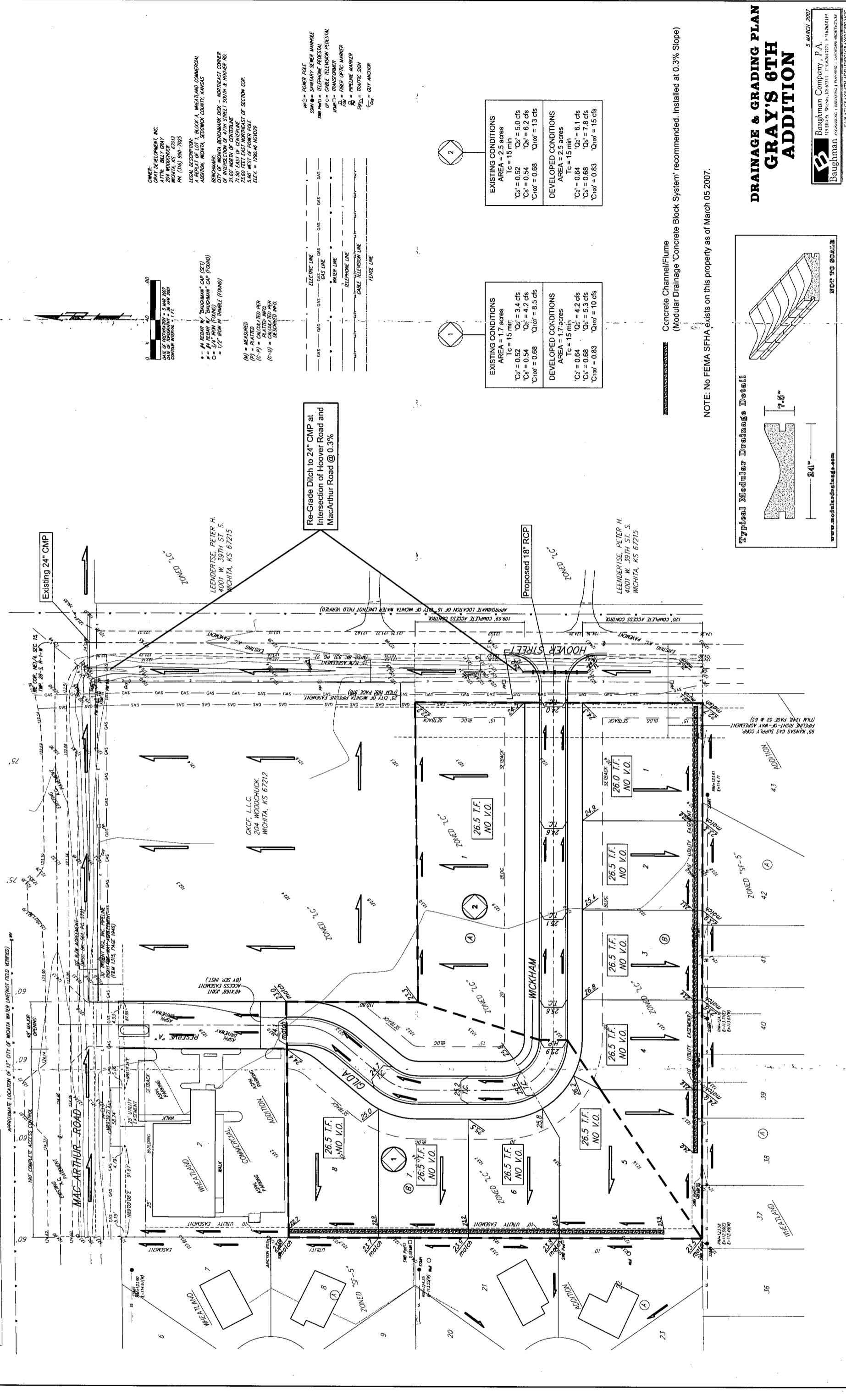


# DRAINAGE & GRADING PLAN

## GRAY'S 6TH ADDITION

### WICHITA, SEDGWICK COUNTY, KANSAS



**OWNER:**  
 GRAY DEVELOPMENT, INC.  
 1715 W. 39TH ST.  
 WICHITA, KS 67212  
 PH: (316) 946-1025

**LEGAL DESCRIPTION:**  
 BLOCK 4, WESTLAND COMMERCIAL  
 ADDITION, WICHITA, SEDGWICK COUNTY, KANSAS

**BENCHMARK:**  
 CITY OF WICHITA BENCHMARK CORNER - NORTHWEST CORNER  
 1410 W. 39TH ST. & WICKHAM RD.  
 71.50' EAST OF CENTERLINE  
 21.00' NORTH OF CENTERLINE  
 21.00' WEST OF CENTERLINE  
 ELEV. = 1206.46 (NGVD)

**NOTES:**  
 (N) = MEASURED  
 (P) = PLANTED  
 (C-1) = CASTED IN PLACE  
 (C-2) = CASTED IN PLACE

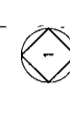
**SYMBOLS:**  
 ■ = REBAR  
 ○ = BAUGHMAN CAP (ST)  
 ○ = BAUGHMAN CAP (ROUND)  
 ○ = 1/2" RIBBON IN THUMB (ROUND)

**UTILITIES:**  
 ■ = 4" RIBBON  
 ○ = 6" RIBBON  
 ○ = 8" RIBBON  
 ○ = 10" RIBBON  
 ○ = 12" RIBBON  
 ○ = 15" RIBBON  
 ○ = 18" RIBBON  
 ○ = 24" RIBBON  
 ○ = 30" RIBBON  
 ○ = 36" RIBBON  
 ○ = 42" RIBBON  
 ○ = 48" RIBBON  
 ○ = 54" RIBBON  
 ○ = 60" RIBBON  
 ○ = 66" RIBBON  
 ○ = 72" RIBBON  
 ○ = 78" RIBBON  
 ○ = 84" RIBBON  
 ○ = 90" RIBBON  
 ○ = 96" RIBBON  
 ○ = 102" RIBBON  
 ○ = 108" RIBBON  
 ○ = 114" RIBBON  
 ○ = 120" RIBBON

EXISTING CONDITIONS	
AREA = 2.5 acres	
Tc = 15 min	
C <sub>1</sub> = 0.52	C <sub>2</sub> = 6.0 cfs
C <sub>3</sub> = 0.54	C <sub>4</sub> = 6.2 cfs
C <sub>5</sub> = 0.58	C <sub>6</sub> = 6.9 cfs
C <sub>100</sub> = 0.68	C <sub>100</sub> = 13 cfs

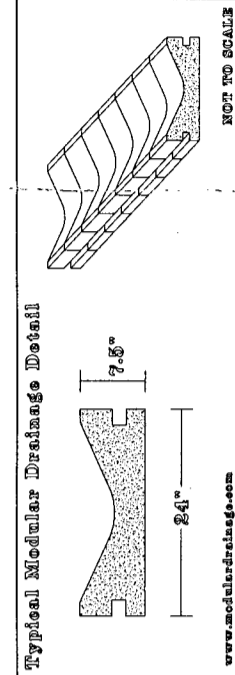
  

DEVELOPED CONDITIONS	
AREA = 2.5 acres	
Tc = 15 min	
C <sub>1</sub> = 0.64	C <sub>2</sub> = 6.1 cfs
C <sub>3</sub> = 0.68	C <sub>4</sub> = 7.8 cfs
C <sub>5</sub> = 0.83	C <sub>6</sub> = 10 cfs
C <sub>100</sub> = 0.83	C <sub>100</sub> = 15 cfs



Concrete Channel/Flume  
 (Modular Drainage 'Concrete Block System' recommended, Installed at 0.3% Slope)

NOTE: No FEMA SFHA exists on this property as of March 05 2007.



5 MARCH 2007  
 Baughman Company, P.A.  
 1118 E. WILSON ST. WICHITA, KS 67202  
 Baughman  
 ENGINEERING & ARCHITECTURE  
 1118 E. WILSON ST. WICHITA, KS 67202  
 WWW.BAUGHMANCOMPANY.COM