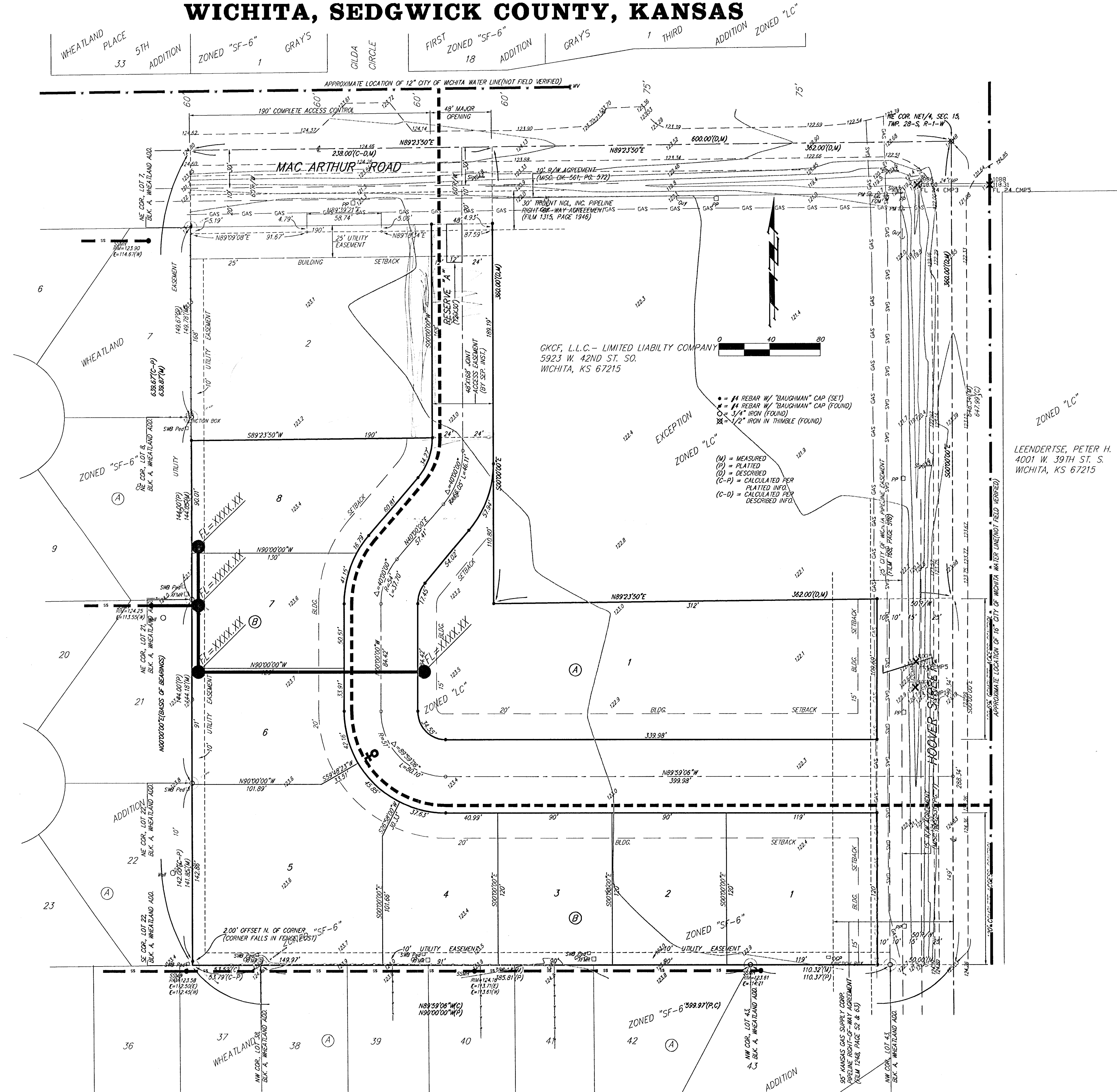


UTILITY PLAN

GRAY'S 6TH ADDITION

WICHITA, SEDGWICK COUNTY, KANSAS



LEGEND

- Proposed Water Line
(8" Unless Noted Otherwise)
- Existing Water Line
(8" Unless Noted Otherwise)
- Proposed Sanitary Sewer Line
(8" Unless Noted Otherwise)
- Existing Sanitary Sewer Line
(8" Unless Noted Otherwise)
- Proposed Sanitary Sewer Manhole
- Proposed Fire Hydrant
- XXXX.XX Proposed Sanitary Sewer Flow