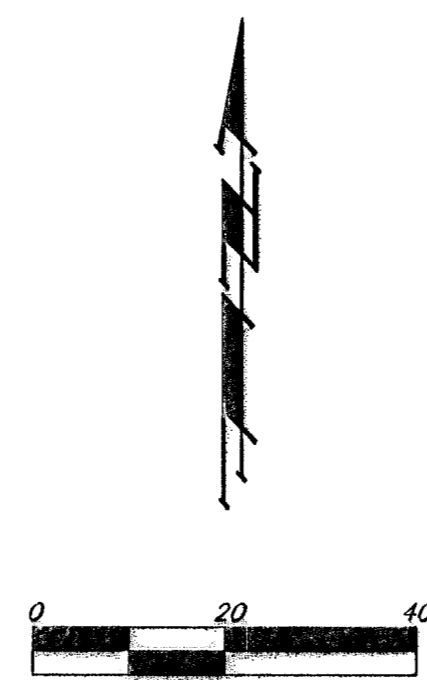
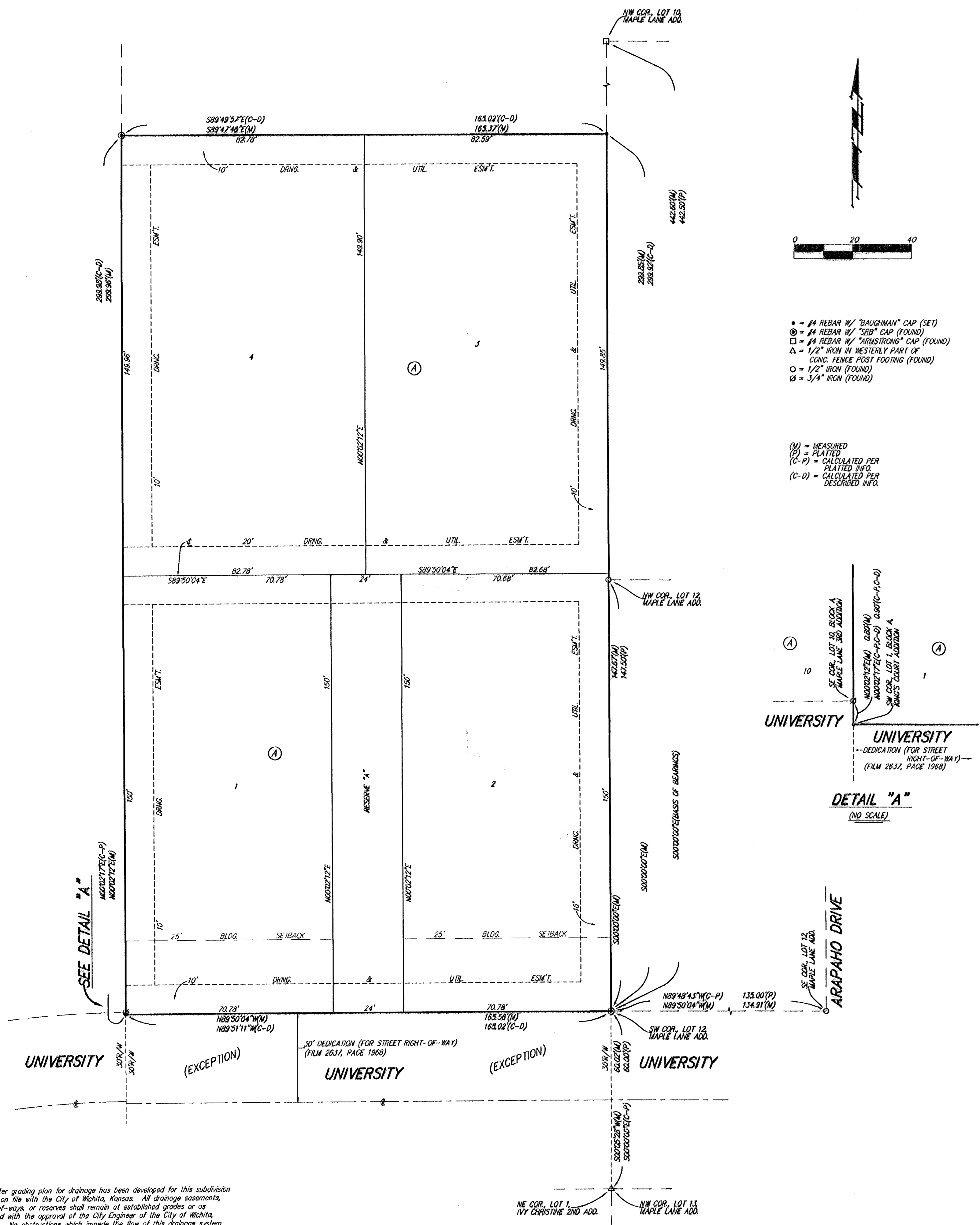
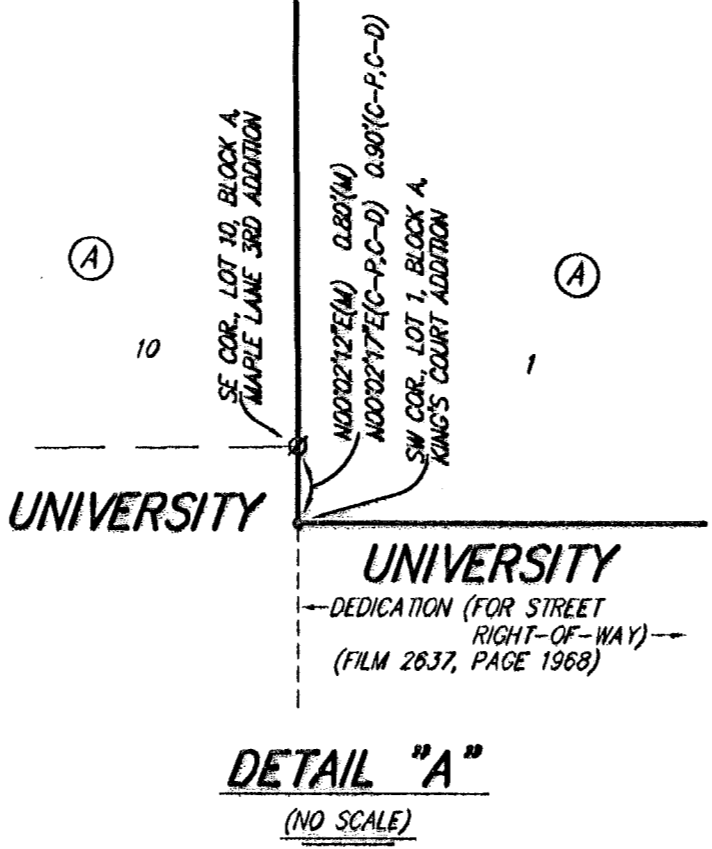


KING'S COURT ADDITION WICHITA, SEDGWICK COUNTY, KANSAS



- = #4 REBAR W/ "BAUGHMAN" CAP (SET)
 - ⊙ = #4 REBAR W/ "SRP" CAP (FOUND)
 - = #4 REBAR W/ "ARMSTRONGS" CAP (FOUND)
 - △ = 1/2" IRON IN WESTERN PART OF CONC. FENCE POST FOOTING (FOUND)
 - = 1/2" IRON (FOUND)
 - ⊗ = 3/4" IRON (FOUND)
- (M) = MEASURED
 (P) = PLATTED
 (C-P) = CALCULATED PER PLATTED INFO.
 (C-D) = CALCULATED PER DESCRIBED INFO.



State of Kansas) SS We, Baughman Company, P.A., Surveyors in
 Sedgwick County) aforesaid county and state do hereby certify that we have surveyed and
 platted "KING'S COURT ADDITION", Wichita, Sedgwick County, Kansas and
 that the accompanying plat is a true and correct exhibit of the property
 surveyed, described as the S1/2 of the N1/2 of the east 5 acres of the
 west 15 acres of the N1/2 of the NE1/4 of Sec. 27, Twp. 27-S, R-1-W
 of the 6th P.M., Sedgwick County, Kansas, EXCEPT the south 30 feet
 thereof dedicated for street purposes.
 Existing public easements and dedications
 being vacated by virtue of K.S.A. 12-512(b).
 Baughman Company, P.A.

Michael G. Conroy, Surveyor
 Michael G. Conroy

This plat of "KING'S COURT ADDITION",
 Wichita, Sedgwick County, Kansas has been submitted to and approved by
 the Wichita-Sedgwick County Metropolitan Area Planning Commission,
 Wichita, Kansas.
 Dated this _____ day of _____, 2007.
 Wichita-Sedgwick County Metropolitan Area Planning Commission

_____, Chair
 Darrell A. Downing
 _____, Secretary
 John L. Schlegel

This plat approved and all dedications
 shown hereon accepted by the City Council of the City of Wichita,
 Kansas, this _____ day of _____, 2007.
 _____, Mayor
 Carl Brewer
 _____, City Clerk
 Karen Sublett

Know all men by these presents that we, the
 undersigned, have caused the land in the surveyors certificate to be platted
 into Lots, a Block, and a Reserve, to be known as "KING'S COURT
 ADDITION", Wichita, Sedgwick County, Kansas. The drainage easements are
 hereby granted as indicated for drainage purposes. The drainage and utility
 easements are hereby granted as indicated for drainage purposes and for
 the construction and maintenance of all public utilities. Reserve "A" is
 hereby reserved for a private drive, drainage purposes, and utilities. Reserve
 "A" shall be owned and maintained by the owners of Lots 3 and 4, Block A.

D & M Enterprises of Wichita, LLC
 a Kansas limited liability company
 Don Klausmeyer, Member
 Don Klausmeyer

Reviewed in accordance with K.S.A. 58-2005
 on this _____ day of _____, 2007.

Tricia L. Robello, L.S. #1246
 Deputy County Surveyor
 Sedgwick County, Kansas

Entered on transfer record this _____ day
 of _____, 2007.
 _____, County Clerk
 Don Brace

State of Kansas) SS This is to certify that this plat has been
 Sedgwick County) filed for record in the office of the Register of Deeds, this _____ day
 of _____, 2007 at _____ o'clock _____ M. and is duly recorded.

_____, Register of Deeds
 Bill Meek
 _____, Deputy
 Tonya Buckingham

State of Kansas) SS The foregoing instrument acknowledged before
 Sedgwick County) me, this _____ day of _____, 2007, by Don Klausmeyer, Member
 of D & M Enterprises of Wichita, LLC, a Kansas limited liability company,
 on behalf of the limited liability company.

JUDITH M. TERHUNE
 Notary Public - State of Kansas
 My Appl. Expires 11-7-09
 Judith M. Terhune, Notary Public
 JUDITH M. TERHUNE
 My App't. Exp. 11-7-09

NOTE:
 A master grading plan for drainage has been developed for this subdivision
 and is on file with the City of Wichita, Kansas. All drainage easements,
 right-of-ways, or reserves shall remain at established grades or as
 modified with the approval of the City Engineer of the City of Wichita,
 Kansas. No obstructions which impede the flow of this drainage system
 shall be allowed.