

PRELIMINARY PLAT KING'S COURT ADDITION

WICHITA, SEDGWICK COUNTY, KANSAS

The S1/2 of the N1/2 of the east 5 Acres of the West 15 Acres of the NW1/4 of the NE1/4 of Sec. 27, Twp. 27-S, R-1-W of the 6th P.M., Sedgwick County, Kansas.

MAX E. KING
IRENE S. KING
BOX 301
HAVEN, KS 67543

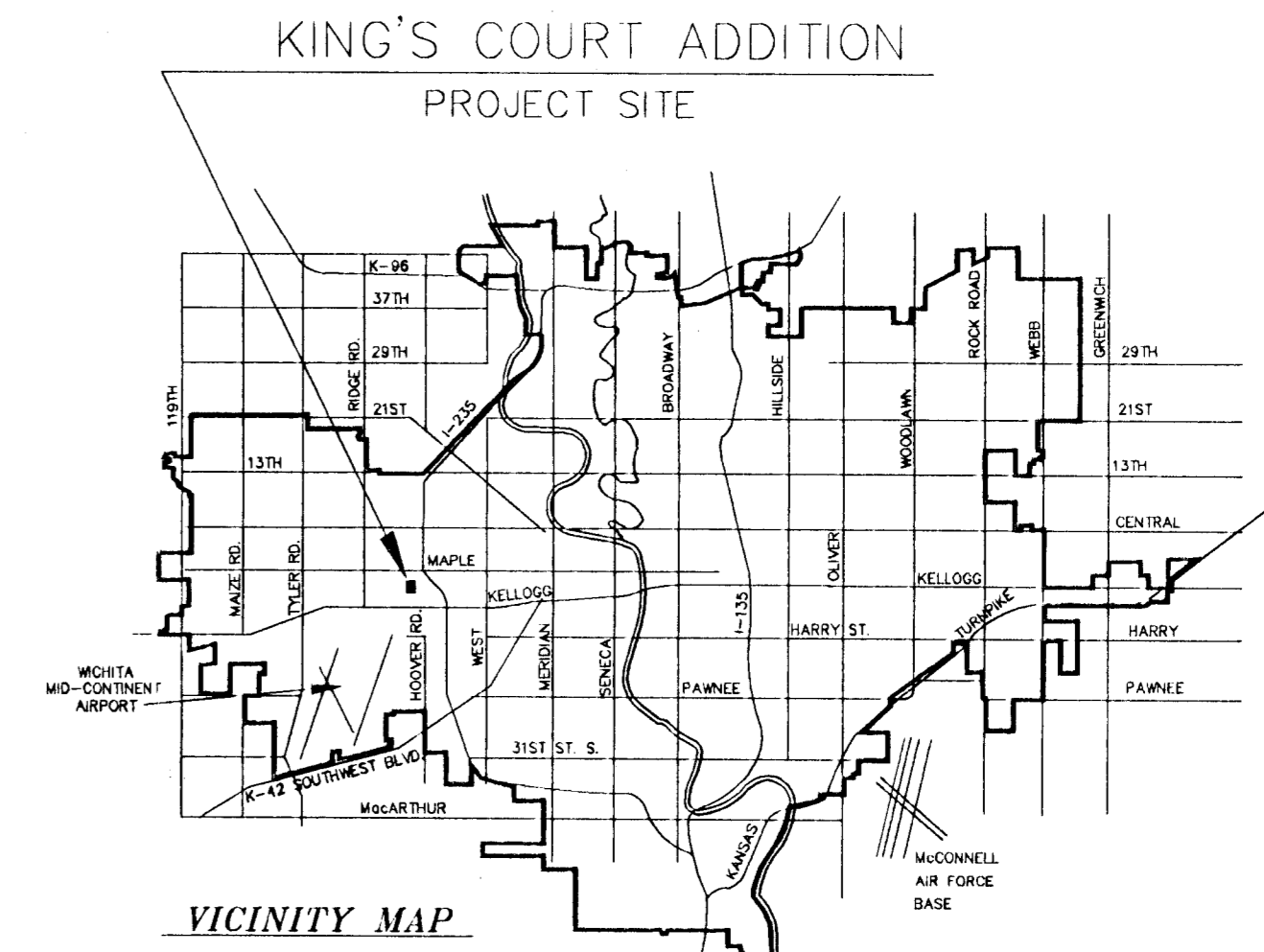
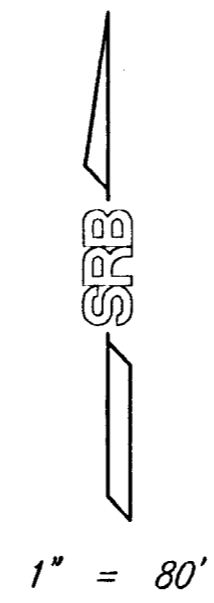
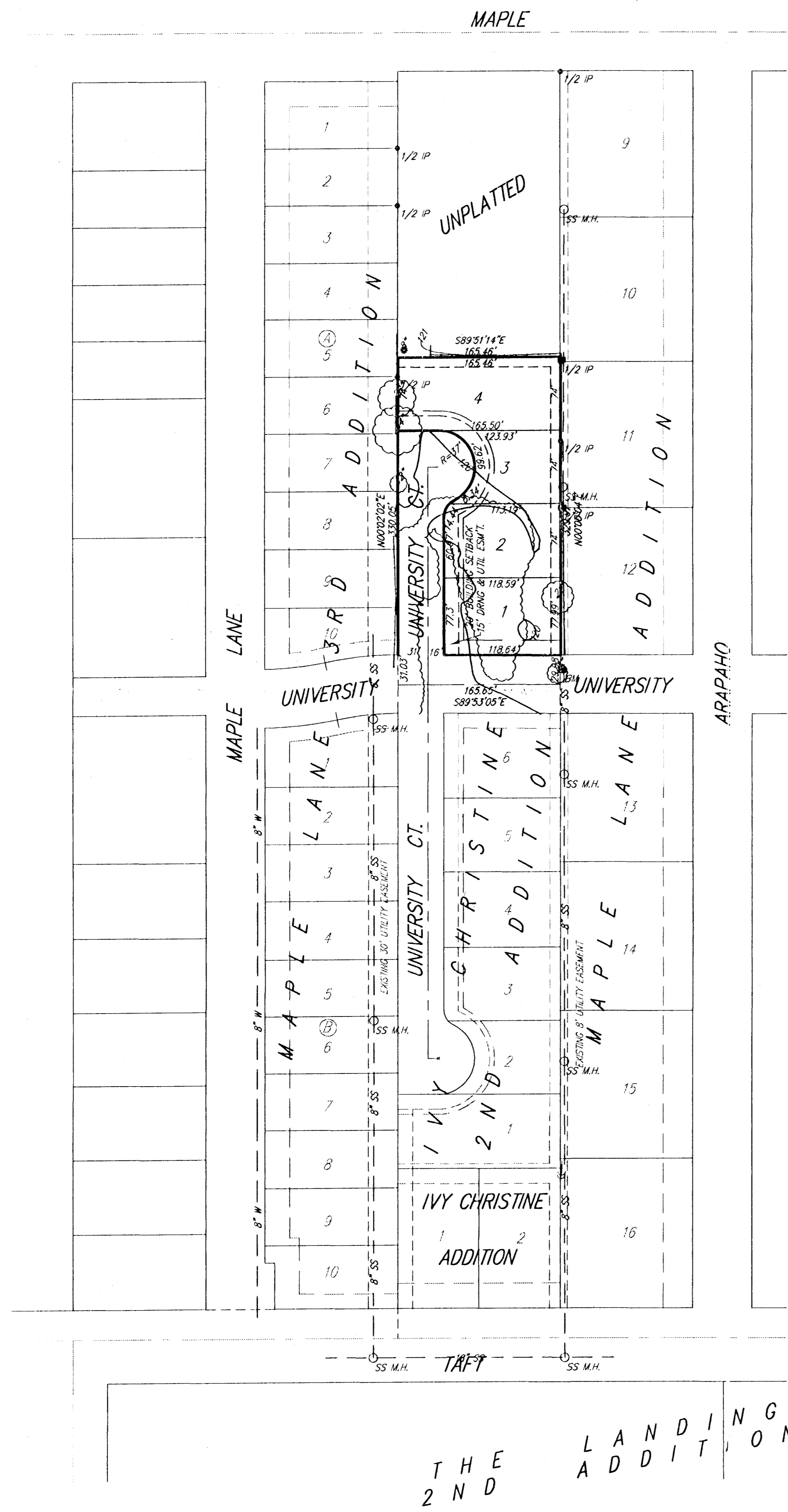
PH 465-2445

GROSS SIZE
54,635.30 Sq. Ft.±
1.25 Acres±

NET SIZE
37,225.93 Sq. Ft.±
0.85 Acres±

MINIMUM LOT SIZE
7,018.79 Sq. Ft.

BENCH MARK:
RAILROAD SPIKE IN POWER POLE
15.8' S. OF S.W. COR. LOT 12, MAPLE LANE ADD.
ELEV. = 121.85 (CITY OF WICHITA DATUM)



SRB 924 NORTH MAIN 316-264-8008
WICHITA, KANSAS 67203 FAX 264-4621
SAVOY, RUGGLES & BOHM, P. A.
ENGINEERING & SURVEYING

DWG FILE 01111P-R.C.
PROJECT NO. 9801111P

23 NOV 98