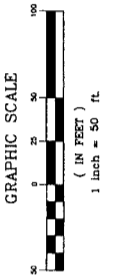
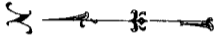
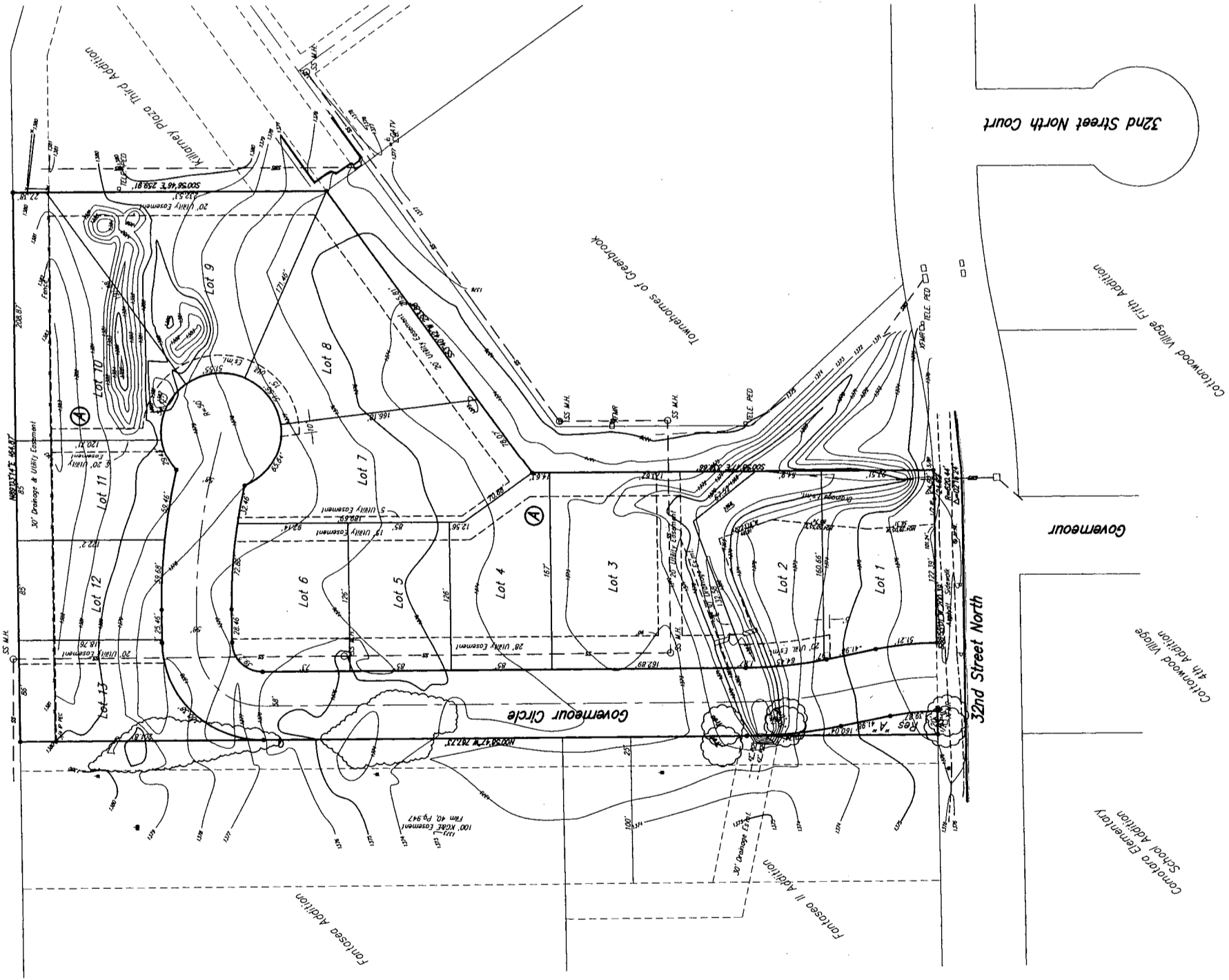


Northeast Expressway
K-96 Highway



Bench Mark: City of Wichita Site Data
6.5 W. of N. Corner
Elevation = 1372.30 M.G.V.D.

- LEGEND
- = WATER MAIN
 - = WATER MAIN
 - SS = SANITARY SEWER
 - UZE = UNDER GROUND ELECTRIC
 - UGT = UNDER GROUND TELEPHONE
 - B.M. = BENCH MARK
 - TELE. ROD
 - TELEPHONE FEDESTAL
 - HIGH LINE POLE
 - ▲ POWER POLE
 - 4 = SPOY
 - ELEC. TRANSFORMER
 - SS M.H. = SANITARY SEWER MANHOLE

Preliminary Plat KILLARNEY PLAZA EAST

An Addition Wichita, Sedgwick County, Kansas

Legal Description:
All of land in Lot 1, Block 1, Killarney Plaza Third Addition, an addition to Wichita, Sedgwick County, Kansas, EXCEPT that part described as follows:
Beginning at the S.E. Corner of said Lot 1; thence S89°04'12"W, 362.00 feet along the south line of said Lot 1; thence N00°55'48"W, 225.00 feet; thence S89°04'12"W, 110.00 feet; thence N36°19'18"W, 307.83 feet; thence N00°56'46"W, 259.90 feet to a point on the north line of said Lot 1; thence N89°03'14"E, 118.17 feet; thence S75°12'39"E, 184.37 feet along said north line; thence N89°03'14"E, 354.72 feet continuing along said north line to the N.E. Corner of said Lot 1; thence S00°55'48"E, 686.04 feet along the east line to the point of beginning.

OWNER:
Delbry Development, LLC
Michael Drumright
2605 N. Hillcrest
Wichita, Kansas 67220
Ph. 689-8438

GROSS AREA:
255,395.91 Sq. Ft. ±
5.86 Acres ±

NET AREA:
197,527.21 Sq. Ft. ±
4.54 Acres ±

MINIMUM LOT SIZE:
5906.42 Sq. Ft. ±
0.23 Acres ±

EXISTING ZONING: MF-18 Multi Family
CONTROL NO. 194830

Savoy Company, P.A.
Land Surveyors
535 S. Emporia, Suite 104, Wichita, KS 67202
PH (316) 265-4008
FAX (316) 265-4279
www.savoyco.com



PROJECT NO. 0403066 P

30 OCT 14