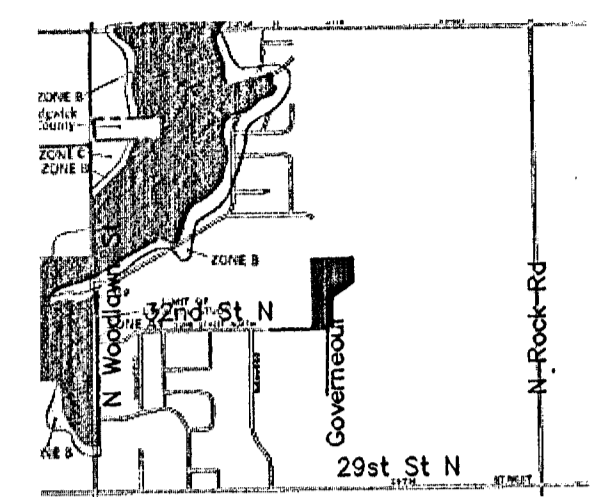


DRAINAGE PLAN OF "KILLARNEY PLAZA EAST ADDITION" WICHITA, SEDGWICK COUNTY, KANSAS IN NORTHWEST QUATER OF THE SOUTHEAST QUARTER OF SECTION 31, TOWNSHIP 26 SOUTH, RANGE 2 EAST, OF THE 6TH P.M.

FLOOD ZONE MAP

Sec. 31, T26S, R2E

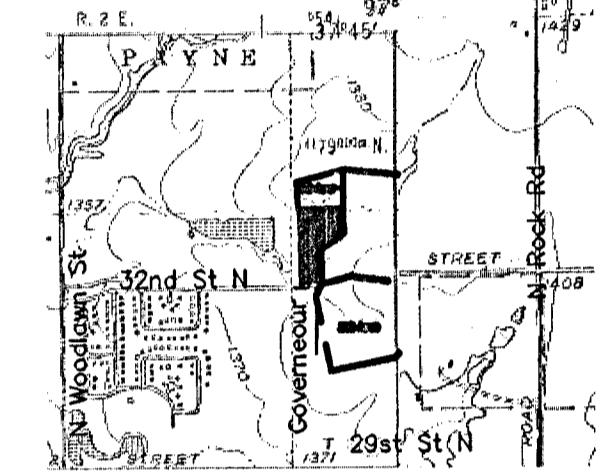


SCALE: 1" = 2,000'

FLOOD ZONE:
Subject property is in Zone C, as shown of Federal Emergency Management Agency (FEMA) Flood Insurance Rate Map (FIRM) for City of Wichita, Sedgwick County, KS, Panel Number 200328 0015B, effective May 15, 1986.

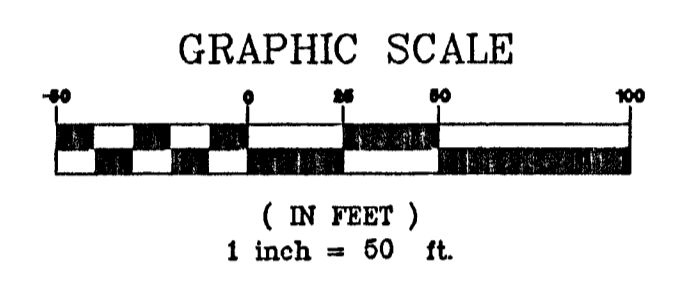
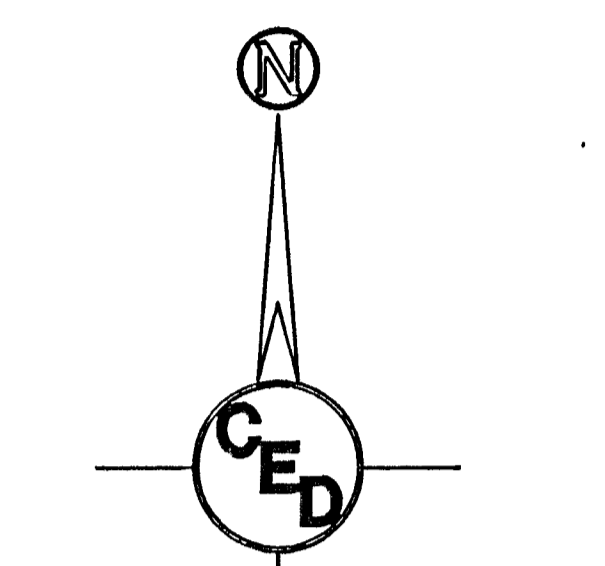
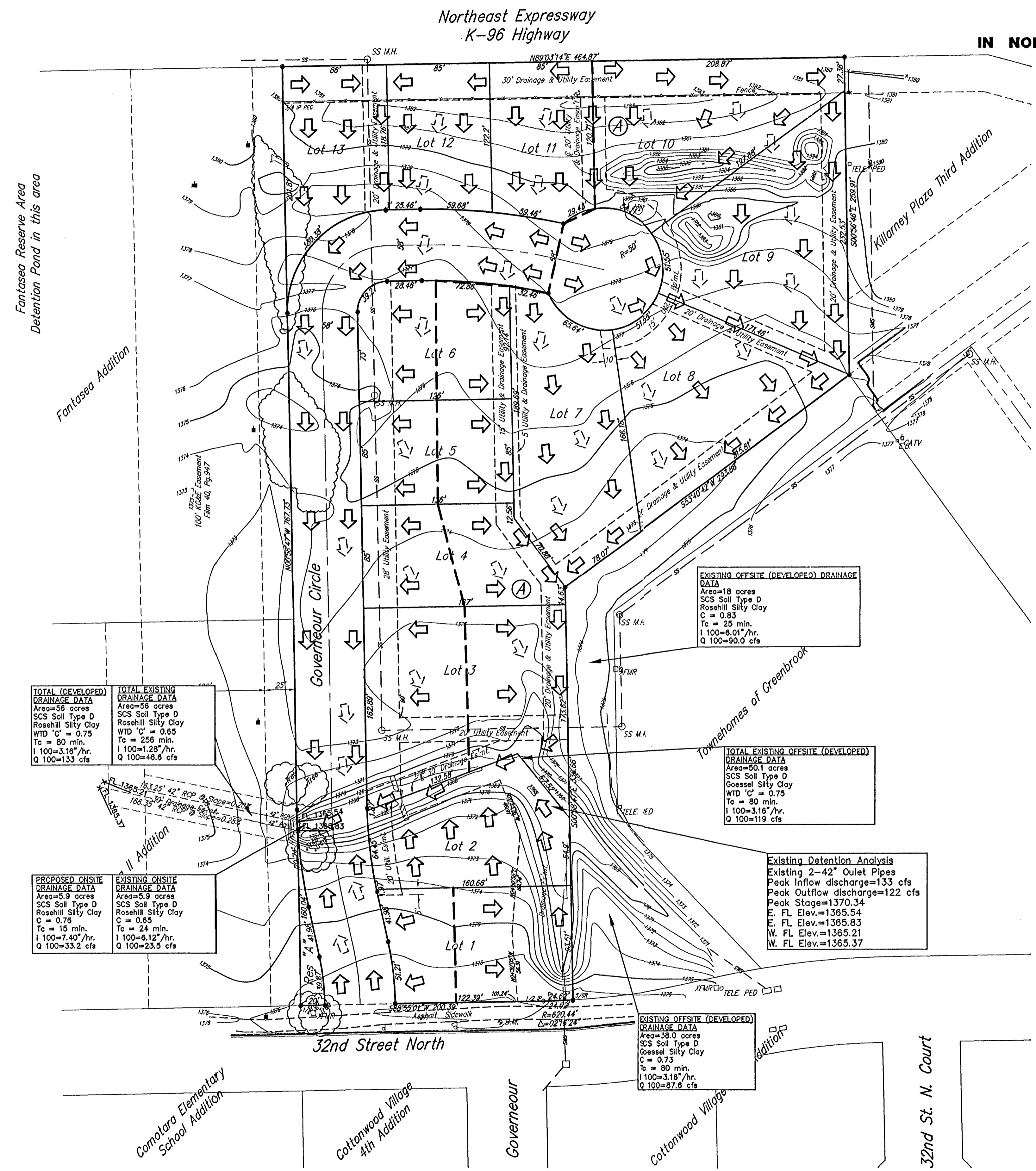
QUADRANGLE MAP

Sec. 31, T26S, R2E

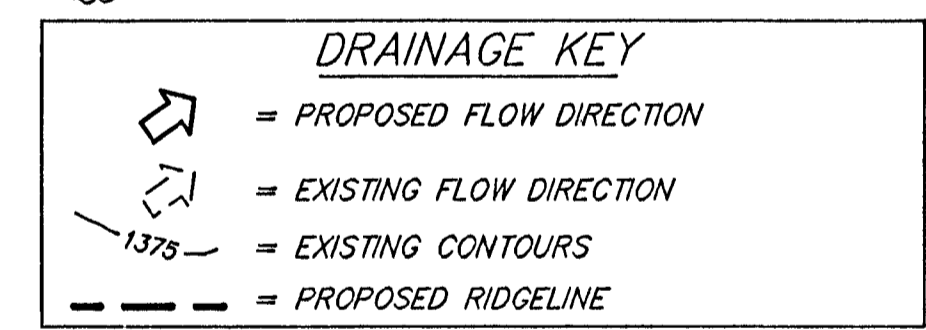


WICHITA EAST & ANDOVER QUADRANGLE
7.5 Minute Series
SCALE: 1" = 2,000'

LOT	BLOCK	ELEVATION
1	A	1372
2	A	1372
3	A	1372
4	A	1372
5	A	1372
6	A	1372
7	A	1372
8	A	1372
9	A	1372
10	A	1372
11	A	1372
12	A	1372
13	A	1372



- LEGEND**
- G = GAS MAIN
 - W = WATER MAIN
 - SS = SANITARY SEWER
 - SWS = STORM WATER SEWER
 - UGE = UNDER GROUND ELECTRIC
 - UGT = UNDER GROUND TELEPHONE
 - B.M. = BENCH MARK
 - TELE. PED. = TELEPHONE PEDESTAL
 - HL = HIGH LINE POLE
 - PP = POWER POLE
 - SIGN = SIGN
 - XTMR = ELECTRIC TRANSFORMER
 - SS M.H. = SANITARY SEWER MANHOLE
 - TREE = TREE
 - SHRUB = SHRUB



TOTAL (DEVELOPED) DRAINAGE DATA
Area=58 acres
SCS Soil Type D
Rosehill Silty Clay
WD 'C' = 0.75
Tc = 80 min.
I 100=3.16"/hr.
Q 100=133 cfs

PROPOSED ONSITE DRAINAGE DATA
Area=5.9 acres
SCS Soil Type D
Rosehill Silty Clay
C = 0.75
Tc = 15 min.
I 100=7.40"/hr.
Q 100=33.2 cfs

EXISTING OFFSITE (DEVELOPED) DRAINAGE DATA
Area=18 acres
SCS Soil Type D
Rosehill Silty Clay
C = 0.83
Tc = 25 min.
I 100=6.01"/hr.
Q 100=90.0 cfs

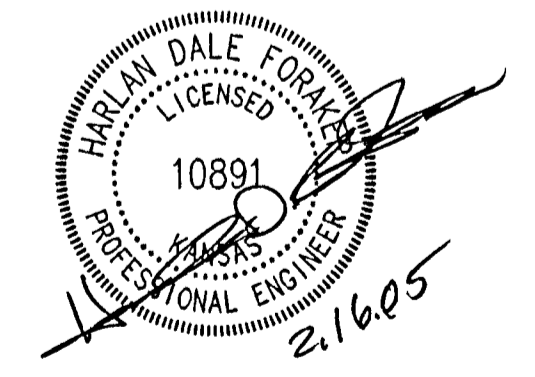
TOTAL EXISTING OFFSITE (DEVELOPED) DRAINAGE DATA
Area=50.1 acres
SCS Soil Type D
Goessel Silty Clay
WD 'C' = 0.75
Tc = 80 min.
I 100=3.16"/hr.
Q 100=119 cfs

Existing Detention Analysis
Existing 2-42" Outlet Pipes
Peak Inflow discharge=133 cfs
Peak Outflow discharge=122 cfs
Peak Stage=1370.34
E. FL Elev.=1365.54
W. FL Elev.=1365.83
W. FL Elev.=1365.21
W. FL Elev.=1365.37

EXISTING OFFSITE (DEVELOPED) DRAINAGE DATA
Area=38.0 acres
SCS Soil Type D
Goessel Silty Clay
C = 0.73
Tc = 80 min.
I 100=3.16"/hr.
Q 100=87.6 cfs

SURVEY DISCLAIMER:
TOPOGRAPHIC SURVEY AND CONTOUR MAP USED IN PREPARING PLANS WAS PROVIDED BY SAVOY COMPANY, P.A., 535 S. EMPORIA, SUITE 104, WICHITA, KS. ENGINEER DOES NOT GUARANTEE SURVEY ELEVATIONS FOR ACCURACY. CONTRACTOR SHALL VERIFY ELEVATIONS AND NOTIFY ENGINEER OF ANY DISCREPANCIES.

OWNER:
Delbry Development, LLC
Michael Drumright
2605 N. Hillcrest
Wichita, Kansas 67220
Ph. 689-8438



Savoy Company, P.A.
Land Surveyors
535 S. Emporia, Suite 104, Wichita, KS 67202
PH (316) 265-0005
FAX (316) 265-0275
www.savoyco.com

Bench Mark: City of Wichita Std. Disc
Gouverneur & 32nd Street N.
6 ± N. of N. Curb
Elevation = 1377.30 N.G.V.D.

DRAINAGE PLAN FOR
KILLARNEY PLAZA EAST ADD.
WICHITA, SEDGWICK COUNTY, KANSAS
PROJ. NO.: 20041204

CERTIFIED ENGINEERING DESIGN, P.A.
810 WEST DOUGLAS, SUITE C
WICHITA, KANSAS 67203
PH.(316)262-8808 FAX.(316)262-1669

DESIGNED: HDF	SCALE: 1"=50'	SHEET 1
DRAWN: CKW	DATE: 11/18/04	
CHECKED: HDF	CED FILE: Killarney_DP1.DWG	TOTAL 1