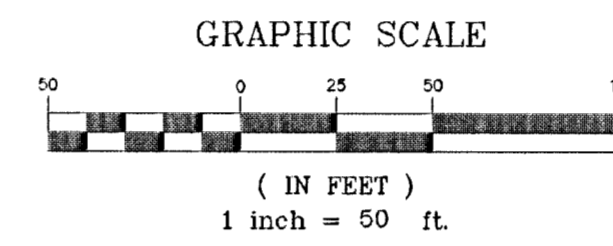
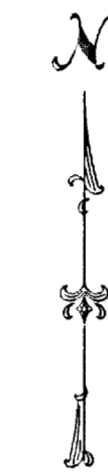


Preliminary Plat KOCH OFFICE PARK 4TH ADDITION

Wichita, Sedgwick County, Kansas

Legal Description:

That part of the SE1/4 of Sec. 27, Twp. 26-S, R-1-E of the 6th P.M., Sedgwick County, Kansas described as beginning at the S.E. Corner of said SE1/4; thence west, along the south line of said SE1/4, 622.285 feet; thence north, parallel with the east line of said SE1/4, 700 feet; thence east, parallel with the south line of said SE1/4, 622.285 feet to the east line of said SE1/4; thence south, along the east line of said SE1/4, 700 feet to the place of beginning, subject to easements of record.



Minimum Pad Elevation for Lowest Opening	
Lot 1	1367.5 NGVD29
Lot 2	1347 NGVD29
Lot 3	1347 NGVD29

Elevations = NGVD 1929

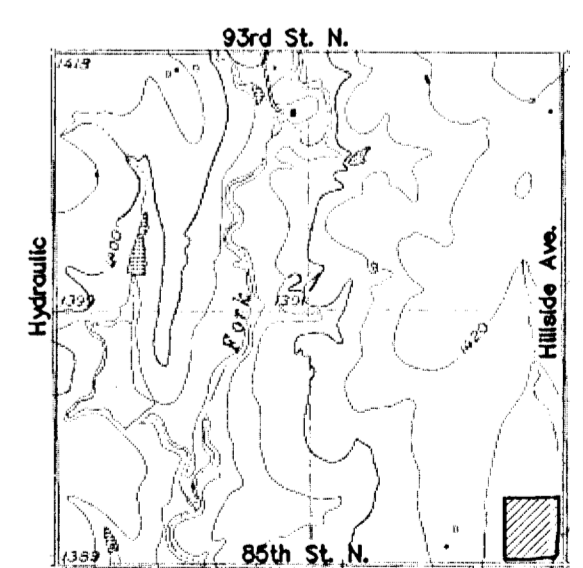
Bench Mark: City of Wichita Std Disc
S.E. Corner of Intersection of
Hillside and 37th Street No.
40.10' South of Centerline 37th St No.
80.50' East of Centerline Hillside Avenue
Elevation = 1352.75 NGVD

LEGEND

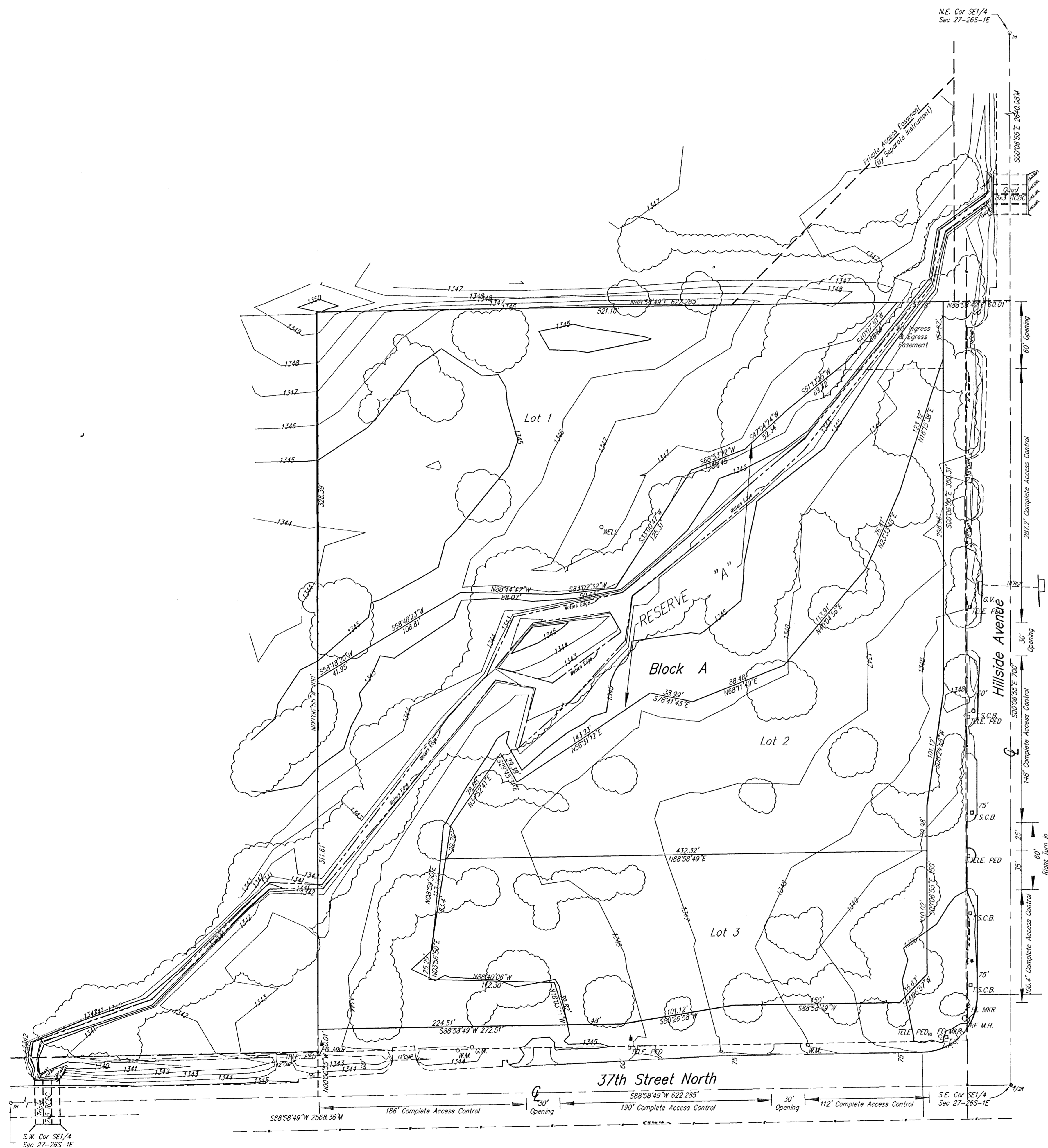
- G = GAS MAIN
- W = WATER MAIN
- SS = SANITARY SEWER
- SWS = STORM WATER SEWER
- UCE = UNDER GROUND ELECTRIC
- UGT = UNDER GROUND TELEPHONE
- BM BENCH MARK
- TELE. PED TELEPHONE PEDESTAL
- FO MKR FIBER OPTIC MARKER
- GA GUY ANCHOR
- G.M. GAS METER
- G.P. GUY POLE
- G.V. GAS VALVE
- L.P. LIGHT POLE
- PL MKR PIPELINE MARKER
- P POST
- PP POWER POLE
- S SIGN
- T.S. TRAFFIC SIGNAL
- T.S.C.B. TRAFFIC SIGNAL CONTROL BOX
- WELL WATER WELL
- W.M. WATER METER
- TRF. M.H. TRAFFIC MANHOLE

QUADRANGLE MAP

Sec. 27, T26S, R1E



SCALE: 1" = 2,000'
VALLEY CENTER QUADRANGLE



OWNER:
KOCH REAL ESTATE HOLDINGS INC
Koch Industries, Inc.
4111 E. 37th St. N.
Ph: 828-5500

GROSS SIZE
4,356,572.29 Sq. Ft.
10.00 Acres±

NET SIZE OF PLAT
3,526,265.51 Sq. Ft.
8.10 Acres±

MINIMUM LOT SIZE
3,526,265.51 Sq. Ft.
8.10 Acres±

ZONING
LC - Limited Commercial

CONTROL NUMBER
498902



Savoy Company, P.A.
Land Surveyors

PH (316) 265-0005
FAX (316) 265-0275

PROJECT NO. 06CC06198 P

535 S. Emporia, Suite 104, Wichita, KS 67202

www.savoyco.com

30 MAY 06