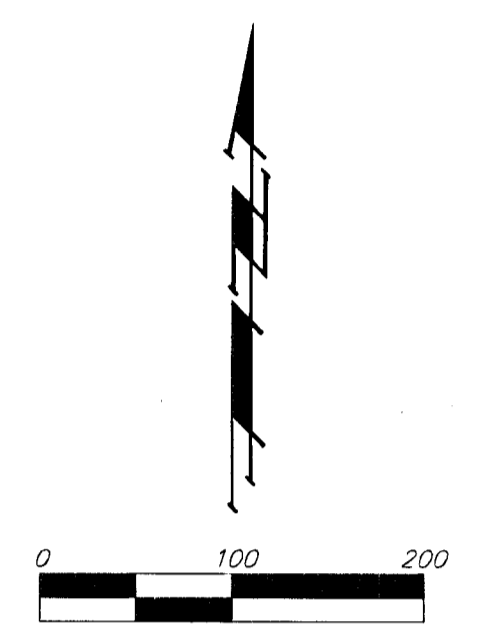
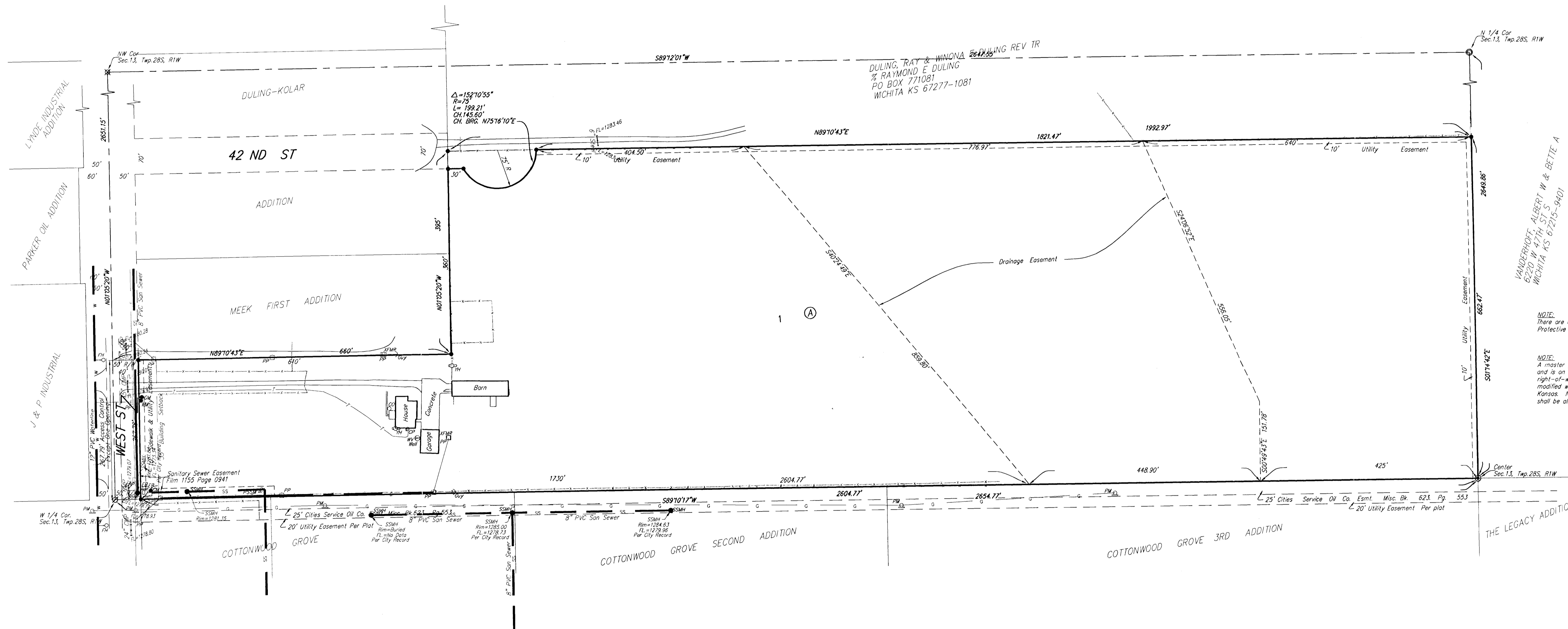


UTILITY PLAN LANGE ADDITION WICHITA, SEDGWICK COUNTY, KANSAS



- = #4 REBAR W/ "BAUGHMAN" CAP (SET)
- ⊙ = #4 REBAR W/ "MKEC" CAP (FOUND)
- ⊗ = 1-1/4" IRON IN THUMB (FOUND)
- ⊕ = 1/2" IRON (FOUND)
- ⊖ = #5 REBAR (FOUND)

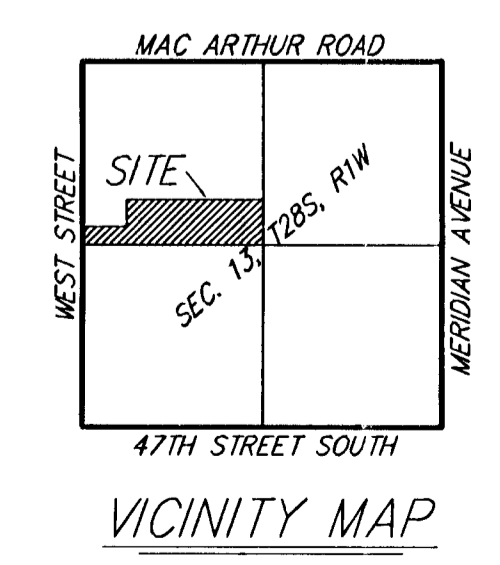
BENCHMARK:
 COW Benchmark, Disc. NW corner Lift Station
 53' NE of W 1/4 Cor. Sec. 13 Twp. 28S. R1W
 Elevation = 1282.52 NAVD88

NOTE:
 There are additional building setbacks along the south property line, per Protective Overlay #198.

NOTE:
 A master grading plan for drainage has been developed for this subdivision and is on file with the City of Wichita, Kansas. All drainage easements, right-of-ways, or reserves shall remain at established grades or as modified with the approval of the City Engineer of the City of Wichita, Kansas. No obstructions which impede the flow of this drainage system shall be allowed.

MINIMUM BUILDING PAD ELEVATIONS FOR LOWEST OPENING TO THE STRUCTURES		
LOT	BLOCK	ELEVATION MSE
1	A	1284.7

- LEGEND**
- Proposed Water Line (8" Unless Noted Otherwise)
 - - - Existing Water Line (8" Unless Noted Otherwise)
 - Proposed Sanitary Sewer Line (8" Unless Noted Otherwise)
 - - - Existing Sanitary Sewer Line (8" Unless Noted Otherwise)
 - Proposed Sanitary Sewer Manhole
 - ♀ Proposed Fire Hydrant
 - FL=XXXX.XX Proposed Sanitary Sewer Flow



LANGE ADDITION 14 JANUARY, 2008

Baughman Company, P.A.
 315 Ella St. Wichita, KS 67211 P 316-262-7271 F 316-262-0149
 ENGINEERING | SURVEYING | PLANNING | LANDSCAPE ARCHITECTURE

E:\PLAT\LANGE\dwg\LANGE_E.dwg:08D