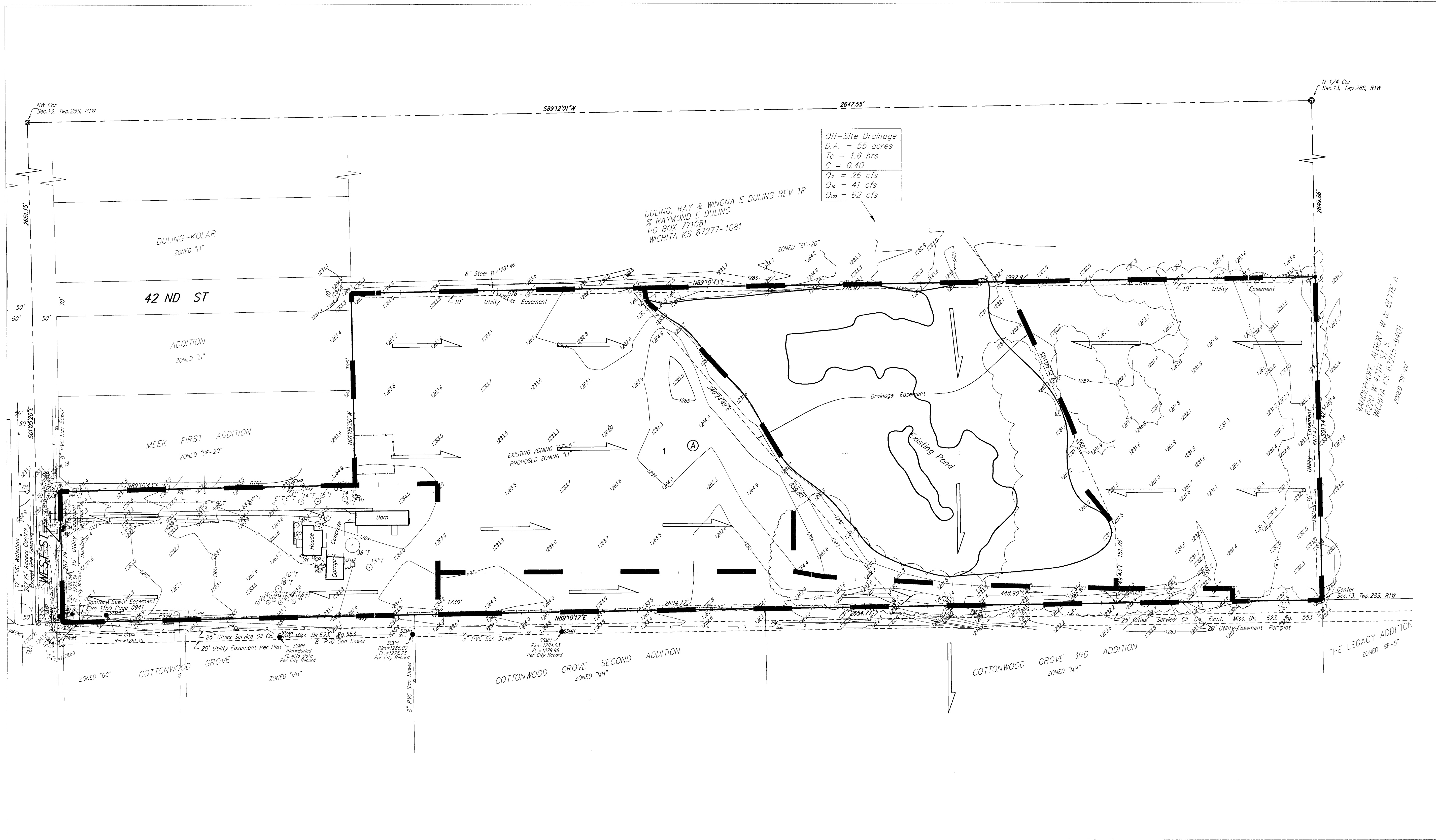
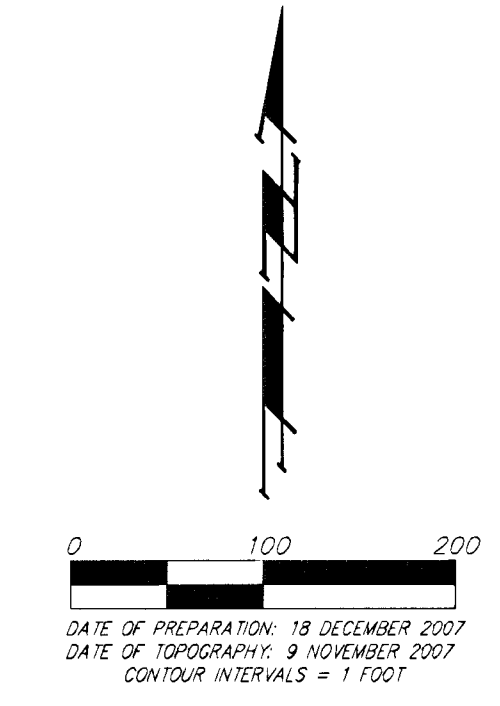


DRAINAGE CONCEPT
LANGE ADDITION
 WICHITA, SEDGWICK COUNTY, KANSAS



Off-Site Drainage
 D.A. = 55 acres
 Tc = 1.6 hrs
 C = 0.40
 Q_r = 26 cfs
 Q₁₀ = 41 cfs
 Q₁₀₀ = 62 cfs

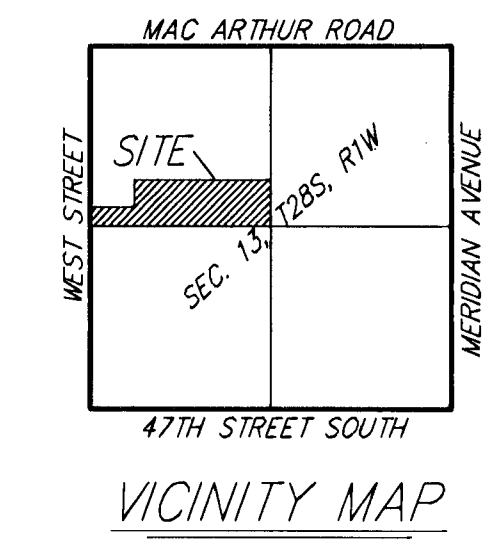


DATE OF PREPARATION: 18 DECEMBER 2007
 DATE OF TOPOGRAPHY: 9 NOVEMBER 2007
 CONTOUR INTERVALS = 1 FOOT

OWNER:
 JBL, Inc.
 Attn: Jeff Lange
 4911 S. Meridian
 Wichita, Kansas 67217
 Phone 529-3100

LEGAL DESCRIPTION:
 The S 1/4 of the S 1/4 of the NW 1/4 of Sec. 13, Twp. 28-S, R-1-W of the 6th P.M., Sedgwick County, Kansas, EXCEPT the north 335 feet of the west 660.00 feet thereof, and EXCEPT the west 40 feet for roadway.

BENCHMARK:
 COW Benchmark, Disc. NW corner Lift Station
 53' NE of W 1/4 Cor. Sec. 13 Twp. 28S, R1W
 Elevation = 1282.52 NGVD88



NOTE: Site currently located in FEMA Zone X per FEMA FIRM Panel 485 of 700, for Sedgwick County, Kansas. Map number 20173CO485E, Effective February 2, 2007.

DRAINAGE CONCEPT
LANGE ADDITION
 18 DECEMBER 2007

B Baughman Company, P.A.
 315 Ellis St. Wichita, KS 67211 P 316-262-7271 F 316-262-0149
 Baughman ENGINEERING | SURVEYING | PLANNING | LANDSCAPE ARCHITECTURE
 E:\HYDRO\Projects\LANGE\LANGE_Conc.dwg