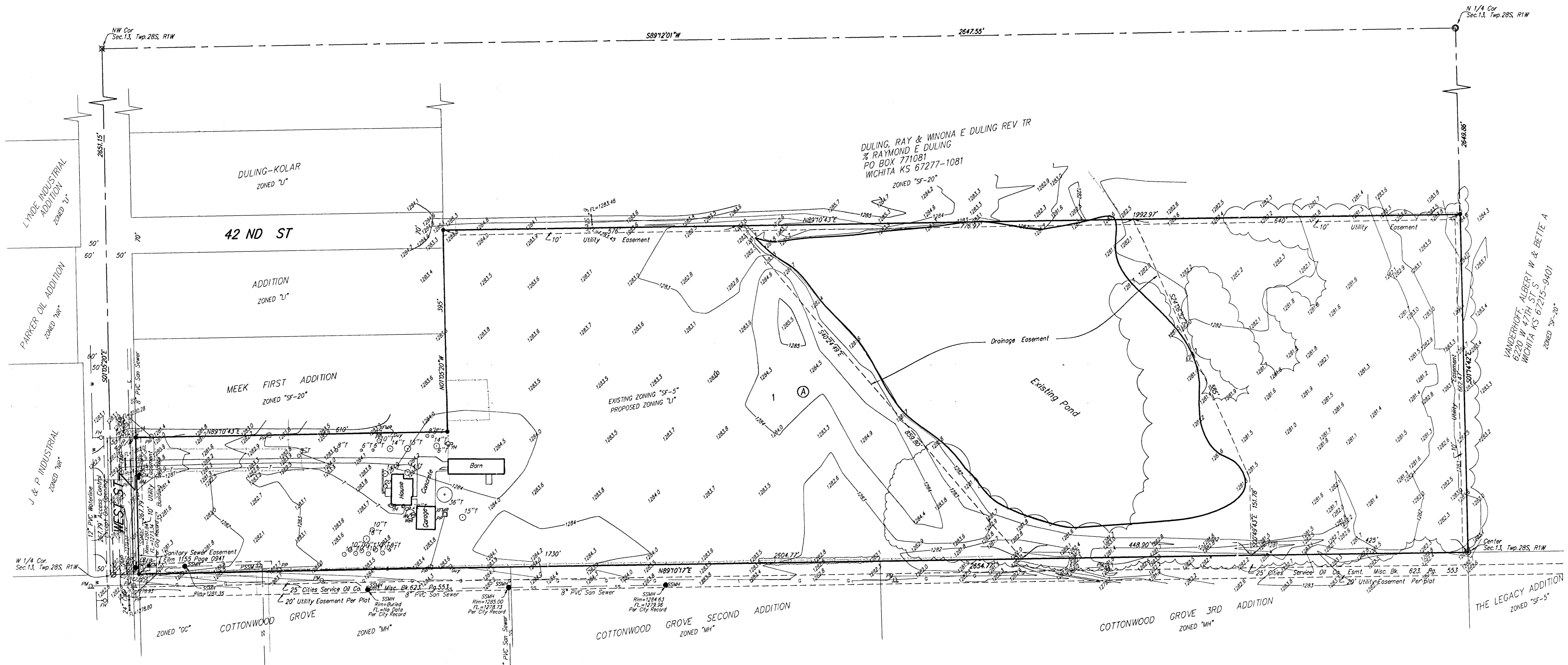


PRELIMINARY PLAT
LANGE ADDITION
 WICHITA, SEDGWICK COUNTY, KANSAS



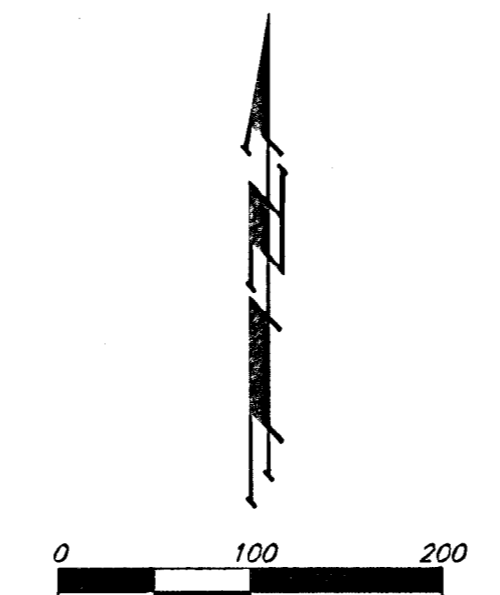
NOTE:
 There are additional building setbacks along the south property line, per Protective Overlay #198.

NOTE:
 A master grading plan for drainage has been developed for this subdivision and is on file with the City of Wichita, Kansas. All drainage easements, right-of-ways, or reserves shall remain at established grades or as modified with the approval of the City Engineer of the City of Wichita, Kansas. No obstructions which impede the flow of this drainage system shall be allowed.

OWNER:
 JBL, Inc.
 Attn: Jeff Lange
 4911 S. Marston
 Wichita, Kansas 67217
 Phone 529-3100

LEGAL DESCRIPTION:
 The S 1/4 of the S 1/4 of the NW 1/4 of Sec. 13, Twp. 28-S, R-1-W of the 6th P.M., Sedgewick County, Kansas; EXCEPT the north 393 feet of the west 660.00 feet thereof, and EXCEPT the west 40 feet for roadway.

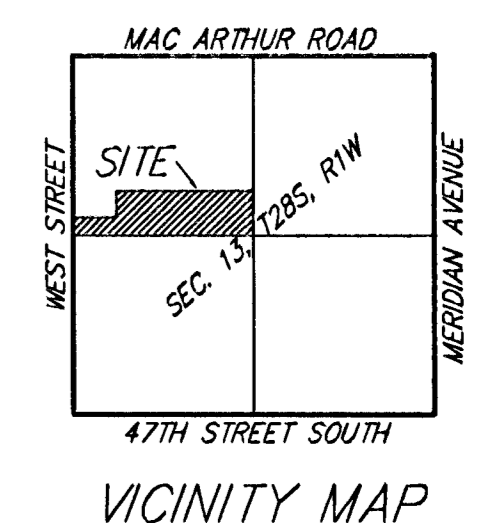
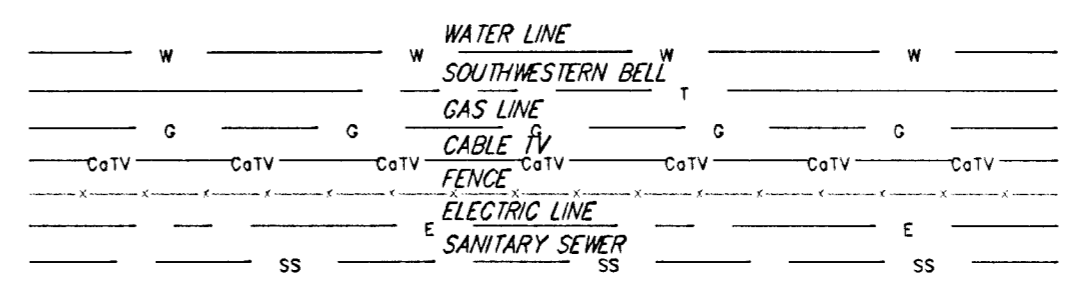
BENCHMARK:
 COW Benchmark, Disc. NW corner Litt Station
 53' NE of W 1/4 Cor Sec 13 Twp 28S R1W
 Elevation = 1282.52 NGVD88



DATE OF PREPARATION: 10 DECEMBER, 2007
 DATE OF TOPOGRAPHY: 9 NOVEMBER, 2007
 CONTOUR INTERVALS = 1'00"

- #1 REBAR W/ "BAUGHMAN" CAP (SET)
- #4 REBAR W/ "TAKES" CAP (FOUND)
- ⊗ 1-1/4" IRON IN THIMBLE (FOUND)
- 1/2" IRON (FOUND)
- ⊗ #5 REBAR (FOUND)

- pp □ = Power Pole
- XTMR □ = Transformer
- EB □ = Electric Box
- CA □ = Day Anchor
- CTV ○ = Cable TV Pedestal
- GM ○ = Gas Meter
- PM ○ = Pipeline Marker
- PSM ○ = Pressurized San Sewer Marker
- SSM ○ = Sanitary Sewer Manhole
- CO ○ = Cleanout
- Wet ○ = Cased Well
- W ● = Water Meter
- WV ● = Water Valve
- YH ○ = Yard Hydrant (Spigot)
- FH ○ = Fire Hydrant
- T ○ = Tree



LANGE ADDITION
 10 DECEMBER, 2007

Baughman Company, P.A.
 315 Ellis St., Wichita, KS 67211 P 316-262-7271 F 316-262-0149

ENGINEERING | SURVEYING | PLANNING | LANDSCAPE ARCHITECTURE

F:\PLAT\LANGE.dwg\LANGE_P.dwg\GED