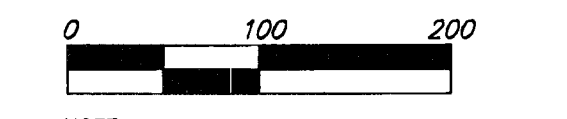
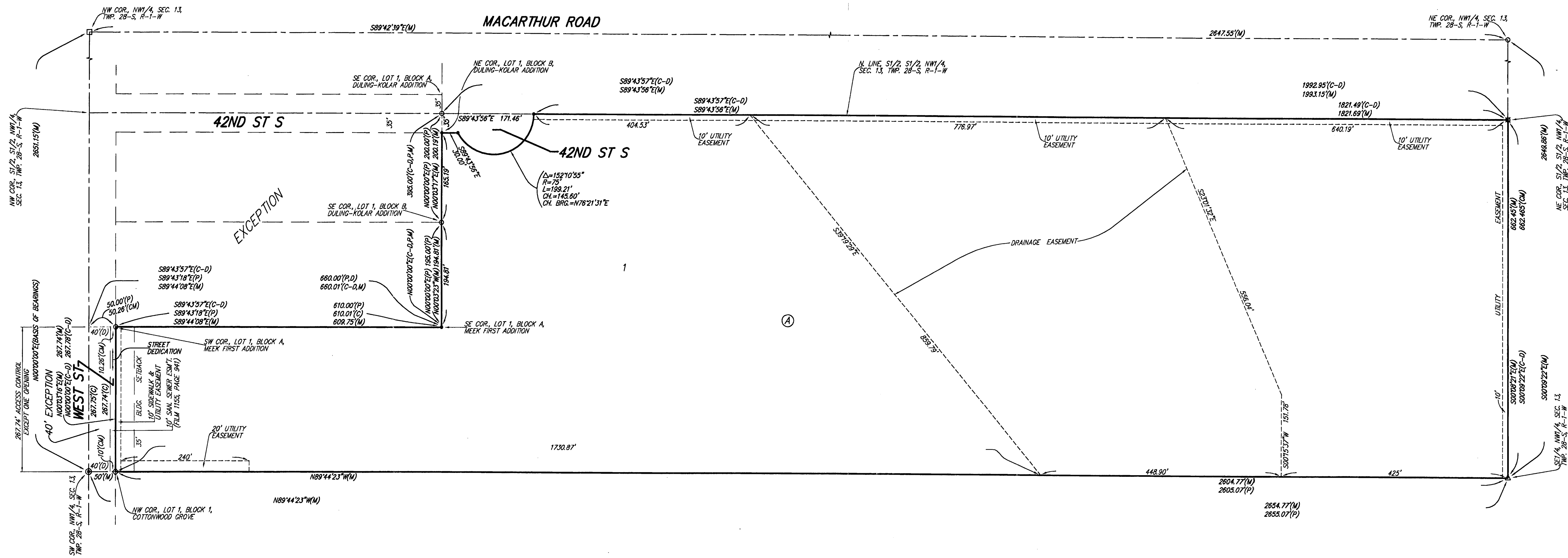


FINAL TRACING RECORD **LANGE ADDITION**
 WICHITA, SEDGWICK COUNTY, KANSAS

4-15-08



NOTE: ADDITIONAL BUILDING SETBACKS ALONG THE SOUTH PROPERTY LINE PER PROTECTIVE OVERLAY #198.

- = #4 REBAR W/ "BAUGHMAN" (SET)
- = 1/2" IRON PIPE (FOUND)
- ⊗ = 3/4" IRON PIPE (FOUND)
- ⊙ = #5 REBAR IN THIMBLE (FOUND)
- = 1-1/4" IRON PIPE IN THIMBLE (FOUND)
- = #5 REBAR (FOUND)
- △ = #4 REBAR W/ "MKEC" CAP OVER STONE (FOUND)

- (M) = MEASURED
- (P) = PLATTED
- (D) = DESCRIBED
- (C) = CALCULATED
- (CM) = CALCULATED PER MEASURED INFO.
- (C-P) = CALCULATED PER PLATTED INFO.

BENCHMARK: CITY OF WICHITA BENCHMARK DISC, 50.70' E. OF E. OF WEST ST, 53.49' ENE OF THE SW COR., NW1/4, SEC. 13, TWP. 28-S, R-1-W ON THE NW CORNER OF A CONCRETE SLAB FOR A SANITARY SEWER LIFT STATION. ELEV. = 1282.52 NAVD83

MINIMUM BUILDING PAD ELEVATIONS FOR LOWEST OPENING TO THE STRUCTURES		
LOT	BLOCK	ELEVATION
		NAVD83
1	A	1284.7

State of Kansas) SS We, Baughman Company, P.A., Surveyors in Sedgwick County and state do hereby certify that we have surveyed and platted "LANGE ADDITION", Wichita, Sedgwick County, Kansas and that the accompanying plat is a true and correct exhibit of the property surveyed, described as the S1/2 of the S1/2 of the NW1/4 of Sec. 13, Twp. 28-S, R-1-W of the 6th P.M., Sedgwick County, Kansas, EXCEPT the north 395.00 feet of the west 660.00 feet thereof, and EXCEPT the west 40 feet for road.
 Existing public easements and dedications being vacated by virtue of K.S.A. 12-512(b).
 Baughman Company, P.A.

Michael G. Conroy, Surveyor
 Michael G. Conroy 3-12-2008, Surveyor

We, the undersigned, holders of a mortgage on the above described property, do hereby consent to this plat of "LANGE ADDITION", Wichita, Sedgwick County, Kansas.
 Kanza Bank
 Max Whittle, SUP, SUP

State of Kansas) SS The foregoing instrument acknowledged before me, this 16 day of April, 2008, by Max Whittle, SUP of Kanza Bank, on behalf of the bank.

Ashley Clinesmith, Notary Public
 My App't. Exp. October 1, 2011

State of Kansas) SS The foregoing instrument acknowledged before me, this 14th day of April, 2008, by Jeff M. Lange, President of JBL, Inc., a Kansas corporation, on behalf of the corporation.
 Judith M. Terhune, Notary Public
 My App't. Exp. 11-7-09

Jeff M. Lange, President

This plat of "LANGE ADDITION", Wichita, Sedgwick County, Kansas has been submitted to and approved by the Wichita-Sedgwick County Metropolitan Area Planning Commission, Wichita, Kansas.
 Dated this day of April, 2008.
 Wichita-Sedgwick County Metropolitan Area Planning Commission

M. S. Mitchell, Chair
 John L. Schlegel, Secretary
 Carl Brewer, Mayor
 Karen Sublett, City Clerk

Reviewed in accordance with K.S.A. 58-2005 on this day of April, 2008.

Tricia L. Robello, L.S. #1246
 Deputy County Surveyor
 Sedgwick County, Kansas

Entered on transfer record this day of April, 2008.

Don Brace, County Clerk

State of Kansas) SS This is to certify that this plat has been filed for record in the office of the Register of Deeds, this day of April, 2008 at o'clock M.; and is duly recorded.

Bill Meek, Register of Deeds
 Tonya Buckingham, Deputy

NOTE: A DRAINAGE PLAN HAS BEEN DEVELOPED FOR THIS SUBDIVISION AND IS ON FILE WITH THE CITY OF WICHITA, KANSAS. DRAINAGE INTENT SHALL REMAIN AS DEPICTED OR AS MODIFIED WITH THE APPROVAL OF THE CITY ENGINEER OF THE CITY OF WICHITA, KANSAS. NO OBSTRUCTIONS WHICH IMPEDE THE FLOW OF THIS DRAINAGE PLAN SHALL BE ALLOWED.

Baughman Company, P.A.
 315 Ellis St., Wichita, KS 67211 P 316-262-7271 F 316-262-0149
 Baughman ENGINEERING | SURVEYING | PLANNING | LANDSCAPE ARCHITECTURE
 E:\PLAT\LANGE.DWG\LANGE_F.DWG\MDC