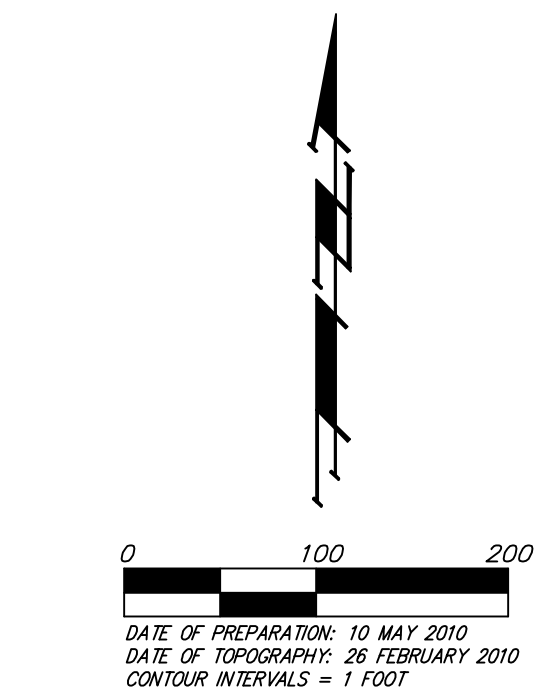
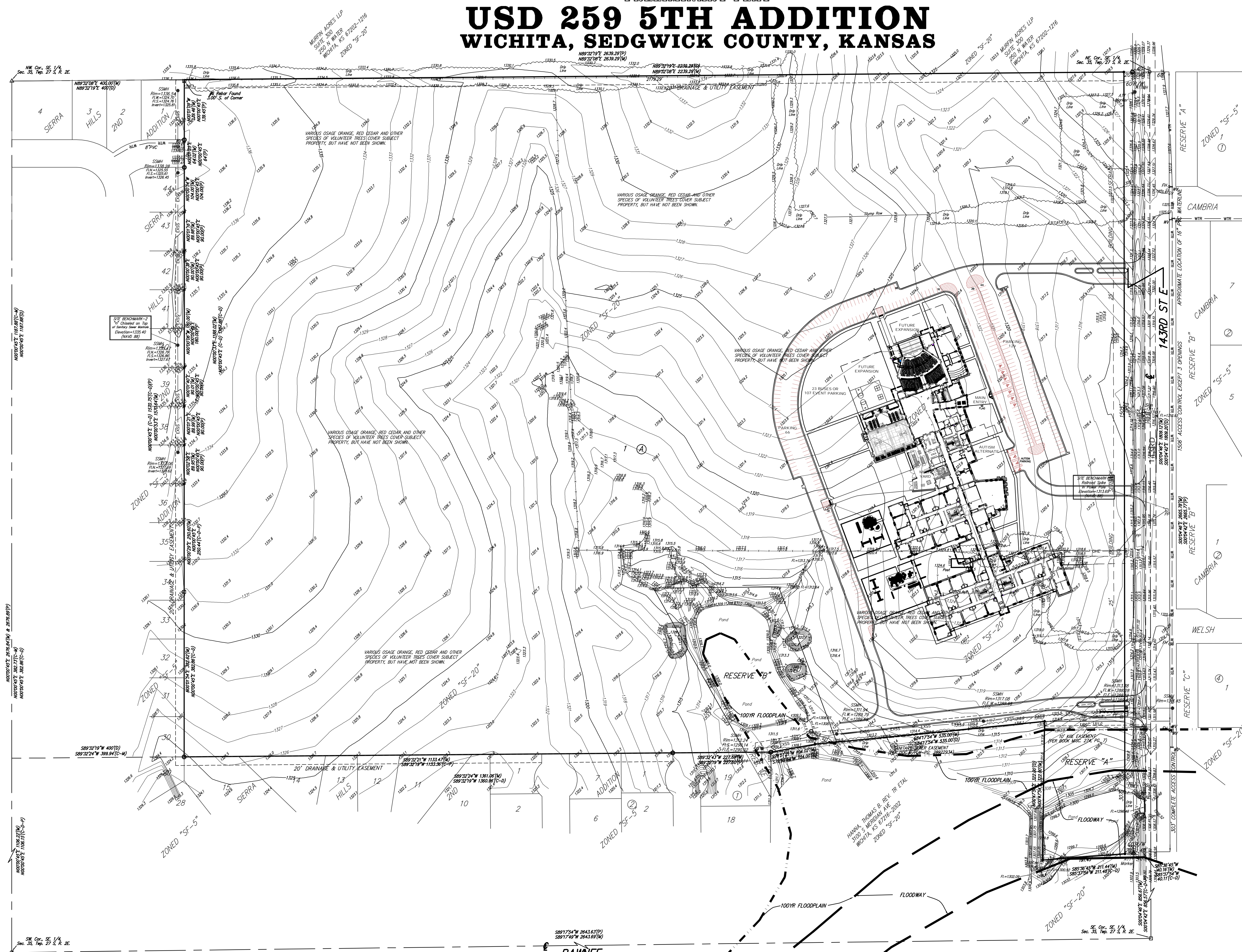


PRELIMINARY PLAT
USD 259 5TH ADDITION
WICHITA, SEDGWICK COUNTY, KANSAS



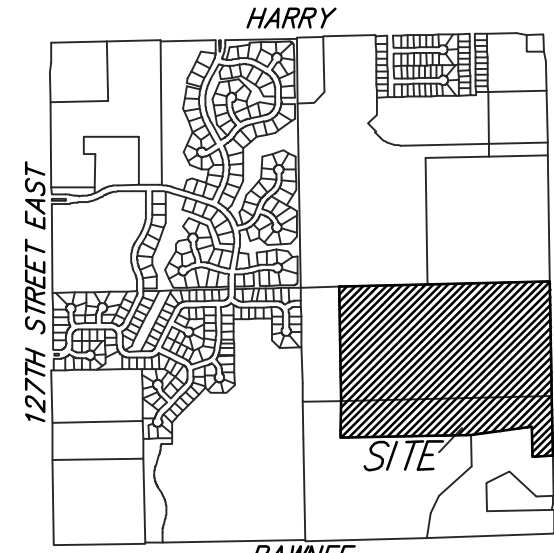
OWNER:
 UNIFIED SCHOOL DISTRICT 259
 201 N. WATER
 WICHITA, KS 67202
 316-973-4000

LEGAL DESCRIPTION:
 THAT PART OF THE SOUTHEAST QUARTER OF SECTION 35, TOWNSHIP 27 SOUTH, RANGE 2 EAST OF THE SIXTH PRINCIPAL MERIDIAN, SEDGWICK COUNTY, KANSAS, DESCRIBED AS BEING THE NORTH 1187.88 FEET OF SAID SOUTHEAST QUARTER, EXCEPT THE WEST 400.00 FEET THEREOF, AND EXCEPT THE EAST 40.00 FEET THEREOF, TOGETHER WITH THAT PART OF THE SOUTHWEST QUARTER OF SECTION 35, TOWNSHIP 27 SOUTH, RANGE 2 EAST OF THE SIXTH PRINCIPAL MERIDIAN, SEDGWICK COUNTY, KANSAS, DESCRIBED AS BEGINNING AT THE NORTHEAST CORNER OF SAID SOUTHWEST QUARTER; THENCE S00°04'42"E ALONG THE EAST LINE OF SAID SOUTHWEST QUARTER, 1809.20 FEET; THENCE S85°37'54"W, 251.59 FEET; THENCE N00°47'54"E, 322.00 FEET; THENCE S84°17'54"W, 535.00 FEET; THENCE S79°52'54"W, 104.00 FEET; THENCE S89°32'19"W PARALLEL WITH THE NORTH LINE OF SAID SOUTHWEST QUARTER, 1760.97 FEET TO THE WEST LINE OF SAID SOUTHWEST QUARTER; THENCE N00°00'45"E ALONG SAID WEST LINE, 1570.75 FEET TO THE NORTHEAST CORNER OF SAID SOUTHWEST QUARTER; THENCE N89°32'19"E ALONG THE NORTH LINE OF SAID SOUTHWEST QUARTER, 2639.29 FEET TO THE PLACE OF BEGINNING, EXCEPT THE NORTH 1187.88 FEET THEREOF, AND EXCEPT THE WEST 400.00 FEET THEREOF, AND EXCEPT THE EAST 40.00 FEET THEREOF.

BENCHMARK:
 AS DEPICTED ON THE FACE OF THE PLAT

NOTE: FEMA Floodplain and Floodway Boundaries are scaled per location per FEMA FIRM Panel 395 of 700, for Sedgwick County, Kansas, Map Number 20173C0395E Effective February 2, 2007.

- #4 Baughman Rebar Set
 - Sedgwick County Capped Corner Found
 - △ #5 Rebar Found
 - 1" Iron Pipe Found
 - ⊕ #3 Corbar Rebar Found
 - ⊖ #5 R&B Rebar Found
 - ⊗ #6 Rebar Found
 - ⊘ #8 Rebar Found
 - (C) = Calculated
 - (D) = Described
 - (M) = Measured
 - (P) = Plotted
- ATM# ATM# - A.T.&T. Telephone Manhole
 FV# FV# - Fire Hydrant
 GV# GV# - Gas Valve
 GW# GW# - Guy Wire
 PM# PM# - Pot Hole Marker
 PP# PP# - Power Pole
 S# S# - Sign
 SSM# SSM# - Sanitary Sewer Manhole
 W# W# - Water Valve
- RESERVE "A"** IS RESERVED FOR OPEN SPACE, LANDSCAPING, LAKES, BERMS, FLOODPLAIN AND FLOODWAY, DRAINAGE PURPOSES, AND UTILITIES AS CONFINED TO EASEMENTS.
- RESERVE "B"** IS RESERVED FOR OPEN SPACE, LANDSCAPING, LAKES, BERMS, FLOODPLAIN, DRAINAGE PURPOSES, AND UTILITIES AS CONFINED TO EASEMENTS.



VICINITY MAP
 SEC. 35, 127S, R2E