

BILL G. YUNG DESIGN
 WICHITA, KS. 67220
 4912 E. 20TH STREET NORTH
 316-683-6567

DATE: SEPT. 18, 1990
 REV.

SHEET TITLE
 PRELIMINARY PLAN

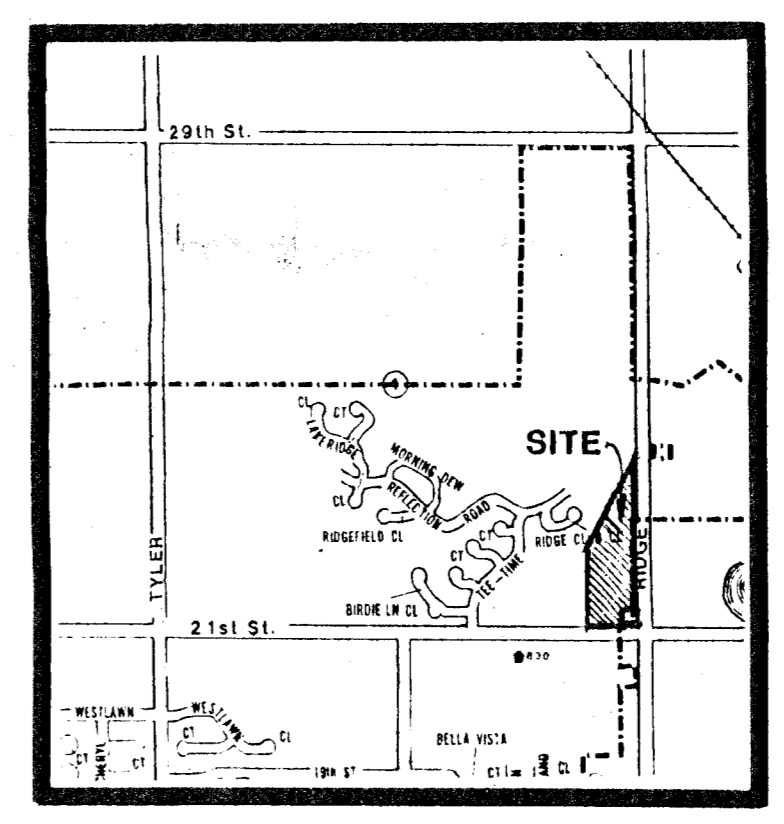
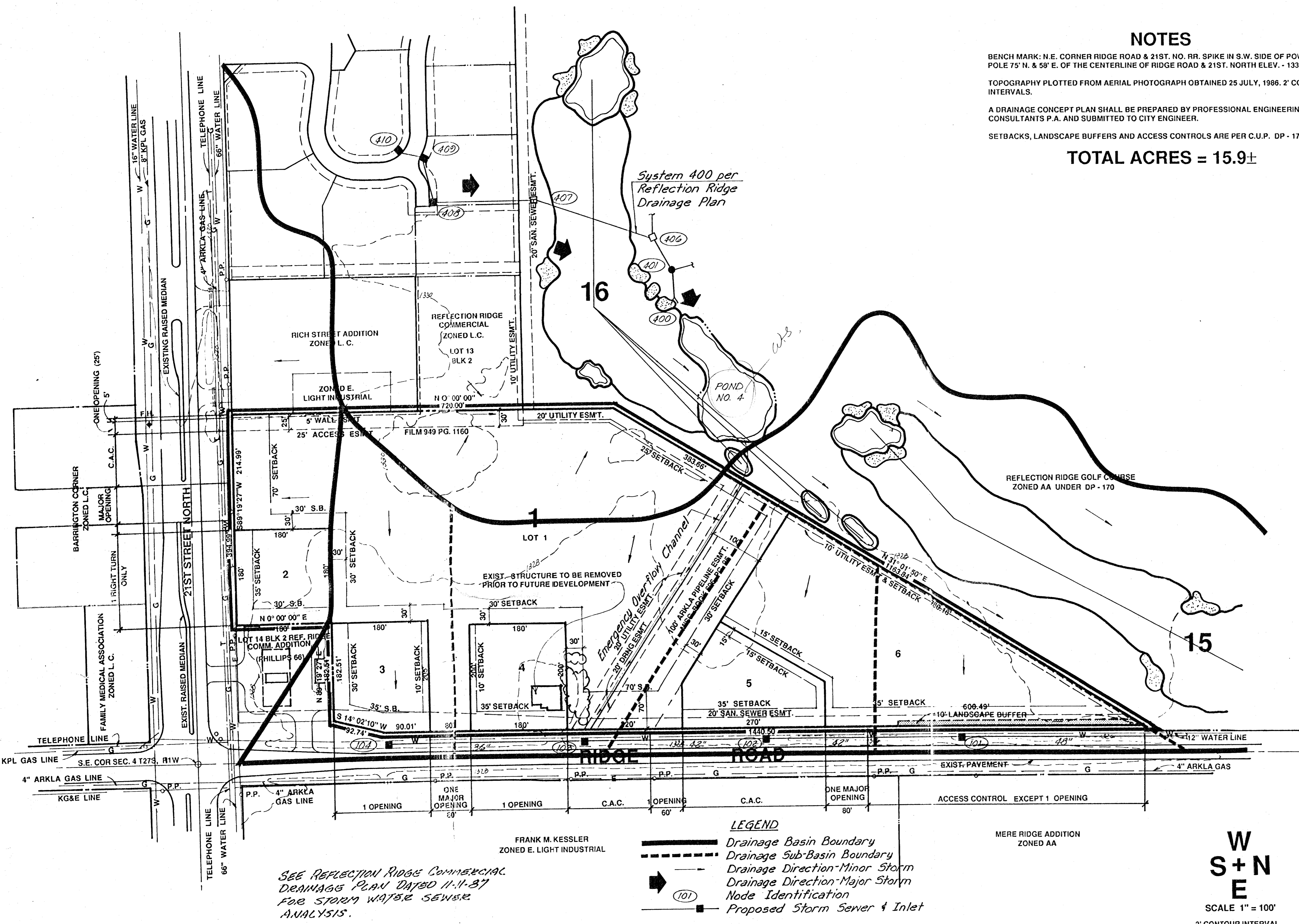
PROJECT
 REFLECTION RIDGE COMMERCIAL
 2ND ADDITION

SHEET
 OF

NOTES

BENCH MARK: N.E. CORNER RIDGE ROAD & 21ST. NO. RR. SPIKE IN S.W. SIDE OF POWER POLE 75' N. & 58' E. OF THE CENTERLINE OF RIDGE ROAD & 21ST. NORTH ELEV. - 1330.70
 TOPOGRAPHY PLOTTED FROM AERIAL PHOTOGRAPH OBTAINED 25 JULY, 1986. 2' CONTOUR INTERVALS.
 A DRAINAGE CONCEPT PLAN SHALL BE PREPARED BY PROFESSIONAL ENGINEERING CONSULTANTS P.A. AND SUBMITTED TO CITY ENGINEER.
 SETBACKS, LANDSCAPE BUFFERS AND ACCESS CONTROLS ARE PER C.U.P. DP - 171

TOTAL ACRES = 15.9±



LOCATION MAP

Lot 14, Block 2 Reflection Ridge Commercial; Lots 2-6 Reflection Ridge Commercial 2nd; and a portion Lot 1 Reflection Ridge Commercial 2nd shall be graded to drain to streets or existing drainage systems via drives, flumes, private storm sewer systems and/or other approved drainage facilities.

- LEGEND**
- Drainage Basin Boundary
 - - - Drainage Sub-Basin Boundary
 - Drainage Direction - Minor Storm
 - Drainage Direction - Major Storm
 - (101) Node Identification
 - Proposed Storm Sewer & Inlet

**W
S+N
E**
 SCALE 1" = 100'
 2' CONTOUR INTERVAL

DRAINAGE PLAN

(A REPLAT OF A PORTION OF REFLECTION RIDGE COMMERCIAL ADDITION)

PROFESSIONAL ENGINEERING CONSULTANTS, P.A.
 ENGINEERS
 WICHITA, KANSAS

10-8-90
 11-6-90

**REFLECTION RIDGE COMMERCIAL
 2ND ADDITION**

OWNER: REFLECTION RIDGE INC., 7926 W. 21ST STREET, WICHITA, KS 67212 (316) 721-2153

170'G