

**GENERAL GRADING NOTES.**

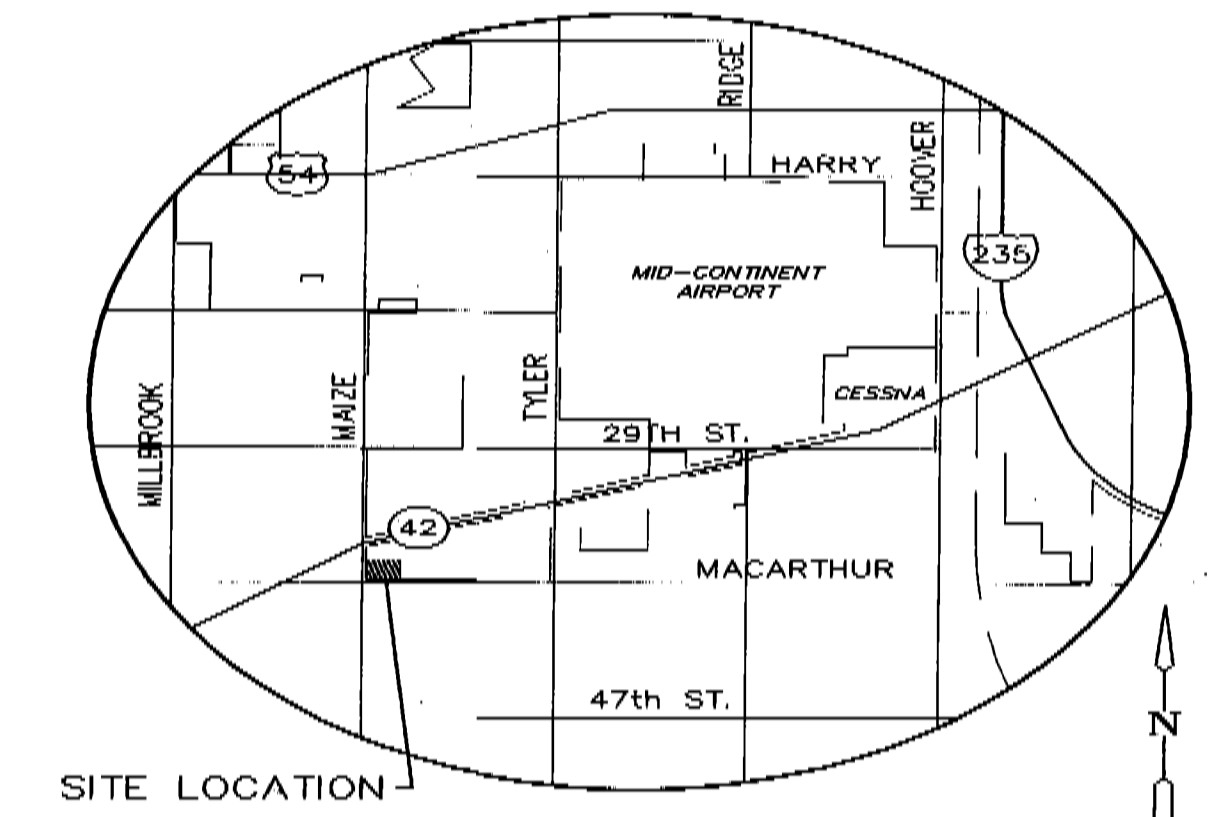
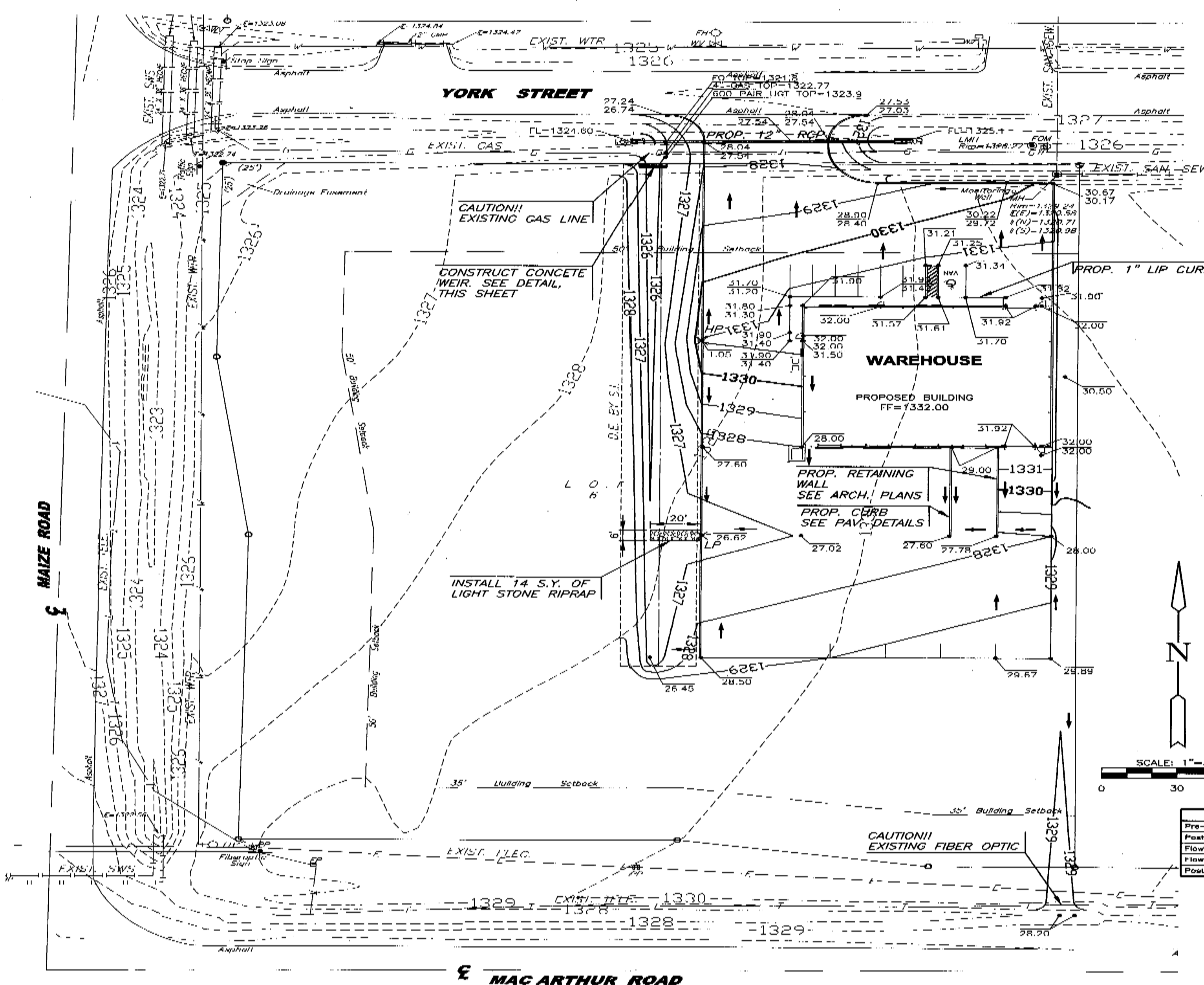
- UNLESS SHOWN OR STATED OTHERWISE ON THESE DRAWINGS, MATERIALS & CONSTRUCTION SHALL BE IN ACCORDANCE WITH CITY OF WICHITA STANDARD SPECIFICATIONS.
- A 6" LAYER OF TOPSOIL SHALL BE STRIPPED IN ALL AREAS OF CUT AND SAVED BACK FOR REPLACEMENT IN NON-BUILDING AND NON-PAVED AREAS. ANY EXCESS TOPSOIL SHALL BE SEPARATELY STOCKPILED ON-SITE AT AN APPROVED LOCATION. ALL LANDSCAPING AREAS SHALL BE BACKFILLED WITH A 12" MIN. LAYER OF TOPSOIL.
- TOPSOIL SHALL BE REPLACED AT A DEPTH OF 6" UNLESS OTHERWISE NOTED. THE FINISHED GRADE INDICATES THE SURFACE ELEVATION AFTER THE TOPSOIL LAYER HAS BEEN PLACED.
- FILL MATERIAL SHALL BE OF APPROVED GRANULAR MATERIAL, OR LOW VOLUME CHANGE (LVC) MATERIAL PLACED IN LIFTS NOT EXCEEDING 9" LOOSE THICKNESS AND COMPACTED TO AT LEAST 92% OF THE MATERIAL'S MAXIMUM DRY DENSITY, AS DETERMINED BY ASTM D-998.
- UNDER PAVEMENT, THE UPPER 6" OF RESULTING EXPOSED GRANULAR SURGRADE PRIOR TO FILL PLACEMENT AND ALL ADDITIONAL FILL SHOULD BE COMPACTED TO AT LEAST 98% OF MDD BY ASTM D-998. ADDITIONAL FILL SHALL BE PLACED IN 6" (MAX.) THICK LIFTS (LOOSE THICKNESS) AND COMPACTED AT WORKABLE MOISTURE CONTENTS.
- IF THE CONTRACTOR USES A MOISTURE AGENT TO STABILIZE THE SUBGRADE UNDER THE PAVED AREAS, A PROCTOR TEST SHALL BE PERFORMED ON ANY FILL UNDER PAYMENT, WHETHER FROM BORROW PIT OR CONTRACTOR FURNISHED FROM AN ON-SITE SOURCE. THE PROCTOR SHALL BE USED TO DETERMINE THE APPROPRIATE MOISTURE AGENT AND APPLICATION RATE.
- THE CONTRACTOR SHALL BE RESPONSIBLE FOR PRESERVING PROPERTY IRONS. THE CONTRACTOR SHALL BE REQUIRED TO RE-ESTABLISH ANY PROPERTY IRONS WHICH ARE DAMAGED OR DESTROYED BY HIS CONSTRUCTION OPERATIONS. SUCH IRONS SHALL BE RE-ESTABLISHED BY A LICENSED LAND SURVEYOR IN ACCORDANCE WITH STATE LAWS.
- CONTRACTOR SHALL NOTIFY UTILITY COMPANIES OF CONSTRUCTION SCHEDULING.
- EXISTING UTILITIES AND THEIR LOCATIONS, AS SHOWN ON THE PLANS, REPRESENT THE BEST INFORMATION OBTAINABLE FOR DESIGN. LOCATION INFORMATION HAS BEEN OBTAINED FROM THE VARIOUS COMPANIES AND IS EITHER FROM COMPANY UTILITY DRAWINGS OR COMPANY PROVIDED FIELD LOCATIONS. THE PLAN LOCATIONS SHOWN ARE NOT GUARANTEED. ADDITIONAL EXISTING UTILITIES MAY ALSO BE ENCOUNTERED.
- CONTRACTOR WILL BE REQUIRED TO PROVIDE A MINIMUM ADVANCE NOTICE OF SEVENTY-TWO (72) HOURS TO UTILITY COMPANIES PRIOR TO STARTING ANY EXCAVATION AS FOLLOWS:  
 KANSAS ONE-CALL 1-800-344-7233  
 or 687-2470 (LOCAL WICHITA)  
 THE CONTRACTOR MUST NOTIFY THE FOLLOWING IN CASE OF AN EMERGENCY:  
 AT&T (TELEPHONE) 800-870-8390  
 COX COMMUNICATIONS (CABLE) 262-0861  
 KANSAS GAS SERVICE (GAS) 832-3101  
 CITY OF WICHITA WATER & SEWER 262-6000  
 WESTAR ELECTRIC 291-5512  
 AQUILA (GAS) 800-303-0357
- RIBBLE FROM THE REMOVAL OF MISCELLANEOUS STRUCTURES AND EXCESS EXCAVATION WHICH IS TO BE WASTED SHALL BE DISPOSED OF ON SITES TO BE PROVIDED BY THE CONTRACTOR. THESE SITES SHALL BE APPROVED BY THE ENGINEER AS TO SUITABILITY, APPEARANCE AND SITE LOCATION. LOCATIONS THAT IN THE OPINION OF THE ENGINEER, WOULD LEAD TO UNSIGHTLY APPEARANCES, WILL NOT BE APPROVED. ALL DISPOSAL SITES MUST BE APPROVED BY THE KANSAS DEPARTMENT OF HEALTH AND ENVIRONMENT. MATERIAL EITHER STOCKPILED OR DISPOSED OF IN A FLOOD PLAIN WOULD REQUIRE A KANSAS STATE BOARD OF AGRICULTURE PERMIT. ANY MATERIAL DUMPED IN WATERS OF THE UNITED STATES OR WETLANDS IS SUBJECT TO U.S. CORPS OF ENGINEERS PERMITTING REGULATIONS. ANY MATERIAL BURIED OR STOCKPILED BEYOND APPROVED CONSTRUCTION LIMITS WOULD REQUIRE ADDITIONAL ARCHAEOLOGICAL INVESTIGATIONS UNLESS BURIED IN A PREVIOUSLY APPROVED BORROW LOCATION.
- ALL EXISTING TRASH/DEBRIS WITHIN THE CONSTRUCTION AREAS SHALL BE REMOVED AND DISPOSED OF ON SITES PROVIDED BY THE CONTRACTOR. THESE SITES SHALL BE APPROVED BY THE ENGINEER AND MEET THE REQUIREMENTS OF NOTE 11 ABOVE.
- FILL AREAS OUTSIDE OF AREAS TO BE PAVED ARE TO BE COMPACTED TO 95% STANDARD PROCTOR DENSITY.
- THE CONTRACTOR SHALL OVER EXCAVATE THE BUILDING PAD AS REQUIRED TO ESTABLISH A LOW VOLUME CHANGE ZONE IN ACCORDANCE WITH THE RECOMMENDATIONS OF THE SOILS REPORT TO BE PROVIDED BY THE OWNER.
- ALL GRADES ADJACENT TO PROPOSED BUILDINGS SHALL BE COORDINATED WITH THIS PLAN BY THE BUILDING ARCHITECT/ENGINEER. THIS INCLUDES ANY AND ALL APPLICABLE ADA REQUIREMENTS.
- SEE PAVING DETAILS FOR SURGRADE AND PAVEMENT THICKNESS REQUIREMENTS.
- LONGITUDINAL SLOPES ON SIDEWALKS SHALL NOT EXCEED 5% AND CROSS SLOPES ON SIDEWALKS SHALL NOT EXCEED 2%.

**LEGAL DESCRIPTION**

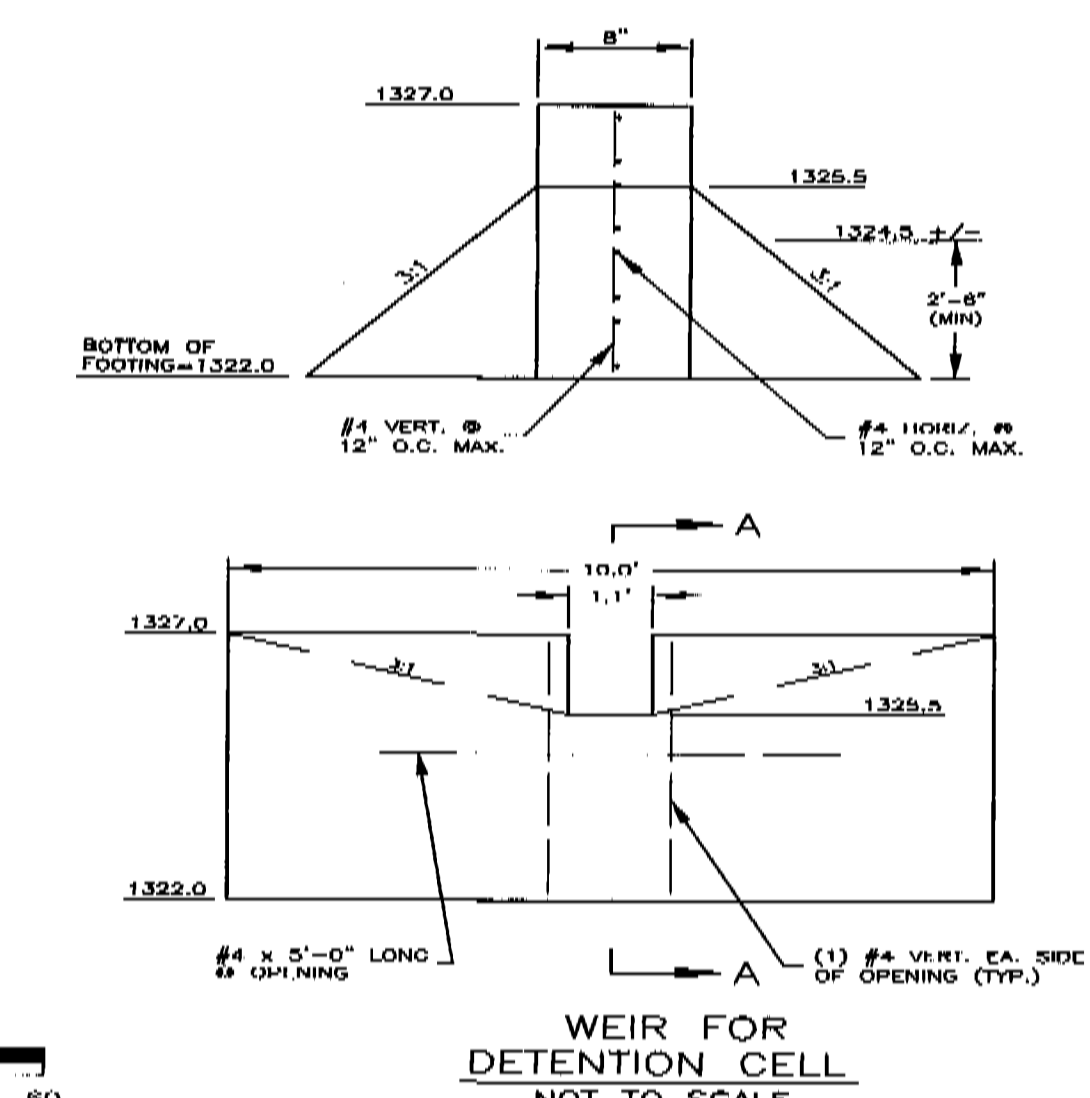
A PORTION OF LOT 6, BLOCK A,  
MID-CONTINENT INDUSTRIAL PARK 1, SHERIDAN COUNTY, KS.

**BENCHMARKS**

BM#1 CHISEL SQUARE CUT ON SOUTH  
HINDSHAM RCBC LOCATED 36' EAST OF  
E-42 AND MAIZE ROAD.  
ELEV.-1331.72 (NGVD MSL)



**LOCATION MAP**



**WEIR FOR DETENTION CELL**  
NOT TO SCALE

	2-Year	5-Year	10-Year	25-Year	100-Year
Pre-Project Flow to the Intersection of Maize & York (cfs)	7.7	9.2	10.6	13.0	13.8
Post-Project Flow to the Intersection of Maize & York (cfs)	7.7	9.1	10.5	12.2	13.7
Flow to Detention (cfs)	0.0	0.0	0.8	7.9	8.9
Flow out of Detention (cfs)	3.4	4.0	4.6	5.1	6.1
Post Project Water Surface Elevation (feet)	1326.5	1326.8	1326.7	1326.0	1326.0

**LEGEND (EXISTING)**

- - - - - SANITARY SEWER LINE
- - - - - WATER LINE
- - - - - STORM WATER SEWER
- - - - - ELECTRIC TRANSFORMER
- ⊙ FH FIRE HYDRANT
- ⊙ WV WATER VALVE

**MKEC**  
ENGINEERING  
CONSULTANTS, INC.  
411 N. WEBB ROAD  
WICHITA, KS. 67206  
316-684-9400

**CIVIL GRADING PLAN**  
**SS AIR EXPRESS WAREHOUSE**  
**MID-CONTINENT**  
**INDUSTRIAL PARK**

**GRADING PLAN**  
SHEET TITLE  
PROJECT NUMBER  
STATION BY: SRS  
DRAWN BY: MKEC  
CHECKED BY: SRS  
DATE: November 2008  
REVISIONS  
SHEET NO. 1 of 2