

OAK CREEK OFFICE PARK

AN ADDITION WICHITA, SEDGWICK COUNTY, KANSAS

STATE OF KANSAS }
 COUNTY OF SEDGWICK } 55

WE, PROFESSIONAL ENGINEERING CONSULTANTS, P.A., ENGINEERS AND SURVEYORS IN ADDRESS 5141 AND COUNTY, MO HEREBY CERTIFY THAT WE HAVE SURVEYED AND PLATED OAK CREEK OFFICE PARK, AN ADDITION TO WICHITA, SEDGWICK COUNTY, KANSAS, INTO LOTS, A BLOCK, AND RECEIVES THE SAME BEING A RE-PLAT OF LOT 1, BLOCK 1, AND RESERVE "F", OAK CREEK, AN ADDITION TO WICHITA, SEDGWICK COUNTY, KANSAS.

ALL PUBLIC EASEMENTS LYING WITHIN THE ABOVE DESCRIBED TRACT OF LAND ARE HEREBY RECALLED AND REVERTED BY VIRTUE OF KSA 12-512(D) UNLESS NOTED.

JAMES R. BECKETT, P.L.S. NO. 832
 PROFESSIONAL ENGINEERING CONSULTANTS, P.A.

EASEMENTS FOR THE CONSTRUCTION AND MAINTENANCE OF PUBLIC UTILITIES ARE HEREBY GRANTED TO THE CITY OF WICHITA.

ALL ABUTTERS' RIGHT OF ACCESS TO AND FROM 21ST STREET NORTH OVER AND ACROSS THE EAST PROPERTY LINE IS HEREBY GRANTED TO THE CITY OF WICHITA. PROPERLY MAINTAIN THAT THERE SHALL BE ACCESS TO 21ST STREET NORTH AT ONE LOCATION AS SHOWN.

A DRAINAGE PLAN HAS BEEN APPROVED FOR THIS PLAT. ALL DRAINAGE EASEMENTS, RIGHTS OF WAY AND RESERVES SHALL BE MAINTAINED AS ESTABLISHED GRADES AND UNOBSTRUCTED TO ALLOW FOR THE CONVEYANCE OF STORM WATER, UNLESS MODIFIED WITH THE APPROVAL OF THE CITY ENGINEER.

RESERVE "A" IS HEREBY PLATED FOR PARKING, DRIVEWAYS, ENTRY MONUMENTS, SIGNS, SIGNALS, LIGHTS, DRAINAGE AND UTILITIES CONFINED TO EASEMENTS, RESERVES "M" AND "N" ARE HEREBY PLATED FOR DRAINAGE AND UTILITIES CONFINED TO EASEMENTS, RESERVE "O" IS HEREBY PLATED FOR ENTRY MONUMENTS, UNPAVED DRIVEWAYS, SIGNALS AND UTILITIES CONFINED TO EASEMENTS, RESERVES "P" THROUGH "T" SHALL BE OWNED AND MAINTAINED BY AN OWNER'S ASSOCIATION TO BE FORMED WITHIN OAK CREEK OFFICE PARK ADDITION.

KNOW ALL MEN BY THESE PRESENTS THAT WE, THE UNDISBURSED PROPERTY OWNERS OF THE LAND AS ABOVE SET FORTH IN THE SURVEYORS CERTIFICATE, HAVE CAUSED THE LAND TO BE SURVEYED AND PLATED INTO LOTS, A BLOCK, AND RESERVES, THE SAME TO BE KNOWN AS OAK CREEK OFFICE PARK, AN ADDITION TO WICHITA, SEDGWICK COUNTY, KANSAS.

OWNER:

SLAWSON COMMERCIAL PROPERTIES, L.L.C., A KANSAS LIMITED LIABILITY COMPANY

BY: DAVID A. TRAMBLE, VICE PRESIDENT

STATE OF KANSAS }
 COUNTY OF SEDGWICK } 55

THIS INSTRUMENT WAS ACKNOWLEDGED BEFORE ME ON THIS _____ DAY OF _____, 2009, BY DAVID A. TRAMBLE, VICE PRESIDENT OF SLAWSON COMMERCIAL PROPERTIES, L.L.C., A KANSAS LIMITED LIABILITY COMPANY.

_____, NOTARY PUBLIC

LYNN HOLLOWAY

MY APPOINTMENT EXPIRES: _____

WE, TRUIST BANK, N.A., HOLDER OF A MORTGAGE ON THE ABOVE DESCRIBED PROPERTY, DO HEREBY CONSENT TO THE PLATING OF OAK CREEK OFFICE PARK, AN ADDITION TO WICHITA, SEDGWICK COUNTY, KANSAS.

ROGER G. FASUWOKI, SENIOR VICE PRESIDENT

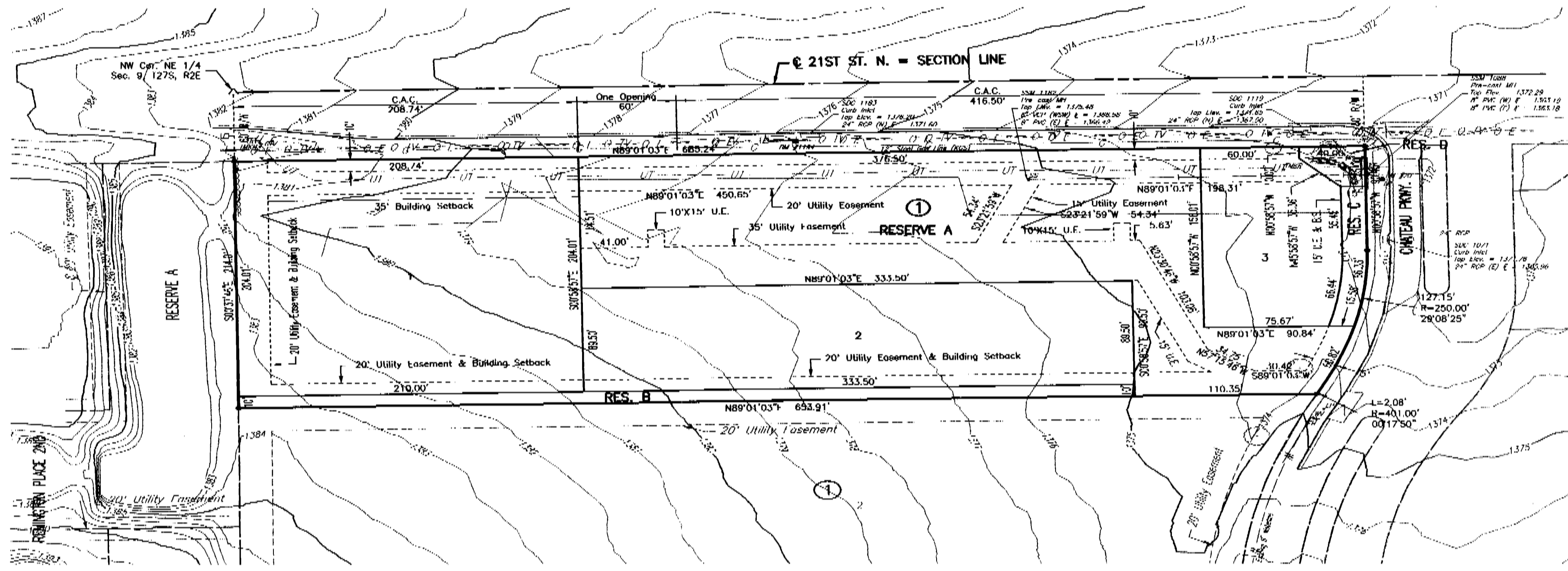
STATE OF KANSAS }
 COUNTY OF SEDGWICK } 55

THIS INSTRUMENT WAS ACKNOWLEDGED BEFORE ME ON THIS _____ DAY OF _____, 2009, BY ROGER G. FASUWOKI, SENIOR VICE PRESIDENT OF TRUIST BANK, N.A.

_____, NOTARY PUBLIC

MELINDA A. SPIES

MY APPOINTMENT EXPIRES: _____



SCALE: 1" = 50'
 - 1/2" MINIMUM W/PEC CAP UNLESS OTHERWISE NOTED

BENCHMARK
 BM #20 (off site)
 Chateau "C" on East side of concrete base for light pole at SW corner of 21st St. N. and Chateau Parkway.
 Elev. = 1372.59

THIS PLAT OF OAK CREEK OFFICE PARK HAS BEEN SUBMITTED TO AND APPROVED BY THE WICHITA SEDGWICK COUNTY METROPOLITAN AREA PLANNING COMMISSION, WICHITA, KANSAS.

DATED THIS _____ DAY OF _____, 2009.

WICHITA-SEDGWICK COUNTY METROPOLITAN AREA PLANNING COMMISSION

_____, CHAIR

DARRILL DOWNING

_____, SECRETARY

JOHN L. SCHLEGEL

REVIEWED IN ACCORDANCE WITH K.S.A. 58-2005 ON THIS _____ DAY OF _____, 2009.

TRICIA L. BOBBLE, LS #1246
 DEPUTY COUNTY SURVEYOR
 SEDGWICK COUNTY KANSAS

THIS PLAT IS APPROVED AND ALL DEDICATIONS SHOWN HEREON, IF ANY ARE ACCEPTED BY THE CITY COUNCIL OF THE CITY OF WICHITA, KANSAS, THIS _____ DAY OF _____, 2009.

CARL BREWER _____, MAYOR

KAREN SCHOFIELD _____, CITY CLERK

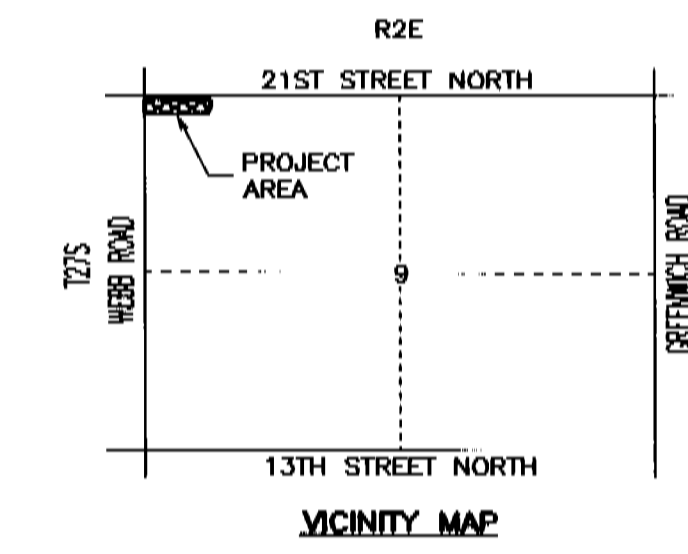
ENTERED ON TRANSFER RECORD THIS _____ DAY OF _____, 2009.

KELLY B. ARNOLD _____, COUNTY CLERK

THIS IS TO CERTIFY THAT THIS INSTRUMENT WAS FILED FOR RECORD IN THE REGISTER OF DEEDS OFFICE AT _____, MO., ON THE _____ DAY OF _____, 2009.

HILL MEIK _____, REGISTER OF DEEDS

TOMMY HUCKINGHAM _____, DEPUTY



Professional Engineering Consultants, P.A.
 303 S. TOPICKA, WICHITA, KANSAS 67202
 316-267-5941 • FAX 316-262-3003