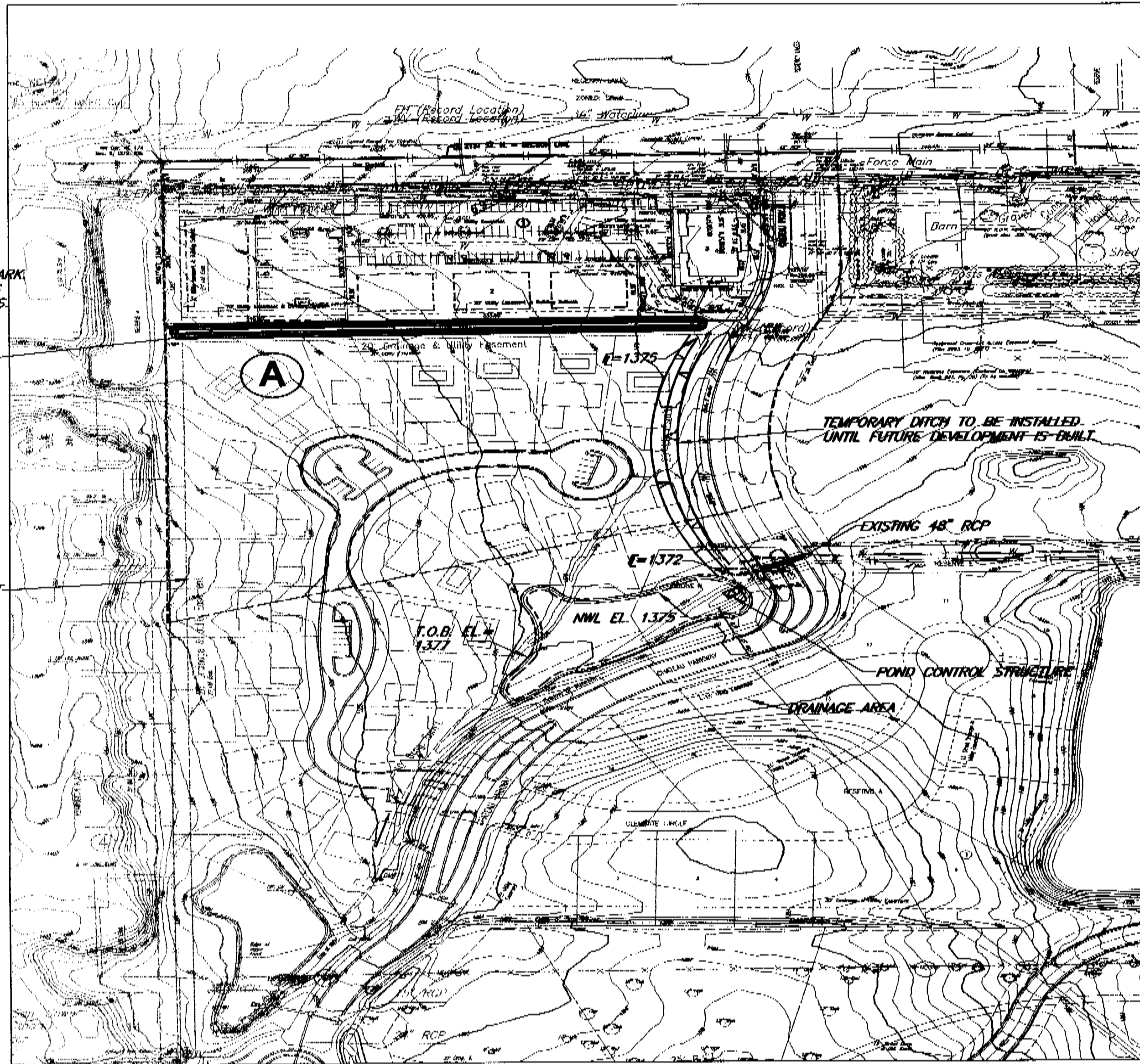
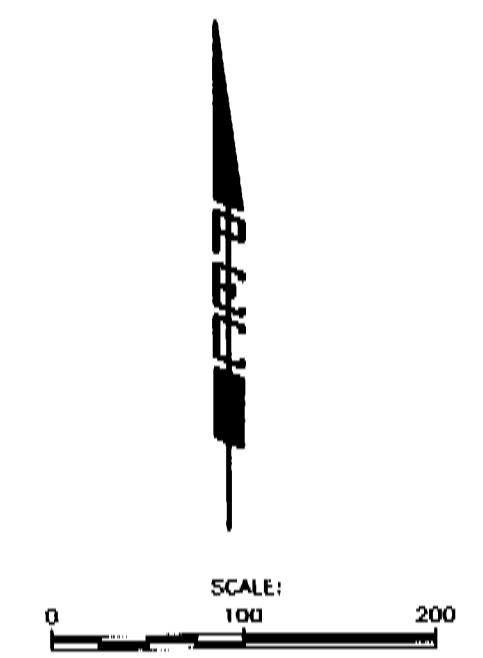


FUTURE OAK CREEK DEVELOPMENT

AN ADDITION TO WICHITA, SEDGWICK COUNTY, KANSAS

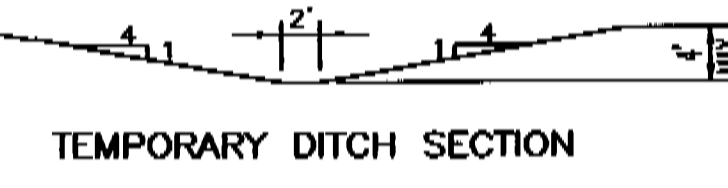


DATE: 02/02/09 10:55 AM
 PROJECT: 36-07761
 DRAWING: 36-07761-002
 SHEET: 4 OF 4
 DESIGNER: JH
 CHECKER: MJC
 DATE: FEBRUARY 2009



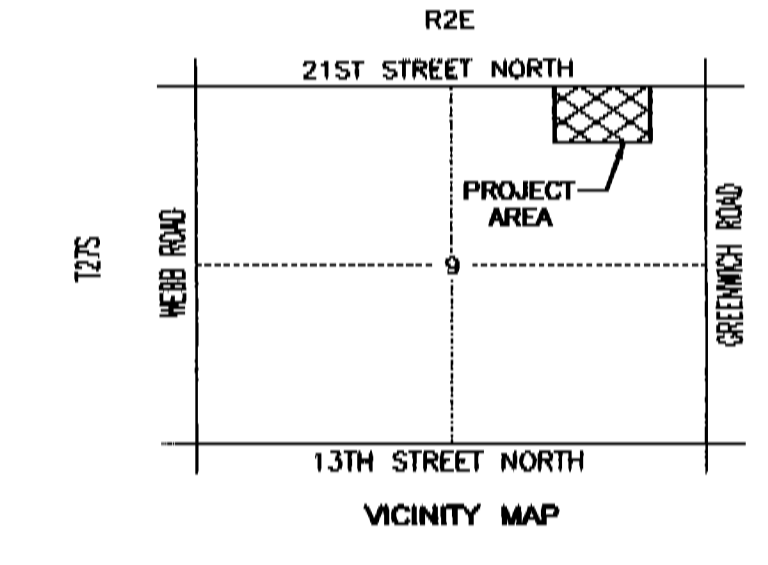
LEGEND

- MAJOR BASIN BOUNDARY
- MINOR BASIN BOUNDARY
- STORM WATER FLOW DIRECTION



DRAINAGE CALCULATIONS

Basin	A
Area (acres)	11.08
2 year - Q (cfs)	24.35
5 year - Q (cfs)	31.38
10 year - Q (cfs)	40.18
25 year - Q (cfs)	48.29
100 year - Q (cfs)	69.83



BENCHMARKS

BM 16
 CHISELED "F" ON CENTER FACE CURB INLET ON WEST SIDE CHATEAU PARKWAY, 600' SOUTH OF 21ST ST. NORTH NEAR NORTHWEST CORNER GLENGATE WEST PLAT.
 ELEV. = 1378.64

BM 21
 CHISELED "F" ON WEST SIDE OF CONCRETE BASE FOR LIGHT POLE ON EAST SIDE CHATEAU PARKWAY, 1200' SOUTH OF 21ST ST. NORTH NEAR SOUTHWEST CORNER GLENGATE WEST PLAT.
 ELEV. = 1389.73

BM 3038
 CIV. IRIS ON WEST TOP OF CURB CHATEAU PARKWAY, 180' NORTH OF GLENGATE COURT.
 F.T.V. = 1384.11

	No. _____ Revision _____ Date _____		
CITY OF WICHITA SEDGWICK COUNTY, KANSAS OAK CREEK OFFICE PARK OFFSITE DRAINAGE BASIN A DESIGN			
Professional Engineering Consultants, P.A. <small>303 S. TOPICKA, WICHITA, KANSAS 67202 TEL: 316.262.2801 FAX: 316.262.3003</small>			
Designed by	JH	Job No.	36-07761
Drawn by	MJC	Date	FEBRUARY 2009
		Sheet	4 of 4