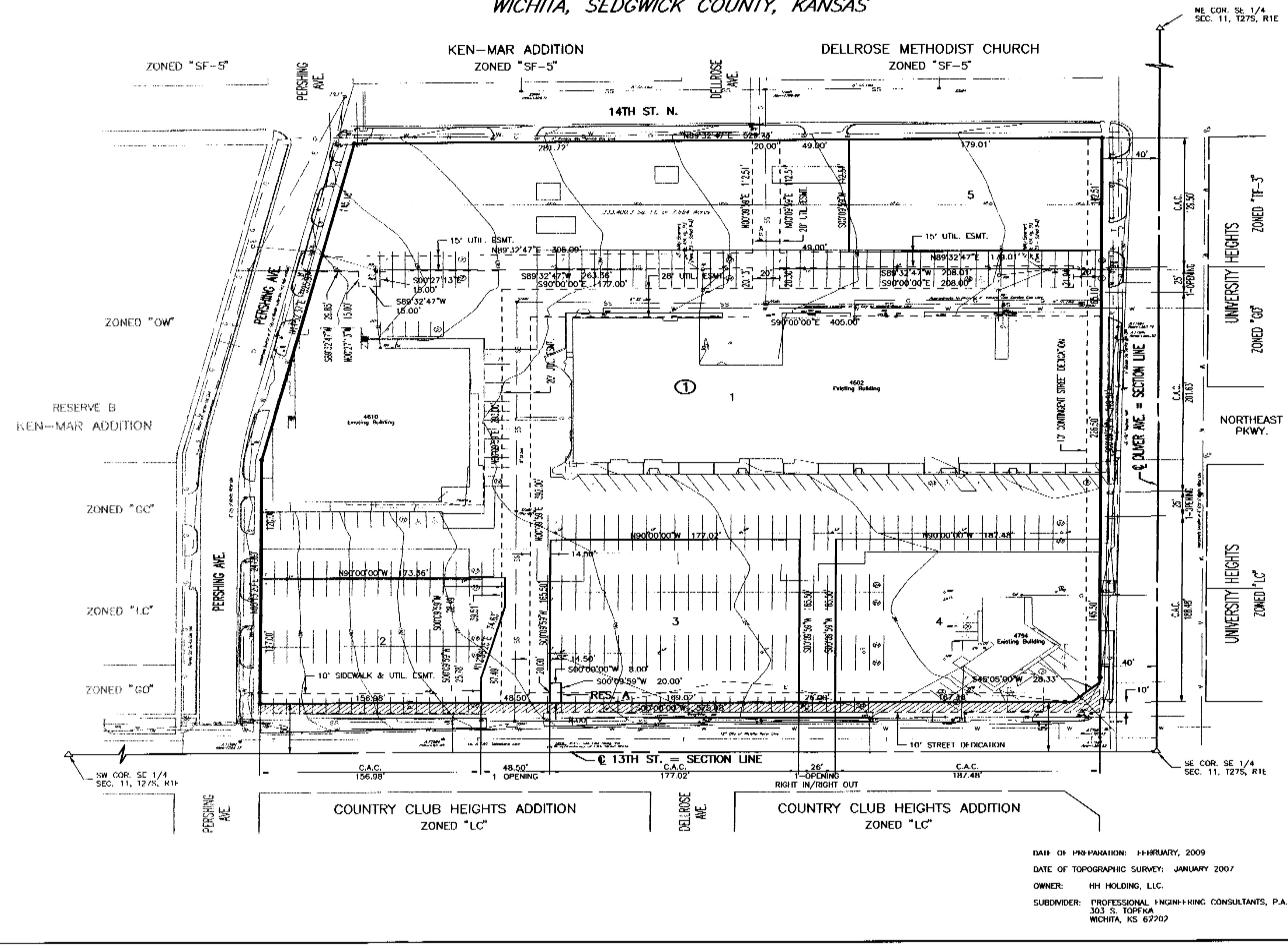


**PROVIDENCE SQUARE ADDITION**  
 A REPLAT OF RESERVE "C", KEN-MAR ADDITION  
 WICHITA, SEDGWICK COUNTY, KANSAS



NE COR. SE 1/4  
 SEC. 11, T27S, R1E

SCALE: 1" = 20'

• = 1/2" REBAR W/PEC CAP UNLESS OTHERWISE NOTED  
 △ = SECTION CORNER

BLANCHMANS  
 "Y" CHECKED ON CONC. NE PROP. COR.  
 (ELEVATION 1.39/90 (NOV 29))

STATE OF KANSAS }  
 COUNTY OF SEDGWICK } SS

WE, PROFESSIONAL ENGINEERING CONSULTANTS, P.A., ENGINEERS AND SURVEYORS IN ADDRESS TO STATE AND COUNTY, DO HEREBY CERTIFY THAT ON THIS DAY OF 2009, WE HAVE SURVEYED AND RE-PLATTED PART OF KEN-MAR ADDITION, WICHITA, SEDGWICK COUNTY, KANSAS, INTO LOTS AND A BLOCK, THE NAME BEING DESCRIBED AS FOLLOWS:

RESERVE "C", KEN-MAR ADDITION, WICHITA, SEDGWICK COUNTY, KANSAS.

ALL PUBLIC EASEMENTS LYING WITHIN THE ABOVE DESCRIBED TRACT OF LAND ARE HEREBY VACATED AND REPLATTED BY VIRTUE OF KSA 12-512(d) ANNOTATED.

JAMES R. BECKETT, R.L.S. NO. 837  
 PROFESSIONAL ENGINEERING CONSULTANTS, P.A.

EASEMENTS FOR THE CONSTRUCTION AND MAINTENANCE OF PUBLIC UTILITIES AND DRAINAGE ARE HEREBY GRANTED.

ACCESS CONTROLS AS INDICATED ARE HEREBY GRANTED TO THE APPROPRIATE GOVERNING BODY.

RESERVE "A" IS HEREBY PLATTED FOR SIDEWALKS, SIGNS AND UTILITIES CONFINED TO EASEMENTS; RESERVE "AT" SHALL BE OWNED AND MAINTAINED BY AN OWNERS ASSOCIATION FORMED WITHIN PROVIDENCE SQUARE ADDITION.

THIS ADDITION IS SUBJECT TO THE CONDITIONS OF PROVIDENCE SQUARE COMMUNITY UNIT PLAN DP-319.

TOP CORNER AND SIGN-1 INDICATION ALONG OLIVER AVE. IS CONTINGENT ON THE REMOVAL OF THE EXISTING BUILDING AT 4602 E. 13TH STREET NORTH.

KNOW ALL MEN BY THESE PRESENTS THAT WE, THE UNDERSIGNED PROPERTY OWNERS OF THE LAND AS ABOVE SET FORTH IN THE SURVEYOR'S CERTIFICATE, HAVE CAUSED THE LAND TO BE SURVEYED AND PLATTED INTO LOTS AND A BLOCK, THE SAME TO BE KNOWN AS PROVIDENCE SQUARE ADDITION, WICHITA, SEDGWICK COUNTY, KANSAS.

OWNERS:  
 HH HOLDING, LLC

KEVASS HARDING, MANAGING PARTNER

STATE OF KANSAS }  
 COUNTY OF SEDGWICK } SS

THIS INSTRUMENT WAS ACKNOWLEDGED BEFORE ME ON THIS DAY OF 2009, BY KEVASS HARDING, MANAGING PARTNER OF HH HOLDING, LLC, \_\_\_\_\_, NOTARY PUBLIC

MY APPOINTMENT EXPIRES: \_\_\_\_\_

THIS PLAT OF PROVIDENCE SQUARE ADDITION, WICHITA, SEDGWICK COUNTY, KANSAS, HAS BEEN SUBMITTED TO AND APPROVED BY THE WICHITA-SEDGWICK COUNTY METROPOLITAN AREA PLANNING COMMISSION, WICHITA, KANSAS.

DATE: THIS \_\_\_\_\_ DAY OF \_\_\_\_\_, 2009.

WICHITA-SEDGWICK COUNTY METROPOLITAN AREA PLANNING COMMISSION

DARRYL DOWNING, CHAIR  
 JOHN L. SCHLEGEL, SECRETARY

REVIEWED IN ACCORDANCE WITH K.S.A. 58-2005 ON THIS \_\_\_\_\_ DAY OF \_\_\_\_\_, 2009.

TRICKA L. ROBBELO, LS #1240  
 DEPUTY COUNTY SURVEYOR  
 SEDGWICK COUNTY, KANSAS

THIS PLAT IS APPROVED AND ALL DEDICATIONS SHOWN HEREON, IF ANY ARE APPLICABLE, BY THE CITY COUNCIL OF THE CITY OF WICHITA, KANSAS, THIS \_\_\_\_\_ DAY OF \_\_\_\_\_, 2009.

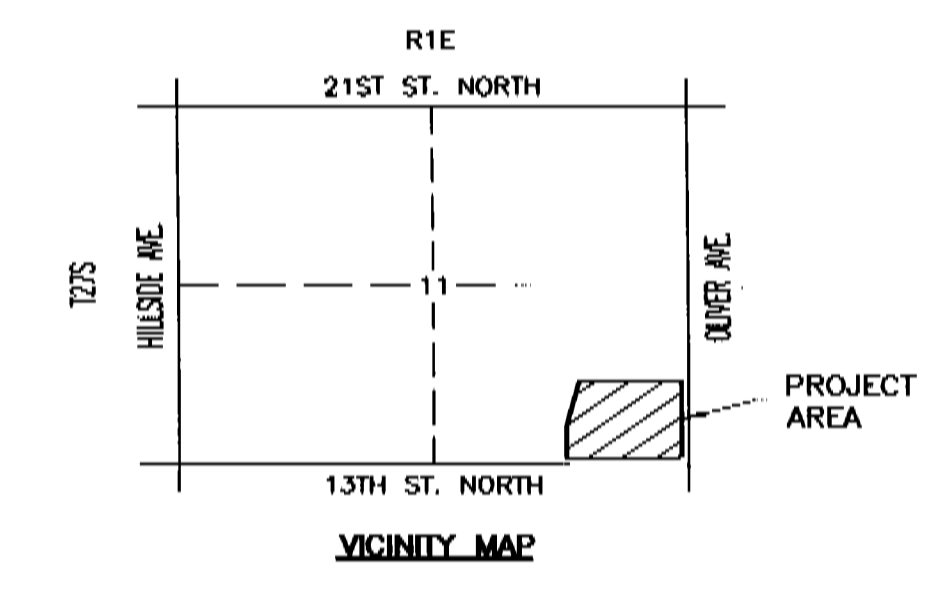
CARL BREWER, MAYOR  
 KAREN SUBLETT, CITY CLERK

ENTERED ON TRANSFER RECORD THIS \_\_\_\_\_ DAY OF \_\_\_\_\_, 2009.

KELLY B. ARNOLD, COUNTY CLERK

THIS IS TO CERTIFY THAT THIS INSTRUMENT WAS FILED FOR RECORD IN THE REGISTER OF DEEDS OFFICE AT \_\_\_\_\_, MO., ON THE \_\_\_\_\_ DAY OF \_\_\_\_\_, 2009.

HHI MFRK, REGISTER OF DEEDS  
 TONYA DUCKINGHAM, DEPUTY



Professional Engineering Consultants, P.A.  
 303 S. TOPICA, WICHITA, KANSAS 67202  
 316-262-2901 FAX 316-262-2828

SW COR. SE 1/4  
 SEC. 11, T27N, R1E

DATE OF PREPARATION: FEBRUARY, 2009  
 DATE OF TOPOGRAPHIC SURVEY: JANUARY 2007  
 OWNER: HH HOLDING, LLC  
 SUBDIVIDER: PROFESSIONAL ENGINEERING CONSULTANTS, P.A.  
 303 S. TOPICA  
 WICHITA, KS 67202