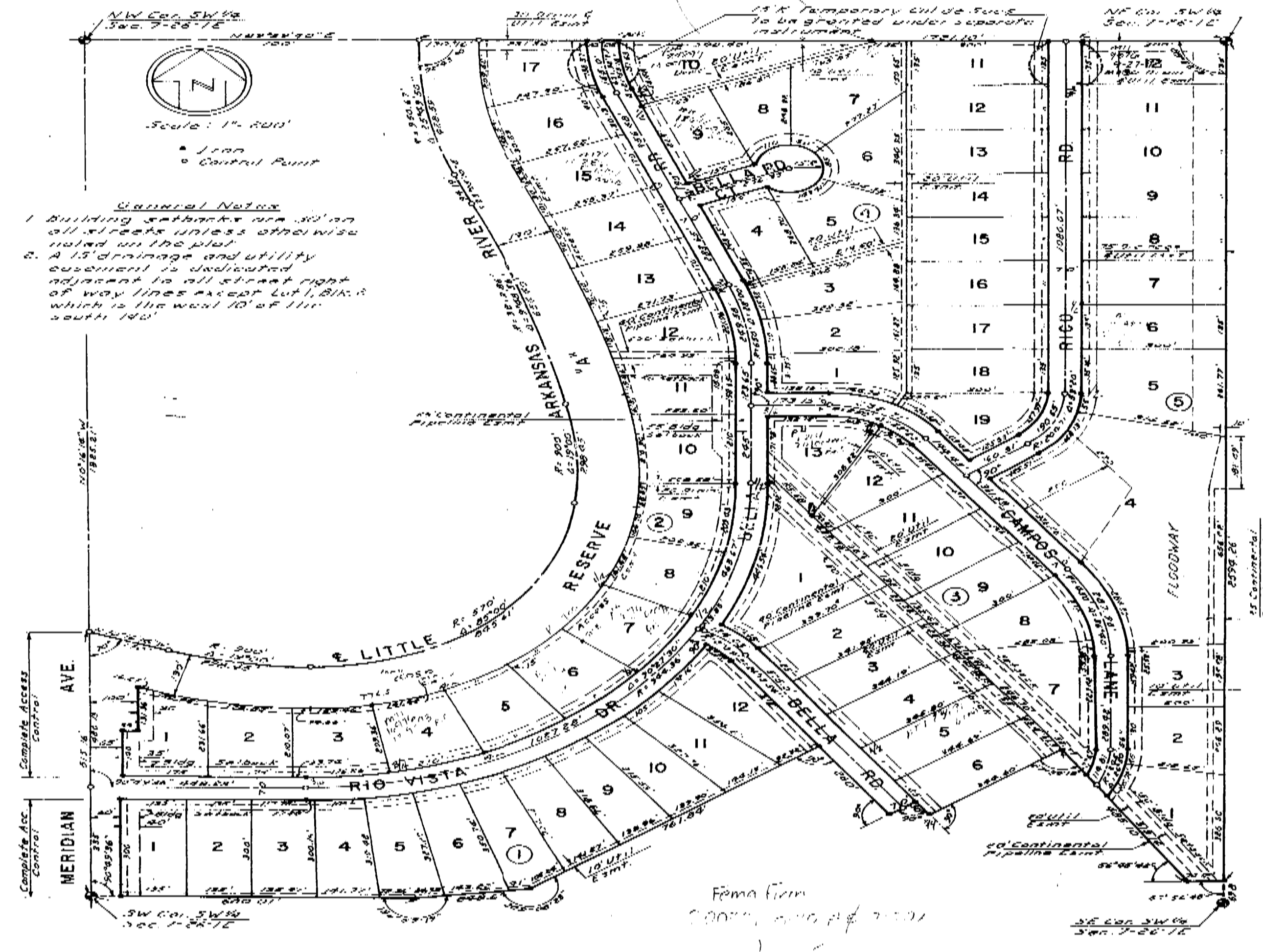


RIO VISTA ESTATES 2ND ADDITION
 SEDGWICK COUNTY, KANSAS

#413816



This plat of "RIO VISTA ESTATES 2ND ADDITION", Sedgwick County, Kansas, has been submitted to and approved by the Wichita-Sedgwick County Metropolitan Area Planning Commission, Wichita, Kansas, dated this 13th day of October, 1977.

Wichita-Sedgwick County Metropolitan Area Planning Commission
 Chairman: *Walter J. Schuler*
 Secretary: *Robert A. Fisher*

This plat approved and all dimensions shown herein accepted by the Board of County Commissioners, Sedgwick County, Kansas, this 22nd day of May, 1978.

State of Kansas, Sedgwick County, Kansas, this 22nd day of May, 1978.
 County Clerk: *John A. Peters*
 Deputy: *Donna J. Walker*

This plat approved and all dimensions shown herein accepted by the Board of County Commissioners, Sedgwick County, Kansas, this 22nd day of May, 1978.

Chairman: *Walter J. Schuler*
 Commissioner: *Walter J. Schuler*
 County Clerk: *John A. Peters*

Notary Public: *John A. Peters*
 State of Kansas, Sedgwick County, Kansas, this 22nd day of May, 1978.

Notary Public: *John A. Peters*
 State of Kansas, Sedgwick County, Kansas, this 22nd day of May, 1978.

State of Kansas, Sedgwick County, Kansas, this 22nd day of May, 1978. Before me, the undersigned, Notary Public, appeared the following persons, to-wit: *James H. Peterson*, *Walter J. Schuler*, *John A. Peters*, and *Donna J. Walker*, all of whom are known to me to be the persons whose names are subscribed to the foregoing instrument, and they acknowledged to me that they executed the same for the purposes and consideration therein expressed.

Notary Public: *John A. Peters*

Know all men by these presents that we, the undersigned, have caused the land described in this survey to be divided into lots, blocks, streets, and a reserve to be known as "RIO VISTA ESTATES 2ND ADDITION", Sedgwick County, Kansas. The boundaries are hereby granted as indicated for the construction and maintenance of public utilities. The streets are hereby dedicated to and for the use of the public. All duties, rights of access over and across the west line of Lot 18, Block 1, and the Floodway, shall be the responsibility of the owner of Lot 18, Block 1 in the subdivision until such time as the governing body exercising jurisdiction over the streets assume the responsibility for maintenance and improvement of the drainage, provided further that no building shall be erected on the west line of Lot 18, Block 1, or on the Floodway, or other work be carried on which would interfere with the drainage of the Reserve. Reserve A is hereby dedicated for drainage, river bank maintenance, flood control and river beautification.

James H. Peterson, Chairman
 Walter J. Schuler, Commissioner
 John A. Peters, County Clerk

State of Kansas, Sedgwick County, Kansas, this 22nd day of May, 1978. Before me, a Notary Public, appeared the following persons, to-wit: *James H. Peterson*, *Walter J. Schuler*, *John A. Peters*, and *Donna J. Walker*, all of whom are known to me to be the persons whose names are subscribed to the foregoing instrument, and they acknowledged to me that they executed the same for the purposes and consideration therein expressed.

Notary Public: *John A. Peters*

Notary Public: *John A. Peters*
 State of Kansas, Sedgwick County, Kansas, this 22nd day of May, 1978.

Notary Public: *John A. Peters*
 State of Kansas, Sedgwick County, Kansas, this 22nd day of May, 1978.

H-1 5-22 5-20

1009

1009
 H-1 5-22 5-20