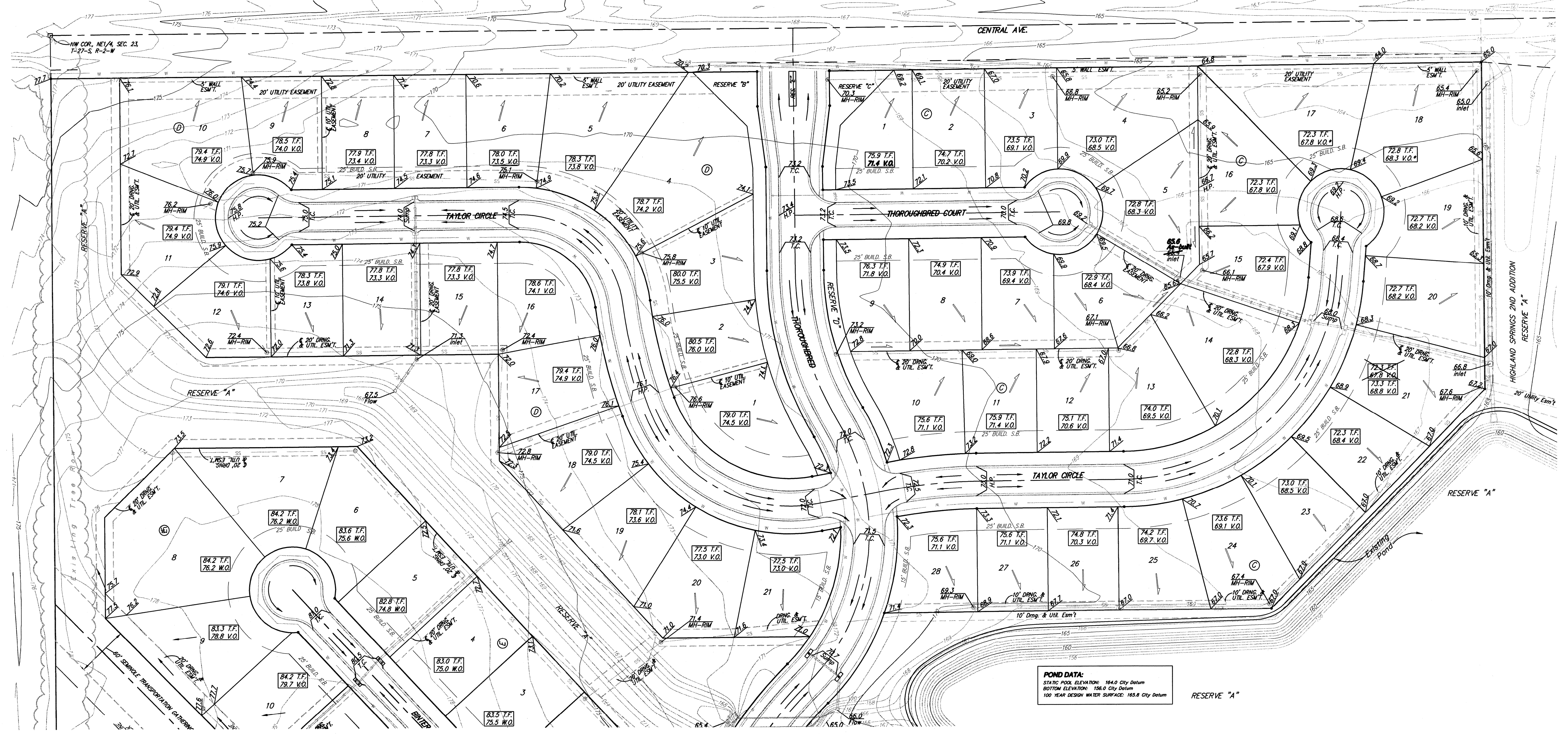
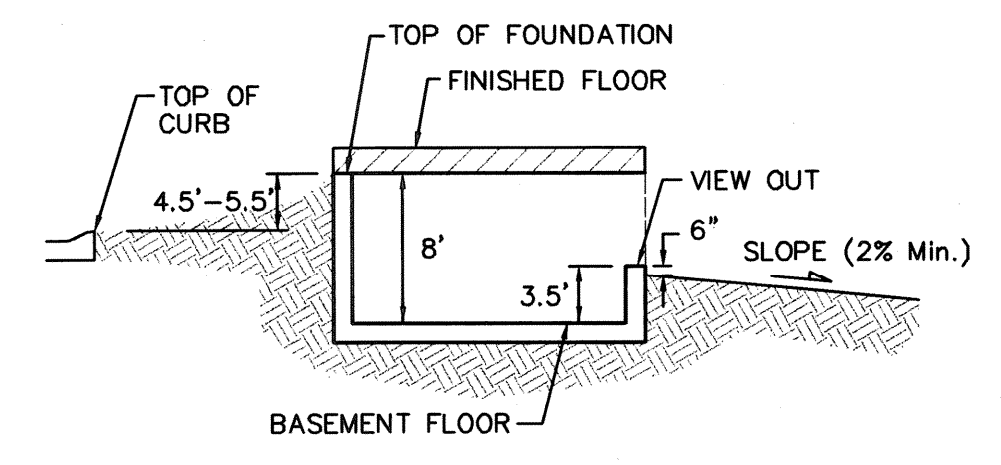


Scale: 1" = 60'  
 • = Iron



**POND DATA:**  
 STATIC POOL ELEVATION: 164.0 City Datum  
 BOTTOM ELEVATION: 156.0 City Datum  
 100 YEAR DESIGN WATER SURFACE: 165.8 City Datum



**TYPICAL VIEW OUT DETAIL**  
 NO SCALE

**NOTES:**  
 Proposed Top of Foundation Elevations Are Shown On Plans. Contractor to Set Finished Floor Elevations.

All Street Elevations Shown on Plans Are for Top of Curb (Full-Height).

This Grading Plan is Designed with View-Outs. Elevations Shown as (XX.X V.O.)

**BENCHMARKS:**  
 135th St. W. & Central  
 City of Wichita Benchmark  
 DISC - NE Cor. Intersection,  
 32.6' N. & 24.5' E. of C both.  
 39.5' NE of Iron at Sec. Cbr.  
 Elev. = 159.50 (City Datum)

Brass disc in curb - east side of Aksarben adjacent to fire hydrant 5'± South of SW Cor. Lot 8, Block A, Highland Springs 3rd Addition.  
 Elev. = 170.00 (City Datum)



Revised Lot 1, Block C Rev. Rear Yard Grades to match Wall 7/14/10 - AEG  
 Revised Lot 1, Block C Corrected V.O. Elev. (topographical error)

**Baughman** Highland Springs 3rd Addition  
**GRADING PLAN**  
 City of Wichita

Baughman Company, P.A. 315 Ellis St. Wichita, KS 67211 P 316262-7271 F 316262-0149  
 ENGINEERING | SURVEYING | PLANNING | LANDSCAPE ARCHITECTURE

REVISIONS	JAK	DESIGN	DRAWN
6/15/04	JAK	BLP/BLG	BLG
9/26/05	JAK	APPROVED	DATE
Revised back lots per as-built	JAK		17MAY02
9/05/07	JAK	SCALE	NOTED
Revised back lots grades, Lots 6-14, Block C	JAK		
5/30/08	DML	SHEET	
Revised T.F. & V.O. Elev., Lot 21, Block C			

F:\Grade\Highland\highland3\grade.dwg