

**BOUNDARY CLOSURE FOR LOUISE POWELL WSU BIOLOGY FIELD STATION ADDITION**  
**(36-08434-003-0044)**  
**(July 15, 2009)**

PNT #

200	North 10060 0000	East 11344 4660
	Line Course: S 90-00-00 E Length: 1320 2039	
201	North: 10060.0000	East: 12664.6699
	Line Course. N 01-00-25 E Length: 600.0927	
202	North. 10660 0000	East 12675.2157
	Line Course. N 90-00-00 W Length 1320.2039	
203	North- 10660.0000	East- 11355 0118
	Line Course: S 01-00-25 W Length: 600.0927	
200	North: 10060 0000	East: 11344.4660

Perimeter 3840.5931 Area 792,122 sq ft. 18.18 acres

Mapcheck Closure - (Uses listed courses, radii, and deltas)

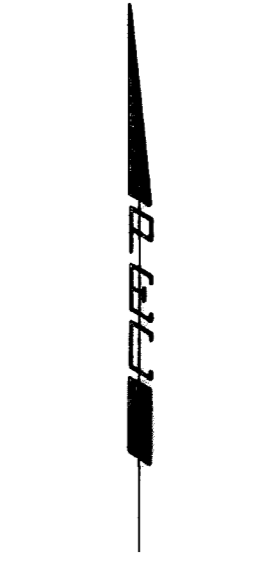
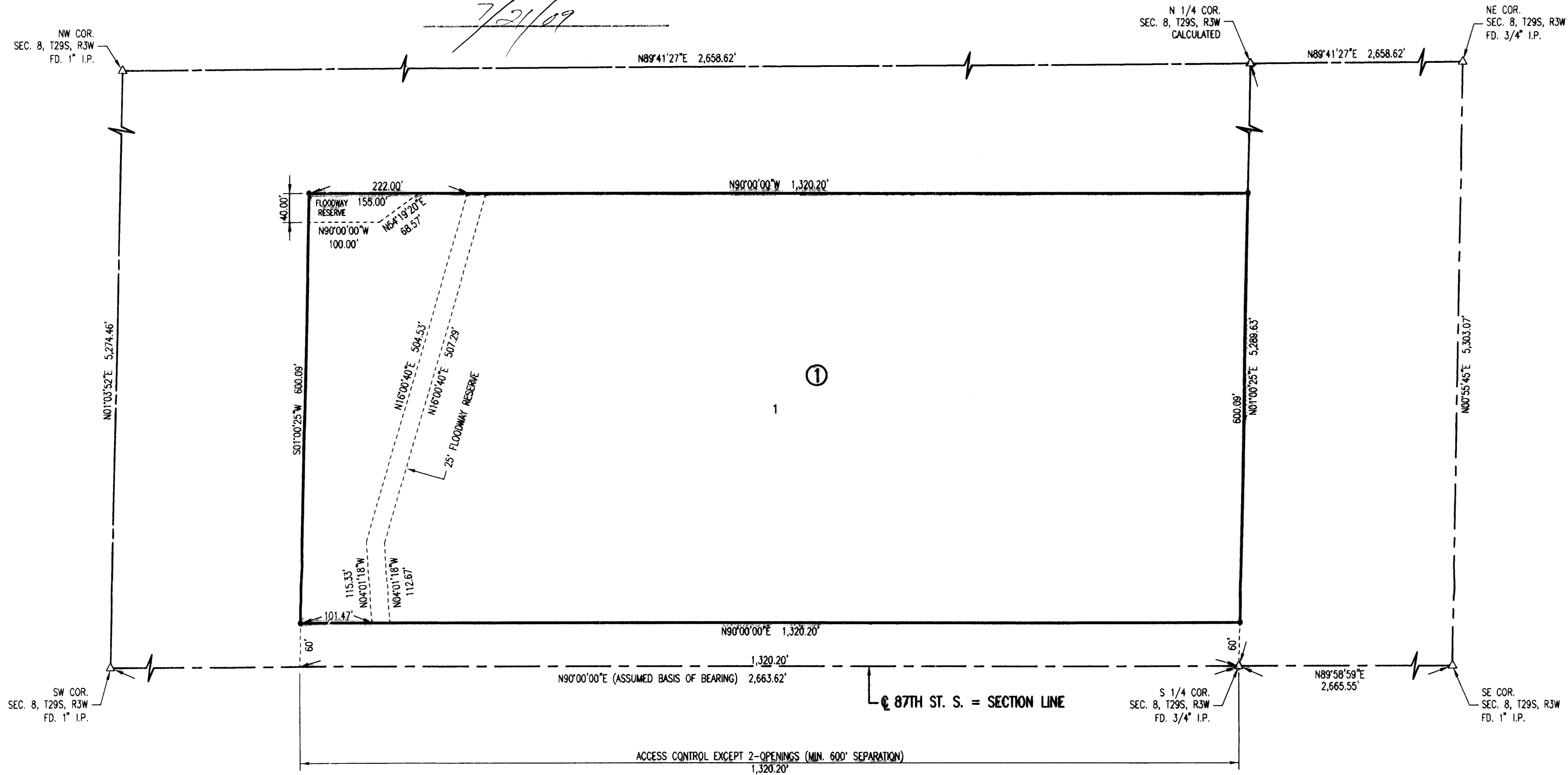
Error Closure: 0.0000	Course. S 90-00-00 E
Error North 0 00000	East - 0 00000
Precision 1. 3,840,593,200.0000	

# LOUISE POWELL WSU BIOLOGY FIELD STATION ADDITION

## AN ADDITION TO SEDGWICK COUNTY, KANSAS

FINAL TRACING RECORD

7/21/09



SCALE: 1" = 100'

- = #4 REBAR W/PEC CAP UNLESS OTHERWISE NOTED
- △ = SECTION CORNER

**BENCHMARKS:**

- BM D-312  
NGS DISK ON CONCRETE CYLINDER, PROJECTING 1.1' ABOVE GROUND, 40' +/- WEST AND 25' +/- SOUTH OF SOUTHEAST CORNER SEC. 8, T29S, R3W, 279TH ST. W. AND 87TH ST. S.  
ELEV. = 1309.58 NAVD88
- BM E-312  
NGS DISK ON CONCRETE CYLINDER, 35' WEST AND 87' NORTH OF SOUTHWEST CORNER SEC. 8, T29S, R3W, 295TH ST. W. AND 87TH ST. S.  
ELEV. = 1311.14 NAVD88
- BM 1  
600 STEP NAILS IN WEST FACE OF FENCE POST 30' NORTH AND 30' EAST OF SOUTH 1/4 CORNER SEC. 8, T29, R3W.  
ELEV. = 1320.13 NAVD88
- BM 2  
CHISELED "d" TOP OF NORTH HUBGUARD OF RCBC UNDER 87TH ST. S., 1,543' EAST OF SOUTH 1/4 CORNER SEC. 8, T29S, R3W.  
ELEV. = 1302.77 NAVD88
- BM 3  
RAILROAD SPIKE FLUSH WITH TOP-CENTER OF SOUTH WOODEN HEADWALL OF CULVERT UNDER 87TH ST. S., 488' EAST OF SOUTHWEST CORNER SEC. 8, T29S, R3W.  
ELEV. = 1313.53 NAVD88

STATE OF KANSAS )  
                          ) SS  
COUNTY OF SEDGWICK )

WE, PROFESSIONAL ENGINEERING CONSULTANTS, P.A., ENGINEERS AND SURVEYORS, IN AFORESAID STATE AND COUNTY, DO HEREBY CERTIFY THAT ON THIS 21<sup>ST</sup> DAY OF JULY, 2009, WE HAVE SURVEYED AND PLATTED LOUISE POWELL WSU BIOLOGY FIELD STATION ADDITION, AN ADDITION TO SEDGWICK COUNTY, KANSAS, INTO A LOT, A BLOCK, AND A RESERVE. THE SAME BEING DESCRIBED AS FOLLOWS:

THE SOUTH 660 FEET OF THE EAST 1,320 FEET OF THE SOUTHWEST QUARTER OF SECTION 8, TOWNSHIP 29 SOUTH, RANGE 3 WEST OF THE SIXTH PRINCIPAL MERIDIAN, SEDGWICK COUNTY, KANSAS.

ACCESS CONTROLS AS INDICATED ARE HEREBY GRANTED TO THE APPROPRIATE GOVERNING BODY AND SHALL BE IN ACCORDANCE WITH THE SEDGWICK COUNTY ACCESS MANAGEMENT STANDARDS.

KNOW ALL MEN BY THESE PRESENTS THAT WE, THE UNDERSIGNED PROPERTY OWNERS OF THE LAND AS ABOVE SET FORTH IN THE SURVEYOR'S CERTIFICATE, HAVE CAUSED THE LAND TO BE SURVEYED AND PLATTED INTO A LOT, A BLOCK, AND A RESERVE. THE SAME TO BE KNOWN AS LOUISE POWELL WSU BIOLOGY FIELD STATION ADDITION, AN ADDITION TO SEDGWICK COUNTY, KANSAS.

OWNER(S):  
WICHITA STATE UNIVERSITY FOUNDATION, A KANSAS NOT-FOR-PROFIT CORPORATION, FORMERLY KNOWN AS WICHITA STATE UNIVERSITY ENDOWMENT ASSOCIATION  
*Patsy Selby*  
PATSY SELBY, ASSISTANT TREASURER

STATE OF KANSAS )  
                          ) SS  
COUNTY OF SEDGWICK )

THIS INSTRUMENT WAS ACKNOWLEDGED BEFORE ME ON July 20, 2009, BY PATSY SELBY, ASSISTANT TREASURER.

*Deborah L. Buller*, NOTARY PUBLIC  
DEBORAH BULLER

MY APPOINTMENT EXPIRES:  
September 18, 2011  
Notary Public - State of Kansas  
DEBORAH L. BULLER  
My Appointment Expires 9/18/11

THIS PLAT OF LOUISE POWELL WSU BIOLOGY FIELD STATION ADDITION HAS BEEN SUBMITTED TO AND APPROVED BY THE WICHITA-SEGWICK COUNTY METROPOLITAN AREA PLANNING COMMISSION, WICHITA, KANSAS.

DATED THIS \_\_\_\_ DAY OF \_\_\_\_\_, 2009.

WICHITA-SEGWICK COUNTY METROPOLITAN AREA PLANNING COMMISSION

DARRELL DOWNING, CHAIR

JOHN L. SCHLEGEL, SECRETARY

REVIEWED IN ACCORDANCE WITH K.S.A. 58-2005 ON THIS \_\_\_\_ DAY OF \_\_\_\_\_, 2009.

THIS PLAT IS APPROVED AND ALL DEDICATIONS SHOWN HEREON, IF ANY, ARE ACCEPTED BY THE BOARD OF COUNTY COMMISSIONERS OF SEDGWICK COUNTY, KANSAS, THIS \_\_\_\_ DAY OF \_\_\_\_\_, 2009.

KELLY PARKS, CHAIRMAN

KELLY B. ARNOLD, COUNTY CLERK

ENTERED ON TRANSFER RECORD THIS \_\_\_\_ DAY OF \_\_\_\_\_, 2009.

KELLY B. ARNOLD, COUNTY CLERK

THIS IS TO CERTIFY THAT THIS INSTRUMENT WAS FILED FOR RECORD IN THE REGISTER OF DEEDS OFFICE AT \_\_\_\_ A.M. - P.M., ON THE \_\_\_\_ DAY OF \_\_\_\_\_, 2009.

BILL MEEK, REGISTER OF DEEDS

TONYA BUCKINGHAM, DEPUTY

TRICIA L. ROBELLO, LS #1246  
DEPUTY COUNTY SURVEYOR  
SEGWICK COUNTY KANSAS



JAMES R. BECKETT, R.L.S. NO. 832  
PROFESSIONAL ENGINEERING CONSULTANTS, P.A.

THE FLOODWAYS SHALL BE THE RESPONSIBILITY OF THE RESPECTIVE OWNER OF LOT 1, BLOCK 1, UNTIL SUCH TIME AS THE GOVERNING BODY EXERCISING JURISDICTION ELECTS TO ASSUME THE RESPONSIBILITY FOR THE MAINTENANCE AND IMPROVEMENT OF THE FLOODWAY. PROVIDED FURTHER THAT NO STRUCTURES SHALL BE CONSTRUCTED ON OR WITHIN SAID FLOODWAY, NOR SHALL ANY FILL, CHANGE OF GRADE, CREATION OF CHANNEL OR OTHER WORK BE CARRIED ON WITHOUT THE PERMISSION OF THE APPROPRIATE ENGINEER.

A DRAINAGE PLAN HAS BEEN APPROVED FOR THIS PLAT. ALL DRAINAGE EASEMENTS, RESERVES, AND RIGHTS-OF-WAY SHALL REMAIN AT ESTABLISHED GRADES AND UNOBSTRUCTED TO ALLOW FOR THE CONVEYANCE OF STORMWATER, UNLESS MODIFIED WITH THE APPROVAL OF THE COUNTY ENGINEER.

Saved: 07-15-2009 10:47:52 AM by ABE  
Plot Scale: 1:100 07-15-2009 10:49:32 AM  
C:\2009\08464\003\08464-003.dwg