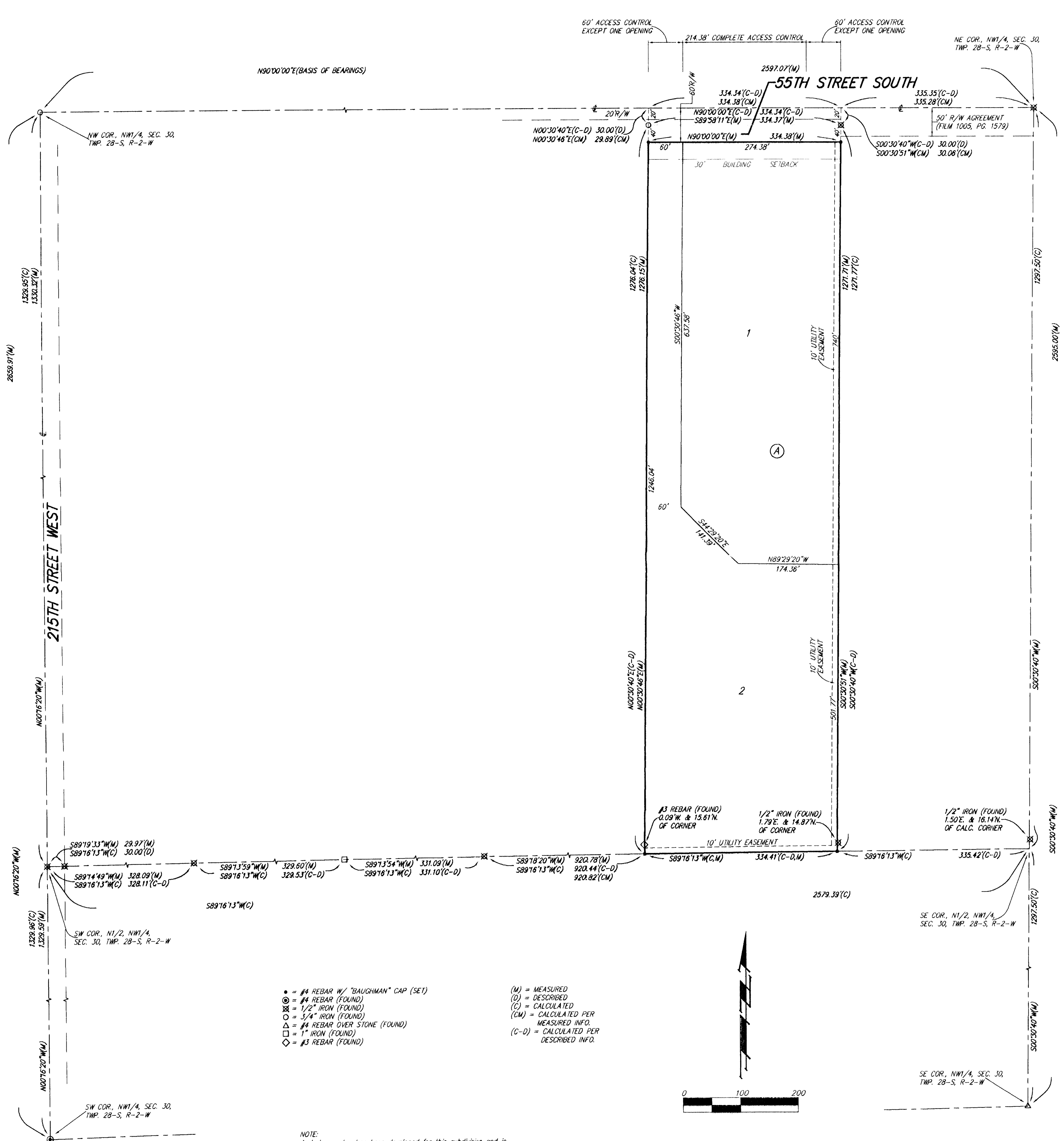


LOGAN ACRES

SEDGWICK COUNTY, KANSAS



- = #4 REBAR W/ "BAUGHMAN" CAP (SET)
- ⊙ = #4 REBAR (FOUND)
- ⊗ = 1/2" IRON (FOUND)
- ⊕ = 3/4" IRON (FOUND)
- △ = #4 REBAR OVER STONE (FOUND)
- = 1" IRON (FOUND)
- ◇ = #3 REBAR (FOUND)
- (M) = MEASURED
- (D) = DESCRIBED
- (C) = CALCULATED
- (CM) = CALCULATED PER MEASURED INFO.
- (C-D) = CALCULATED PER DESCRIBED INFO.

NOTE:
A drainage plan has been developed for this subdivision and is on file in the office of the County Engineer or the Engineer for the appropriate governing body. Drainage intent shall remain as depicted or as modified with the approval of the County Engineer or the Engineer for the appropriate governing body. No obstructions which impede the flow of this drainage plan shall be allowed.

NOTE:
EXISTING BLANKET RIGHT-OF-WAY EASEMENT FOR THE BENEFIT OF THE SEDGWICK COUNTY ELECTRIC COOPERATIVE ASSOCIATION, INC. OVER THE NW/2 OF THE NW/4 OF SEC. 30, TWP. 28-S, R-2-W, (MISC. BOOK 147, PAGE 75).

State of Kansas) SS We, Baughman Company, P.A., Surveyors in Sedgwick County) do hereby certify that we have surveyed and platted "LOGAN ACRES", Sedgwick County, Kansas and that the accompanying plat is a true and correct exhibit of the property surveyed, described as the west 334.33 feet of the east 669.67 feet of the NW/2 of the NW/4 of Section 30, Twp. 28-S, R-2-W of the 6th P.M., Sedgwick County, Kansas, except the north 30 feet thereof reserved for road purposes.

Existing public easements and dedications being vacated by virtue of K.S.A. 12-512(b).

Baughman Company, P.A.

Michael G. Conrey
Michael G. Conrey, Surveyor

Know all men by these presents that we, the undersigned, have caused the land in the surveyors certificate to be platted into Lots, a Block, and a Street, to be known as "LOGAN ACRES", Sedgwick County, Kansas. The utility easements are hereby granted as indicated for the construction and maintenance of all public utilities. The street is hereby dedicated to and for the use of the public. Access controls shall be as depicted on the face of the plat and are hereby granted to the appropriate governing body.

Win-Win Investments, Inc.
Chad Dean
Chad Dean, President

State of Kansas) SS The foregoing instrument acknowledged before me, this 31st day of MAY, 2005, by Chad Dean, President of Win-Win Investments, Inc., on behalf of the corporation.

SUSAN K. MONETTE
Notary Public - State of Kansas
My Appt. Expires 12-7-07
Susan K. Monette
SUSAN K. MONETTE, Notary Public
My App't. Exp. 11-9-07

We the undersigned holders of a mortgage on the above described property, do hereby consent to this plat of "LOGAN ACRES", Sedgwick County, Kansas.

The Citizens State Bank of Cheney
Logan Brown
Logan Brown, Pres.

State of Kansas) SS The foregoing instrument acknowledged before me, this 1st day of June, 2005, by Roger Brown, President of The Citizens State Bank of Cheney, on behalf of the bank.

DIANE L. GIESWEIN
Notary Public - State of Kansas
My Appt. Expires 5-19-09
Diane L. Gieswein
DIANE L. GIESWEIN, Notary Public
My App't. Exp. 5-19-09

This plat of "LOGAN ACRES", Sedgwick County, Kansas has been submitted to and approved by the Wichita-Sedgwick County Metropolitan Area Planning Commission, Wichita, Kansas.

Dated this _____ day of _____, 2005.
Wichita-Sedgwick County Metropolitan Area Planning Commission

_____, Chair
Morris K. Dunlap
_____, Secretary
John L. Schlegel

This plat approved and all dedications shown hereon accepted by the Board of Commissioners of Sedgwick County, Kansas, this _____ day of _____, 2005.

_____, Chairman
David Unruh
ATTEST: _____, County Clerk
Don Brace

Reviewed in accordance with K.S.A. 58-2005 on this _____ day of _____, 2005.

Tricia L. Robello, L.S. #1246
Deputy County Surveyor
Sedgwick County, Kansas

Entered on transfer record this _____ day of _____, 2005.

_____, County Clerk
Don Brace

State of Kansas) SS This is to certify that this plat has been filed for record in the office of the Register of Deeds, this _____ day of _____, 2005 at _____ o'clock _____ M.; and is duly recorded.

_____, Register of Deeds
Bill Meek
_____, Deputy
Tonya Buckingham

Baughman Company, P.A.
315 5th St., Wichita, KS 67211 P 316.262.7211 F 316.262.0149
Baughman ENGINEERING | SURVEYING | PLANNING | LANDSCAPE ARCHITECTURE
PLAT LOGAN ACRES SUBD. LOGAN ACRES SEDGWICK CO. KANSAS