

12/21/17

# LINWOOD ACRES 2nd ADDITION WICHITA, SEDGWICK COUNTY, KANSAS

Part of the SW 1/4, Section 22, Township 27 South, Range 2 East of the 6th P.M.

State of Kansas )  
County of Sedgwick ) ss

State of Kansas )  
City of Wichita ) ss

I, Randall L. Elkins, a licensed land surveyor of the State of Kansas, do hereby certify that the following described tract of land was surveyed on the 18th day of September, 2007 and the accompanying final plat prepared and that all the monuments shown herein actually exist and their positions are correctly shown to the best of my knowledge and belief:

This plat of Linwood Acres 2nd Addition, Wichita, Sedgwick County, Kansas, has been submitted to and approved by the Wichita-Sedgwick County Metropolitan Area Planning Commission, Wichita, Kansas. Dated this \_\_\_\_\_ day of 2007. Wichita-Sedgwick County Metropolitan Area Planning Commission.

Lot 1, Linwood Acres, Sedgwick County, Kansas.

M.S. Mitchell, Chairman

Being situated in the SW 1/4 of Sec. 22, Twp. 27-S, R-2-E of the 6th P.M., Sedgwick County, Kansas.

John L. Schlegel, Secretary

Parcel contains 0.91 acres ±.

State of Kansas )  
City of Wichita ) ss

All easements and rights-of-way within said lots are hereby vacated by virtue of KSA 12-512(b) amended.

This plat approved and all dedications shown hereon accepted by the City Council of the City of Wichita, Kansas, this \_\_\_\_\_ day of \_\_\_\_\_, 2007.

At the Direction of the City Council

Carl Brewer, Mayor

Karen Sublett, City Clerk

Randall L. Elkins, L.S. #1294 date

State of Kansas )  
County of Sedgwick ) ss

Know all men by these presents, that we, the undersigned, have caused the land described in the surveyor's certificate to be platted into lots and a block to be known as Linwood Acres 2nd Addition, Wichita, Sedgwick County, Kansas. Any easements are hereby granted as indicated for constructing, maintaining, operating, and repairing public utilities. A drainage plan has been developed for the plat and all drainage easements, or rights-of-way, shall remain at established grades or as modified with the approval of the applicable City or County Engineer, and unobstructed to allow for the conveyance of stormwater. And further that the land contained herein is held and shall be conveyed subject to any applicable restrictions, reservations and covenants now on file or hereafter filed in the Office of the Register of Deeds of Sedgwick County, Kansas.

Entered on transfer record this \_\_\_\_\_ day of \_\_\_\_\_, 2007.

Donald Brace, County Clerk

By: Dennis Niedens 12-13-07  
Dennis Niedens, Owner date

State of Kansas )  
County of Sedgwick ) ss

This is to certify that this plat has been filed for record in the Office of the Register of Deeds this \_\_\_\_\_ day of \_\_\_\_\_, 2007, at \_\_\_\_\_ o'clock \_\_\_\_\_ M; and is duly recorded.

Bill Meek, Register of Deeds

State of Kansas )  
County of Sedgwick ) ss

This instrument was acknowledged before me on this 13<sup>th</sup> day of December, 2007, by Dennis Niedens.

Tonya Buckingham, Deputy

By: Joanne Doris Swanland  
Notary Public  
My Commission Expires: 12-16-09

Reviewed in accordance with K.S.A. 58-2005 on this 17<sup>th</sup> day of December, 2007.

By: Tricia L. Robinson  
Deputy County Surveyor  
Sedgwick County, Kansas

We, Kanza Bank, N.A., holders of a mortgage on the above described property, do hereby consent to the plat of Linwood Acres 2nd Addition, Wichita, Sedgwick County, Kansas.

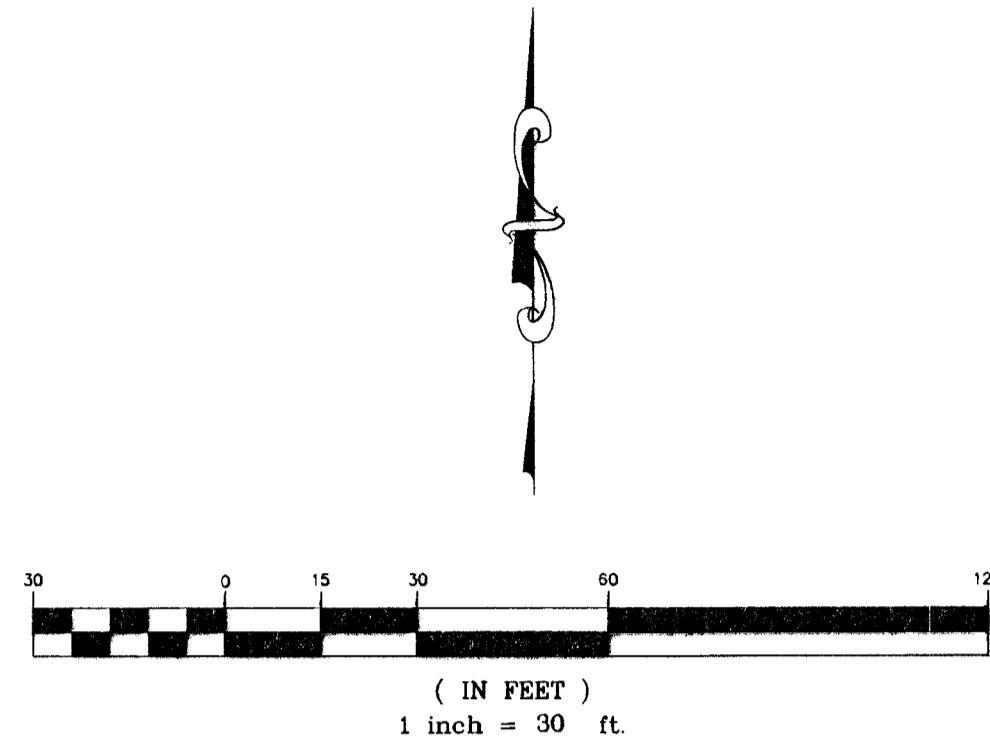
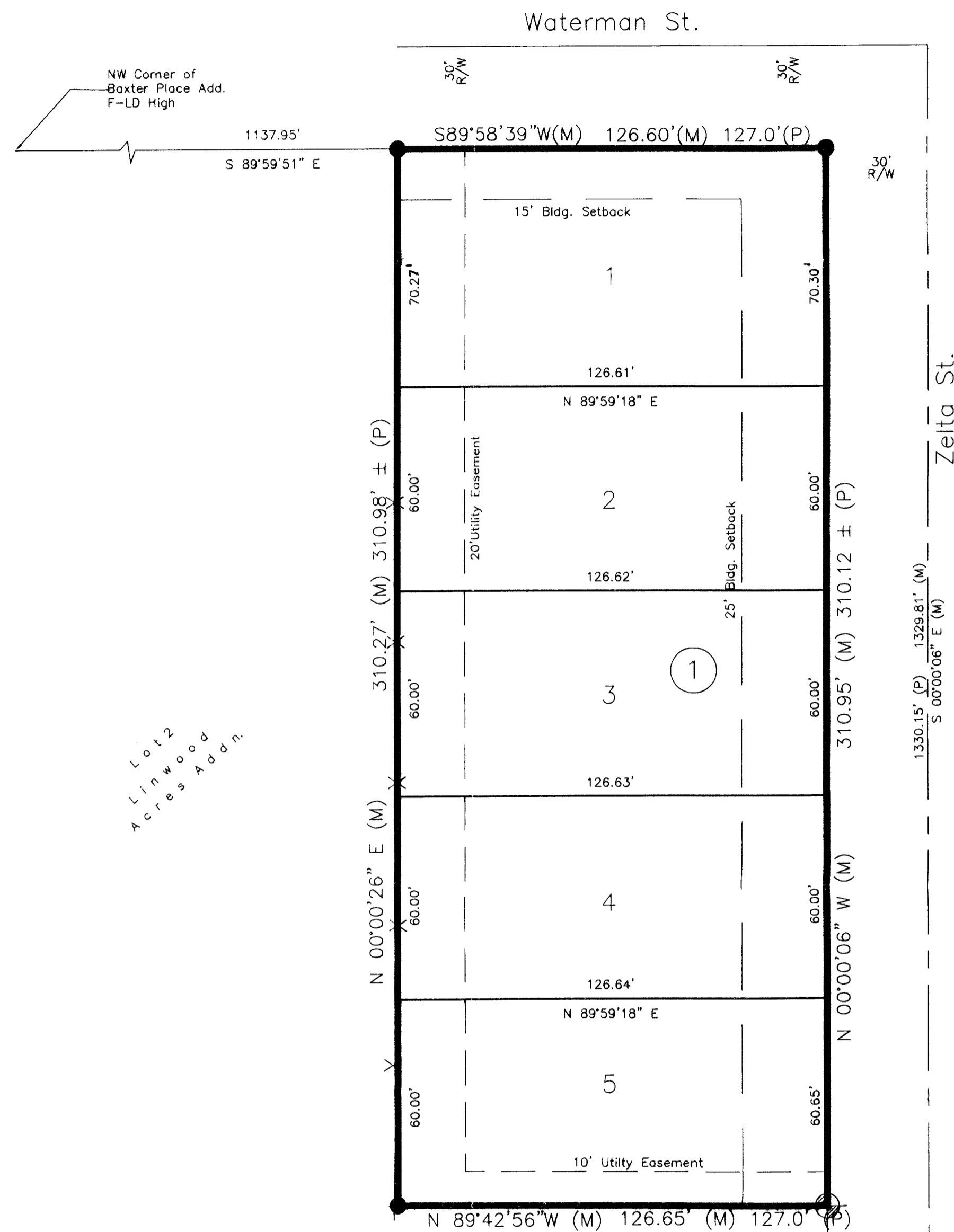
By: Max White, SVP 12-13-07  
Date

State of Kansas )  
County of Sedgwick ) ss

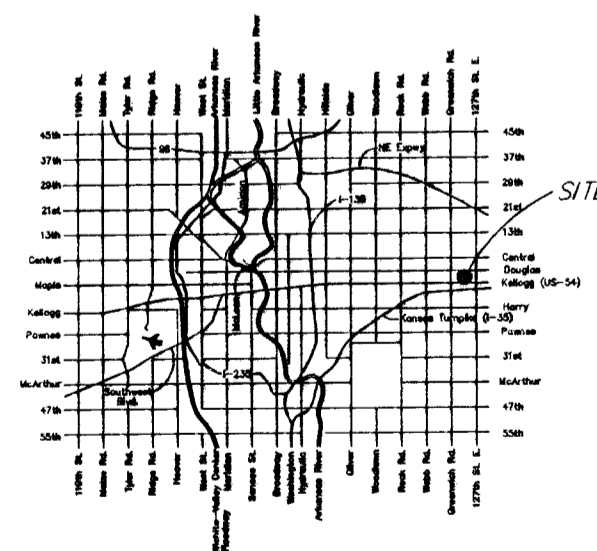
This instrument was acknowledged before me on this 13 day of December, 2007, by Max White, SVP.

By: Ashley Clinesmith  
Notary Public  
My Commission Expires: October 7, 2011

Filename: 07124 Alan Williams Plat.dwg\Alan Williams preim plat.dwg



- Fire Hydrant
- Light Pole
- Pine Tree
- Power Pole
- Telephone Pedestal
- Tree
- Water Meter
- Water Valve
- RW Marker (found)
- 1/2" Iron Pin (found)
- 5/8" Rebar (set) RLS #1294



LOCATION MAP

Lewis St.

NEW Corner of Lot 41 Baxter Place Add. F-LD High

SE Cor. of the SW 1/4 Sec. 22, Twp. 27 S, Rng. 2E, 6th P.M.

Lot 1  
Linwood Acres Addn.

Lot 1  
Linwood Acres Addn.