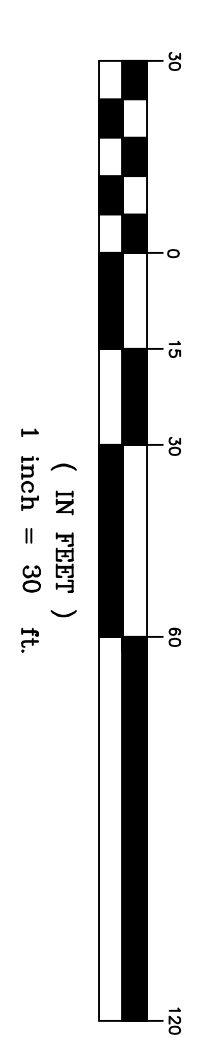
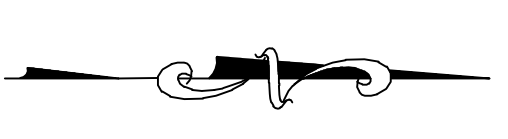
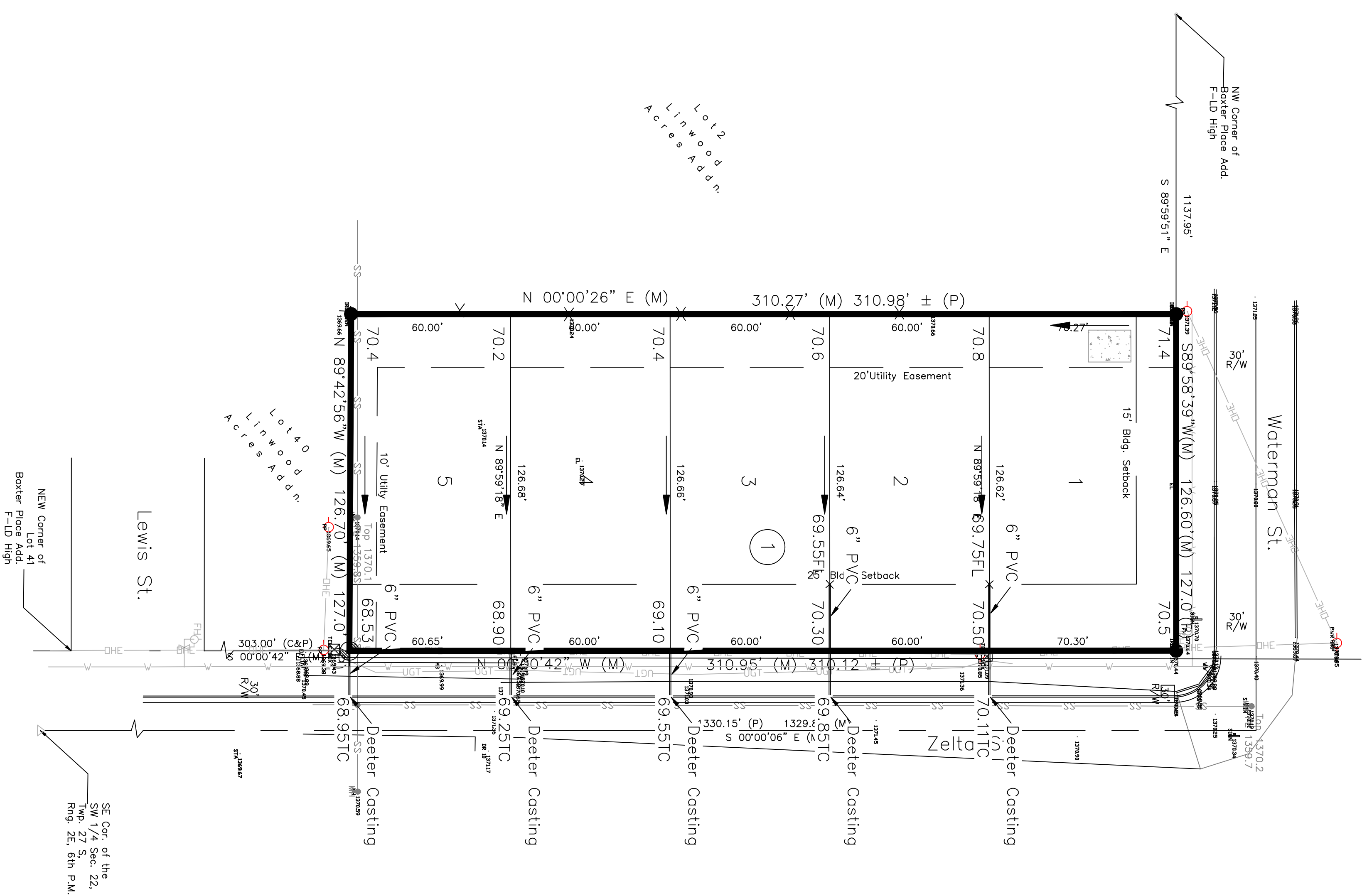
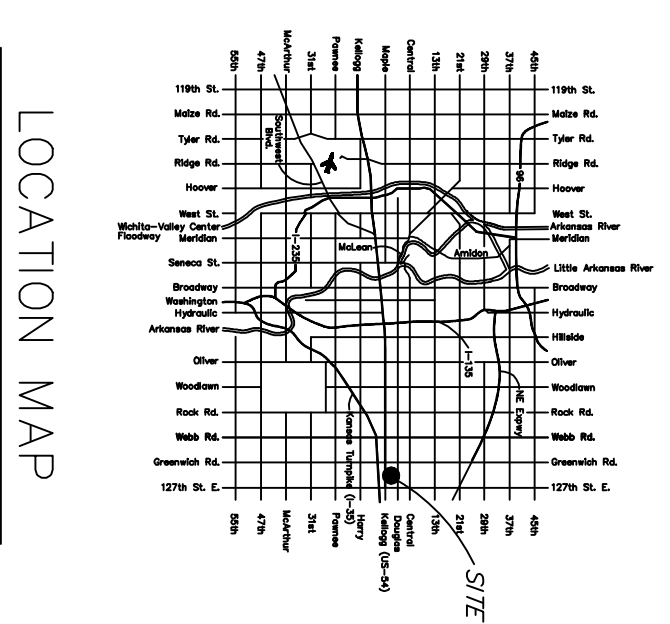


**LOT GRADING PLAN
LINWOOD ACRES 2nd ADDITION
WICHITA, SEDGWICK COUNTY, KANSAS**

Part of the SW 1/4, Section 22, Township 27 South, Range 2 East of the 6th P.M.



- LEGEND**
- Fire Hydrant
 - ⊙ Light Pole
 - ⊙ Pine Tree
 - ⊙ Power Pole
 - ⊙ Telephone Pedestal
 - Tree
 - Water Meter
 - Water Valve
 - RW Marker (found)
 - 1/2" Iron Pin (found)
 - ⊙ 5/8" Rebar (set) KEMPA CUS #157



*Benchmark:
COW Bench mark 32' West a 39' North of Centerline of Zelta
and Douglas Intersection.
Elev. 1357.29 MSL*