

**ONE-STEP PLAT OF
LINWOOD ACRES 2nd ADDITION
WICHITA, SEDGWICK COUNTY, KANSAS**

Part of the SW 1/4, Section 22, Township 27 South, Range 2 East of the 6th P.M.

State of Kansas)
County of Sedgwick) SS

I, Randall L. Elkins, a licensed land surveyor of the State of Kansas, do hereby certify that the following described tract of land was surveyed on the 18th day of September, 2007 and the accompanying final plat prepared and that all the monuments shown herein actually exist and their positions are correctly shown to the best of my knowledge and belief:

Lot 1, Linwood Acres, Sedgwick County, Kansas.

Being situated in the SW 1/4 of Sec. 22, Twp. 27-S, R-2-E of the 6th P.M., Sedgwick County, Kansas.

Parcel contains 0.91 acres ±.

All easements and rights-of-way within said lots are hereby vacated by virtue of KSA 12-512(b) amended:

State of Kansas)
City of Wichita) SS

This plat of Linwood Acres 2nd Addition, Wichita, Sedgwick County, Kansas, has been submitted to and approved by the Wichita-Sedgwick County Metropolitan Area Planning Commission, Wichita, Kansas. Dated this ___ day of 2007. Wichita-Sedgwick County Metropolitan Area Planning Commission.

Darrell A. Dawning, Chairman

John L. Schlegel, Secretary

State of Kansas)
City of Wichita) SS

This plat approved and all dedications shown hereon accepted by the City Council of the City of Wichita, Kansas, this ___ day of ___, 2007.

At the Direction of the City Council

Carl Brewer, Mayor

Karen Sublett, City Clerk

Entered on transfer record this ___ day of ___, 2007.

Donald Broeze, County Clerk

State of Kansas)
County of Sedgwick) SS

This is to certify that this plat has been filed for record in the Office of the Register of Deeds this ___ day of ___, 2007, at ___ o'clock ___ M., and is duly recorded.

Bill Meek, Register of Deeds

Tonya Buckingham, Deputy

Reviewed in accordance with K.S.A. 58-2005 on this ___ day of ___, 2007.

Tricia L. Robello, L.S. #1246
Deputy County Surveyor
Sedgwick County, Kansas

By: _____ date _____
Dennis Neidens, Owner

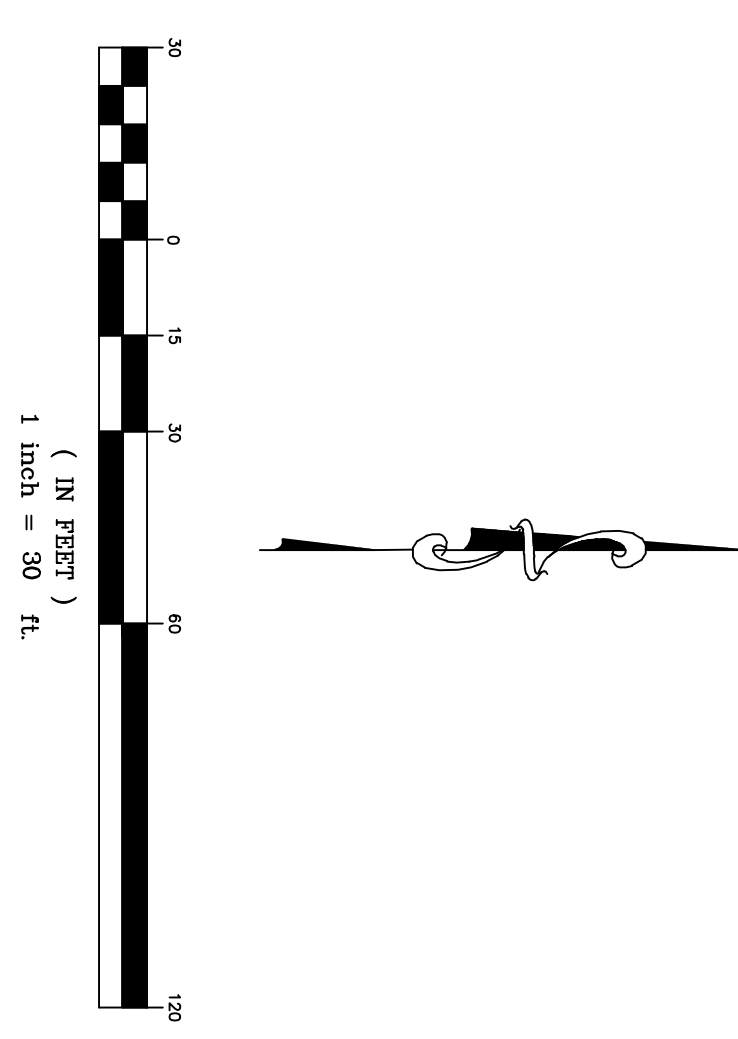
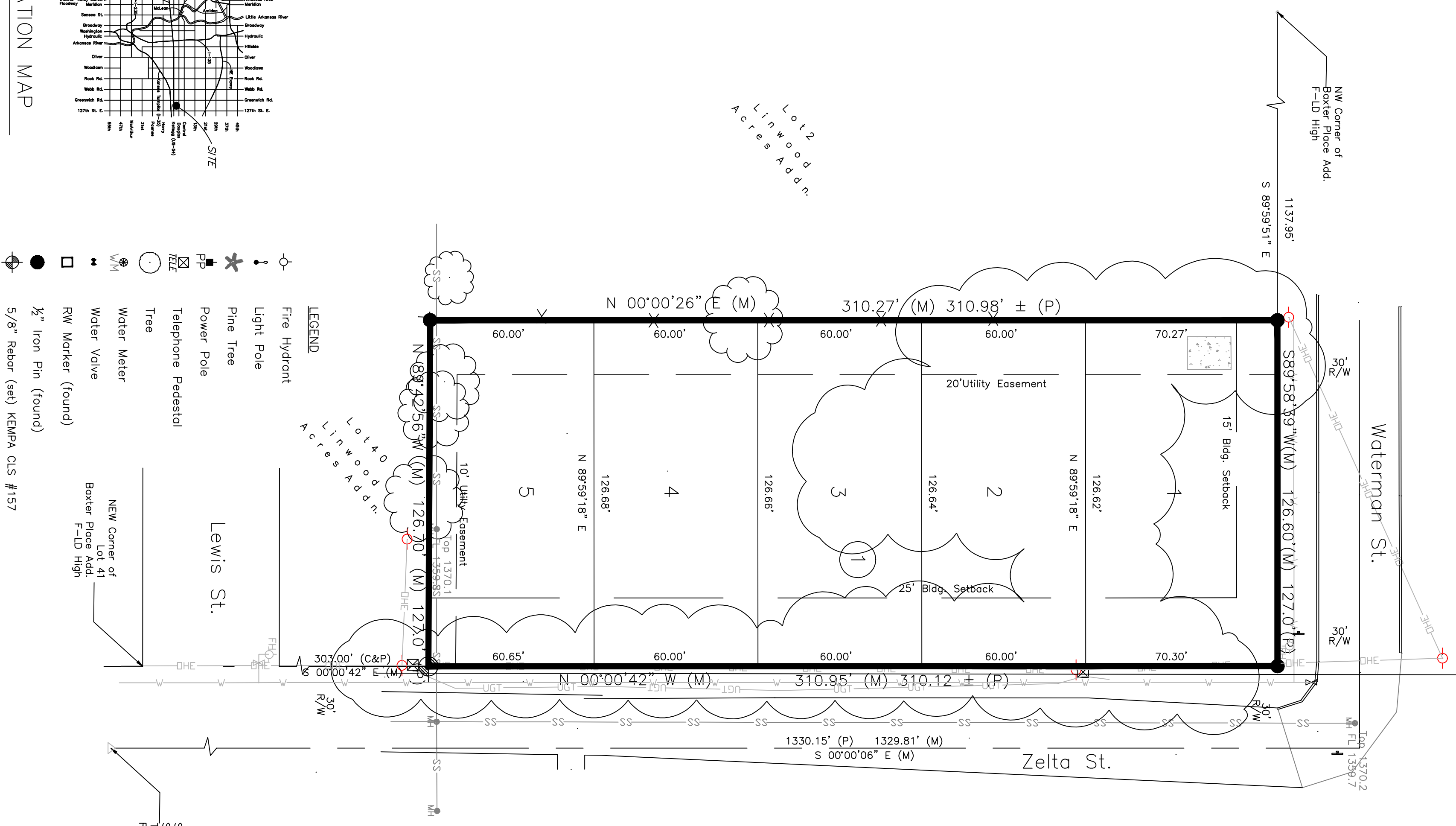
State of Kansas)
County of Sedgwick) SS
This instrument was acknowledged before me on this ___ day of ___, 2007, by Dennis Neidens.

Notary Public
My Commission Expires: _____

We, 22222 Bark, N.A., holders of a mortgage on the above described property, do hereby consent to the plat of Allen Williams Addition, Wichita, Sedgwick County, Kansas.

By: _____ Date _____
State of Kansas)
County of Sedgwick) SS
This instrument was acknowledged before me on this ___ day of ___, 2007, by _____.

Notary Public
My Commission Expires: _____



Benchmark:
COW Bench mark 32' West a 38' North of Centerline of Zelta
and Douglas Intersection.
Elev. 1357.29 MSL

Filename: 0724 Allen Williams Plat/Lang/Ken Williams form plat.dwg

kemiller
engineering

518 S. Market, Wichita, KS 67202 316/264-0242