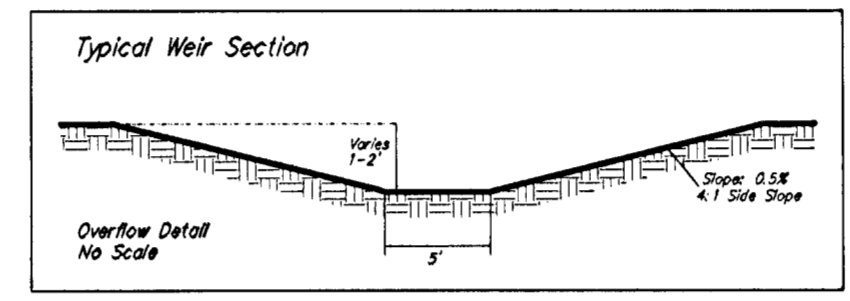
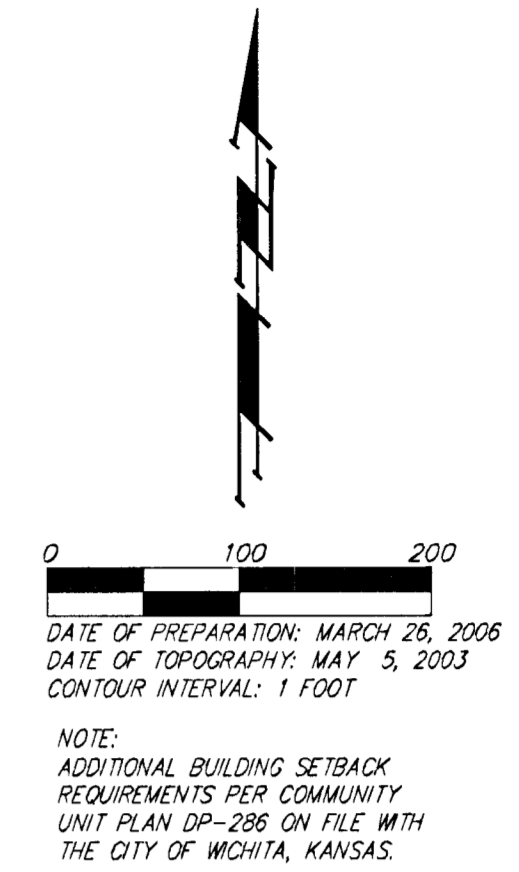
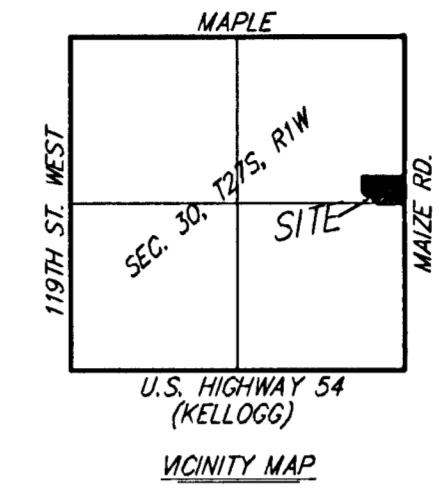


DRAINAGE & GRADING PLAN
LILLIE 2ND ADDITION
 WICHITA, SEDGWICK COUNTY, KANSAS

WEST BASIN AREA = 8.3 acres	
EXISTING CN = 69 Tc = 15 min Q ₂ = 9.3 cfs Q ₁₀ = 22 cfs Q ₁₀₀ = 44 cfs	DEVELOPED CN = 92 Tc = 15 min Q ₂ = 27 cfs Q ₁₀ = 42 cfs Q ₁₀₀ = 66 cfs



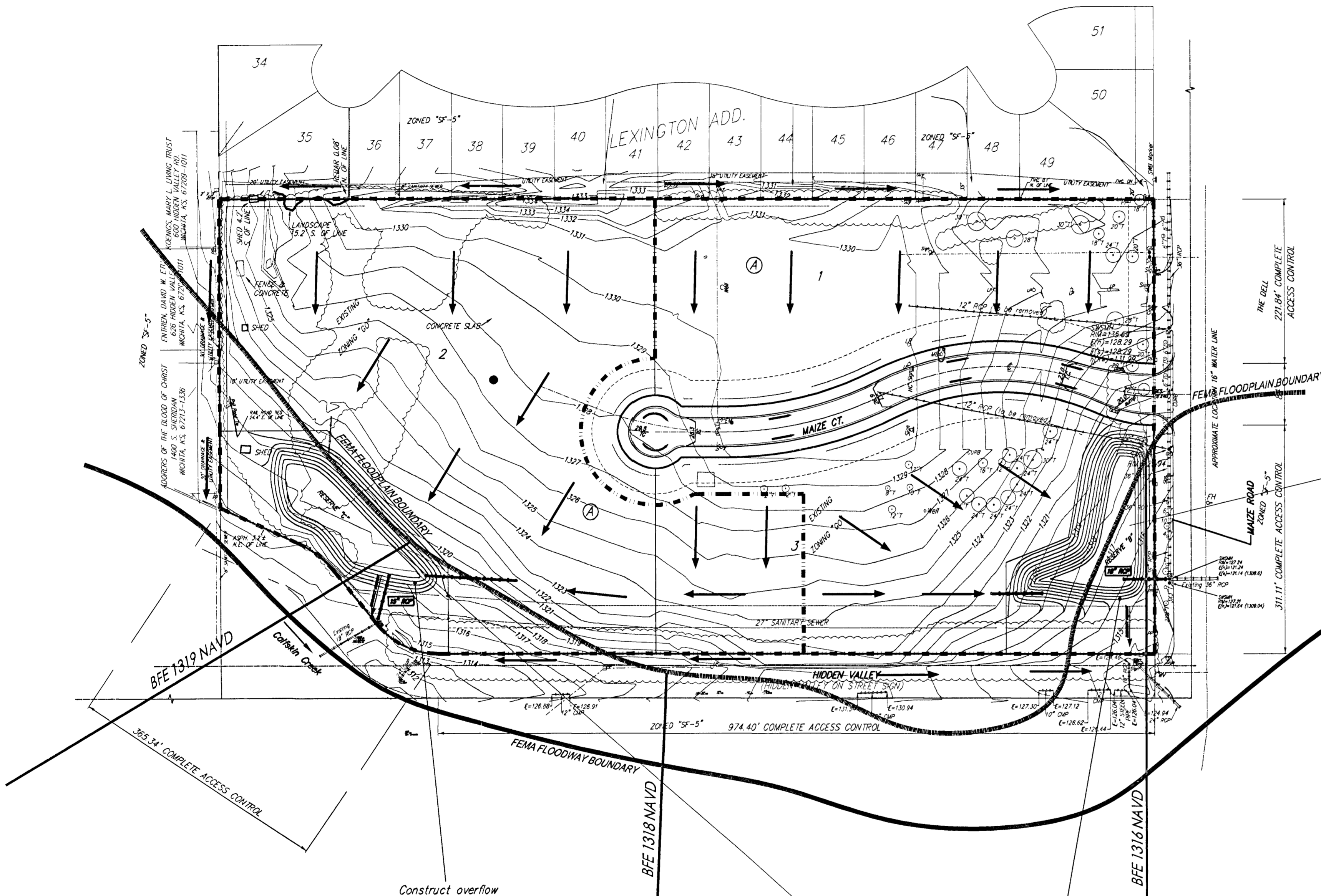
- = #4 BAUGHMAN REBAR (SET)
- = 3/4" IRON PIPE IN THIMBLE (FOUND)
- = 1/2" IRON PIPE IN THIMBLE (FOUND)
- = 3/8" SQUARE REBAR (FOUND)
- = #4 REBAR W/ "SIB" CAP (FOUND)
- = #4 REBAR W/ "ARMSTRONG" CAP (FOUND)
- = #4 REBAR W/ "PDE" CAP (FOUND)
- = #4 REBAR (FOUND)

OWNER/DEVELOPER:
 PHYSICIANS DEVELOPMENT, LLC
 & MATT LILLIE
 7200 W. 13TH ST. SUITE #5
 WICHITA, KS 67212
 PH: (316) 773-5600

BENCHMARK:
 CITY OF WICHITA BENCHMARK DISC -
 MAIZE ROAD & MCCORMICK (HIDDEN VALLEY)
 0.5 MI. S. OF MAIZE ON THE NE CORNER
 OF R.C.B.C. OVER CONSKIN CREEK,
 SOUTH OF HIDDEN VALLEY
 ELEV. = 1318.93 NGVD29

- (M) = MEASURED
- (D) = DESCRIBED
- (P) = PLATTED
- (C) = CALCULATED
- (C-P) = CALCULATED PER PLATTED INFO
- (C-D) = CALCULATED PER DESCRIBED INFO

MINIMUM BUILDING PAD ELEVATIONS FOR LOWEST OPENING TO THE STRUCTURES		
LOT	BLOCK	ELEVATION MSL
2,3	A	1319.5



STAGE	INFLOW	OUTFLOW	ELEVATION
2 ft	28 cfs	11 cfs	1313.4
10 ft	48 cfs	14 cfs	1318.8
100 ft	11 cfs	18 cfs	1318.4

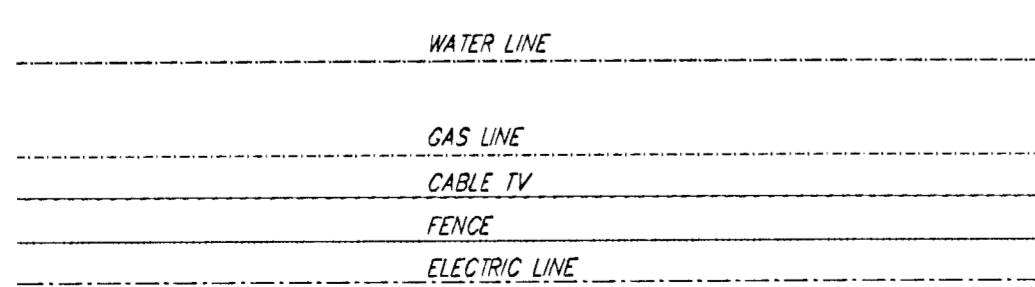
ELEVATION	AREA (acres)
1311	8,200
1312	17,000
1313	18,100
1314	18,500
1315	18,500
1316	18,500
1317	18,500

EAST BASIN AREA = 9.0 acres	
EXISTING CN = 69 Tc = 15 min Q ₂ = 10 cfs Q ₁₀ = 24 cfs Q ₁₀₀ = 48 cfs	DEVELOPED CN = 92 Tc = 15 min Q ₂ = 29 cfs Q ₁₀ = 46 cfs Q ₁₀₀ = 71 cfs

STAGE	INFLOW	OUTFLOW	ELEVATION
3 ft	27 cfs	17 cfs	1317.7
10 ft	42 cfs	17 cfs	1318.7
100 ft	66 cfs	37 cfs	1317.5

ELEVATION	AREA (acres)
1313.5	11,900
1314	12,000
1315	15,800
1316	18,820
1317	20,200
1318	20,200

- CB = Catch Basin
- EM = Electric Meter
- FP = Flag Pole
- GM = Gas Meter
- QA = Guy Anchor
- JB = Electrical Junction Box
- LP = Light Pole
- MB = Mail Box
- RD = Roof Drain
- PP = Power Pole
- SP = Sign
- SSM = Stormwater Sewer Manhole
- W = Cased Well
- WV = Water Valve
- FI = Fire Hydrant



NOTE:
 FEMA FLOODPLAIN BOUNDARY SCALED PER LOCATION
 PER FEMA FIRM PANEL 340 OF 700 FOR SEDGWICK
 COUNTY, KANSAS, MAP NUMBER 2003210340E
 EFFECTIVE FEBRUARY 2, 2007.

DRAINAGE & GRADING PLAN
LILLIE 2ND ADDITION
 26 MARCH 2007

Baughman Company, P.A.
 315 E 10th St., Wichita, KS 67211 P 316-262-7111 F 316-262-0149
 Baughman ENGINEERING | SURVEYING | PLANNING | LANDSCAPE ARCHITECTURE
 F:\PLAT\LILLIE2\LONG\LILLIE2.DWG-MCC