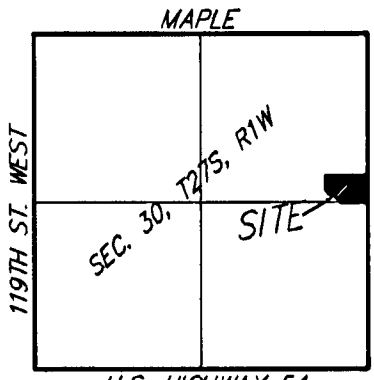


UTILITY PLAN LILLIE 2ND ADDITION WICHITA, SEDGWICK COUNTY, KANSAS

OWNER/DEVELOPER:
PHYSICIANS DEVELOPMENT, LLC
% WAT LILLIE
7200 W. 13TH ST. SUITE #5
WICHITA, KS 67212
PH. (316) 773-5600



- = #4 BAUGHMAN REBAR (SET)
- = 3/4" IRON PIPE IN THIMBLE (FOUND)
- = 1/2" IRON PIPE IN THIMBLE (FOUND)
- ⊗ = 3/8" SQUARE REBAR (FOUND)
- ⊗ = #4 REBAR W/ "SRB" CAP (FOUND)
- ⊗ = #4 REBAR W/ "ARMSTRONG" CAP (FOUND)
- ⊗ = #4 REBAR W/ "TDC" CAP (FOUND)
- ⊗ = #4 REBAR (FOUND)

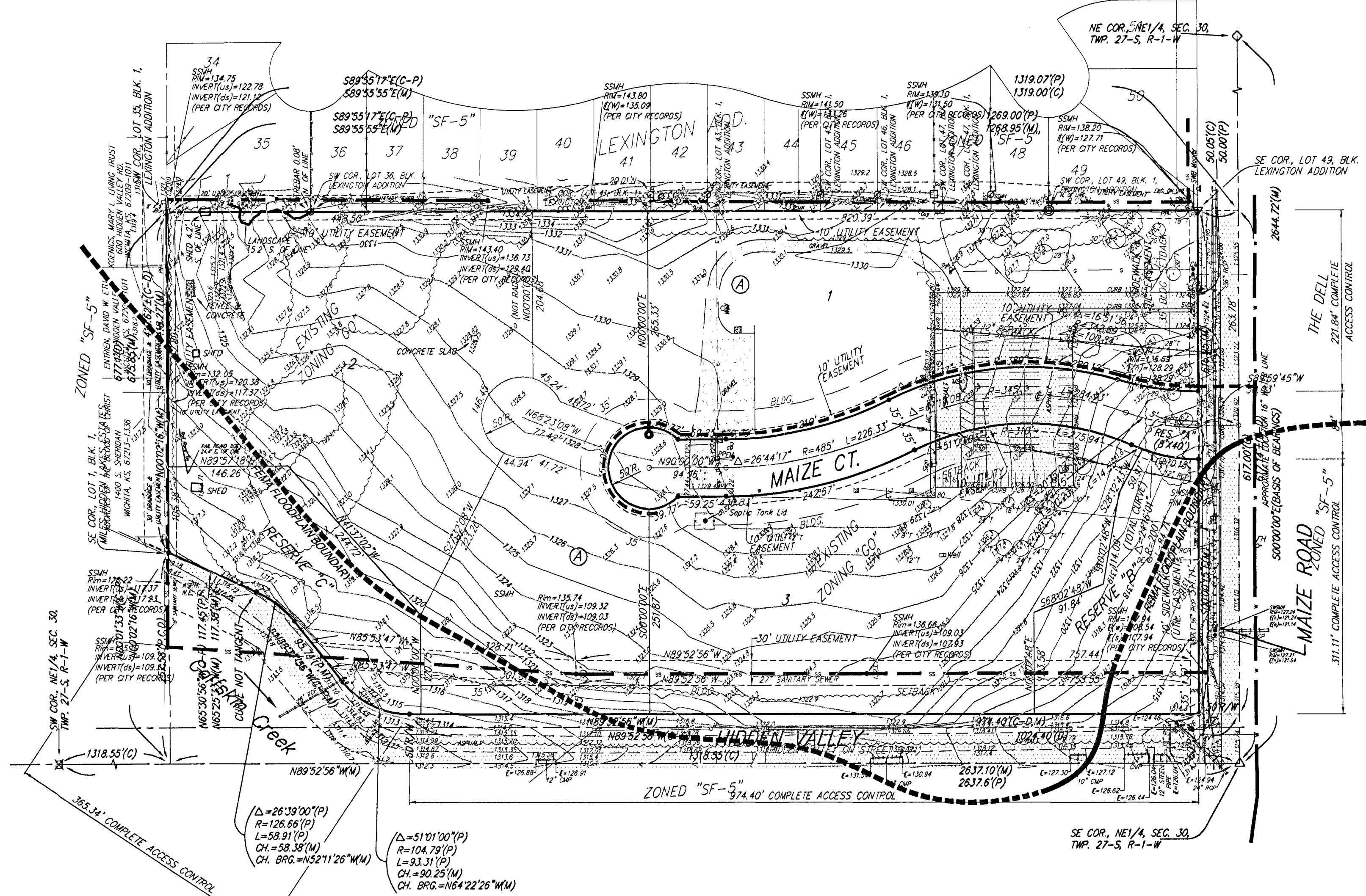
MINIMUM BUILDING PAD ELEVATIONS FOR LOWEST OPENING TO THE STRUCTURES		
LOT	BLOCK	ELEVATION
2,3	A	1322.0

0 100 200
DATE OF PREPARATION: MARCH 26, 2006
DATE OF TOPOGRAPHY: MAY 5, 2003
CONTOUR INTERVAL: 1 FOOT

NOTE:
ADDITIONAL BUILDING SETBACK REQUIREMENTS PER COMMUNITY UNIT PLAN DP-206 ON FILE WITH THE CITY OF WICHITA, KANSAS.

- (M) = MEASURED
- (D) = DESCRIBED
- (P) = PLATED
- (C) = CALCULATED
- (C-P) = CALCULATED PER PLATED INFO.
- (C-D) = CALCULATED PER DESCRIBED INFO.

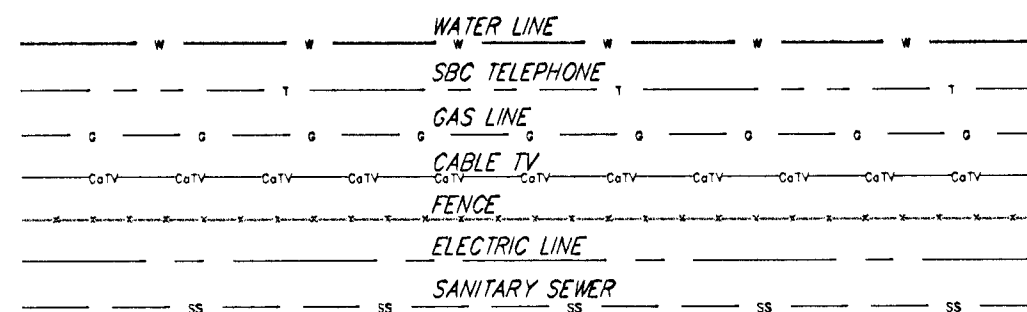
BENCHMARK:
CITY OF WICHITA BENCHMARK DISC - MAIZE ROAD & MCCORMICK (HIDDEN VALLEY)
0.5 MI. S. OF MAPLE ON THE NE CORNER OF R.C.B.C. OVER CONSON CREEK, SOUTH OF HIDDEN VALLEY
ELEV. = 1318.93 NGVD29



LEGEND

- Proposed Water Line (8" Unless Noted Otherwise)
- - - Existing Water Line (8" Unless Noted Otherwise)
- Proposed Sanitary Sewer Line (8" Unless Noted Otherwise)
- - - Existing Sanitary Sewer Line (8" Unless Noted Otherwise)
- Proposed Sanitary Sewer Manhole
- ♀ Proposed Fire Hydrant
- FL=XXXX.XX Proposed Sanitary Sewer Flow

- CB = Catch Basin
- CO = Cleanout
- EM = Electric Meter
- FP = Flag Pole
- GM = Gas Meter
- GA = Guy Anchor
- EJ = Electrical Junction Box
- LP = Light Pole
- MB = Mail Box
- RD = Roof Drain
- PP = Power Pole
- SP = Sign
- SSM = Sanitary Sewer Manhole
- SWB = Southwestern Bell Pedestal
- SSWM = Stormwater Sewer Manhole
- WC = Cased Well
- WV = Water Valve
- FH = Fire Hydrant



NOTE:
FEMA FLOODPLAIN BOUNDARY SCALED PER LOCATION PER FEMA FIRM PANEL 340 OF 700 FOR SEDGWICK COUNTY, KANSAS. MAP NUMBER 200610140K. EFFECTIVE FEBRUARY 2, 2007.

NOTE:
A DRAINAGE PLAN HAS BEEN DEVELOPED FOR THIS SUBDIVISION AND IS ON FILE WITH THE CITY OF WICHITA, KANSAS. DRAINAGE INTENT SHALL REMAIN AS DEPICTED OR AS MODIFIED WITH THE APPROVAL OF THE CITY ENGINEER OF THE CITY OF WICHITA, KANSAS. NO OBSTRUCTIONS WHICH IMPEDE THE FLOW OF THIS DRAINAGE PLAN SHALL BE ALLOWED.

LILLIE 2ND ADDITION
26 MARCH 2007

Baughman Company, P.A.
315 Ella St. Wichita, KS 67211 P 316.262.7271 F 316.262.0149
ENGINEERING | SURVEYING | PLANNING | LANDSCAPE ARCHITECTURE

P:\PLAT\LILLIE2ND\LILLIE2ND-DWG-002