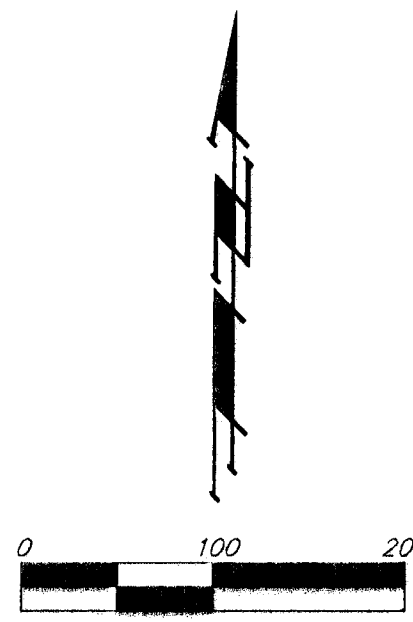


FINAL TRACING REC'D

# LILLIE 2ND ADDITION WICHITA, SEDGWICK COUNTY, KANSAS



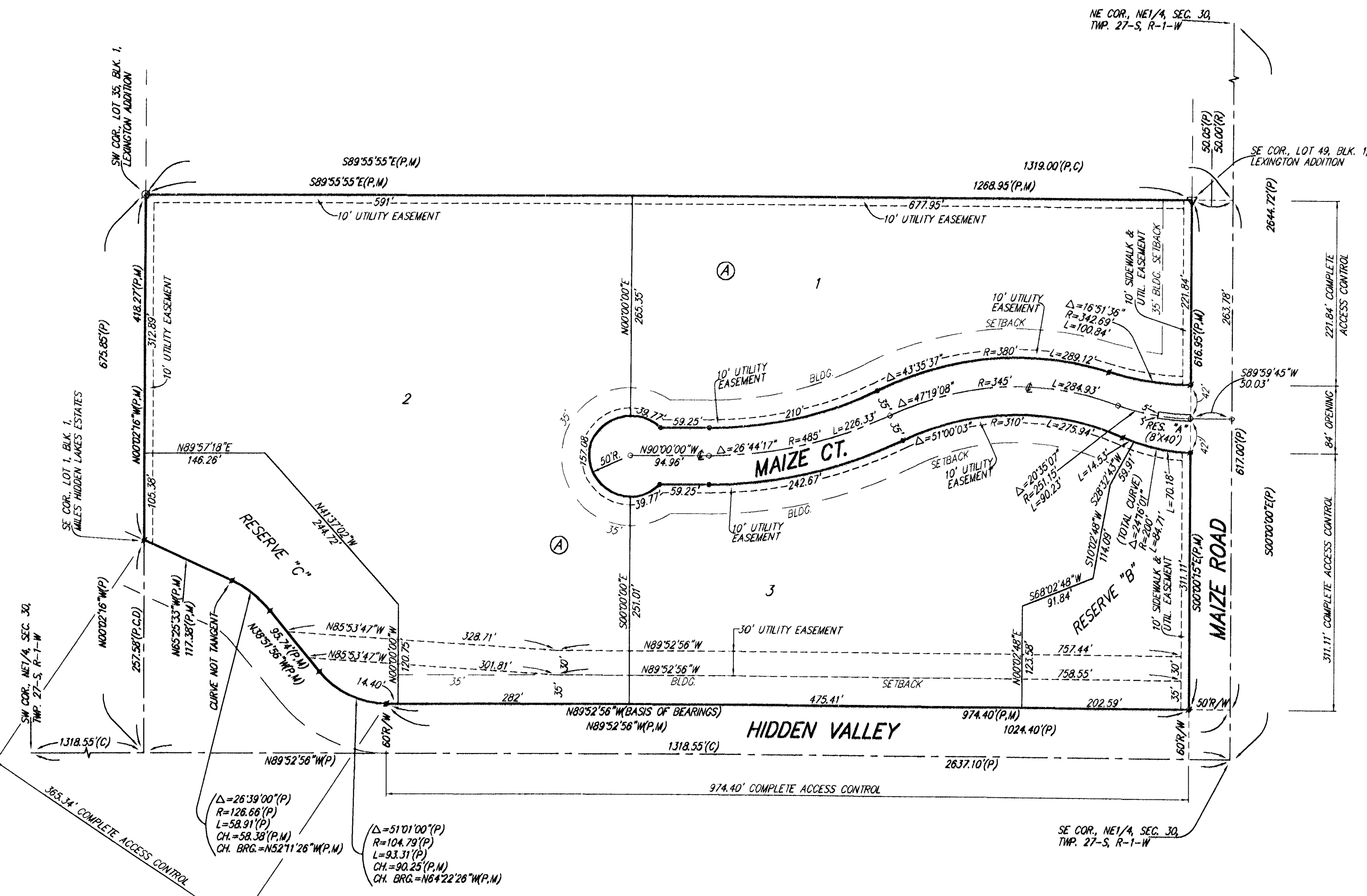
- = #4 REBAR W/ "BAUGHMAN" CAP (SET)
- = #4 REBAR W/ "BAUGHMAN" CAP (FOUND)
- = #4 REBAR W/ "SRB" CAP (FOUND)
- ▽ = #4 REBAR W/ "PDE" CAP (FOUND)

LOT	BLOCK	ELEVATION
2, 3	A	1322.0

- (M) = MEASURED
- (D) = DESCRIBED
- (P) = PLATTED
- (C) = CALCULATED
- (R) = RECORD MEASUREMENT
- (C-P) = CALCULATED PER PLATTED INFO.
- (C-D) = CALCULATED PER DESCRIBED INFO.

BENCHMARK:  
CITY OF WICHITA BENCHMARK DISC -  
MAIZE ROAD & HIDDEN VALLEY  
0.5 MI. S. OF MAPLE ON THE NE CORNER  
OF R.C.B.C. OVER CONKIN CREEK,  
SOUTH OF HIDDEN VALLEY  
ELEV. = 1318.93 NGVD29

NOTE:  
ADDITIONAL BUILDING SETBACK  
REQUIREMENTS PER COMMUNITY  
UNIT PLAN DP-288 ON FILE WITH  
THE CITY OF WICHITA, KANSAS



State of Kansas) SS  
Sedgwick County) We, Baughman Company, P.A., Surveyors in  
aforesaid county and state do hereby certify that we have surveyed and  
platted "LILLIE 2ND ADDITION", Wichita, Sedgwick County, Kansas and that  
the accompanying plat is a true and correct exhibit of the property  
surveyed, described as and being a replat of all of Lots 1, 2, and 3,  
Block A, together with all of Reserves "A", "B", and "C", and together with  
all of Maize Ct., all as platted and dedicated in Lillie Addition, Wichita,  
Sedgwick County, Kansas.

All being situated in the NE 1/4 of Sec. 30, Twp. 27-S, R-1-W,  
Sedgwick County, Kansas.

Existing public easements and dedications being  
vacated by virtue of K.S.A. 12-512(b).

Baughman Company, P.A.

This plat of "LILLIE 2ND ADDITION", Wichita,  
Sedgwick County, Kansas has been submitted to and approved by the  
Wichita-Sedgwick County Metropolitan Area Planning Commission, Wichita,  
Kansas.

Dated this \_\_\_\_\_ day of \_\_\_\_\_, 2007.  
Wichita-Sedgwick County Metropolitan Area Planning Commission

\_\_\_\_\_, Chair  
Darrell A. Downing

\_\_\_\_\_, Secretary  
John L. Schlegel

Michael D. Conrey  
Michael G. Conrey  
Surveyor  
5/3/2007

This plat approved and all dedications  
shown hereon accepted by the City Council of the City of Wichita,  
Kansas, this \_\_\_\_\_ day of \_\_\_\_\_, 2007.

\_\_\_\_\_, Mayor  
Carl Brewer

\_\_\_\_\_, City Clerk  
Karen Sublett

Know all men by these presents that we,  
the undersigned, have caused the land in the surveyors certificate to be  
platted into Lots, a Block, a Street, and Reserves to be known as "LILLIE  
2ND ADDITION", Wichita, Sedgwick County, Kansas. The utility easements  
are hereby granted as indicated for the construction and maintenance of  
all public utilities. The sidewalk and utility easements are hereby granted  
as indicated for the construction and maintenance of public sidewalks and  
for the construction and maintenance of all public utilities. The street is  
hereby dedicated to and for the use of the public. Reserve "A" is hereby  
reserved for streets, entry monuments, open space, utilities, and  
landscaping. Reserve "B" is hereby reserved for lakes, landscaping,  
drainage purposes, entry monuments, signage, sidewalks, and utilities as  
confined to easements. Reserve "C" is hereby reserved for lakes,  
landscaping, drainage purposes, and utilities as confined to easements.  
Reserves "A", "B", and "C" shall be owned and maintained by the lot  
owners association for the addition. Access controls shall be as depicted  
on the face of the plat and are hereby granted to the City of Wichita,  
Kansas. The Minimum Building Pad Elevation for the lowest opening to  
the structures shall be as indicated on the face of the plat.

Physicians Development, L.L.C.,  
a Kansas limited liability company

Gregory F. Lakin, O.D., J.D., Co-Manager/Member

Matthew J. Lillie, Co-Manager/Member

Reviewed in accordance with K.S.A. 58-2005  
on this \_\_\_\_\_ day of \_\_\_\_\_, 2007.

Tricia L. Robello, L.S. #1246  
Deputy County Surveyor  
Sedgwick County, Kansas

Entered on transfer record this \_\_\_\_\_ day  
of \_\_\_\_\_, 2007.

\_\_\_\_\_, County Clerk  
Don Brace

We, the undersigned holders of a mortgage on the  
above described property, do hereby consent to this plat of "LILLIE 2ND  
ADDITION", Wichita, Sedgwick County, Kansas.

Travis Boles, Commercial Loan Officer

State of Kansas) SS  
Sedgwick County) The foregoing instrument acknowledged before  
me, this 17th day of May, 2007, by Travis Boles,  
Comm. Loan Officer of Central National Bank, on behalf of the bank.

Barbara J. Rice, Notary Public

My App't. Exp. 4-10-2010

State of Kansas) SS  
Sedgwick County) The foregoing instrument acknowledged before  
me, this 17th day of May, 2007, by Gregory F. Lakin, O.D., J.D.,  
Co-Manager/Member of Physicians Development, L.L.C., a Kansas limited  
liability company, on behalf of the limited liability company.

Barbara J. Rice, Notary Public

My App't. Exp. 4-10-2010

State of Kansas) SS  
Sedgwick County) The foregoing instrument acknowledged before  
me, this 17th day of May, 2007, by Matthew J. Lillie,  
Co-Manager/Member of Physicians Development, L.L.C., a Kansas limited  
liability company, on behalf of the limited liability company.

Barbara J. Rice, Notary Public

My App't. Exp. 4-10-2010

State of Kansas) SS  
Sedgwick County) This is to certify that this plat has been  
filed for record in the office of the Register of Deeds, this \_\_\_\_\_ day  
of \_\_\_\_\_, 2007 at \_\_\_\_\_ o'clock \_\_\_\_\_ M; and is duly recorded.

\_\_\_\_\_, Register of Deeds  
Bill Meek

\_\_\_\_\_, Deputy  
Tonya Buckingham

## LILLIE 2ND ADDITION

Baughman Company, P.A.  
315 Elm St. Wichita, KS 67211 P 316-262-7271 F 316-262-0149  
Baughman ENGINEERING SURVEYING PLANNING LANDSCAPE ARCHITECTURE  
F:\PLAT\LILLIE2\DWG\LILLIE2.DWG-MCC

NOTE:  
A DRAINAGE PLAN HAS BEEN DEVELOPED FOR THIS SUBDIVISION AND IS  
ON FILE WITH THE CITY OF WICHITA, KANSAS. DRAINAGE INTENT SHALL  
REMAIN AS DEPICTED OR AS MODIFIED WITH THE APPROVAL OF THE CITY  
ENGINEER OF THE CITY OF WICHITA, KANSAS. NO OBSTRUCTIONS WHICH  
IMPED THE FLOW OF THIS DRAINAGE PLAN SHALL BE ALLOWED.