

JOINS PANEL 0508

37° 33' 45"
97° 18' 45"

MAA Addition

NFIP

NATIONAL FLOOD INSURANCE PROGRAM

PANEL 0505E

FIRM

FLOOD INSURANCE RATE MAP

SEDGWICK COUNTY, KANSAS AND INCORPORATED AREAS

PANEL 505 OF 700

(SEE MAP INDEX FOR FIRM PANEL LAYOUT)

CONTAINS

COMMUNITY	NUMBER	PANEL	SUFFIX
HAYSVILLE, CITY OF	200324	0505	E
SEDGWICK COUNTY	200321	0505	E
WICHITA, CITY OF	200328	0505	E

REVISED
PRELIMINARY

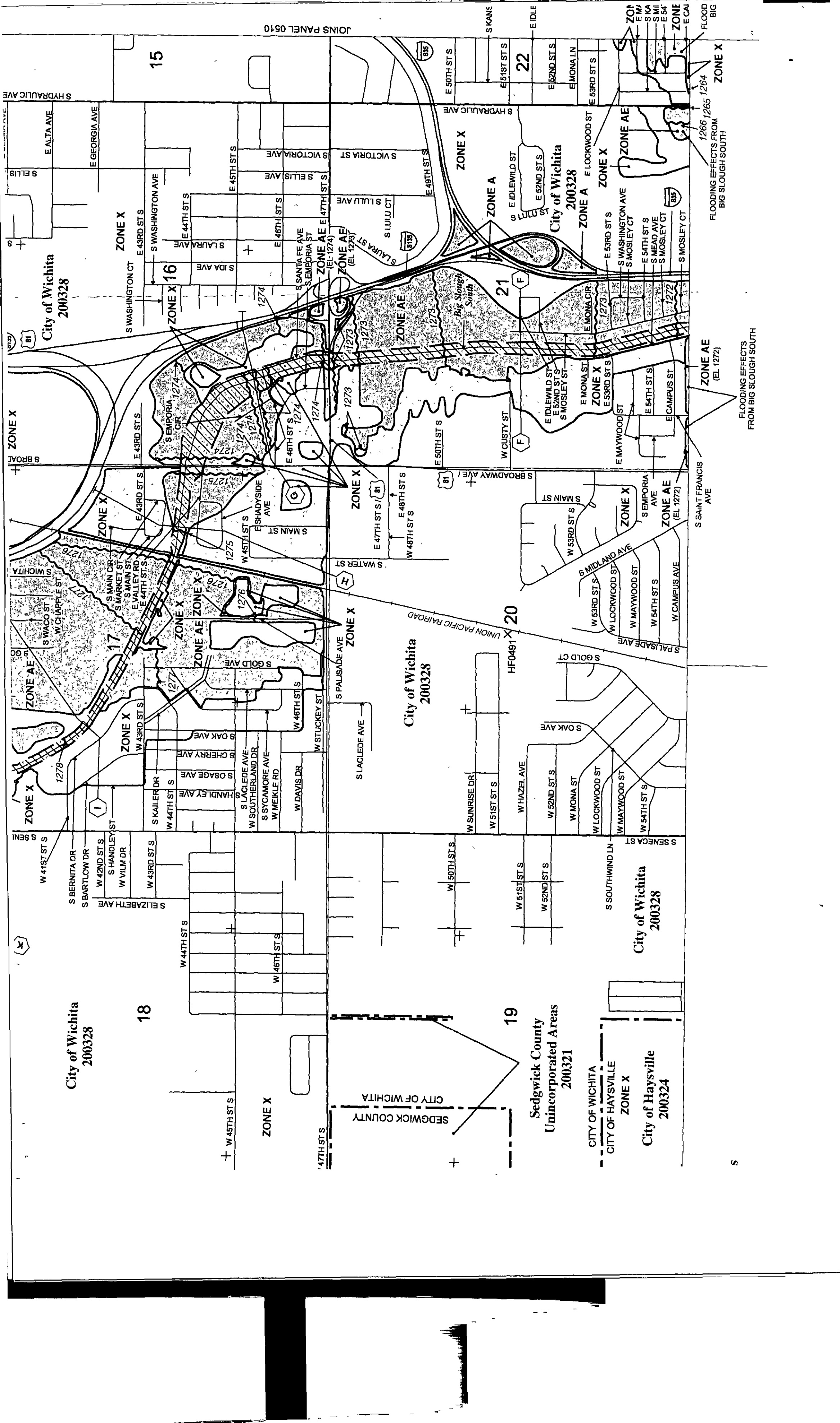
DEC 29 2004

Notice to User: The Map Number shown below should be used when placing map orders, the Community Number shown above should be used on insurance applications for the subject community.



MAP NUMBER
20173C0505E
EFFECTIVE DATE

Federal Emergency Management Agency



JOINS PANEL 0510

City of Wichita
200328

City of Wichita
200328

City of Wichita
200328

Sedgwick County
Unincorporated Areas
200321

City of Wichita
200328

CITY OF WICHITA
CITY OF HAYSVILLE
ZONE X
City of Haysville
200324

15

ZONE X 16

17

18

19

21

20

22

FLOODING EFFECTS
FROM BIG SLOUGH SOUTH

FLOODING EFFECTS FROM
BIG SLOUGH SOUTH

FLOODING EFFECTS FROM
BIG SLOUGH SOUTH

SEDGWICK COUNTY
CITY OF WICHITA

S

