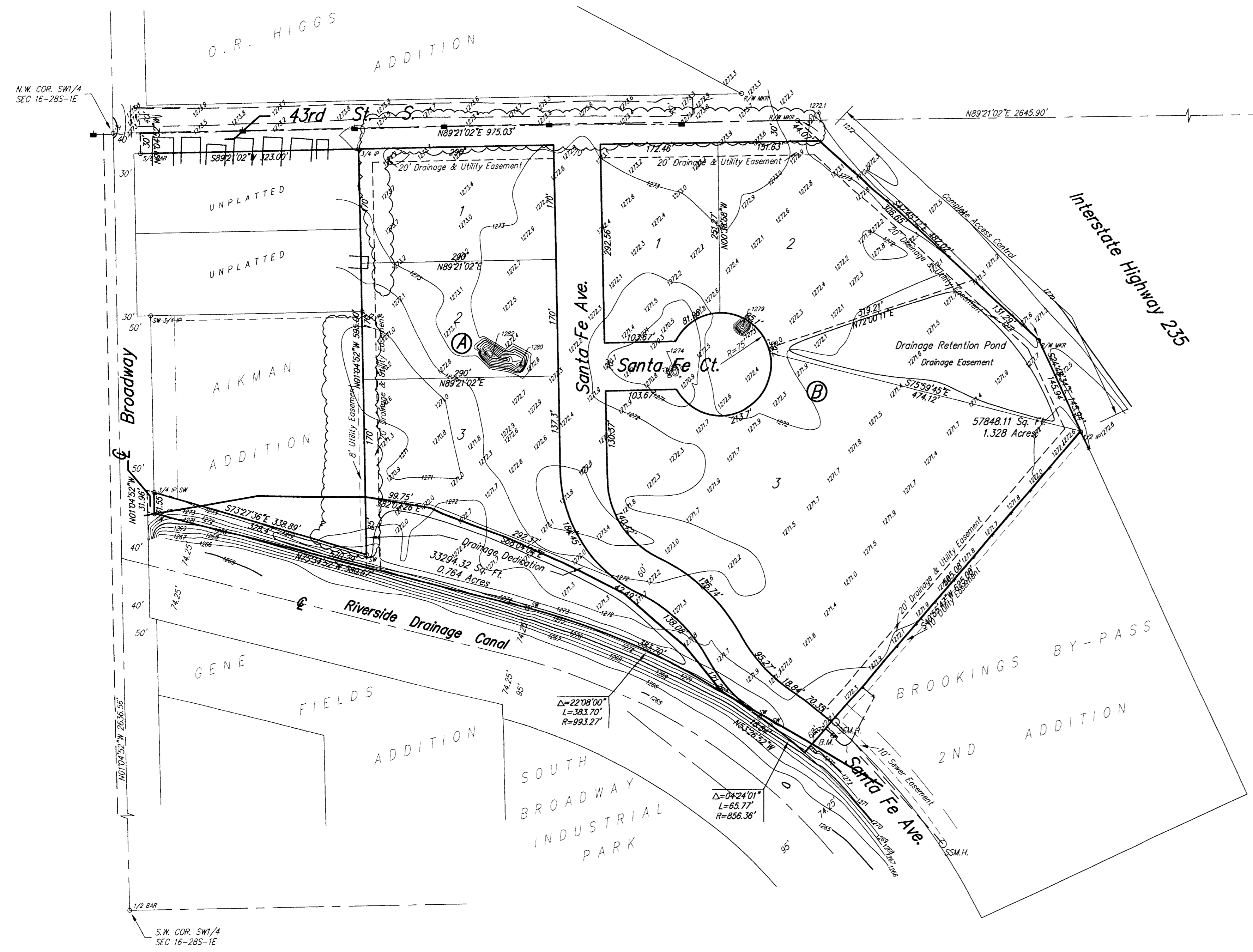


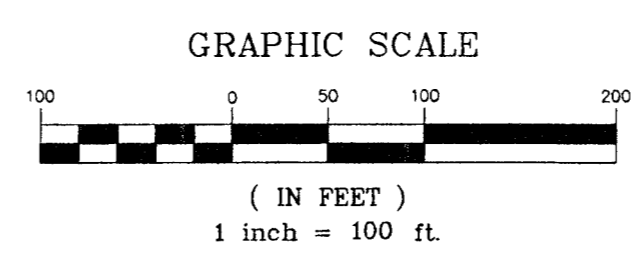
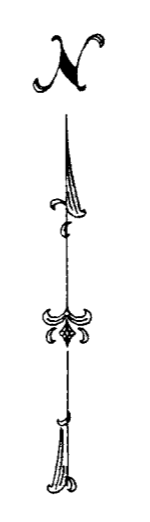
REVISED Preliminary Plat M A A ADDITION

WICHITA, SEDGWICK COUNTY, KANSAS



N.E. COR. SW1/4
SEC 16-285-1E

N.W. COR. SW1/4
SEC 16-285-1E



Reference Bench Mark: City of Wichita Bench Mark
22.0' N. & 29.8' E. of Centerline Intersection
Washington Ave. & 43rd St. S.
Elevation = 1271.17 NGVD

Reference Bench Mark: City of Wichita Bench Mark
112' S. of south face east bound bridge
54' east of Centerline Broadway Ave.
Elevation = 1275.24 NGVD

On Site B.M.: Square Cut on top of curb
between S 2 Curb Inlets on NEly side of
Santa Fe Ave. near the SEly most corner of
Subject Property
Elevation = 1272.23 NGVD

Legal Description:

That part of the SW1/4 of Sec. 16, Twp. 28-S, R-1-E of the 6th P.M., Sedgwick County, Kansas, lying North and East to the Riverside Drainage Canal as condemned in District Court Case No. 48670 and north of the North line of Brookings By-Pass 2nd Addition and west of the West line of Interstate Highway No. 1 235 as condemned in District Court Case A-76777, Except the south 240 feet of the north 270 feet of the west 363 feet thereof and Except Aikman Addition, and Except the west 40 feet for highway.

OWNER:
MAA LLC
Brad Phillips
Brook Phillips

GROSS SIZE
712156.78 Sq. Ft.
16.35 Acres±

NET SIZE OF PLAT
669793.73 Sq. Ft.
15.376 Acres±

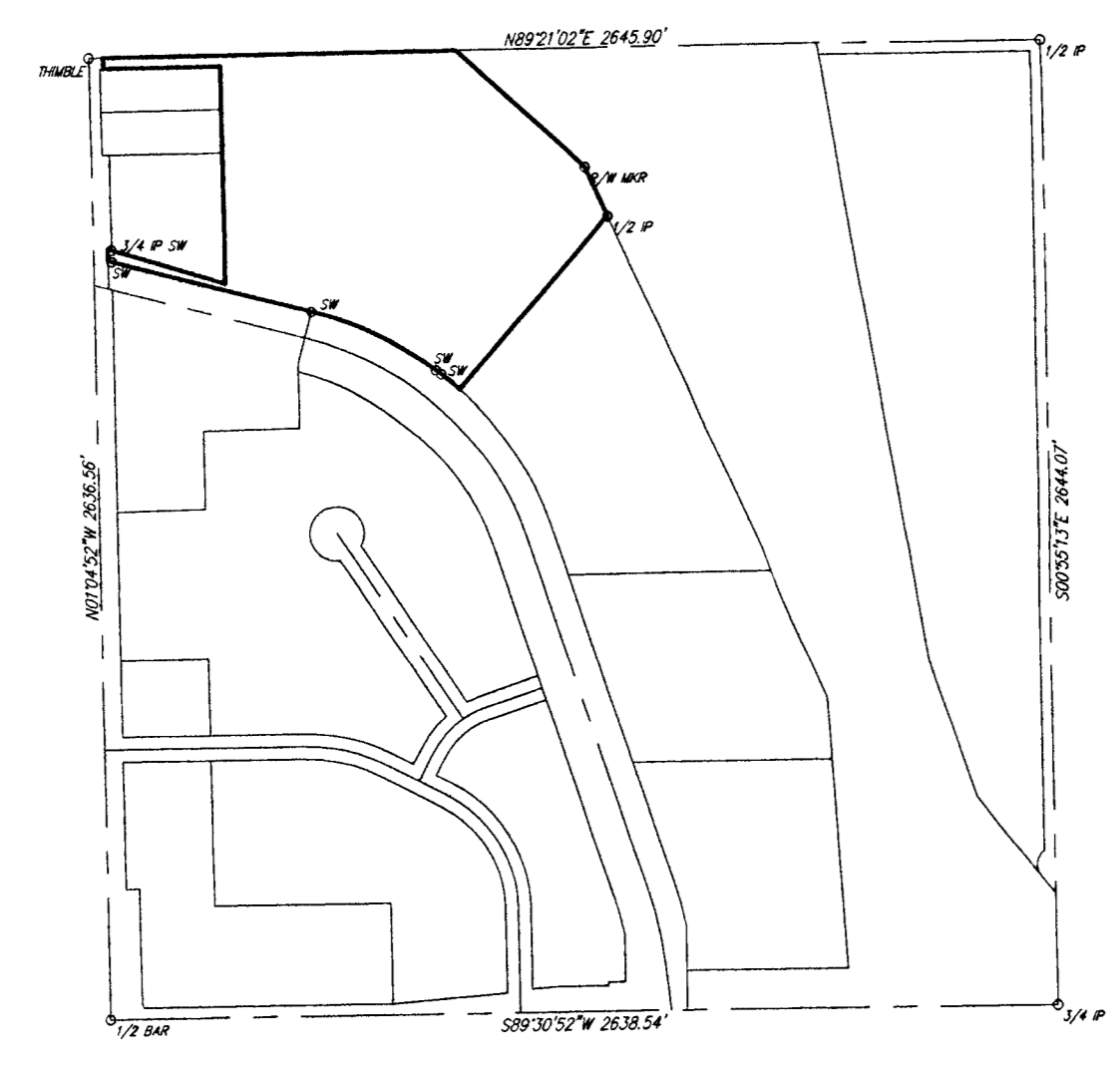
MINIMUM LOT SIZE
48114.68 Sq. Ft.
1.105 Acres±

ZONING
LC - Limited Commercial / SF-5 - Single Family

CONTROL NUMBER
118431

- ⊙ = CITY OF WICHITA CONTROL THIMBLE (FOUND)
- 1/2" Ⓢ = 1/2" STEEL BAR IN 3" HOLE (FOUND)
- 5/8" Ⓢ = 5/8" STEEL BAR (FOUND)
- 1" Ⓢ = 1" IRON PIPE (FOUND)
- 3/4" Ⓢ = 3/4" IRON PIPE (FOUND)
- 3/4" Ⓢ = 3/4" IRON PIPE W/SANDLEWOOD CAP (FOUND)
- 1" Ⓢ = 1" IRON PIPE W/SANDLEWOOD CAP (FOUND)
- 4"x4" Ⓢ = 4"x4" CONCRETE RIGHT-OF-WAY MARKER (FOUND)

- LEGEND**
- G = GAS MAIN
 - W = WATER MAIN
 - SS = SANITARY SEWER
 - SWS = STORM WATER SEWER
 - UGE = UNDER GROUND ELECTRIC
 - UGT = UNDER GROUND TELEPHONE
 - Ⓢ = BENCH MARK
 - ⊙ = MANHOLE



Savoy Company, P.A.
Land Surveyors

PH (316) 265-0005
FAX (316) 265-0275

PROJECT NO. 04E03294 P

535 S. Emporia, Suite 104, Wichita, KS 67202

www.savoyco.com

5 DEC 05