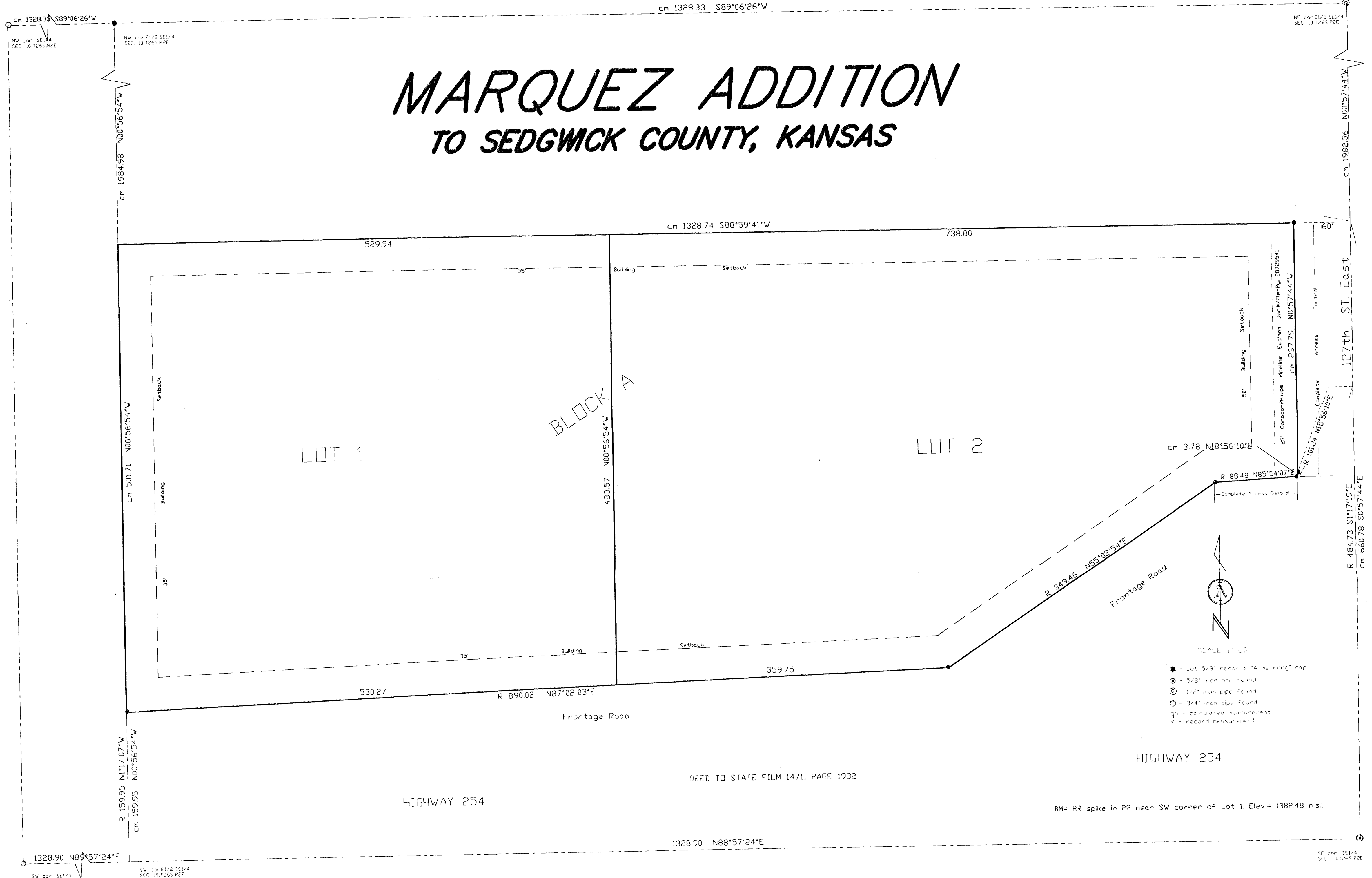


12/8/06

# MARQUEZ ADDITION TO SEDGWICK COUNTY, KANSAS



State of Kansas )  
County of Sedgwick ) ss

I, Donald C. Armstrong, a Registered Land Surveyor in said state and county do hereby certify that on this \_\_\_ day of \_\_\_\_\_, 2005, I have surveyed and platted "MARQUEZ ADDITION" to Sedgwick County, Kansas, into lots and a block, the same being described as follows:

THE SOUTH HALF OF THE SOUTH HALF OF THE EAST HALF OF THE SOUTHEAST QUARTER OF SECTION 10, T26S, R2E OF THE 6TH P.M., SEDGWICK COUNTY, KANSAS, EXCEPT THAT PART DESCRIBED AS FOLLOWS: BEGINNING AT THE SOUTHEAST CORNER OF SAID SOUTHEAST QUARTER; FIRST COURSE, THENCE ON AN ASSUMED BEARING OF S88°57'24"W ALONG THE SOUTH LINE OF SAID SOUTHEAST QUARTER, A DISTANCE OF 1328.90 FEET TO THE SOUTHWEST CORNER OF THE EAST HALF OF SAID SOUTHEAST QUARTER; SECOND COURSE, THENCE N01°17'07"W ALONG THE WEST LINE OF SAID EAST HALF, A DISTANCE OF 159.95 FEET; THIRD COURSE, THENCE N87°02'03"E, A DISTANCE OF 890.02 FEET; FOURTH COURSE, THENCE N55°02'54"E, A DISTANCE OF 349.46 FEET; FIFTH COURSE, THENCE N83°54'07"E, A DISTANCE OF 88.48 FEET; SIXTH COURSE, THENCE N18°56'10"E, A DISTANCE OF 101.24 FEET; SEVENTH COURSE, THENCE N88°42'41"E, A DISTANCE OF 2500 FEET TO THE EAST LINE OF SAID SOUTHEAST QUARTER; EIGHTH COURSE, THENCE S01°17'19"E ALONG SAID EAST LINE, A DISTANCE OF 484.73 FEET TO THE POINT OF BEGINNING.

*Donald C. Armstrong*  
Donald C. Armstrong R.L.S. #17780

Know all men by these presents that I, the undersigned, have caused the land described in the surveyors certificate to be platted into lots and streets to be known as "MARQUEZ ADDITION TO SEDGWICK COUNTY, KANSAS". The streets are hereby dedicated to and for the use of the public. All obutters' rights of access to and from 127th Street East over and across the east line of the plot and that portion of the frontage road as indicated are hereby granted to the appropriate governing body. The utility easements as indicated are hereby granted for the construction and maintenance of all public utilities. The drainage easements as indicated are hereby granted for drainage purposes. A drainage plan has been developed for this plot and all drainage easements, right-of-ways, or reserves shall remain at established grades or as modified with approval of the applicable city or county Engineer, and unobstructed to allow for the conveyance of stormwater. The Minimum Pad elevations for the lowest opening to the structures shall be as indicated on the face of the plat.

OWNER:  
*Jose A. Marquez*  
Jose A. Marquez Date

State of Kansas )  
County of Sedgwick ) ss

Be it remembered that on this 23<sup>rd</sup> day of December, 2005, before me, a Notary Public in aforesaid state and county, came Jose A. Marquez to me personally to be the same person who executed the foregoing instrument of writing and duly acknowledged the execution of the same in testimony whereof I have hereunto set my hand and affixed my notarial seal the day and year above written.

*Anna S. Newman* Notary Public  
My commission expires: February 23, 2007

This plat has been submitted to and approved by the Wichita-Sedgwick County Metropolitan Area Planning Commission, Wichita, Kansas. Dated this \_\_\_ day of \_\_\_\_\_, 200\_\_.

*Wanda K. Dunlap* Chairman *John L. Schlegel* Secretary  
*Dorell Downing*

Reviewed in accordance with K.S.A. 58-2005 on this \_\_\_ day of \_\_\_\_\_, 200\_\_.

*Tricia L. Robello* LS #1246  
Deputy County Surveyor  
Sedgwick County, Kansas

This plat approved and all dedications shown hereon accepted by the City Council of City of Wichita, Kansas, this \_\_\_ day of \_\_\_\_\_, 200\_\_.

\_\_\_\_\_  
Mayor  
*Carlos Moyans*

\_\_\_\_\_  
City Clerk  
*Karen Sublett*

State of Kansas )  
County of Sedgwick )

This is to certify that this plat has been filed for record in the office of the Register of Deeds this \_\_\_ day of \_\_\_\_\_, 200\_\_ at \_\_\_\_\_ M., and duly recorded.

\_\_\_\_\_  
Register of Deeds  
*Bill Meek*

\_\_\_\_\_  
Deputy  
*Tonya Buckingham*

This plat approved and all dedications shown hereon accepted by the Board of County Commissioners of Sedgwick County, Kansas, this \_\_\_ day of \_\_\_\_\_, 200\_\_.

\_\_\_\_\_  
Chairman  
*Ben Sciortino*

\_\_\_\_\_  
County Clerk  
*Don Brace*

Entered on transfer record the \_\_\_ day of \_\_\_\_\_, 200\_\_.

\_\_\_\_\_  
County Clerk  
*Don Brace*