

# MARTIN ACRES

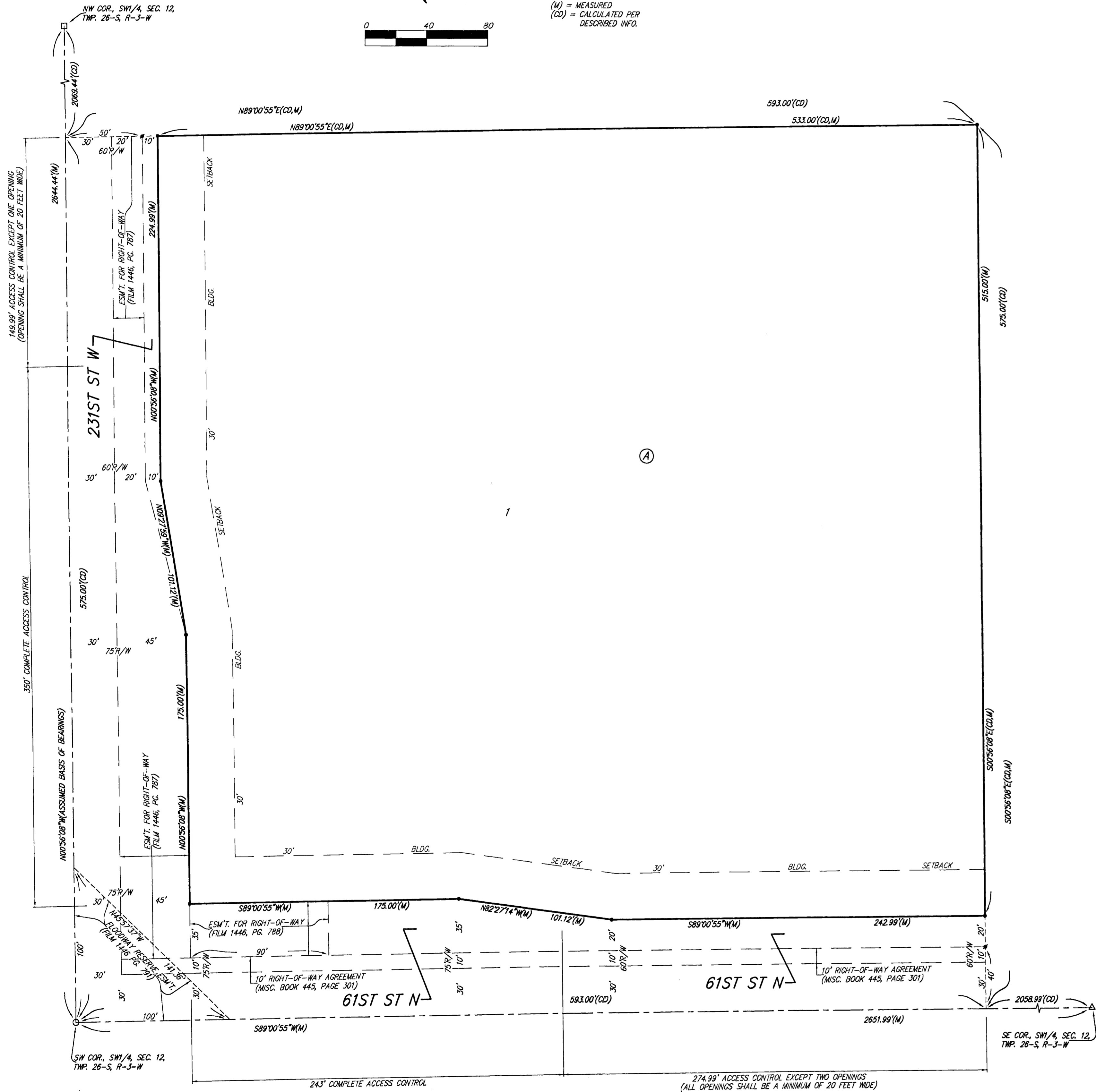
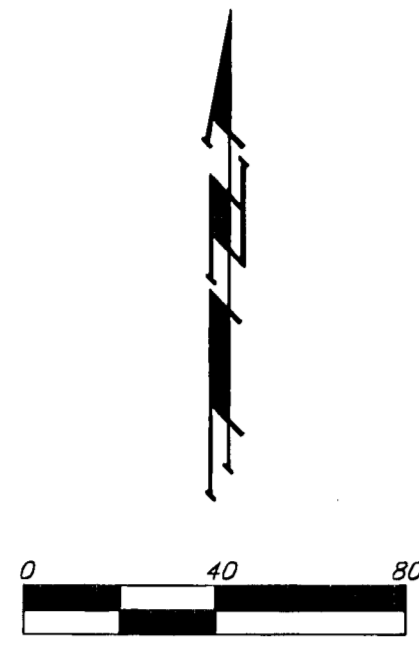
## SEDGWICK COUNTY, KANSAS

FINAL TRACING RECD

5/27/10

- = #4 REBAR W/ "BAUGHMAN" CAP (SET)
- = #4 REBAR W/ "BAUGHMAN" CAP (FOUND)
- = 1/2" IRON (FOUND)
- △ = 3/4" IRON (FOUND)
- = 1" IRON (FOUND)

(M) = MEASURED  
(CD) = CALCULATED PER DESCRIBED INFO



State of Kansas) SS We, Baughman Company, P.A., Surveyors in Sedgwick County and state do hereby certify that we have surveyed and plotted "MARTIN ACRES", Sedgwick County, Kansas and that the accompanying plat is a true and correct exhibit of the property surveyed, described as the south 575.00 feet of the west 593.00 feet of the Southwest Quarter of Section 12, Township 26 South, Range 3 West of the 6th Principal Meridian, Sedgwick County, Kansas, all being subject to rights-of-way of record.

Existing public easements and dedications being vacated by virtue of K.S.A. 12-512(b).

Baughman Company, P.A.

This plat of "MARTIN ACRES", Sedgwick County, Kansas has been submitted to and approved by the Wichita-Sedgwick County Metropolitan Area Planning Commission, Wichita, Kansas.

Dated this \_\_\_\_\_ day of \_\_\_\_\_, 2010.  
Wichita-Sedgwick County Metropolitan Area Planning Commission

\_\_\_\_\_, Chair  
G. Nelson Van Fleet

\_\_\_\_\_, Secretary  
John L. Schlegel

Michael A. Conrey, Surveyor  
Michael G. Conrey

This plat approved and all dedications shown hereon accepted by the Board of Commissioners of Sedgwick County, Kansas, this \_\_\_\_\_ day of \_\_\_\_\_, 2010.

Know all men by these presents that we, the undersigned, have caused the land in the surveyors certificate to be platted into a Lot, a Block, and Streets to be known as "MARTIN ACRES", Sedgwick County, Kansas. Access controls shall be as depicted on the face of the plat and are hereby granted to the appropriate governing body. The permitted opening locations shall be as determined by the Engineer for the appropriate governing body.

\_\_\_\_\_, Chair  
Karl Peterjohn

ATTEST: \_\_\_\_\_, County Clerk  
Kelly B. Arnold

Ghanem Asif Aouad, Valerie Sue Aouad

Reviewed in accordance with K.S.A. 58-2005 on this \_\_\_\_\_ day of \_\_\_\_\_, 2010.

State of Kansas) SS The foregoing instrument acknowledged before me, this 25th day of MAY, 2010, by Ghanem Asif Aouad and Valerie Sue Aouad, husband and wife.

JUDITH M. TERHUNE, Notary Public  
My App't. Exp. 11-7-2013

Judith M. Terhune, Notary Public

Tricia L. Rabella, L.S. #1246  
Deputy County Surveyor  
Sedgwick County, Kansas

We, the undersigned, holders of a mortgage on the above described property, do hereby consent to this plat of "MARTIN ACRES", Sedgwick County, Kansas.

Bank of America, N.A.  
Matthew J. Wendling, SVP

Entered on transfer record this \_\_\_\_\_ day of \_\_\_\_\_, 2010.

\_\_\_\_\_, County Clerk  
Kelly B. Arnold

State of Kansas) SS The foregoing instrument acknowledged before me, this 25th day of May, 2010, by Matthew J. Wendling, SVP of Bank of America, N.A., on behalf of the bank.

Rachael E. Overley, Notary Public  
My App't. Exp. 2/22/13

Rachael E. Overley, Notary Public

State of Kansas) SS This is to certify that this plat has been filed for record in the office of the Register of Deeds, this \_\_\_\_\_ day of \_\_\_\_\_, 2010 at \_\_\_\_\_ o'clock \_\_\_\_\_ M. and is duly recorded.

\_\_\_\_\_, Register of Deeds  
Bill Meek

\_\_\_\_\_, Deputy  
Tonya Buckingham

NOTE: A master grading plan for drainage has been developed for this subdivision and is on file with the appropriate governing body. All drainage easements, right-of-ways, or reserves shall remain at established grades or as modified with the approval of the City Engineer of the appropriate governing body. No obstructions which impede the flow of this drainage system shall be allowed.