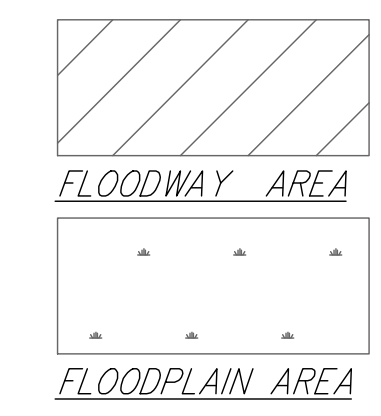
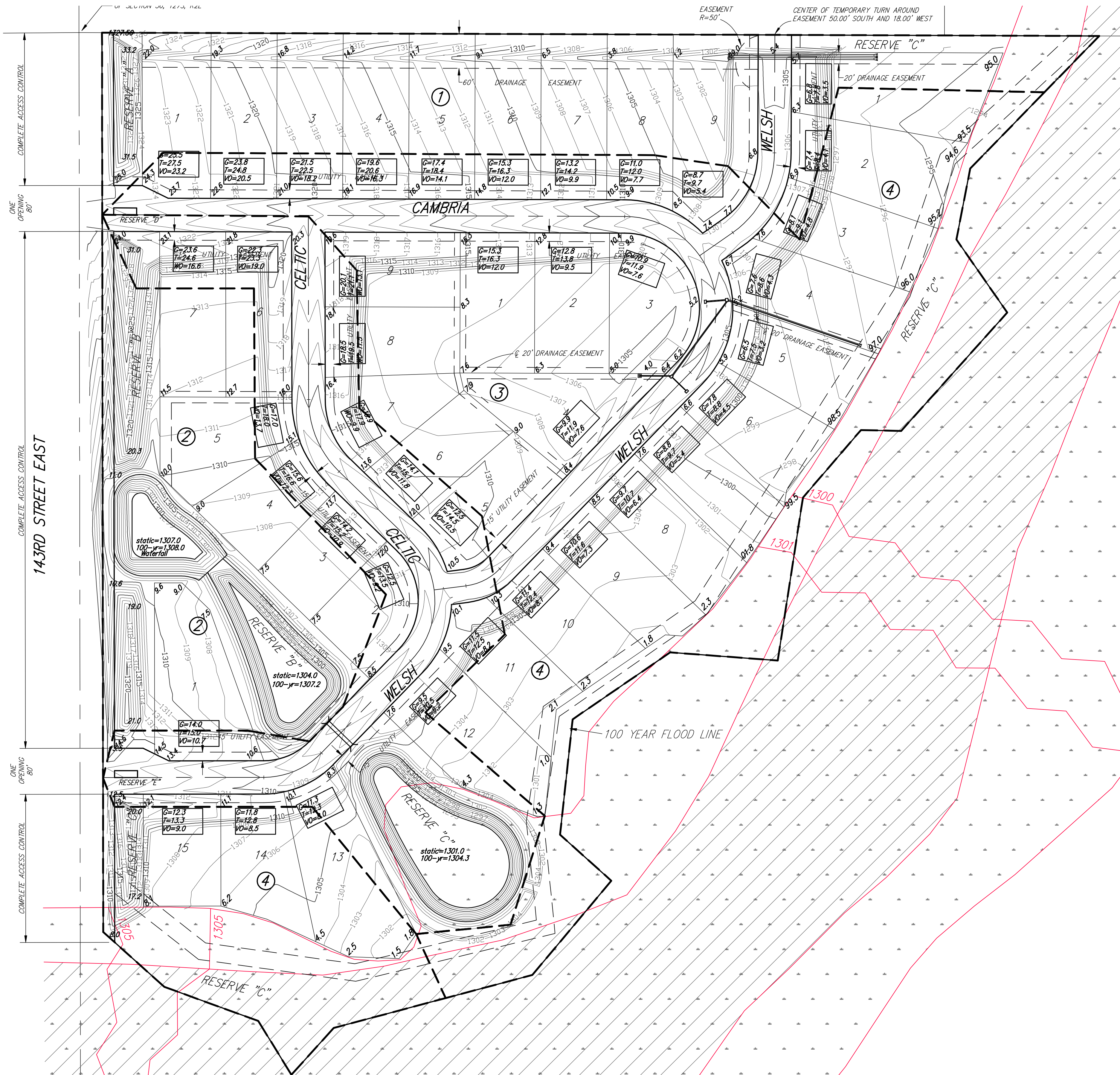
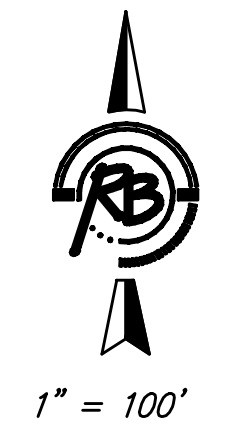
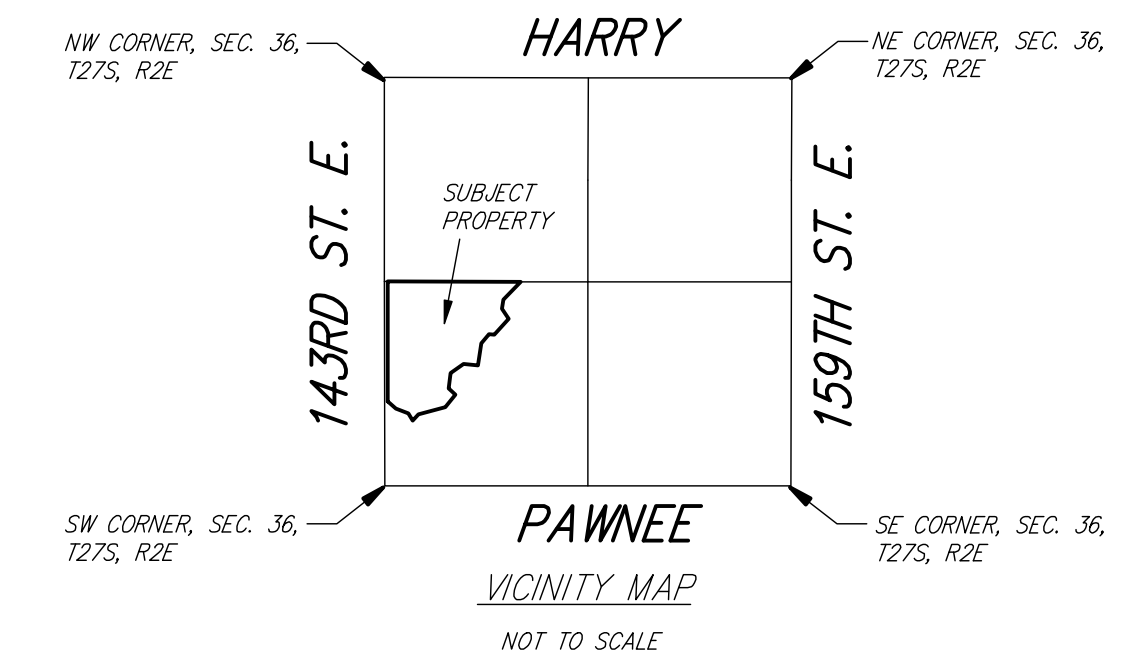


# GRADING PLAN FOR CAMBRIA ADDITION WICHITA, SEDGWICK COUNTY, KANSAS



BENCH MARK: P.R. SPIKE 32.39' E. & 40.87' N. OF THE CENTERLINE INTERSECTION PAWNEE AVENUE & 127TH STREET EAST  
ELEV.=1348.62 (NGVD) = 161.22 (CITY DATUM)

BENCH MARK: SRB BRASS DISC 1008.17' E. & 55.63' N. OF THE CENTERLINE INTERSECTION PAWNEE AVENUE & 127TH STREET EAST  
ELEV.=1336.63 (NGVD) = 149.23 (CITY DATUM)



**Ruggles & Bohm, P.A.**  
Engineering, Surveying, Land Planning  
804 North Main  
Wichita, Kansas 67208  
www.rugglesandbohman.com  
(316) 264-0000  
(316) 264-4821 fax  
E-mail: info@rugglesandbohman.com