

Brentwood South 3rd Addition Street Improvements

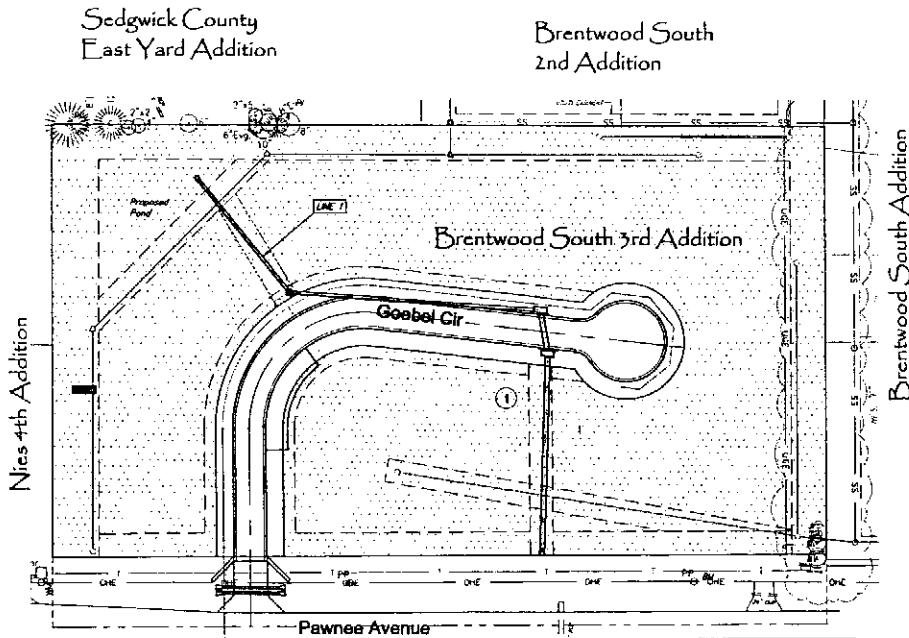
Goebel Circle from the North line of Pawnee to and including cul-de-sac

PROJECT NO. 472-84656

OCA # 766194

GENERAL NOTES

1. Contractor will be required to provide a minimum advance notice of twenty-four (24) hours to utility companies prior to starting any excavation as follows:
Kansas One-Call 887-2470
2. The Contractor must notify the following in case of an emergency:
Gas Communications 262-0881
Kansas Gas Service 323-8600
Water 323-8600
Sewer 1-800-323-2357
SIC 1-800-226-8113
City of Wichita Water Department 262-6000
City of Wichita Sewer Maintenance 262-6000
3. A saw cut of at least one-half the depth of existing surface courses or one-fourth the depth of existing total pavement thickness shall be provided at locations where proposed construction abuts an existing surface course or pavement for which partial removal of that surface or pavement is required, except when such saw cuts are within three (3) feet of an existing joint the limits of removal shall be extended to the existing joint. Such saw cuts will not be paid for directly and this cost shall be considered as subsidiary to the removal of the surface or pavement.
4. Rubble from the removal of miscellaneous structures and excess excavation which is to be wasted shall be disposed of on a site to be provided by the Contractor. These sites shall be approved by the Engineer as to suitability, appearance and site location. Locations that, in the opinion of the Engineer, will leave an unsightly appearance will not be approved.
5. All disposal sites must be approved by the Kansas Department of Health and Environment. Material either stockpiled or disposed of in a flood plain would require a Kansas State Board of Agriculture permit. Any material dumped in waters of the United States or wetlands is subject to U.S. Corps permitting regulations. Any material buried or stockpiled beyond approved Engineers construction limits would require additional archeological investigations unless buried in a previously approved borrow location.
6. The Contractor shall be responsible for preserving property irons. The Contractor will be required to re-establish any property lines which are damaged or destroyed by his construction operations. Such irons shall be re-established by a licensed land surveyor in accordance with state laws.
7. The Contractor shall give all property owners and/or tenants of developed property directly abutting the construction of this project a minimum of ten (10) days advance notice prior to start of construction.
8. Underground utility service lines and overhead utility pole lines are to be adjusted as necessary by others prior to construction unless the plans specifically call for their adjustment by the Contractor or unless the plans specifically identify a utility to be adjusted by its owner during construction. Existing utilities and their location, as shown on the plans, represent the best information obtainable for design. Location information has been obtained from the various utility companies and is either from company record drawings or company-provided field locations. The Contractor will be required to work around existing utilities within the right-of-way which do not conflict with proposed construction.
9. Trees and shrubs in public right-of-way which are in direct conflict with proposed new construction shall be removed by the Contractor with the Engineer's approval. Trees and shrubs which are not in direct conflict with proposed new construction shall be saved and protected from damage.
10. The Contractor shall seed, fertilize and mulch all disturbed areas per City specifications upon completion of construction subsidiary to bid item for "Project Seeding".
11. Subdivision Bench Marks shall be "Flat Survey Markers No. 8134-08 3" top diameter", provided by Kansas Blue Print Co., Inc. Bench mark installation cost to be subsidiary to curb & gutter.
12. At the time of plan completion the City of Wichita had not assigned house numbers for the units along Goebel Circle. Prior to ordering street signs the Contractor shall contact the City of Wichita to get the range of unit numbers to be included on the Goebel Circle street name sign.
13. Developer contact: Steve Miller 259-2377

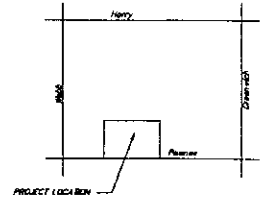


BENCH MARK

BENCH MARK: CON BENCHMARK AT THE SOUTHEAST CORNER OF THE INTERSECTION OF CHAMBERLAIN AND SUMNER ELEV=1334.03 (NGVD29)
ON SITE BENCH MARK: R.R. SPIKE ON EAST FACE OF POWER POLE 1.95 FEET EAST AND 46 FEET NORTH OF THE S.W. CORNER, SEC. 31, T27S, R2E ELEV=1308.99 (NGVD29)

Index of Sheets

- | | |
|--------|-----------------------|
| 1. | TITLE SHEET |
| 2. | TYPICAL SECTION |
| 3. | SIGNAGE DETAIL |
| 4. | GOEBEL CIRCLE |
| 5. | TYPE 1A INLET DETAIL |
| 6. | TYPE P MANHOLE DETAIL |
| 7-8. | SWS PLAN & PROFILE |
| 9. | POUD PLAN |
| 10. | PROJECT BMP PLAN |
| 11-13. | BMP DETAILS |
| 14. | COORDINATE MAP |
| 15-17. | CROSS SECTIONS |
| 18. | PLAT |



VICINITY MAP



IMPROVEMENT DISTRICT



PROJECT LENGTH = 894 LF
CUT = 250 CY
FILL = 5000 CY
NET = 4250 CY FILL

CITY OF WICHITA, KANSAS
JAMES ARMOUR, P.E. - CITY ENGINEER

