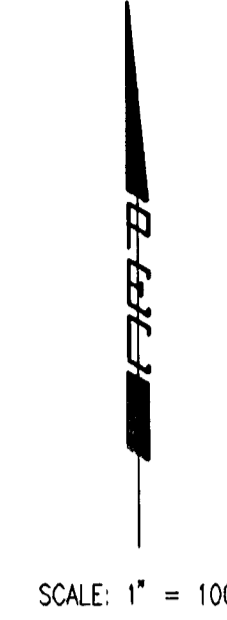
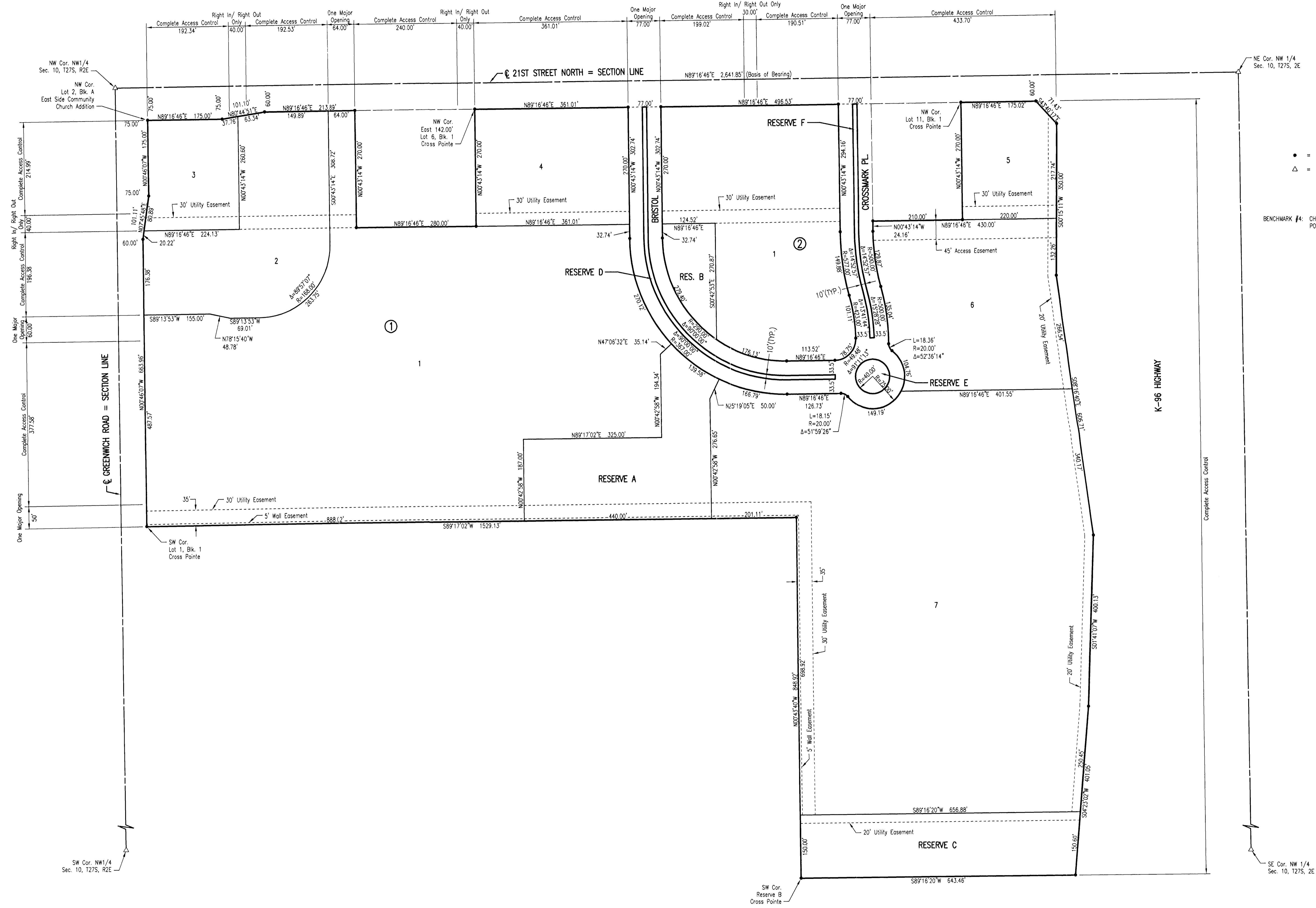


Revised
TRACING RECORD
12-6-07

CROSS POINTE 2ND

AN ADDITION TO WICHITA, SEDGWICK COUNTY, KANSAS



● = 1/2" REBAR W/PEC. CAP UNLESS OTHERWISE NOTED
△ = SECTION CORNER

BENCHMARK #4: CHISELED SQUARE ON CONCRETE BASE TRAFFIC SIGNAL POLE AT S.W. CORNER 21ST AND GREENWICH. ELEV. = 176.16 C.O.W. DATUM

Printed: 11-29-2007 11:00:35 AM by AEE
Plot Scale: 1:100 12-06-2007 2:13:42 PM
C:\000\101365\101365.dwg Plot page 2 of 2