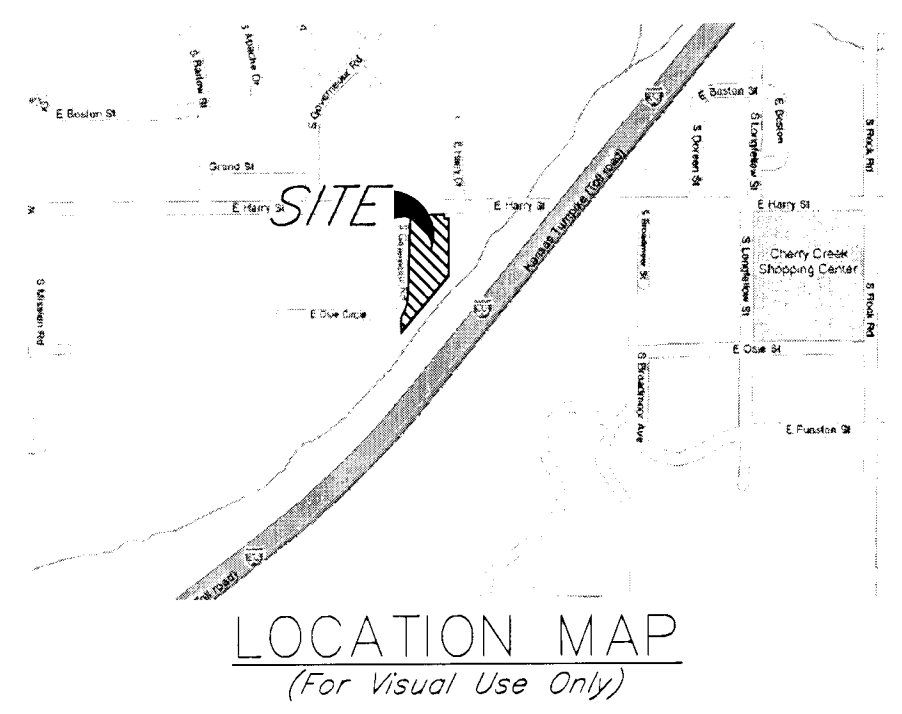
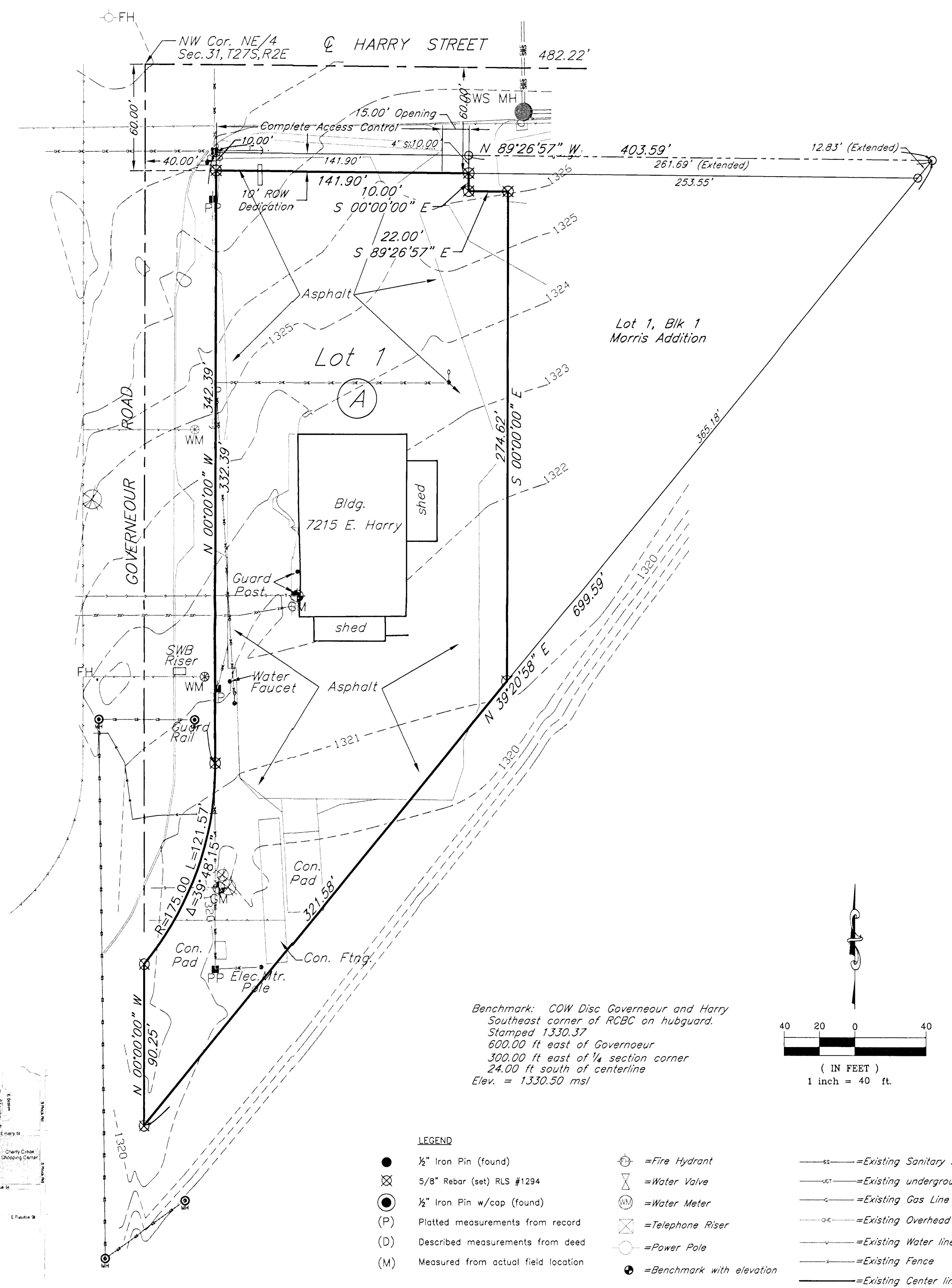


ONE-STEP PLAT OF Auto Image Addition WICHITA, SEDGWICK COUNTY, KANSAS

Part of the Northeast 1/4, Section 31, Township 27 South, Range 2 East of the 6th. P.M.



State of Kansas)
 County of Sedgwick) ss

I, Randall L. Elkins, a licensed land surveyor of the State of Kansas, do hereby certify that the following described tract of land was surveyed on the 8th day of October, 2008 and the accompanying final plat prepared and that all the monuments shown herein actually exist and their positions are correctly shown to the best of my knowledge and belief:

Described as the Auto Image Addition, Wichita, Sedgwick County, Kansas, beginning 50 ft South & 40 ft East of the Northwest Corner of Northeast 1/4 Corner; thence East 141.90 ft; thence South 20 ft; thence East 22 ft; thence South 274.62 ft to the Northwesterly Line of Gypsum Creek; thence Southwest 321.58 ft to West line of the Northeast 1/4 Section; thence North 90.25 ft to a curve on the Southeast line of Governoeur; thence Northeasterly along Curve 121.46 ft, North along the east line of Governoeur 342.39 ft to beginning.

All being situated in the NE 1/4 of Section 31, Township 27-S, Range 2, East to the 6th P.M., Sedgwick County, Kansas.

Said tract contains 1.54 acres ±.

All easements and rights-of-way within said lots are hereby vacated by virtue of KSA 12-512(b) amended.

State of Kansas)
 County of Sedgwick) ss

My Commission Expires: _____

Notary Public

State of Kansas)
 City of Wichita) ss

This instrument was acknowledged before me on this ____ day of _____, 2008, by _____

This plat of Auto Image Addition, Wichita, Sedgwick County, Kansas, has been submitted to and approved by the Wichita-Sedgwick County Metropolitan Area Planning Commission, Wichita, Kansas. Dated this ____ day of _____, 2008. Wichita-Sedgwick County Metropolitan Area Planning Commission.

Darrell Drowning, Chairman

John L. Schlegel, Secretary

State of Kansas)
 City of Wichita) ss

This plat approved and all dedications shown hereon accepted by the City Council of the City of Wichita, Kansas, this ____ day of _____, 2008.

At the Direction of the City Council

Carl Brewer, Mayor

Karen Sublett, City Clerk

Entered on transfer record this ____ day of _____, 2008.

Donald Brace, County Clerk

State of Kansas)
 County of Sedgwick) ss

This is to certify that this plat has been filed for record in the Office of the Register of Deeds this ____ day of _____, 2008, at ____ o'clock ____ M, and is duly recorded.

Bill Meek, Register of Deeds

Reviewed in accordance with K.S.A. 58-2005 on this ____ day of _____, 2008.

Tricia L. Robello, L.S. #1246
 Deputy County Surveyor
 Sedgwick County, Kansas

Filename: 08138 TRANS-NET PLAT

516 S. Market, Wichita, KS 67202 316/264-0242