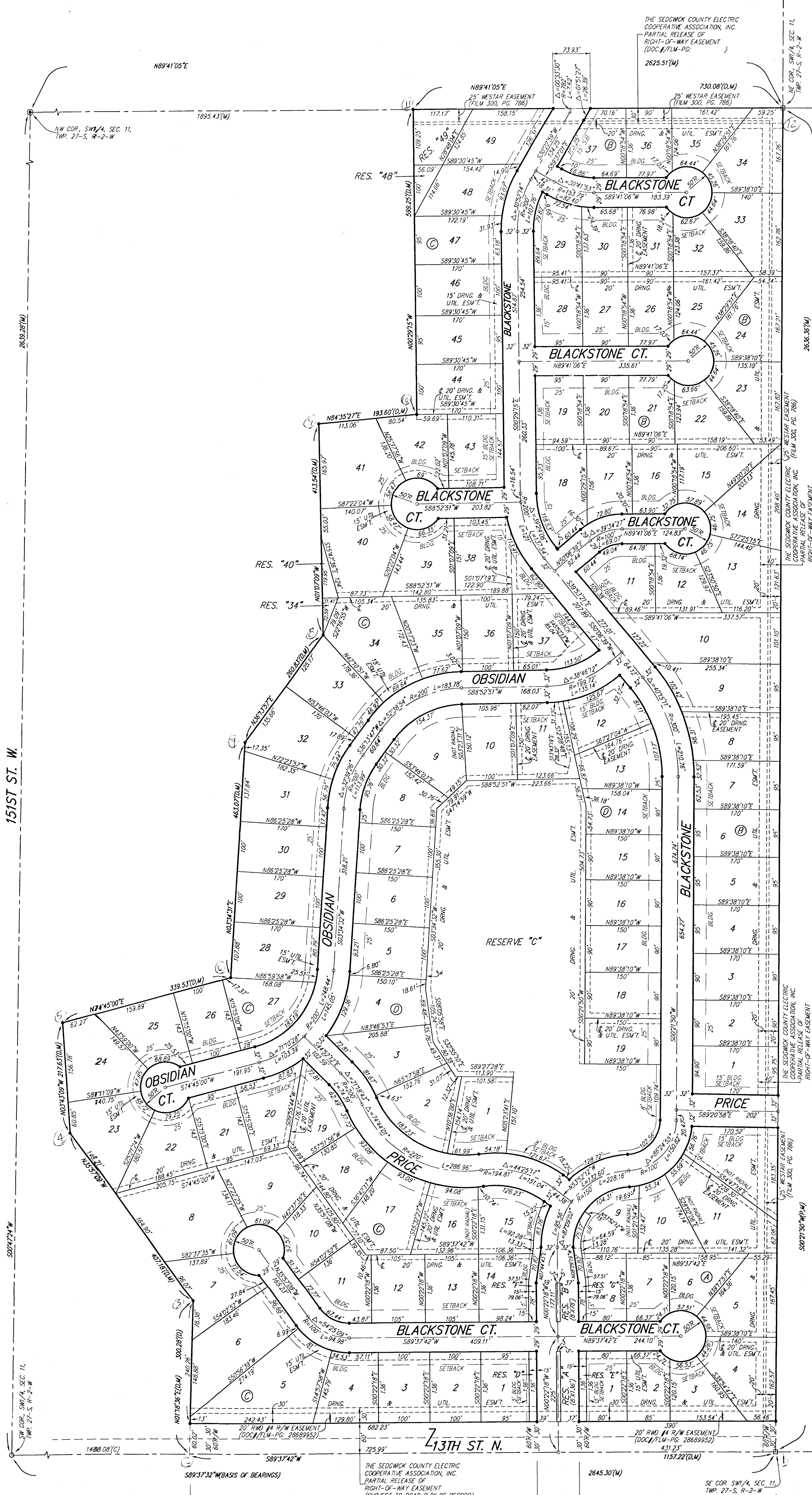


BLACKSTONE ADDITION

WICHITA, SEDGWICK COUNTY, KANSAS



State of Kansas) SS We, **Baughman Company, P.A.**, Surveyors in
Sedgwick County) and state do hereby certify that we have surveyed and
plotted "ADDITION", Wichita, Sedgwick County, Kansas and that the
accompanying plat is a true and correct exhibit of the property surveyed,
described as part of the SW1/4 of Sec. 11, Twp. 27-S, R-2-W of the 6th
P.M., Sedgwick County, Kansas, more particularly described as follows:
Beginning at the SE corner of said SW1/4; thence S89°37'42"W along the
south line of said SW1/4, 1157.22 feet; thence N01°18'36"E, 300.28 feet;
thence N32°37'09"W, 407.18 feet; thence N03°14'09"W, 217.03 feet; thence
N74°45'00"E, 339.53 feet; thence N03°34'31"E, 463.07 feet; thence
N36°13'57"E, 260.83 feet; thence N01°07'09"W, 413.54 feet; thence
N84°35'27"E, 193.60 feet; thence N00°29'15"W, 599.25 feet to a point on
the north line of said SW1/4; thence N89°41'05"E along the north line of
said SW1/4, 730.08 feet to the NE corner of said SW1/4; thence
S00°21'50"W along the east line of said SW1/4, 2636.36 feet to the point
of beginning, all being subject to road rights-of-way of record.
Existing public easements and dedications
being vacated by virtue of K.S.A. 12-512(b).

Baughman Company, P.A.
Michael G. Conroy, Surveyor

Know all men by these presents that we,
the undersigned, have caused the land in the surveyors certificate to be
plotted into Lots, Blocks, Reserves, and Streets, to be known as
"BLACKSTONE ADDITION", Wichita, Sedgwick County, Kansas. The utility
easements are hereby granted as indicated for the construction and
maintenance of all public utilities. The drainage and utility easements are
hereby granted as indicated for drainage purposes and for the
construction and maintenance of all public utilities. The drainage
easements are hereby granted as indicated for drainage purposes.
Reserves "A" and "B" are hereby reserved for entry monuments,
landscaping, open space, streets, drainage purposes, and utilities. The
public shall not bear the cost of any repair or replacement of
improvements within said Reserves "A" and "B" adversely affected by
street construction, repair, or maintenance. Reserve "C" is hereby
reserved for landscaping, lakes, open space, berms, drainage purposes,
swimming pool and related accessories, parking, gazebos, recreational
uses, private sidewalks, and utilities as confined to easements. Reserves
"D" and "E" are hereby reserved for entry monuments, landscaping, berms,
drainage purposes, and utilities as confined to easements. Reserves "F"
and "G" are hereby reserved for landscaping, berms, drainage purposes,
and utilities as confined to easements. Reserves "A", "B", "C", "D", "E",
"F", and "G" shall be owned and maintained by the homeowners
association for the addition. Reserves "34", "40", "48", and "49", are
hereby reserved for landscaping, open space, and drainage purposes.
Reserves "34", "40", "48", and "49", shall be owned and maintained by
their corresponding adjacent lots. The streets are hereby dedicated to
and for the use of the public. Access controls shall be as depicted on
the face of the plat and are hereby granted to the City of Wichita,
Kansas. The Minimum Building Pad Elevations for the lowest opening to
the structures shall be as indicated on the face of the plat.

Kelsey Development, Inc., a Kansas corporation
Paul E. Kelsey, President

State of Kansas) SS The foregoing instrument acknowledged before
Sedgwick County) me, this _____ day of _____, 2006, by Paul E. Kelsey, President of
Kelsey Development, Inc., a Kansas corporation, on behalf of the
corporation.

_____, Notary Public
My App't. Exp. _____

This plat of "BLACKSTONE ADDITION", Wichita,
Sedgwick County, Kansas has been submitted to and approved by the
Wichita-Sedgwick County Metropolitan Area Planning Commission, Wichita,
Kansas.
Dated this _____ day of _____, 2006.
Wichita-Sedgwick County Metropolitan Area Planning Commission

Harold L. Warner, Jr., Chair
John L. Schlegel, Secretary

This plat approved and all dedications
shown hereon accepted by the City Council of the City of Wichita,
Kansas, this _____ day of _____, 2006.

Carlos Mayans, Mayor
Karen Sublett, City Clerk

Reviewed in accordance with K.S.A. 58-2005
on this _____ day of _____, 2006.

Tricia L. Robello, L.S. #1246
Deputy County Surveyor
Sedgwick County, Kansas

Entered on transfer record this _____ day
of _____, 2006.

Don Broce, County Clerk

State of Kansas) SS This is to certify that this plat has been
Sedgwick County) filed for record in the office of the Register of Deeds, this _____ day
of _____, 2006 at _____ o'clock _____ M., and is duly recorded.

Bill Meek, Register of Deeds
Tonya Buckingham, Deputy

LOT	BLOCK	ELEVATION
34-37	B	1366.1
5	C	1373.0
6-R, 22, 23	C	1375.0
24-26	C	1374.0
27-29	C	1373.0
30-31	C	1372.0
32-34	C	1370.5
35, 39-42	C	1369.0
43-45	C	1368.5
46-47	C	1368.0
48-49	C	1367.0
1-19	D	1368.2

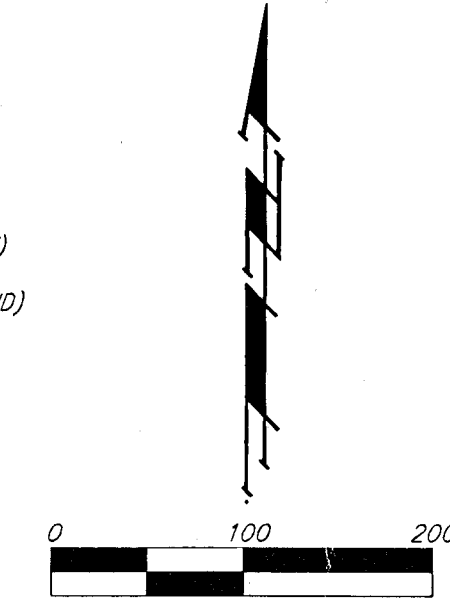
135TH ST. W. & 13TH ST. N. - CITY OF WICHITA DISC
AT SOUTHWEST CORNER OF INTERSECTION,
30.00' S. OF E
ELEV. = 1368.64 NGVD29
(1978.23 CITY DATUM)

SMALL RAILROAD SPIKE IN 2ND HLP. W. OF 135TH ST. W.
ON SOUTH SIDE OF 13TH ST. N., (N. FACE OF HLP.)
ELEV. = 1359.50 NGVD29

SMALL RAILROAD SPIKE IN 4TH HLP. W. OF 135TH ST. W.
ON SOUTH SIDE OF 13TH ST. N., (N. FACE OF HLP.)
ELEV. = 1368.64 NGVD29

135TH ST. W. & 13TH ST. N. - CITY OF WICHITA DISC
AT SOUTHWEST CORNER OF INTERSECTION,
56.00' E. OF E
55.00' S. OF E
ELEV. = 1368.64 NGVD29
(1978.23 CITY DATUM)

- #4 REBAR W/ "BAUGHMAN" CAP (SET)
 - #4 REBAR OVER STONE (FOUND)
 - #1 STEEL CAP SURVEY MARKER (FOUND)
 - STONE (FOUND)
- (M) = MEASURED
(D) = DESCRIBED
(P) = PLATTED
(C) = CALCULATED



NOTE:
A MASTER GRADING PLAN FOR DRAINAGE HAS BEEN DEVELOPED FOR THIS
SUBDIVISION AND IS ON FILE WITH THE CITY OF WICHITA, KANSAS.
ALL DRAINAGE EASEMENTS, RIGHTS-OF-WAY, OR RESERVES SHALL REMAIN
AT ESTABLISHED GRADES OR AS MODIFIED WITH THE APPROVAL OF THE
CITY ENGINEER OF THE CITY OF WICHITA, KANSAS. NO OBSTRUCTIONS WHICH
IMPEDE THE FLOW OF THIS DRAINAGE SYSTEM SHALL BE ALLOWED.

Baughman Company, P.A.
315 Ellis St., Wichita, KS 67211 | P: 316-263-0149
F: 316-263-0149
www.baughman.com