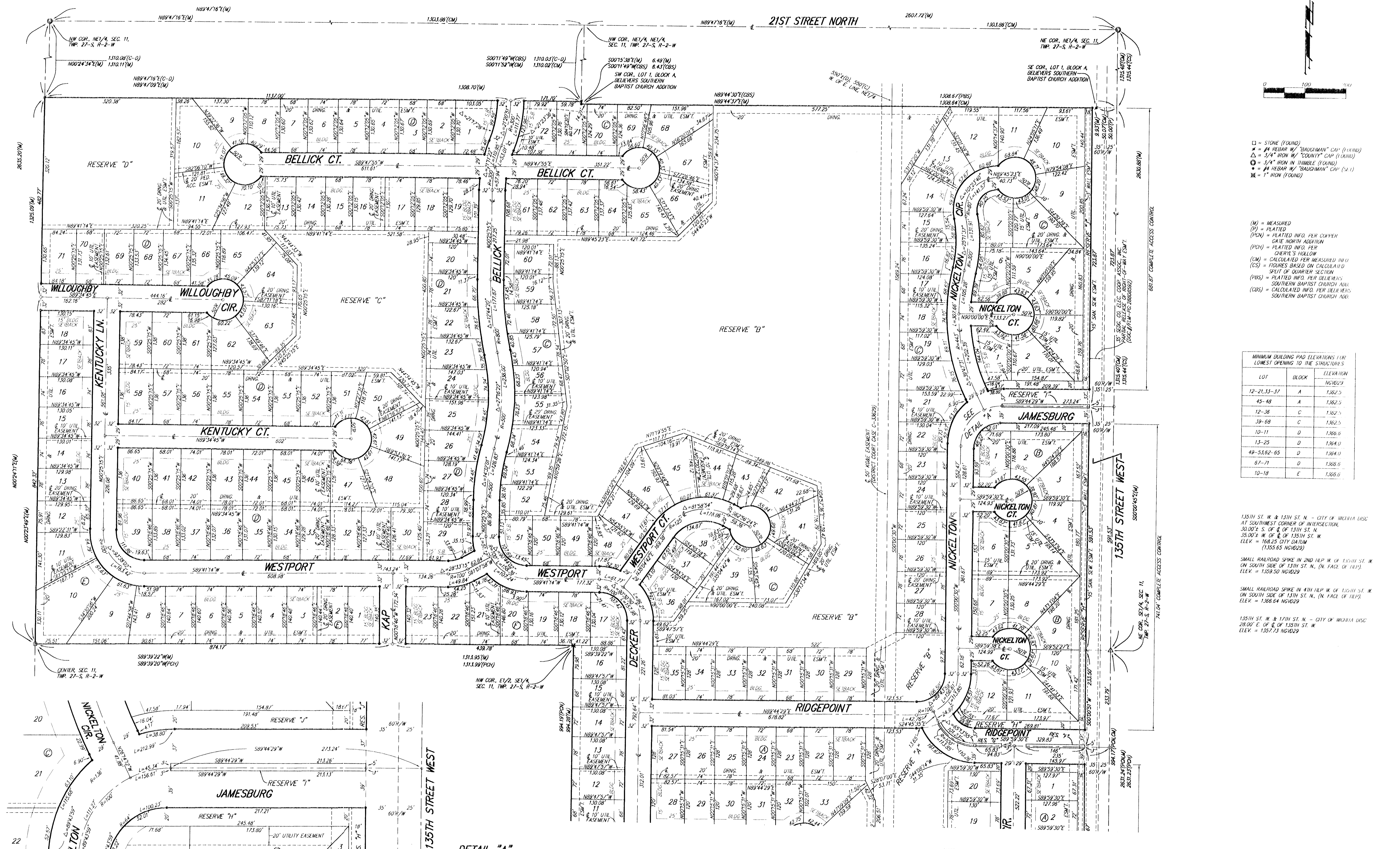


# SILVERTON ADDITION WICHITA, SEDGWICK COUNTY, KANSAS



- = STONE (FOUND)
  - ⊙ = #4 REBAR W/ "BAUGHMAN" CAP (1" IRON)
  - △ = 3/4" IRON W/ "COUNTY" CAP (1" IRON)
  - = 5/8" IRON IN TRIMBLE (FOUND)
  - ⊗ = #4 REBAR W/ "BAUGHMAN" CAP (2" I)
  - ⊗ = 1" IRON (FOUND)
- (M) = MEASURED
  - (P) = PLATTED
  - (PCN) = PLATTED INFO. PER CONVEY GATE NORTH ADDITION
  - (POH) = PLATTED INFO. PER OBER'S HOLLOW
  - (CM) = CALCULATED PER MEASURED INFO
  - (CS) = FIGURES BASED ON CALCULATED SPLIT OF QUARTER SECTION
  - (PS) = PLATTED INFO. PER BELLEVILLE SOUTHERN BAPTIST CHURCH ADD.
  - (CBS) = CALCULATED INFO. PER DEER SOUTHERN BAPTIST CHURCH ADD.

MINIMUM BUILDING PAD ELEVATIONS (10' LOWEST OPENING TO THE STRUCTURE'S)

LOT	BLOCK	ELEVATION
12-21, 33-37	A	1,362.5
45-48	A	1,362.5
12-36	C	1,362.5
39-69	C	1,362.5
10-11	D	1,366.0
13-25	D	1,364.0
49-53, 62-65	D	1,364.0
67-71	D	1,366.0
10-18	E	1,366.0

135TH ST. W. & 13TH ST. N. - CITY OF WICHITA DASC AT SOUTHWEST CORNER OF INTERSECTION, 30.00' E. OF E. OF 13TH ST. N. 35.00' W. OF E. OF 135TH ST. W. ELEV. = 168.25 CITY DATUM (1355.65 NGVD29)

SMALL RAILROAD SPIKE IN 2ND 1/4 W. OF 135TH ST. W. ON SOUTH SIDE OF 13TH ST. N. (N. FACE OF 18' W). ELEV. = 1359.50 NGVD29

SMALL RAILROAD SPIKE IN 4TH 1/4 W. OF 135TH ST. W. ON SOUTH SIDE OF 13TH ST. N. (N. FACE OF 18' W). ELEV. = 1368.64 NGVD29

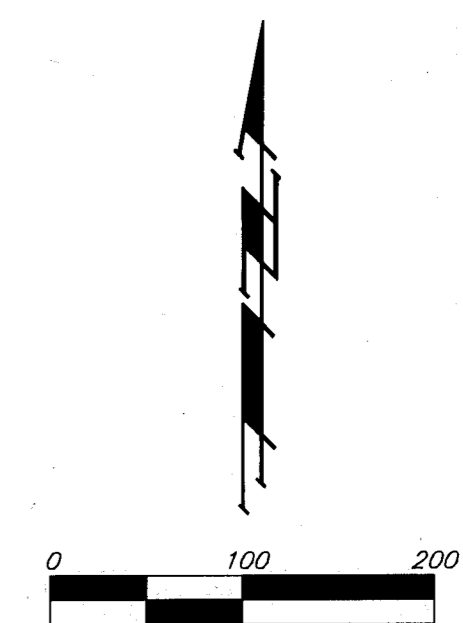
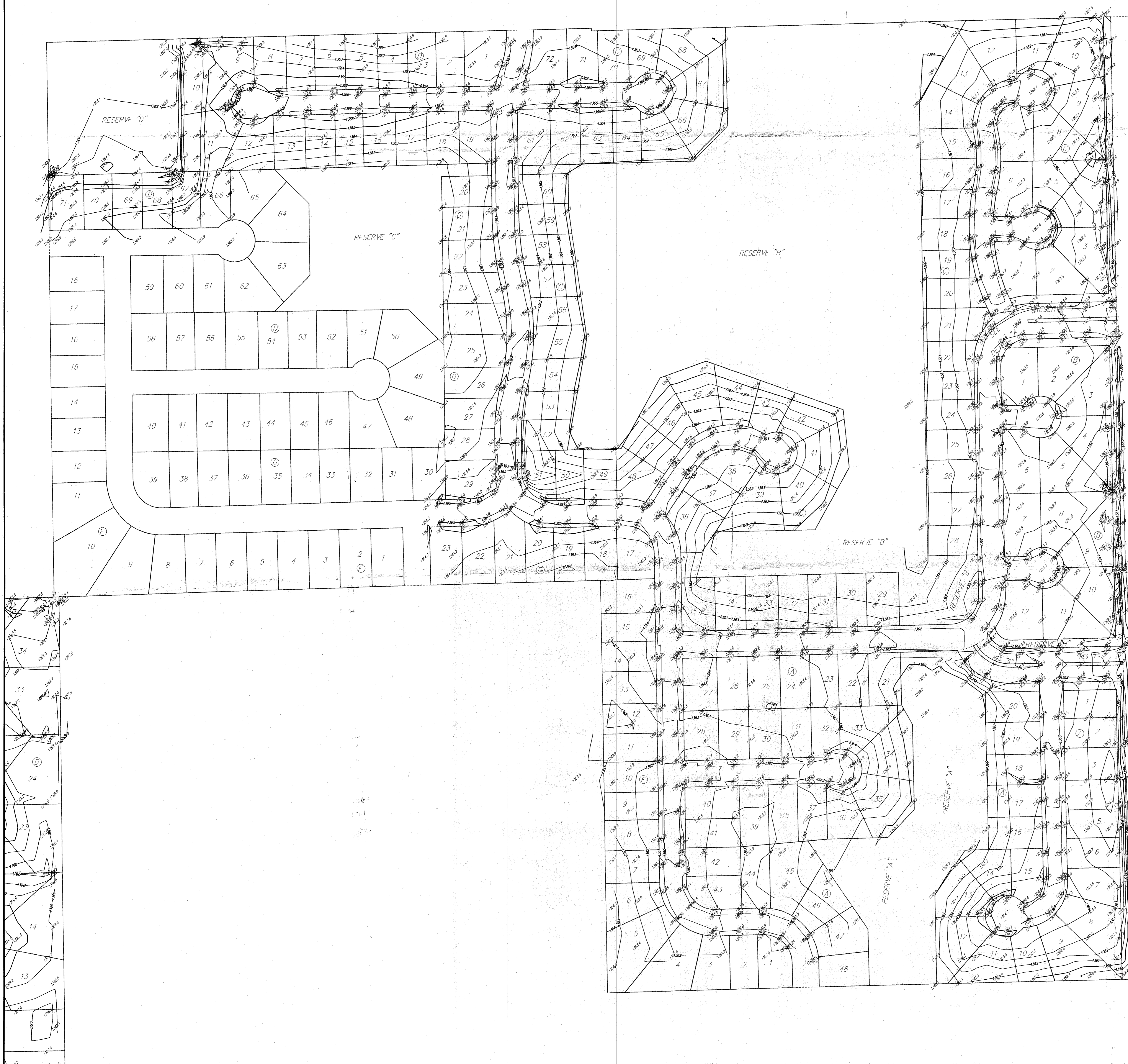
135TH ST. W. & 17TH ST. N. - CITY OF WICHITA DASC 28.00' E. OF E. OF 135TH ST. W. ELEV. = 1357.73 NGVD29

DETAIL "A"  
NO SCALE

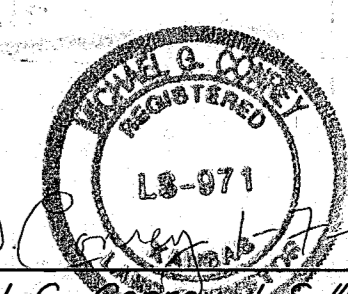
NOTE:  
A master grading plan for drainage has been developed for this subdivision and is on file with the City of Wichita, Kansas. All drainage easements, right-of-ways, or reserves shall remain at established grades or as modified with the approval of the City Engineer of the City of Wichita, Kansas. No obstructions which impede the flow of this drainage system shall be allowed.

# EXHIBIT

## SILVERTON ADDITION WICHITA, SEDGWICK COUNTY, KANSAS



State of Kansas) SS  
 Sedgwick County) SS  
 We, *Baughman Company, P.A.*, Surveyors in aforesaid  
 county and state do hereby certify that the elevations and  
 contours as depicted on the face of this drawing are  
 representing NAVD88 datum.

  
*Michael G. Baughman*  
 Michael G. Baughman, LS #971