

# FINAL TRACING RECORD VALENCIA

## A replat of Northcrest Estates Addition, Wichita, Sedgwick County, Kansas

State of Kansas)  
Sedgwick County) SS

State of Kansas)  
Sedgwick County) SS

We, Ruggles & Bohm, P.A., Land Surveyors in aforesaid county and state, do hereby certify that, under the supervision of the undersigned, we have surveyed and platted "VALENCIA", A replat of Northcrest Estates Addition, Wichita, Sedgwick County, Kansas, and that the accompanying plat is a true and correct exhibit of the property surveyed, described as follows:

The foregoing instrument acknowledged before me this 13<sup>th</sup> day of Feb., 2007, by Brett M. Wegeng, Vice President Commercial Lending of Security Savings Bank, FSB, on behalf of the Bank.

Lots 1, 2, 3, 4, 5, 6, 7, 8, 9, 10, 11, 12, 13, 14, 15, 16, 17, 18, 19, 20, 21, 22, 23, 24, 25, 26, 27, 28, 29, 30, 31, 32, 33, 34, 35, 36, 37, 38, 39, 40, 41, 42, 43, 44, 45, 46, 47, 48, 49 and 50, Block A; Reserves A, B, C, D and E; Athenian Cir., Athenian Ct., Delaware Cir. and Delaware Ct.; All in Northcrest Estates Addition, Wichita, Sedgwick County, Kansas.

My appointment expires 7-31-2010

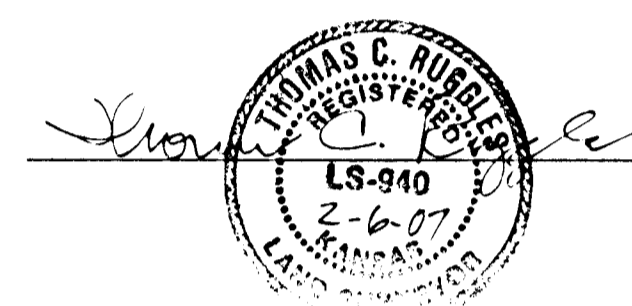
This plat of "VALENCIA", A replat of Northcrest Estates Addition, Wichita, Sedgwick County, Kansas, has been submitted to and approved by the Wichita-Sedgwick County Metropolitan Area Planning Commission, Wichita, Kansas.

Dated this \_\_\_\_\_ day of \_\_\_\_\_, 2007.

Wichita-Sedgwick County Metropolitan Area Planning Commission

All public easements and dedications are hereby vacated by virtue of K.S.A. 12-512(b).

Ruggles & Bohm, P.A.

 Land Surveyor  
Thomas C. Ruggles

Know all men by these presents that we, the undersigned, have caused the land described in the surveyor's certificate to be platted into Lots, Blocks, Reserves and Streets, to be known as "VALENCIA", A replat of Northcrest Estates Addition, Wichita, Sedgwick County, Kansas. Access Controls as indicated are hereby granted to the appropriate governing body. The streets are hereby dedicated to and for the use of the public. Utility Easements are hereby granted for the construction and maintenance of all public utilities. Drainage Easements are hereby granted to the public as indicated for drainage purposes. Reserves "A", "B", "C" and "D" are hereby reserved for walls, entry features and irrigation. Reserve "E" is hereby reserved for walls, walks, lighting, landscaping, berms, and utilities confined to easements. Reserve "F" is hereby reserved for irrigation, walls, signage, gazebos, playground, structures, picnic areas/ tables with canopies, walks, lighting, landscaping, berms, lakes, drainage, drainage structures, and utilities confined to easements. The Reserves are to be owned and maintained by the Home Owners Association for the addition. A drainage plan has been developed for this plat; the property shall remain at established grades, or as modified with the approval of the City Engineer, and unobstructed to allow for the conveyance of storm water.

This plat approved and all dedications shown hereon accepted by the

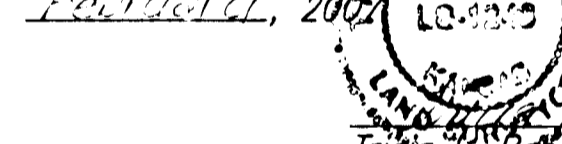
City Council of the City of Wichita, Kansas, this \_\_\_\_\_ day of \_\_\_\_\_, 2007.

At the Direction of the City Council

Mayor

City Clerk

Reviewed in accordance with Kansas Statutes 58-2005 on this 20<sup>th</sup> day of February, 2007.

 Deputy County Surveyor  
Sedgwick County Kansas

Entered on transfer record this \_\_\_\_\_ day of \_\_\_\_\_, 2007.

County Clerk

State of Kansas)  
Sedgwick County) SS

State of Kansas)  
Sedgwick County) SS

This is to certify that this plat has been filed for record in the office of the Register of Deeds, this \_\_\_\_\_ day of \_\_\_\_\_, 2007, at \_\_\_\_\_ o'clock \_\_\_\_\_ M., and is duly recorded.

Register of Deeds


Deputy

The foregoing instrument acknowledged before me, this 2<sup>nd</sup> day of February, 2007, by Robert Lobato, Member, on behalf of Chose Development, LLC.

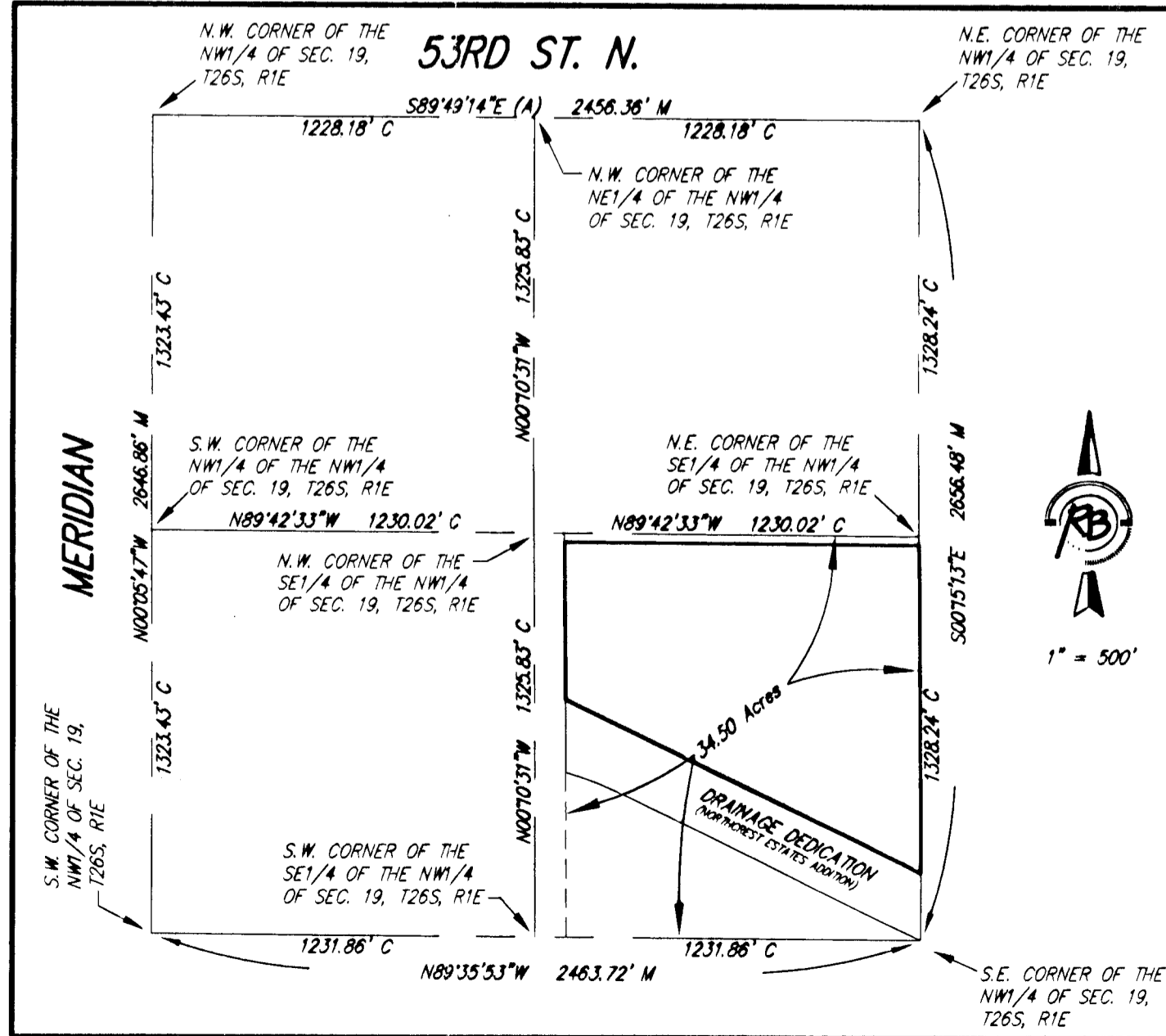
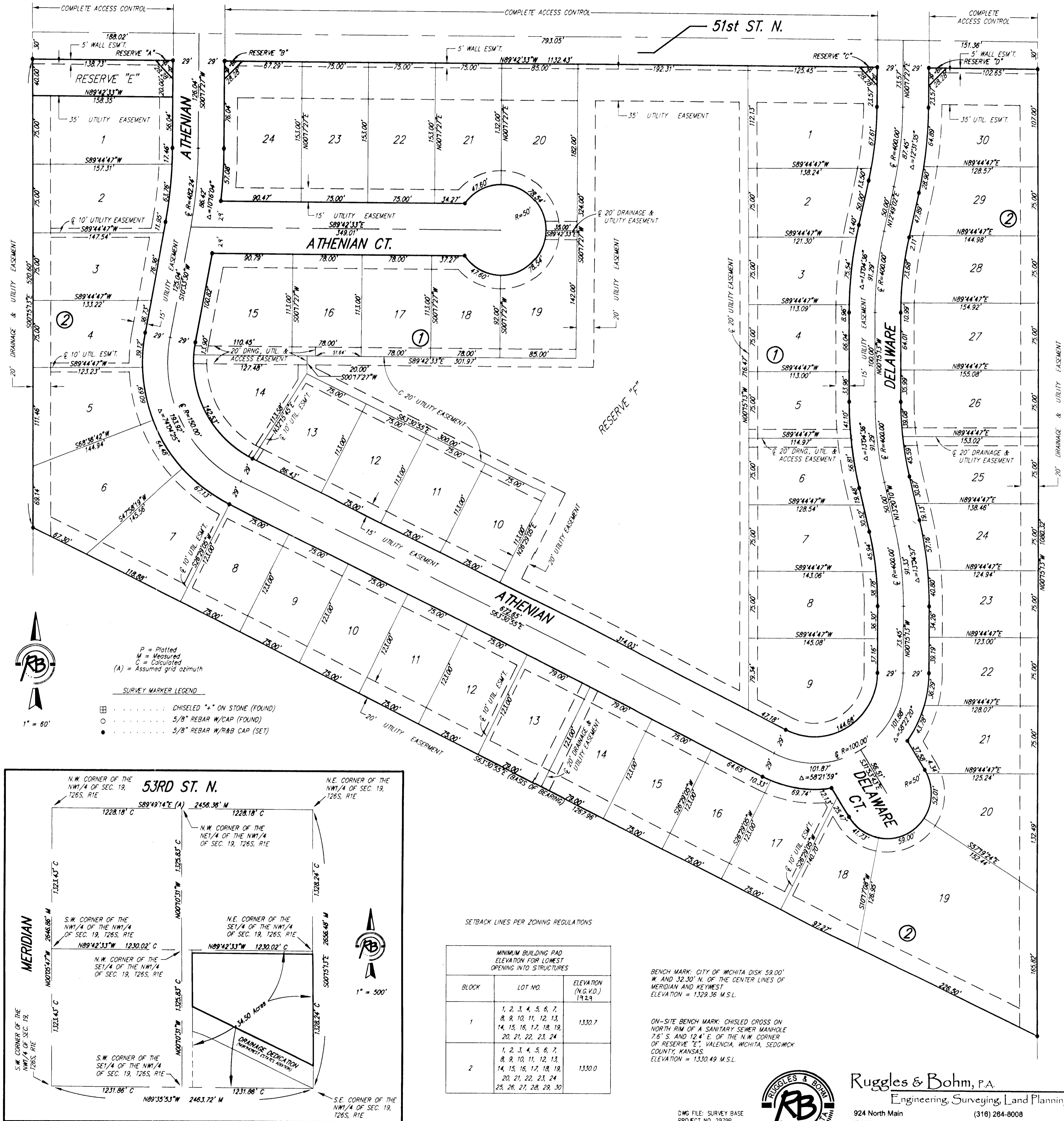
 Notary Public  
Mildred E. Franz

My appointment expires 02-13-2007

We the undersigned, holders of a mortgage on a portion of the above described property, do hereby consent to this plat of "VALENCIA", A replat of Northcrest Estates Addition, Wichita, Sedgwick County, Kansas.

 Vice President Commercial Lending  
Security Savings Bank, FSB

 Deputy



**RUGGLES & BOHM**  
Engineering, Surveying, Land Planning

924 North Main  
Wichita, Kansas 67203  
www.rbkansas.com

(316) 284-8008  
(316) 284-4621 fax  
E-mail: info@rbkansas.com

DWG FILE: SURVEY BASE  
PROJECT NO. 2376P  
FEBRUARY 6, 2007