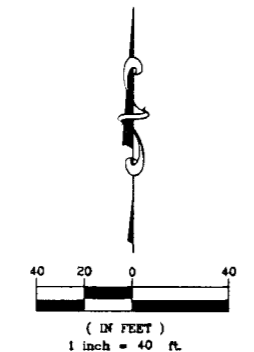
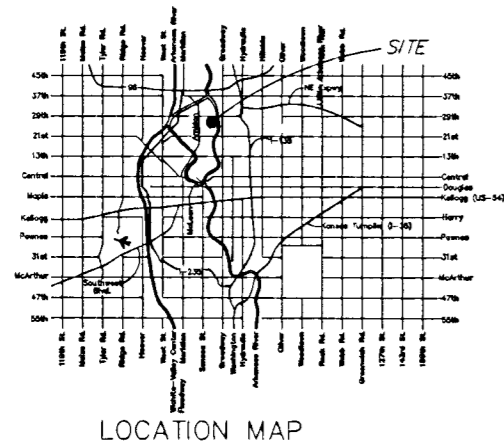
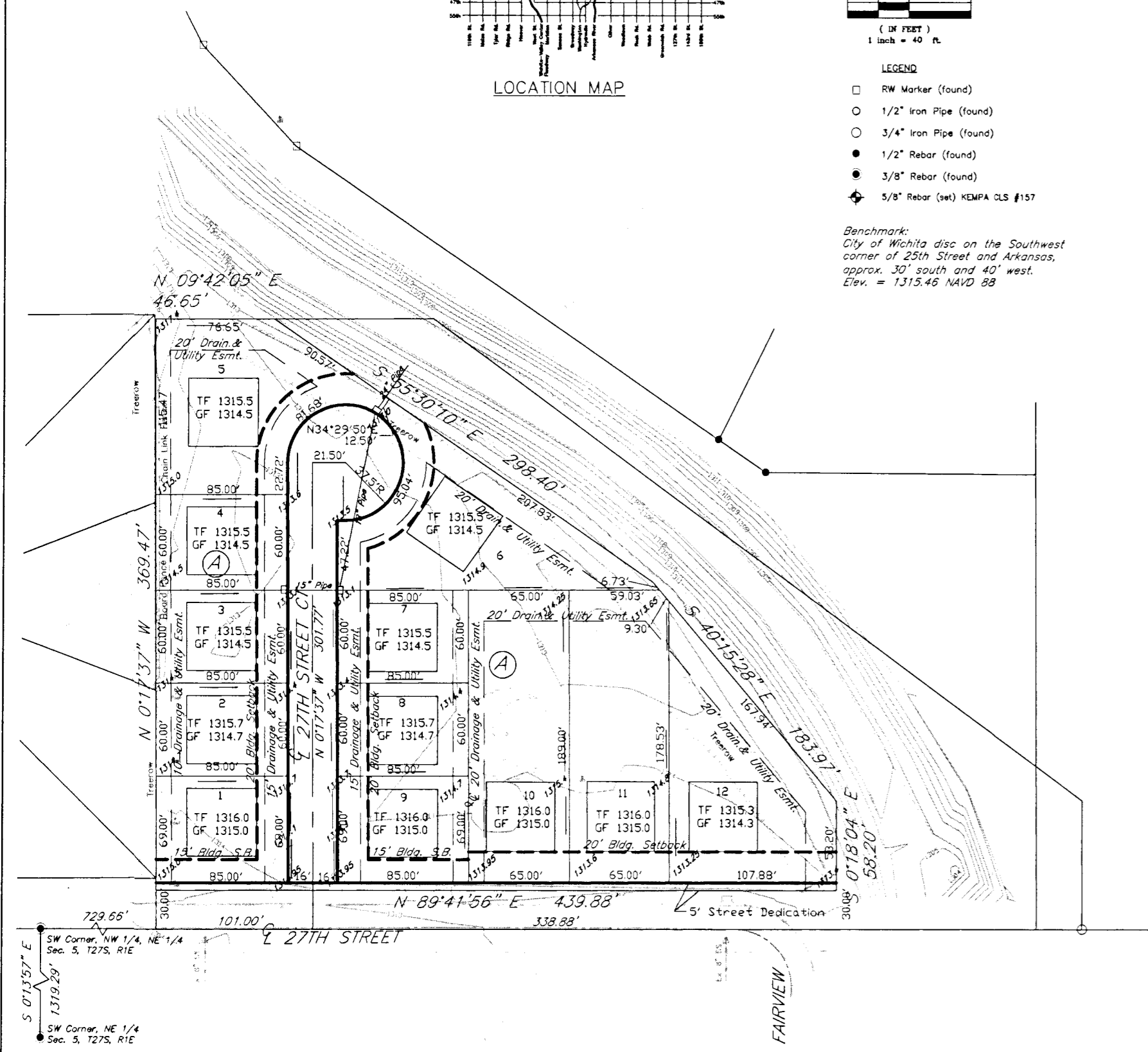


LOT GRADING PLAN
VILLAFLORES
 WICHITA, SEDGWICK COUNTY, KANSAS
 Part of the NE 1/4, Section 5, Township 27 South, Range 1 East of the 6th. P.M.



- LEGEND
- RW Marker (found)
 - 1/2" Iron Pipe (found)
 - 3/4" Iron Pipe (found)
 - 1/2" Rebar (found)
 - 3/8" Rebar (found)
 - ◆ 5/8" Rebar (see) KEMPA OLS #157

Benchmark:
 City of Wichita disc on the Southwest
 corner of 25th Street and Arkansas,
 approx. 30' south and 40' west.
 Elev. = 1315.46 NAVD 88



Existing Site Drainage

Block #	Acres	Tc	C5	15	C100	1100	Q5	Q100
Proposed Plat	2.54	15 min	0.54	4.56	0.68	7.37	6.25cfs	12.73cfs

Proposed Site Drainage

Block #	Acres	Tc	C5	15	C100	1100	Q5	Q100
Proposed Plat	2.54	15 min	0.66	4.56	0.79	7.37	7.64cfs	14.78cfs

Engineer's Note:
 Site drainage calculations developed using the Rational Method for
 peak runoff. "C" & "I" values established from the City of Wichita
 Design Criteria and Documentation.

Filename: 07032 Tasset Plat.dwg/Tasset Preliminary Plat.dwg 2-12-08

318 S. Market, Wichita, KS 67202 316/264-0242