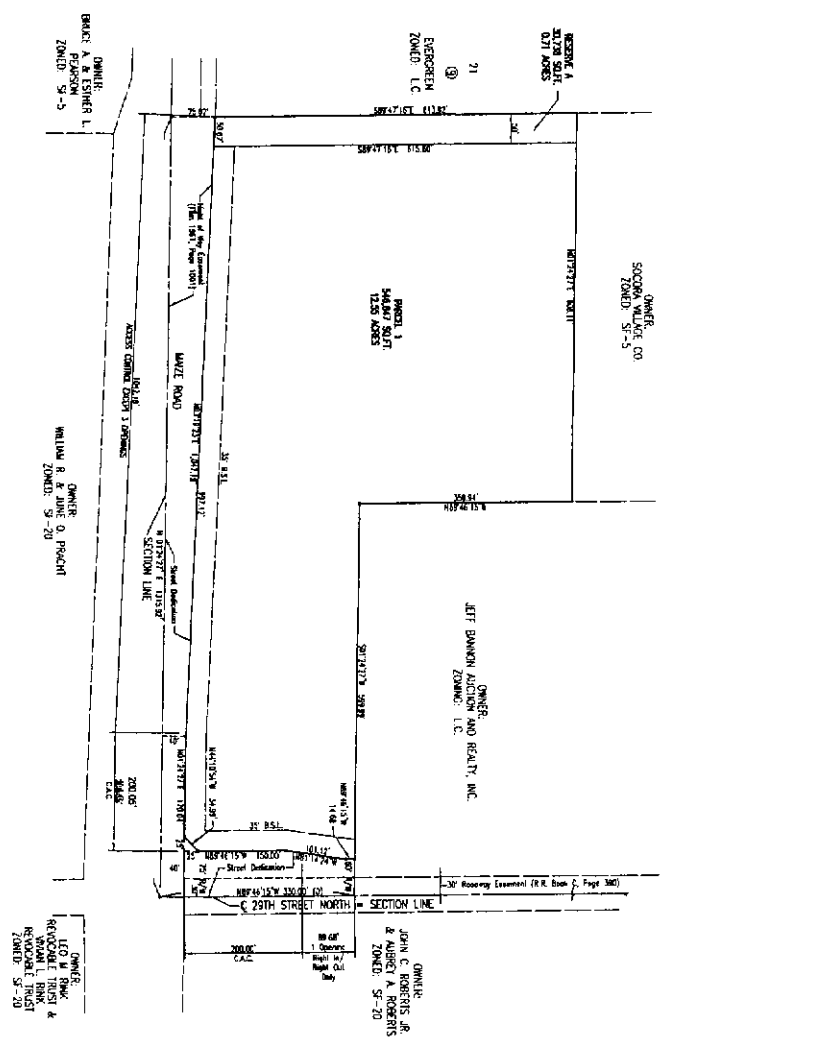
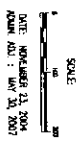


COMMUNITY UNIT PLAN DP-278
NEW MARKET V
 OWNER: STATION COMMERCIAL PROPERTIES, LLC
 272 NORTH MAIN STREET, 409
 MICHIGAN, MASSACHUSETTS 02453



1. THE PROJECT IS PROPOSED TO OCCUPY THE SOUTH SIDE OF THE WEST SIDE OF WINTER STREET BETWEEN WINTER STREET AND WINTER STREET WEST.
2. THE PROJECT IS PROPOSED TO OCCUPY THE SOUTH SIDE OF THE WEST SIDE OF WINTER STREET BETWEEN WINTER STREET AND WINTER STREET WEST.
3. THE PROJECT IS PROPOSED TO OCCUPY THE SOUTH SIDE OF THE WEST SIDE OF WINTER STREET BETWEEN WINTER STREET AND WINTER STREET WEST.
4. THE PROJECT IS PROPOSED TO OCCUPY THE SOUTH SIDE OF THE WEST SIDE OF WINTER STREET BETWEEN WINTER STREET AND WINTER STREET WEST.
5. THE PROJECT IS PROPOSED TO OCCUPY THE SOUTH SIDE OF THE WEST SIDE OF WINTER STREET BETWEEN WINTER STREET AND WINTER STREET WEST.
6. THE PROJECT IS PROPOSED TO OCCUPY THE SOUTH SIDE OF THE WEST SIDE OF WINTER STREET BETWEEN WINTER STREET AND WINTER STREET WEST.
7. THE PROJECT IS PROPOSED TO OCCUPY THE SOUTH SIDE OF THE WEST SIDE OF WINTER STREET BETWEEN WINTER STREET AND WINTER STREET WEST.
8. THE PROJECT IS PROPOSED TO OCCUPY THE SOUTH SIDE OF THE WEST SIDE OF WINTER STREET BETWEEN WINTER STREET AND WINTER STREET WEST.
9. THE PROJECT IS PROPOSED TO OCCUPY THE SOUTH SIDE OF THE WEST SIDE OF WINTER STREET BETWEEN WINTER STREET AND WINTER STREET WEST.
10. THE PROJECT IS PROPOSED TO OCCUPY THE SOUTH SIDE OF THE WEST SIDE OF WINTER STREET BETWEEN WINTER STREET AND WINTER STREET WEST.
11. THE PROJECT IS PROPOSED TO OCCUPY THE SOUTH SIDE OF THE WEST SIDE OF WINTER STREET BETWEEN WINTER STREET AND WINTER STREET WEST.
12. THE PROJECT IS PROPOSED TO OCCUPY THE SOUTH SIDE OF THE WEST SIDE OF WINTER STREET BETWEEN WINTER STREET AND WINTER STREET WEST.
13. THE PROJECT IS PROPOSED TO OCCUPY THE SOUTH SIDE OF THE WEST SIDE OF WINTER STREET BETWEEN WINTER STREET AND WINTER STREET WEST.
14. THE PROJECT IS PROPOSED TO OCCUPY THE SOUTH SIDE OF THE WEST SIDE OF WINTER STREET BETWEEN WINTER STREET AND WINTER STREET WEST.
15. THE PROJECT IS PROPOSED TO OCCUPY THE SOUTH SIDE OF THE WEST SIDE OF WINTER STREET BETWEEN WINTER STREET AND WINTER STREET WEST.
16. THE PROJECT IS PROPOSED TO OCCUPY THE SOUTH SIDE OF THE WEST SIDE OF WINTER STREET BETWEEN WINTER STREET AND WINTER STREET WEST.
17. THE PROJECT IS PROPOSED TO OCCUPY THE SOUTH SIDE OF THE WEST SIDE OF WINTER STREET BETWEEN WINTER STREET AND WINTER STREET WEST.
18. THE PROJECT IS PROPOSED TO OCCUPY THE SOUTH SIDE OF THE WEST SIDE OF WINTER STREET BETWEEN WINTER STREET AND WINTER STREET WEST.
19. THE PROJECT IS PROPOSED TO OCCUPY THE SOUTH SIDE OF THE WEST SIDE OF WINTER STREET BETWEEN WINTER STREET AND WINTER STREET WEST.
20. THE PROJECT IS PROPOSED TO OCCUPY THE SOUTH SIDE OF THE WEST SIDE OF WINTER STREET BETWEEN WINTER STREET AND WINTER STREET WEST.
21. THE PROJECT IS PROPOSED TO OCCUPY THE SOUTH SIDE OF THE WEST SIDE OF WINTER STREET BETWEEN WINTER STREET AND WINTER STREET WEST.
22. THE PROJECT IS PROPOSED TO OCCUPY THE SOUTH SIDE OF THE WEST SIDE OF WINTER STREET BETWEEN WINTER STREET AND WINTER STREET WEST.
23. THE PROJECT IS PROPOSED TO OCCUPY THE SOUTH SIDE OF THE WEST SIDE OF WINTER STREET BETWEEN WINTER STREET AND WINTER STREET WEST.
24. THE PROJECT IS PROPOSED TO OCCUPY THE SOUTH SIDE OF THE WEST SIDE OF WINTER STREET BETWEEN WINTER STREET AND WINTER STREET WEST.
25. THE PROJECT IS PROPOSED TO OCCUPY THE SOUTH SIDE OF THE WEST SIDE OF WINTER STREET BETWEEN WINTER STREET AND WINTER STREET WEST.
26. THE PROJECT IS PROPOSED TO OCCUPY THE SOUTH SIDE OF THE WEST SIDE OF WINTER STREET BETWEEN WINTER STREET AND WINTER STREET WEST.