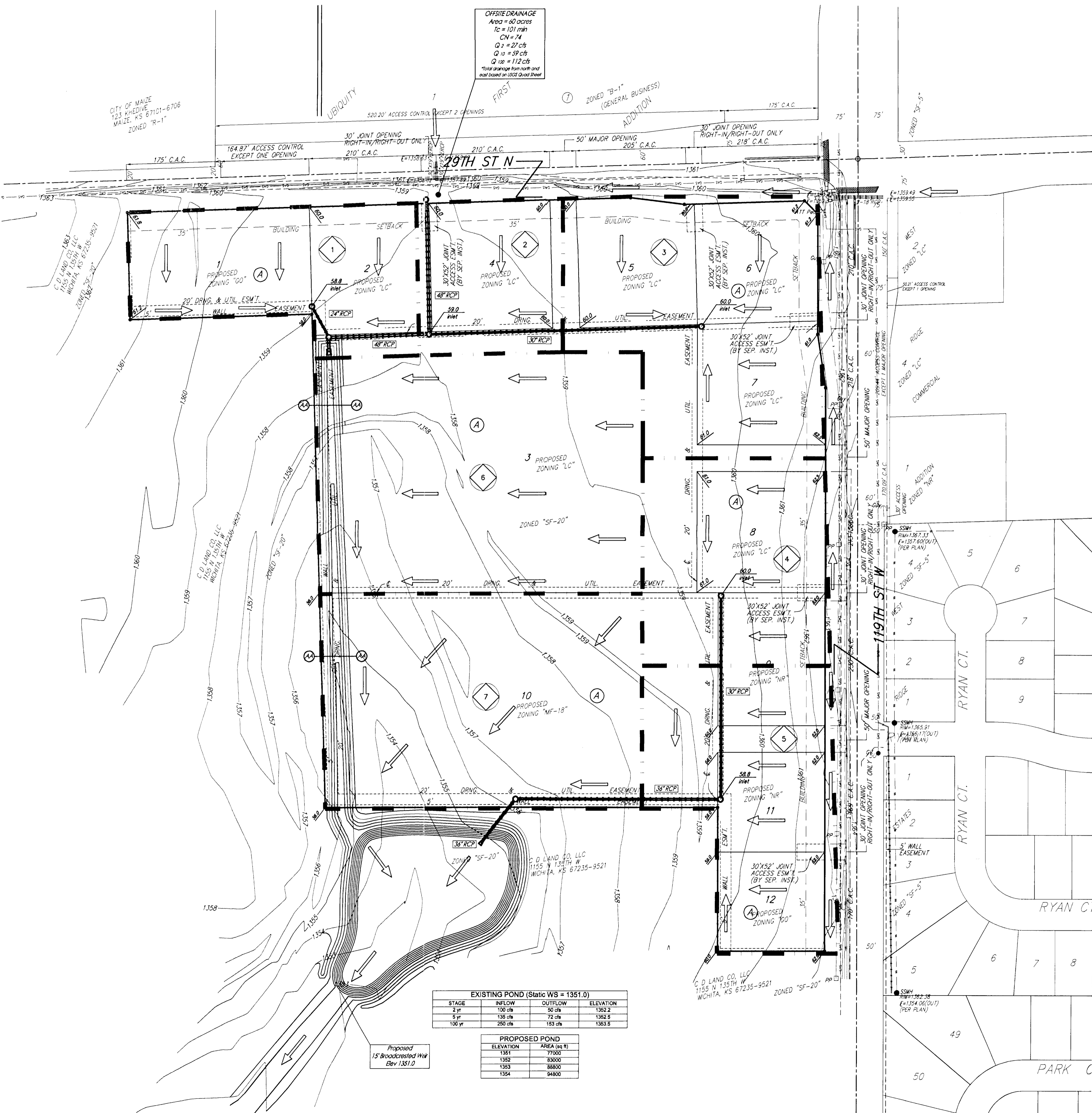


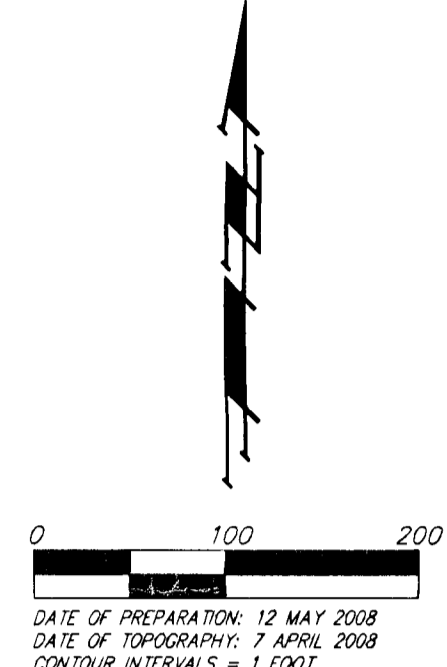
DRAINAGE & GRADING PLAN

ASHTON CREEK COMMERCIAL PARK

WICHITA, SEDGWICK COUNTY, KANSAS



OFFSITE DRAINAGE
 Area = 60 acres
 Tc = 101 min
 CN = 74
 Q₁ = 27 cfs
 Q₁₀ = 59 cfs
 Q₁₀₀ = 112 cfs
 *100 Year drainage from storm and
 not based on local flood event



DATE OF PREPARATION: 12 MAY 2008
 DATE OF TYPING: 17 APRIL 2008
 CONTOUR INTERVALS = 1 FOOT

- #4 REBAR W/ "BAUGHMAN" CAP (SET)
- #4 REBAR W/ "TILTS" CAP (FOUND)
- 1" IRON (FOUND)
- 1/2" IRON (FOUND)
- 1/2" IRON (FOUND)
- (M) = MEASURED
- (D) = DESIGN
- (P) = PLATTED
- (C) = CALCULATED

OWNER:
 C.D. LAND CO. LLC
 ATTN: CHRIS DUGAN
 1155 N 135TH ST W
 WICHITA, KS 67235-9521
 PH: (316) 721-6575

LEGAL DESCRIPTION:
 THAT PART OF GOVERNMENT LOTS 1 AND 2 AND THE
 S 1/2 OF THE NE 1/4 OF SEC. 1, TWP. 21-S, R-2-W OF
 THE 6TH P.M., SEDGWICK COUNTY, KANSAS DESCRIBED
 AS FOLLOWS: BEGINNING AT THE NE CORNER OF SAID
 NE 1/4; THENCE SOUTHERLY ALONG THE EAST LINE OF
 SAID NE 1/4, 1476.80 FEET; THENCE WESTERLY
 PERPENDICULAR TO THE EAST LINE OF SAID NE 1/4,
 260.00 FEET; THENCE NORTHERLY PARALLEL TO THE
 EAST LINE OF SAID NE 1/4, 267.00 FEET; THENCE
 WESTERLY PERPENDICULAR TO THE EAST LINE OF SAID
 NE 1/4, 334.40 FEET; THENCE NORTHERLY
 PERPENDICULAR TO THE NORTH LINE OF SAID NE 1/4,
 920.74 FEET TO A POINT 260.00 FEET NORMALLY
 DISTANT SOUTH OF THE NORTH LINE OF SAID NE 1/4;
 THENCE WESTERLY PARALLEL WITH THE NORTH LINE OF
 SAID NE 1/4, 340.00 FEET; THENCE NORTHERLY
 PERPENDICULAR TO THE NORTH LINE OF SAID NE 1/4,
 260.00 FEET TO A POINT ON THE NORTH LINE OF SAID
 NE 1/4; THENCE EASTERLY ALONG THE NORTH LINE OF
 SAID NE 1/4, 1368.74 FEET TO THE POINT OF
 BEGINNING, ALL BEING SUBJECT TO ROAD
 RIGHTS-OF-WAY OF RECORD.

BENCHMARK:
 119TH ST. W. & 29TH ST. N. - CITY OF WICHITA
 BENCHMARK DISC. AT NW CORNER OF
 INTERSECTION,
 43.60 FEET W. OF SECTION COR. IRON,
 510 FEET WEST OF FACE OF POWER POLE,
 48.70 FEET SOUTH OF STEEL FENCE POST.
 ELEV. = 1360.93 NGVD29

Developed	Intensity	Rational C		
		2yr	25yr	100yr
		3.8	6.08	7.38
		0.68	0.73	0.80

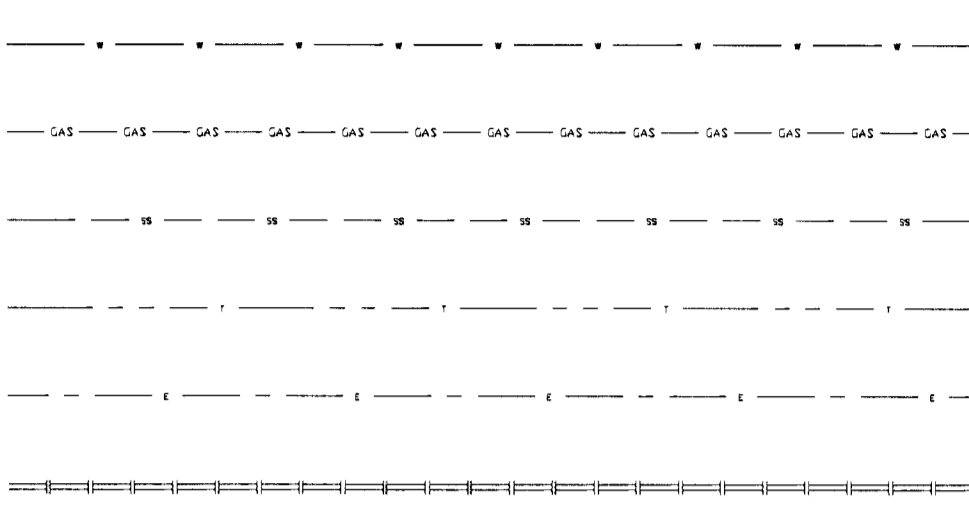
Basin ID	Area	Developed Flowrates		
		2-yr	25-yr	100-yr
	acres	cfs	cfs	cfs
1	3.0	7.8	13	18
2	1.6	4.1	7.1	9.4
3	4.5	12	20	28
4	3.0	7.8	13	18
5	3.5	9.0	15	21
6	6.6	17	29	39
7	5.5	14	24	32
TOTAL	27.7	72	123	163

EXISTING POND (Static WS = 1351.0)

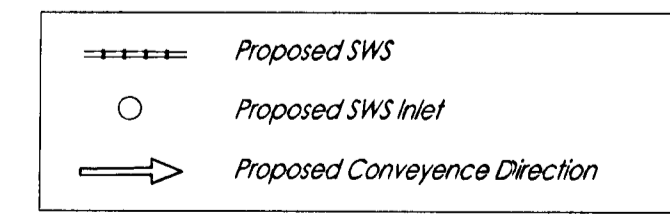
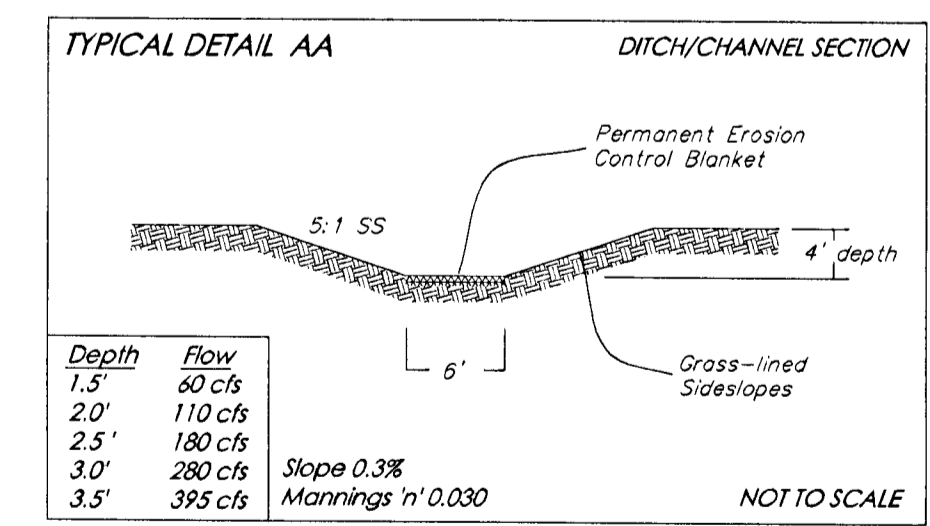
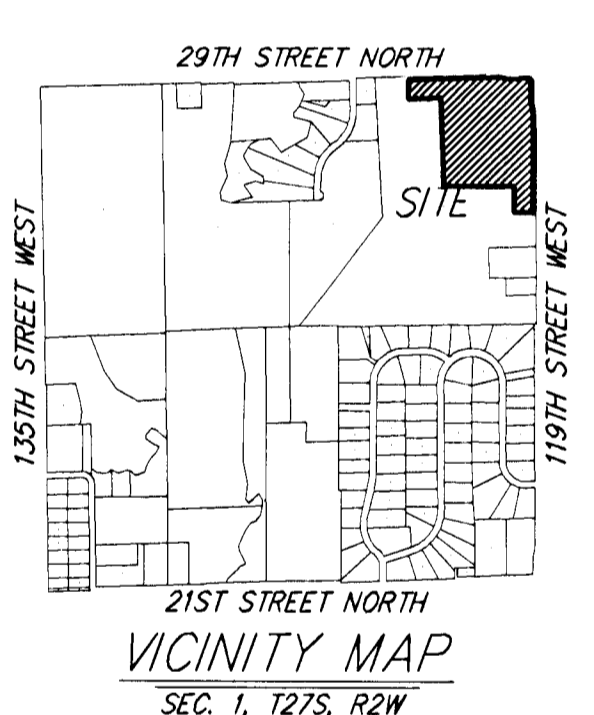
STAGE	INFLOW	OUTFLOW	ELEVATION
2' yr	150 cfs	90 cfs	1352.2
5' yr	138 cfs	72 cfs	1352.8
100 yr	250 cfs	140 cfs	1363.8

PROPOSED POND

ELEVATION	AREA (ACR.)
1351	79000
1352	83000
1353	88000
1354	94800



- CB = Catch Basin
- CO = Cleanout
- CO = Cable TV Pedestal
- DI = Drop Inlet
- DL = Detector Loop
- EB = Electric Box
- FD = Fire Hydrant
- GM = Gas Meter
- GP = Gas Pipe
- GA = Guy Anchor
- GV = Gas Valve
- HPLC = High Line Pole
- ICV = Irrigation Control Valve - Valve Box
- LP = Light Pole
- MB = Mail Box
- MW = Monitoring Well
- P = Pine Tree
- PM = Pipeline Marker
- PP = Power Pole
- RWM = Right-of-Way Marker
- SD = Satellite Dish
- SH = Sprinkler Head
- SP = Signal Pole
- SN = Sign
- SP = Stand Pipe
- SSM = Sanitary Sewer Manhole
- ATM = ATT Manhole
- ATTP = ATT Pedestal
- SWSM = Stormwater Sewer Manhole
- T = Tree
- TB = Traffic Box
- TM = Traffic Manhole
- TP = Telephone Pole
- WH = Water Well
- WM = Water Meter
- WV = Water Valve
- WV = Water Vault
- TR = Transformer
- YH = Yard Hydrant (Spigot)



NOTE: No FEMA SFHA exists on this property as of June 30, 2008 per FEMA FIRM Panel 330 of 700 for Sedgwick County, Kansas, effective February 2, 2007.

DRAINAGE & GRADING PLAN ASHTON CREEK COMMERCIAL PARK

30 JUNE 2008
Baughman Engineering, Surveying & Planning | Landscape Architecture
 315 Ella St. Wichita, KS 67211 P 316.262.7271 F 316.262.0149
 F:\HYDRO\Projects\AshtonCreek\ASHTONCREEKCOMP_drain.dwg